



South Elevation - oblique looking west



North Elevation - Oblique view looking southwest with partial east end elevation

**Hoots Milling Company Roller Mill
1151 Canal Drive, Winston-Salem
Tax Block 1120, Lots 308
PIN #: 6825-88-1927**

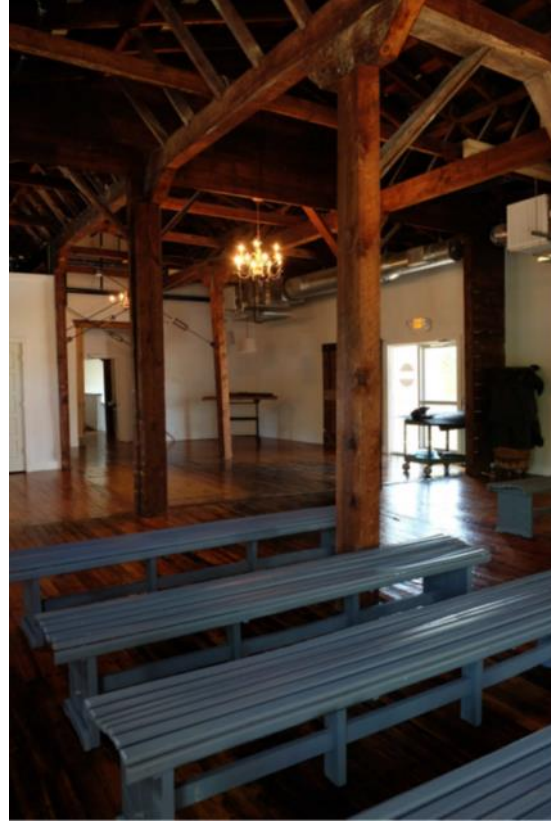


South Elevation - east end toward contributing storage building with connector removed



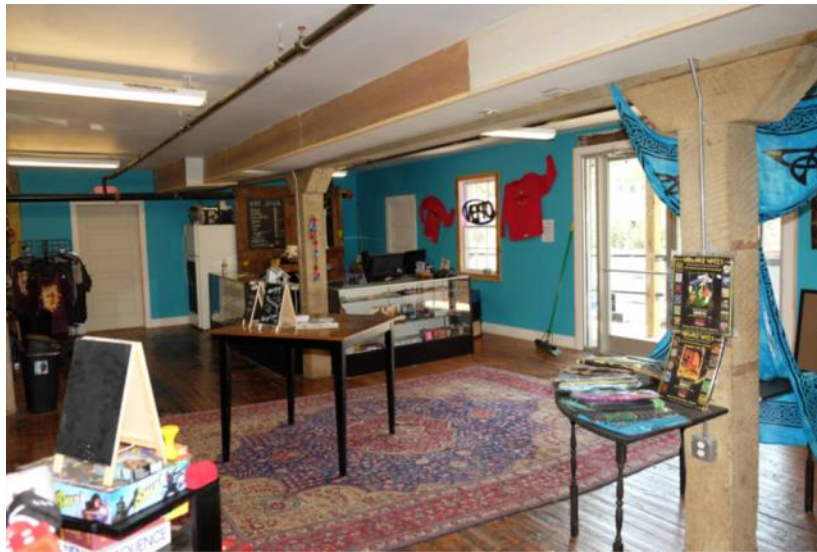
North Elevation – oblique looking west

**Hoots Milling Company Roller Mill
1151 Canal Drive, Winston-Salem
Tax Block 1120, Lots 308
PIN #: 6825-88-1927**



Upper level - looking west into west wing

Upper level - looking east into east wing



Lower level - west wing - oblique view towards northwest corner

Hoots Milling Company Roller Mill
1151 Canal Drive, Winston-Salem
Tax Block 1120, Lots 308
PIN #: 6825-88-1927