

Care of Nash County

821 Word Plaza (Parking Lot)

Rocky Mount, NC 27804

Site is located in a parking lot (as a stop location for a mobile program) of a commercial building that has been repurposed as a church. Surrounding area is large scale commercial.

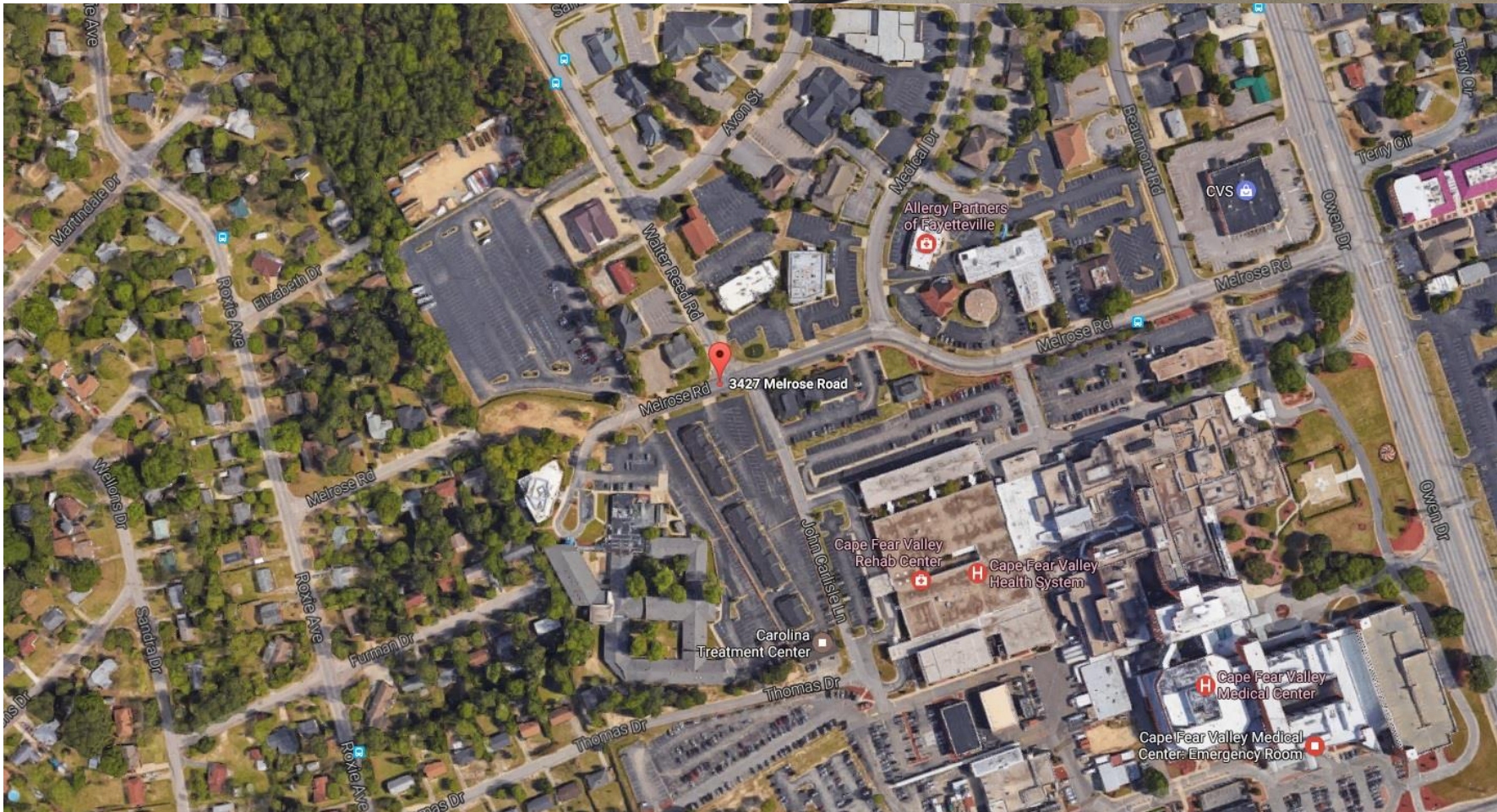


Carolina Treatment Center

3427 Melrose Rd.

Fayetteville, NC 28304

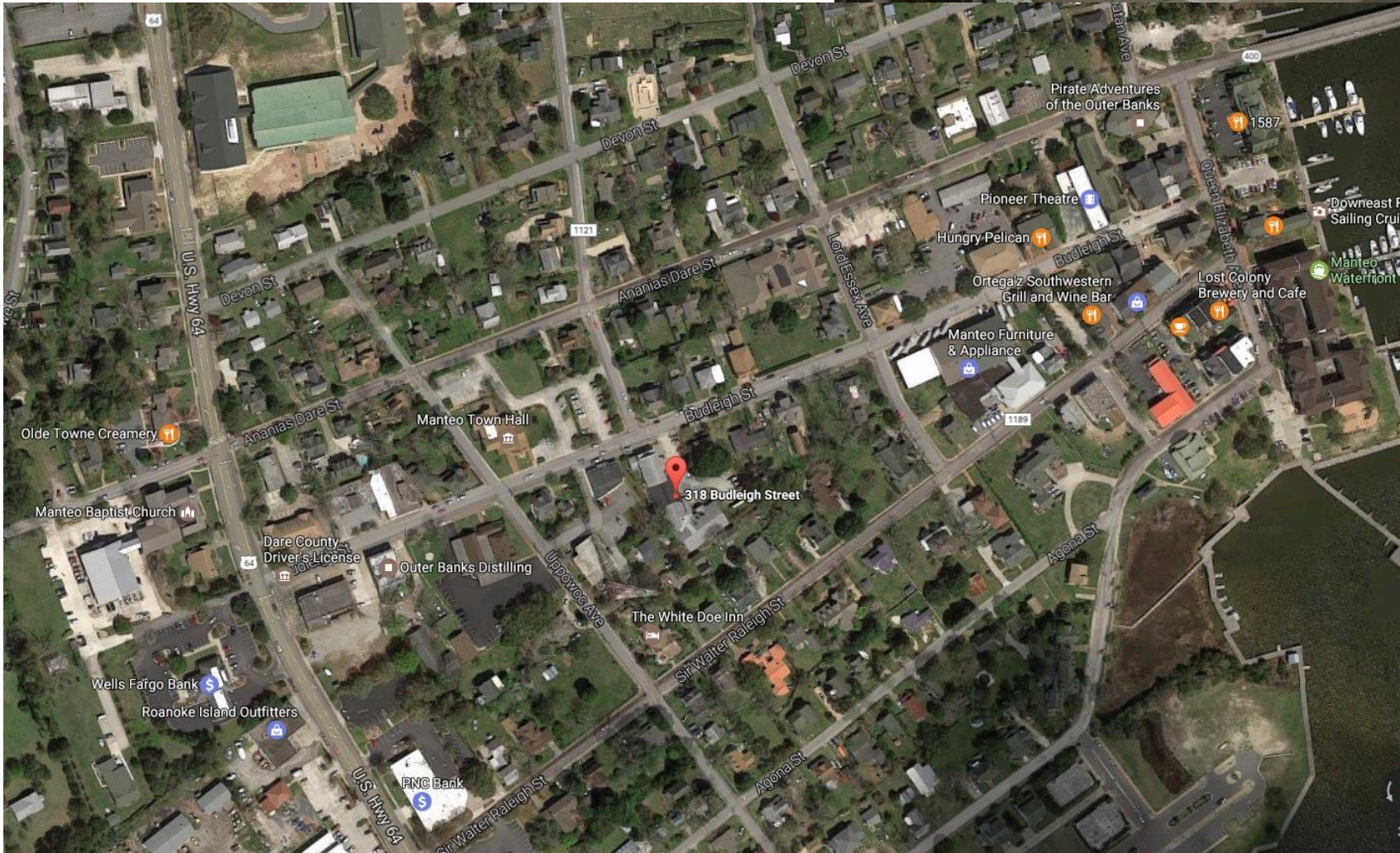
Site is located in a strip office park. Surrounding area includes a hospital, medical offices, and commercial businesses. There is an adjacent residential neighborhood to the west with limited connectivity.



HighLife 252 at Source Church

318 Budleigh St.
Manteo, NC 27954

Site is located in a home converted to commercial/office uses. Surrounding area includes municipal offices, private offices, small scale commercial and some interspersed residential.

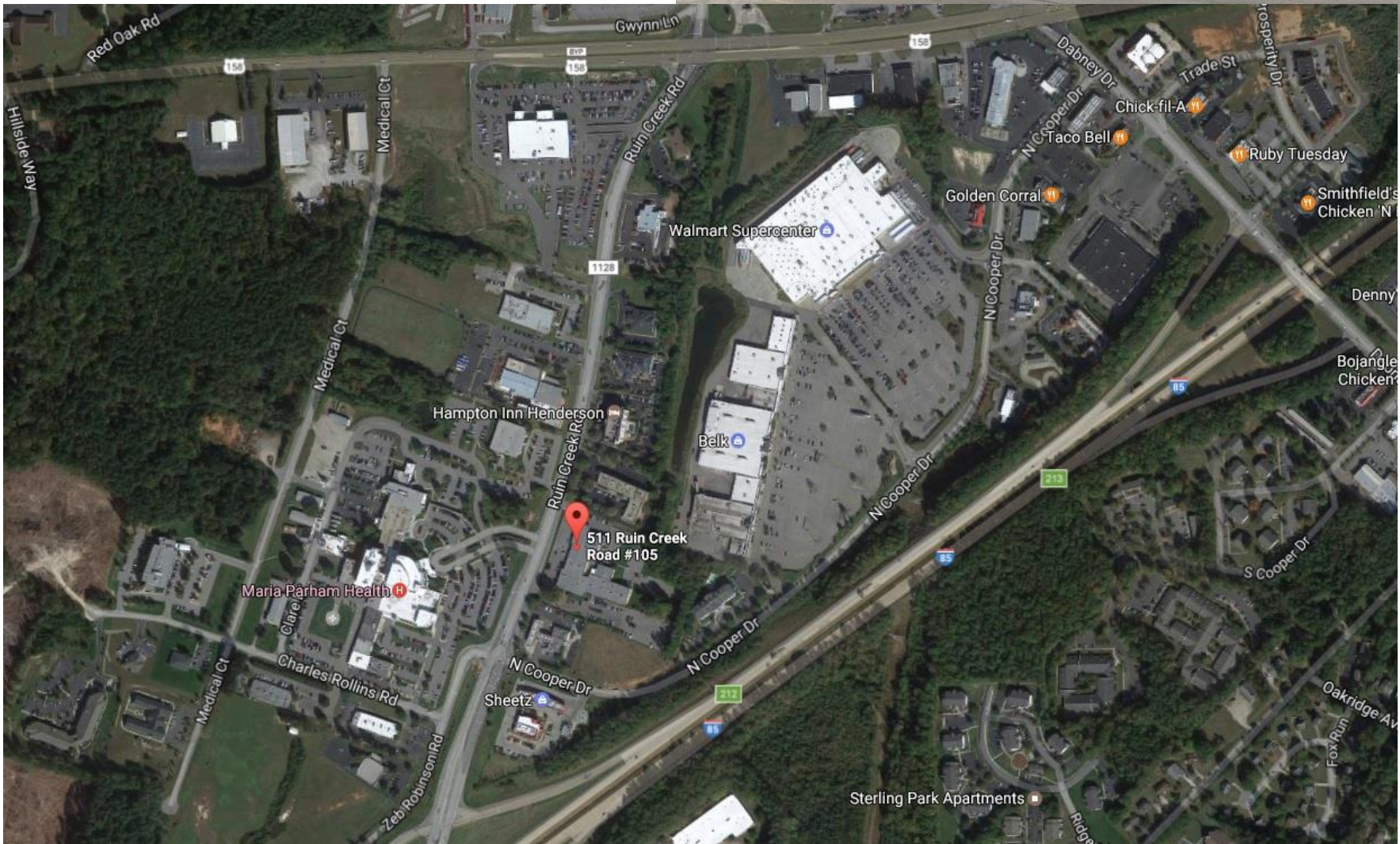


NC Harm Reduction Coalition – Vance

511 Ruin Creek Rd., Suite 105

Henderson, NC 27536

Site is located in a strip office park. Surrounding area includes a hospital, medical offices and a commercial area.

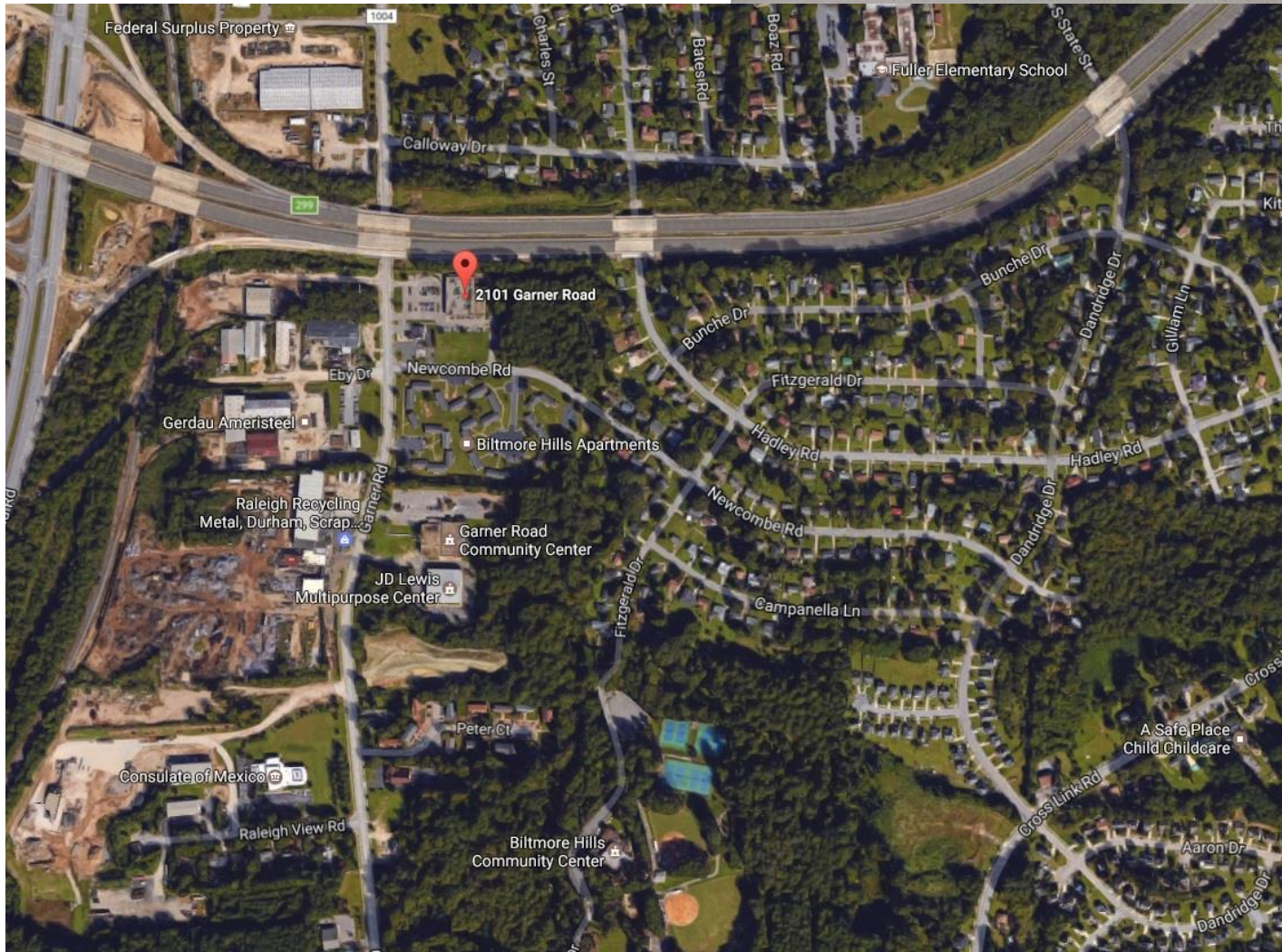


NC Harm Reduction Coalition – Wake

2101 Garner Rd (Parking Lot)

Raleigh, NC 27610

Site is located in a converted commercial building next to I-40. Surrounding area includes small scale industrial and some community services. An apartment complex is located to the south, and a residential neighborhood to the east with limited connectivity.

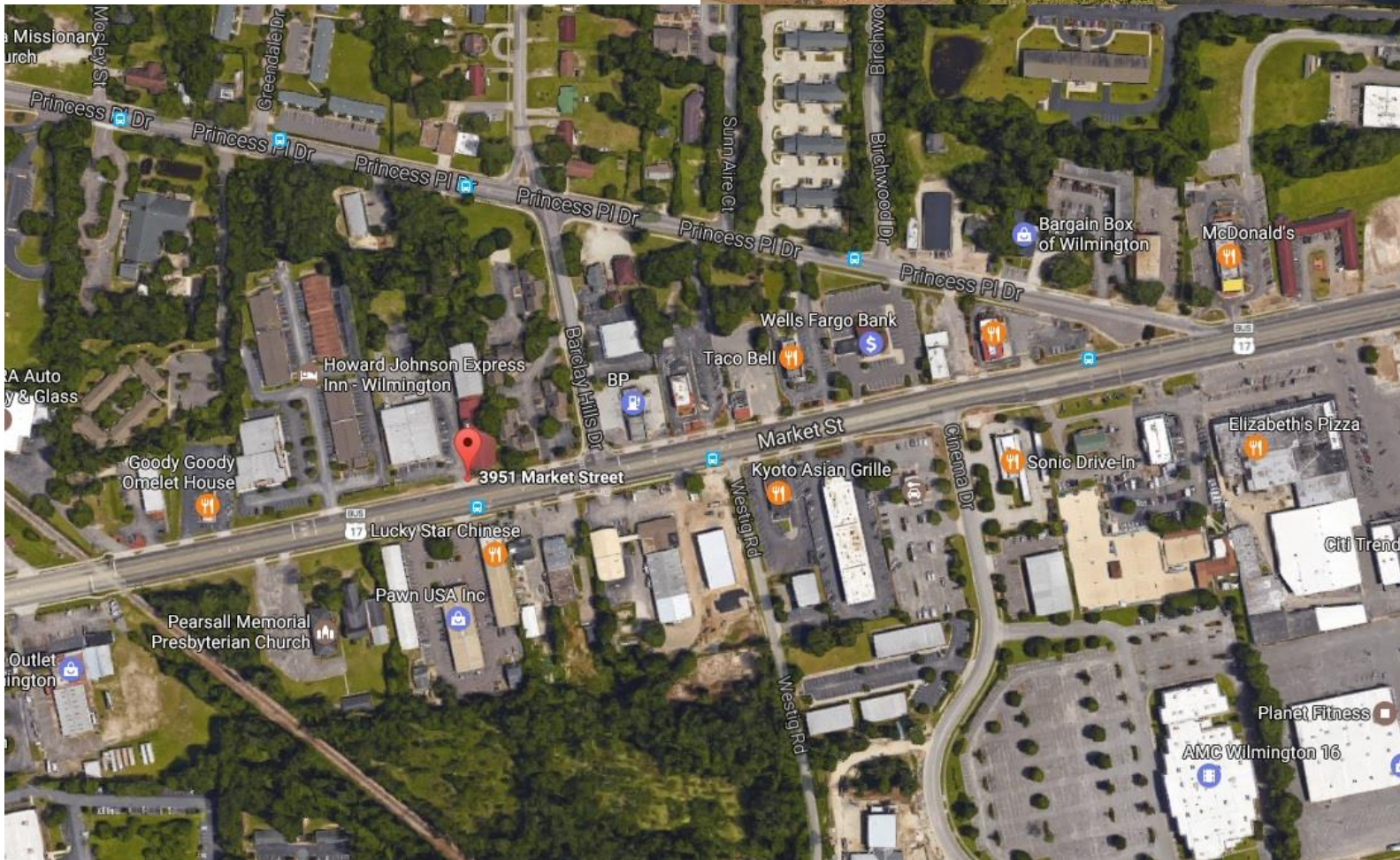


NC Harm Reduction Coalition – Wilmington

3951 Market St., Building B

Wilmington, NC 28403

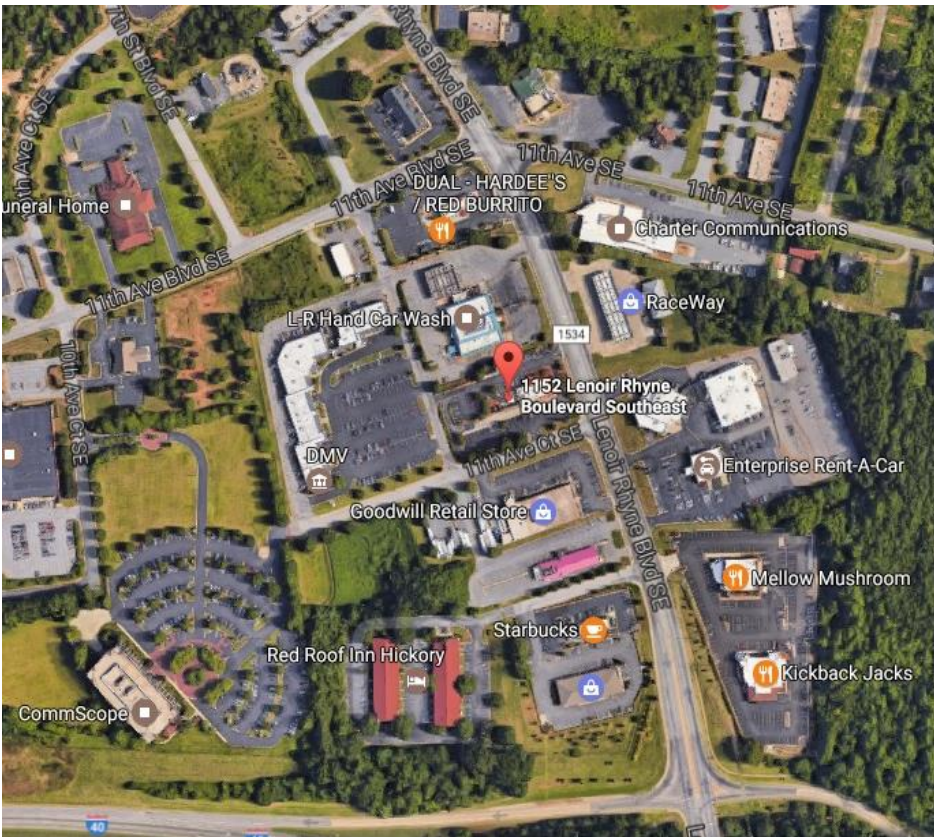
Site is located in a strip office park along a commercial corridor.



Olive Branch Ministry

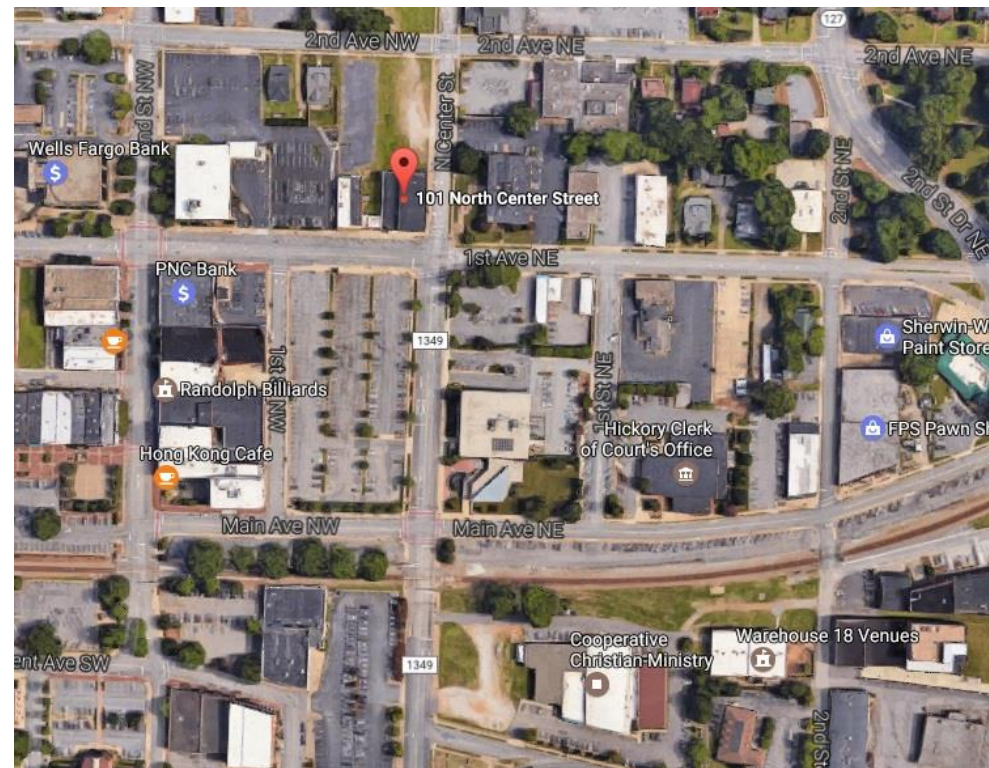
1152 Lenoir Ryne Blvd. SE., Hickory, NC 28602

Site is located in a strip commercial building surrounded by commercial properties.



101 N. Center St., Hickory, NC 28601

Site is located in a downtown building surrounded by municipal offices and businesses.

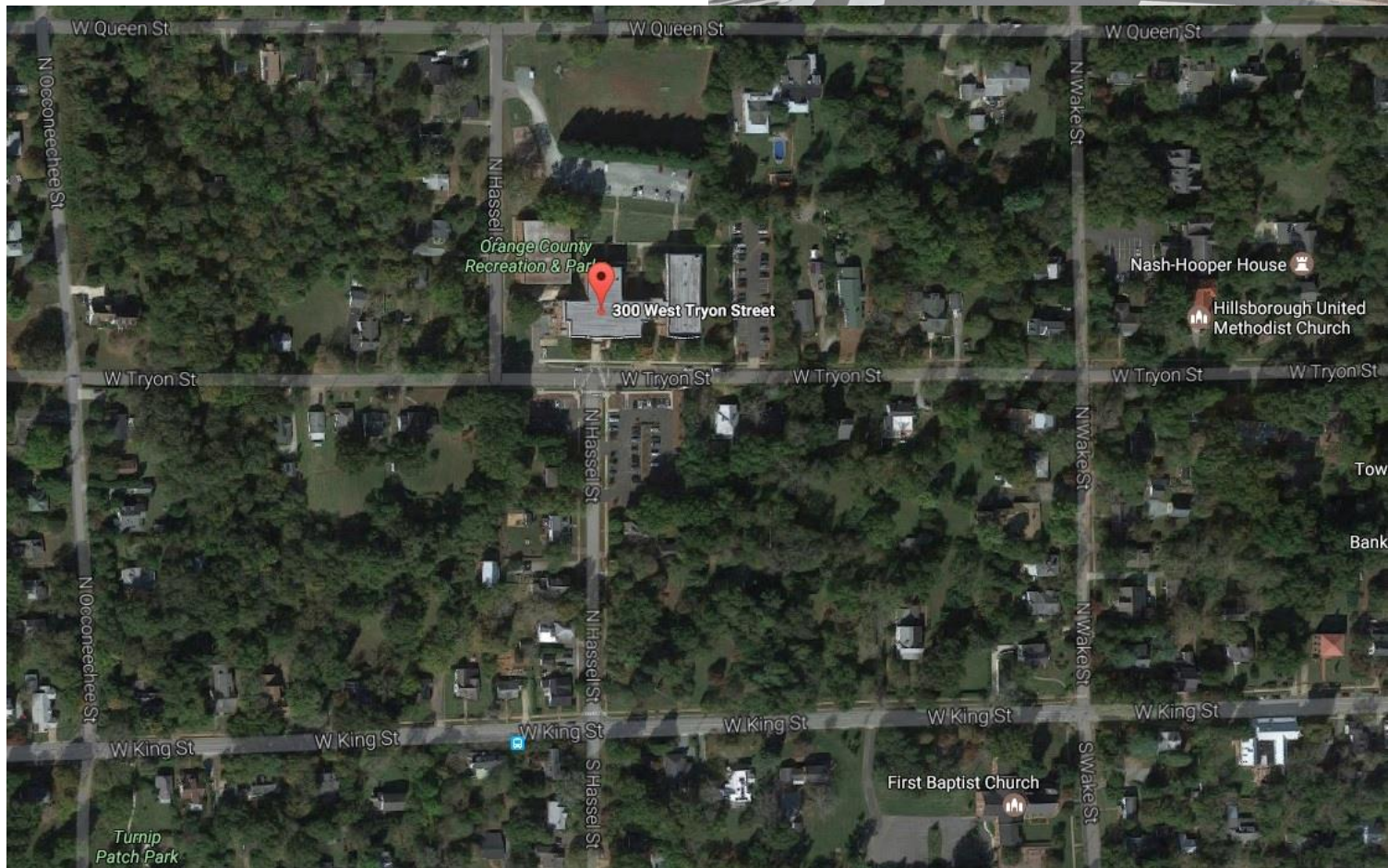


Orange County Health Department

300 W. Tryon St.

Hillsborough, NC 27278

Site is located in a human services/community services building. Surrounding area is residential with some churches nearby.

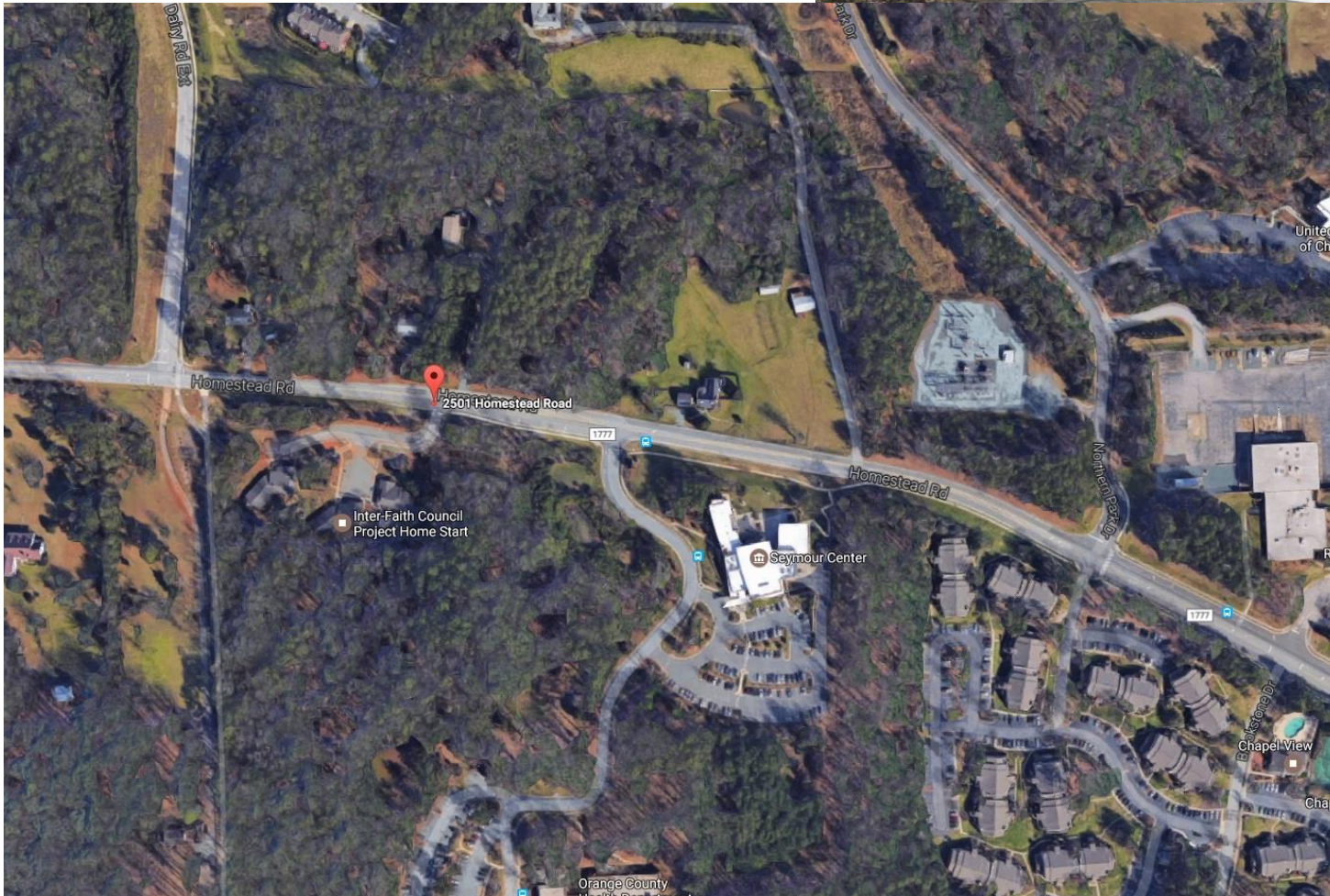


Orange County Health Department

2501 Homestead Rd.

Chapel Hill, NC 27516

Site is located at an interfaith center in a suburban area. Surrounding parcels include vacant land, some widely dispersed single family homes and one apartment complex.

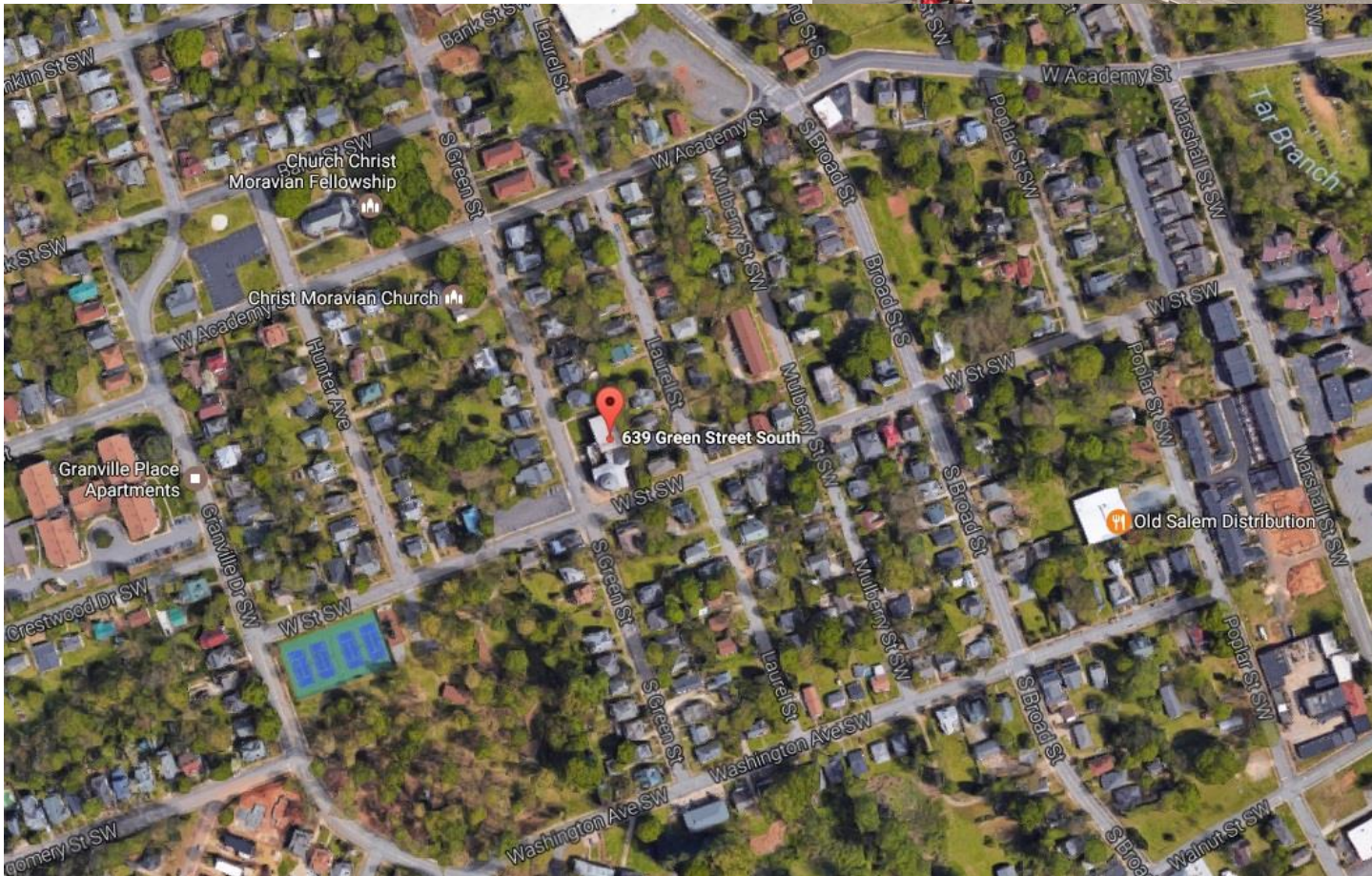


Twin City Harm Reduction Collective

639 S. Green St.

Winston-Salem, NC 27101

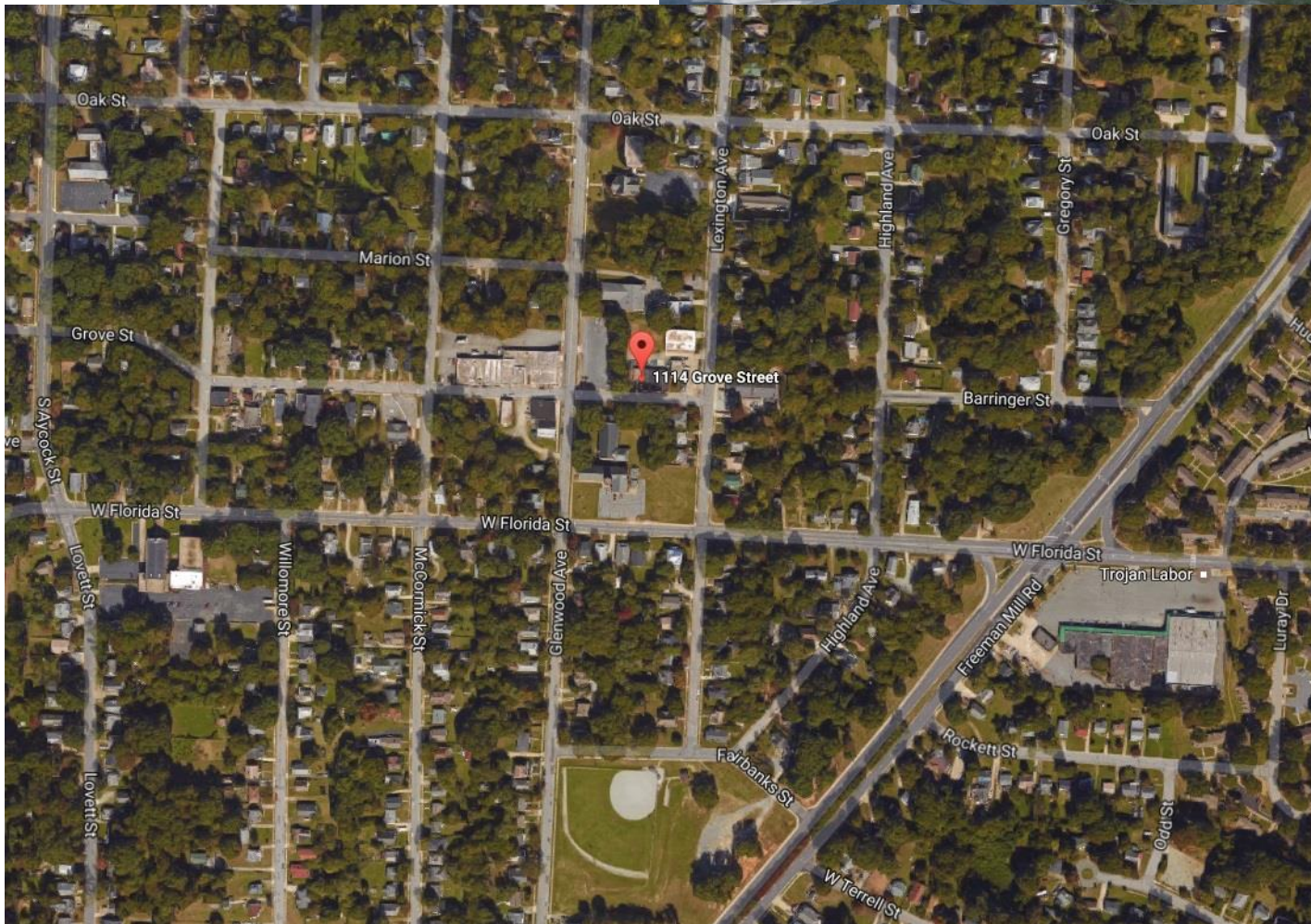
Site is located at a church. Surrounding area is mostly residential, including some multifamily (duplex) units.



Urban Survivors

1114 Grove St.
Greensboro, NC 27403

Site is located in a small neighborhood commercial building. Surrounding area is mostly residential with some additional neighborhood commercial buildings.

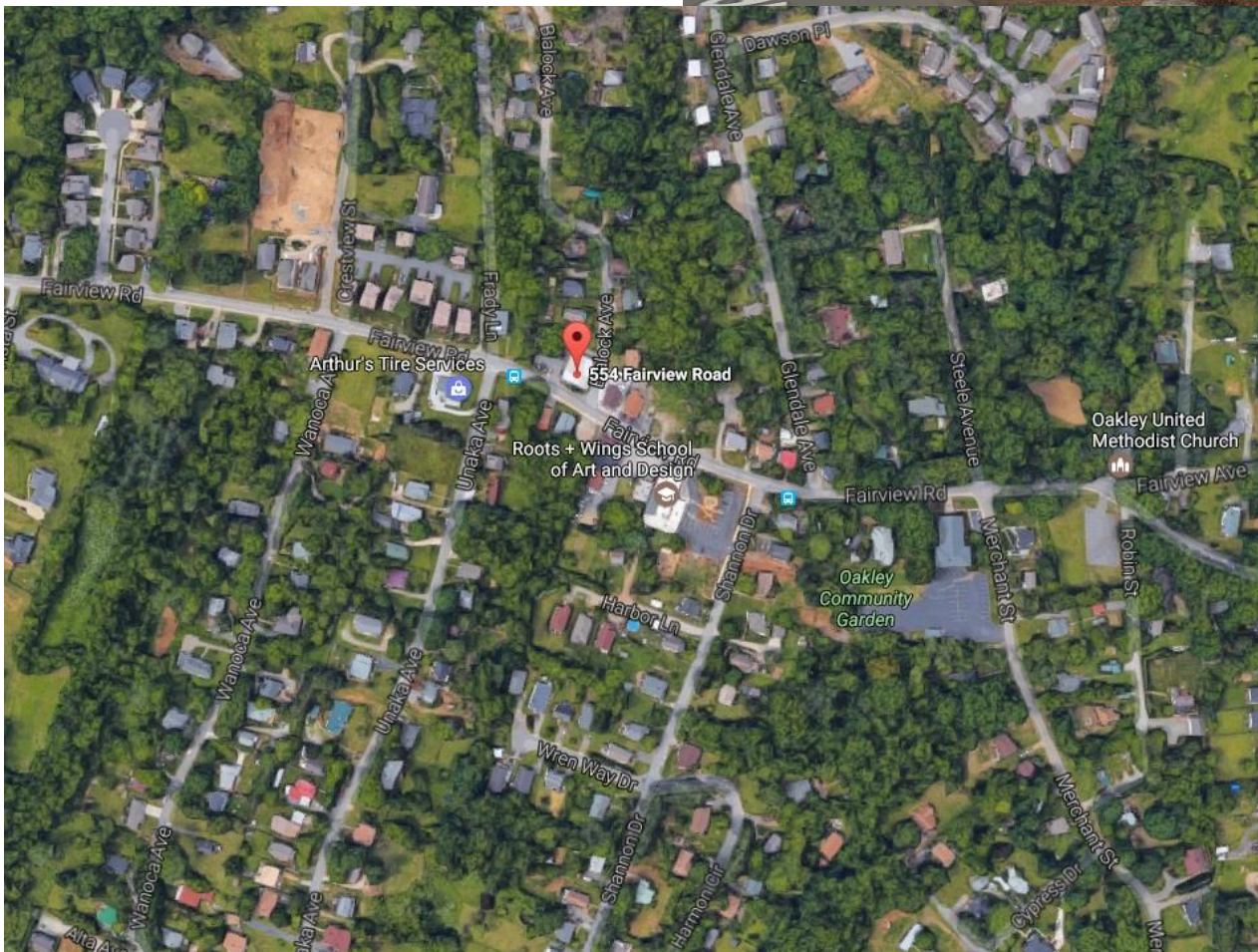


Western NC Aids Project

554 Fairview Rd.

Asheville, NC 28803

Site is located in a small neighborhood commercial building. Surrounding area is mostly residential with some additional neighborhood commercial buildings.



Western NC Aids Project

3261 Georgia Rd.
Franklin, NC 28734

Site is located in a strip commercial building.
Surrounding area is mostly highway commercial.

