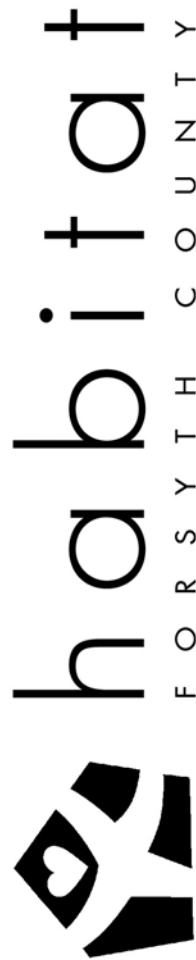




7/15/2023



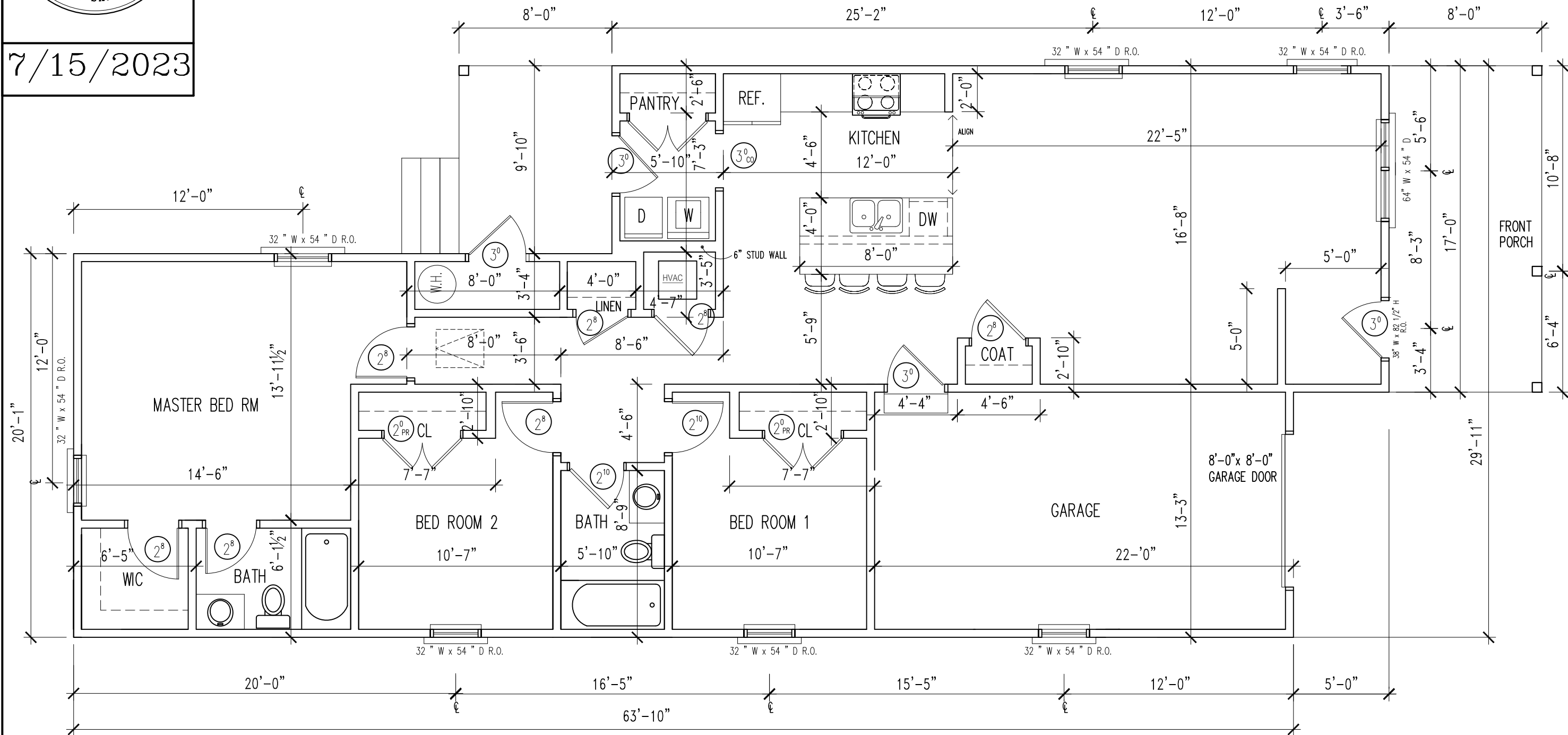
610 SERIES (W/RECESSED GARAGE)



610 SERIES
WITH RECESSED GARAGE



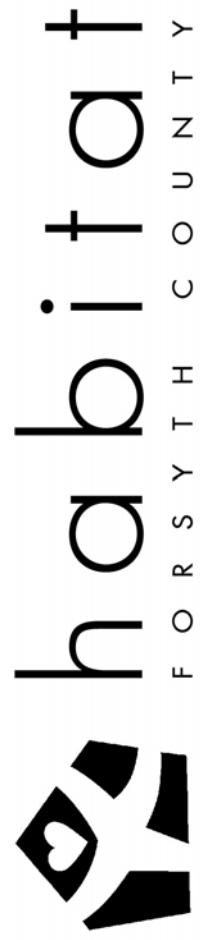
7/15/2023



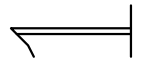
FLOOR PLAN

(1355 H.S.F.)

3/16" = 1'-0"



610 SERIES
WITH RECESSED GARAGE
FLOOR PLAN

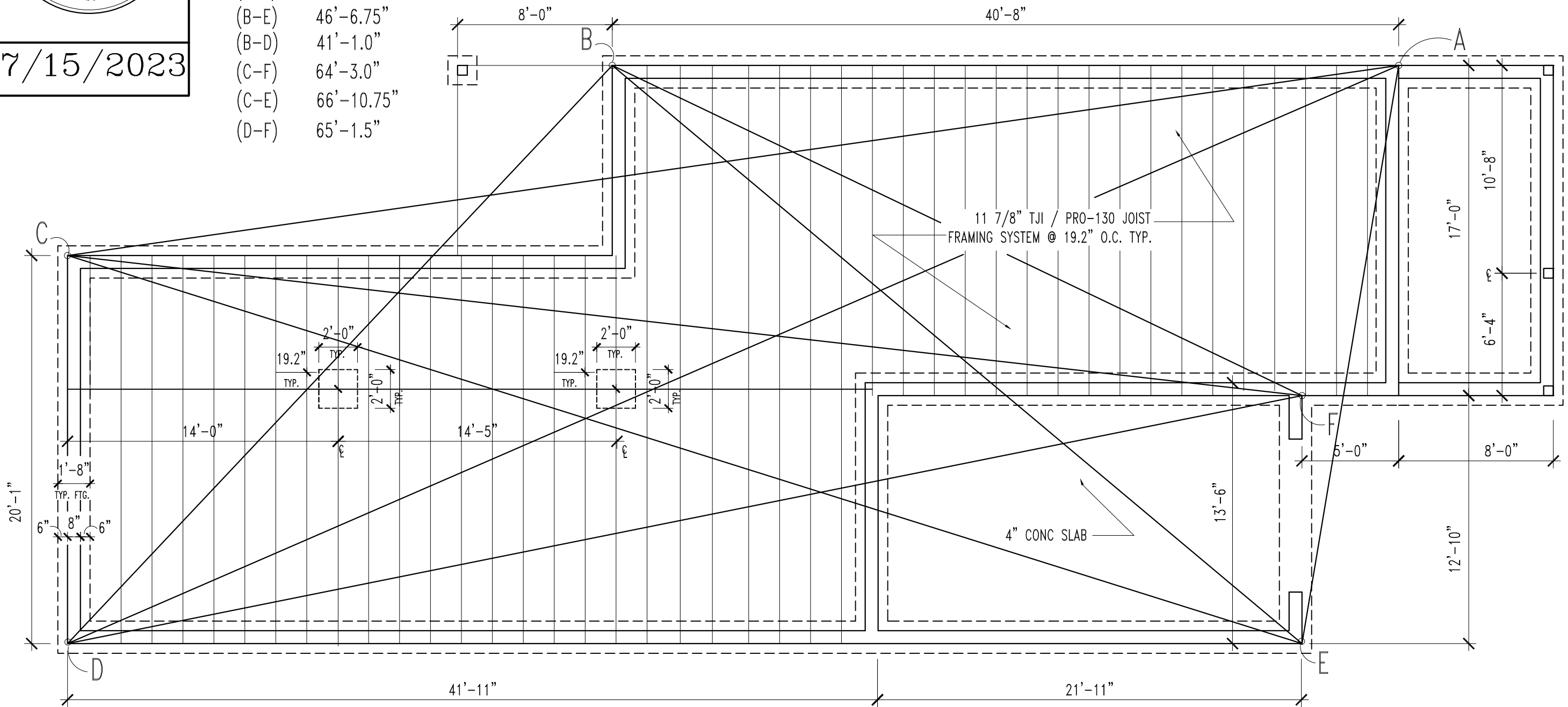




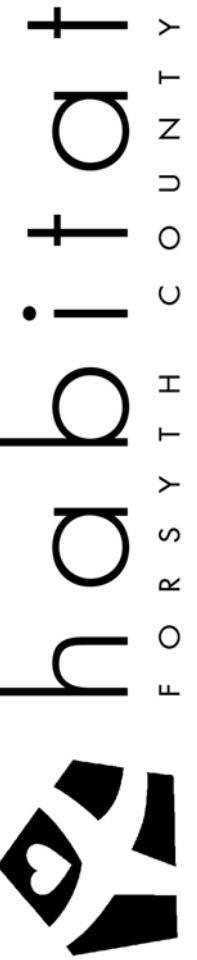
7/15/2023

DIAGONAL DIMENSIONS:

- (A-C) 69'-6.25"
- (A-D) 75'-0.75"
- (A-E) 30'-4.0"
- (B-F) 39'-6.5"
- (B-E) 46'-6.75"
- (B-D) 41'-1.0"
- (C-F) 64'-3.0"
- (C-E) 66'-10.75"
- (D-F) 65'-1.5"



2

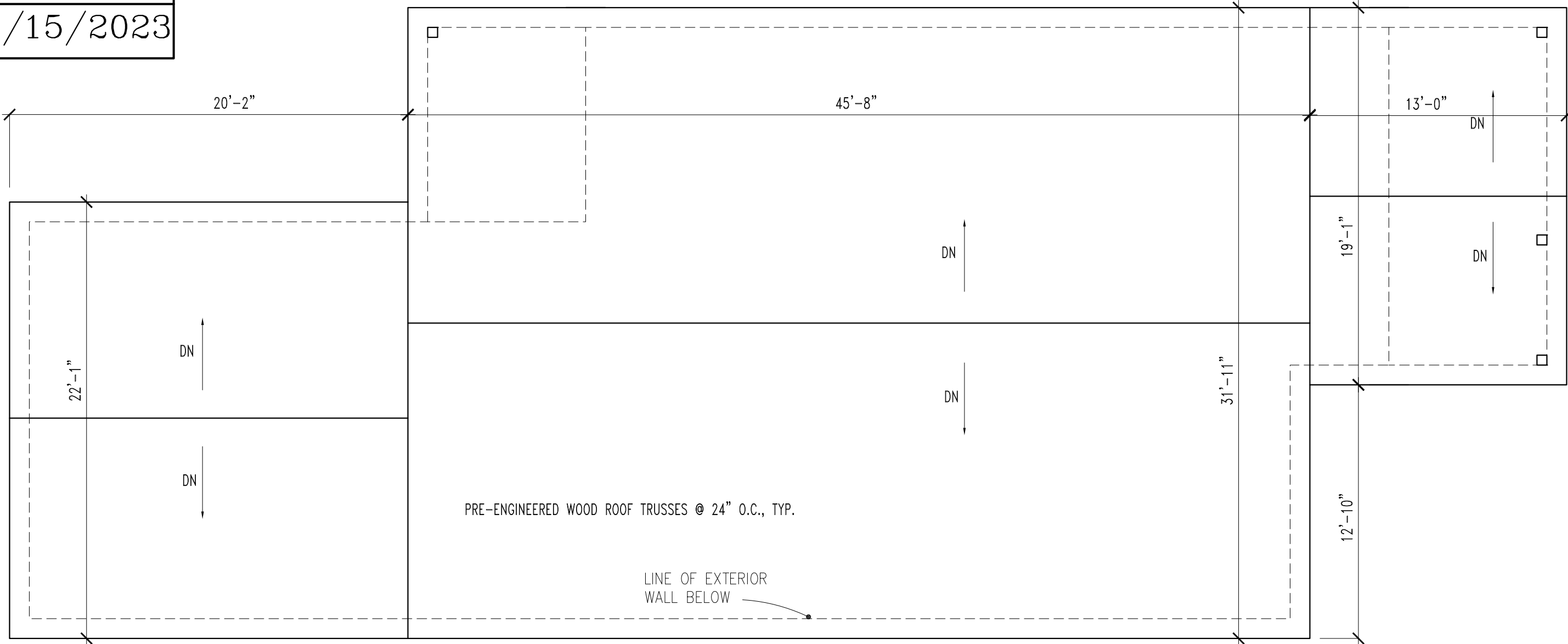


610 SERIES
WITH RECESSED GARAGE
FOUNDATION PLAN



GENERAL NOTES:
ALL SOFFIT OVERHANGS ARE 1'-0"

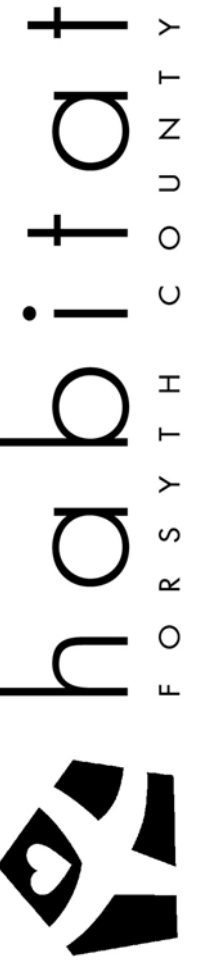
7/15/2023



ROOF PLAN

3/16"=1'-0"

3



610 SERIES
WITH RECESSED GARAGE
ROOF PLAN



FRONT ELEVATION



REAR ELEVATION



7/15/2023

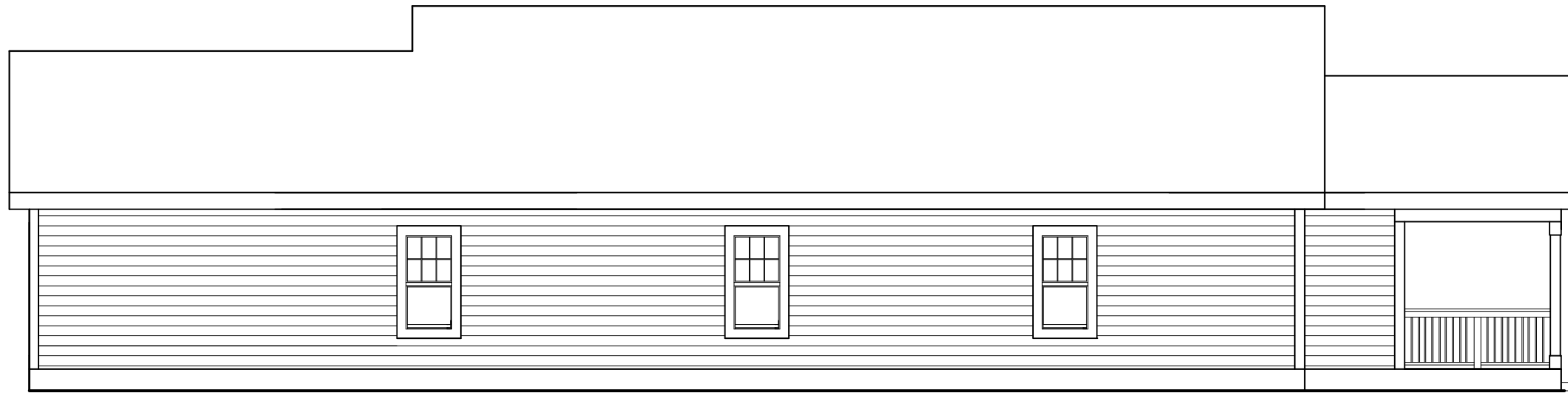
610 SERIES W/ RECESSED GARAGE – ELEVATIONS



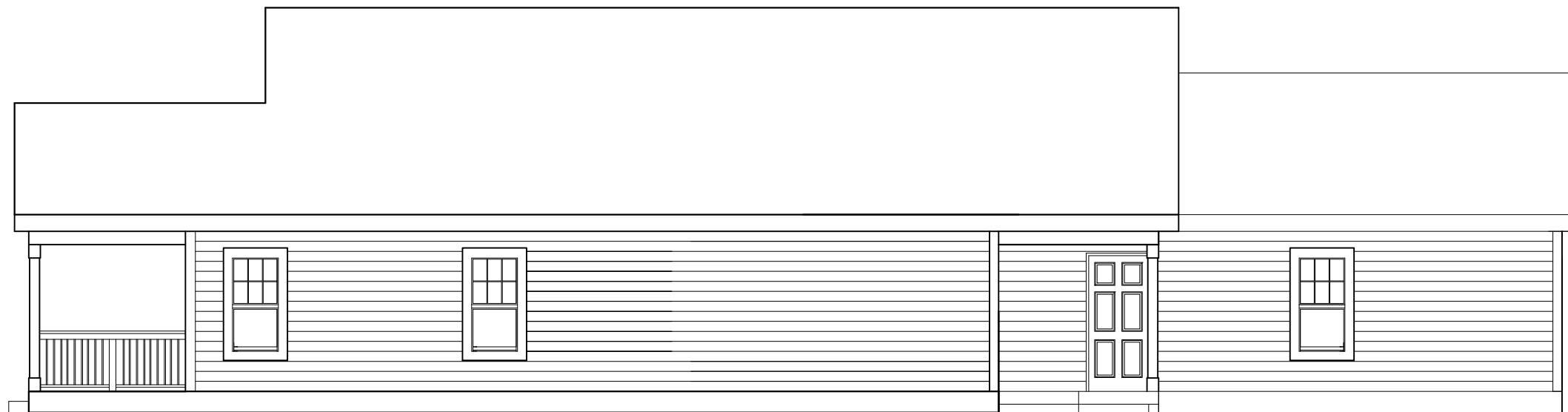
habitat
FOR S Y T H C O U N T Y

4A

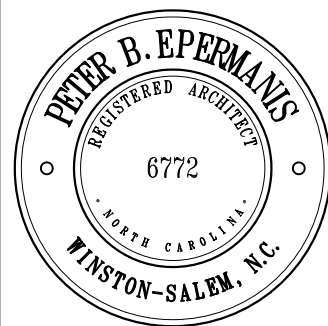
610 SERIES
WITH RECESSED GARAGE
ELEVATIONS



GARAGE SIDE ELEVATION



FAMILY ROOM SIDE ELEVATION



7/15/2023

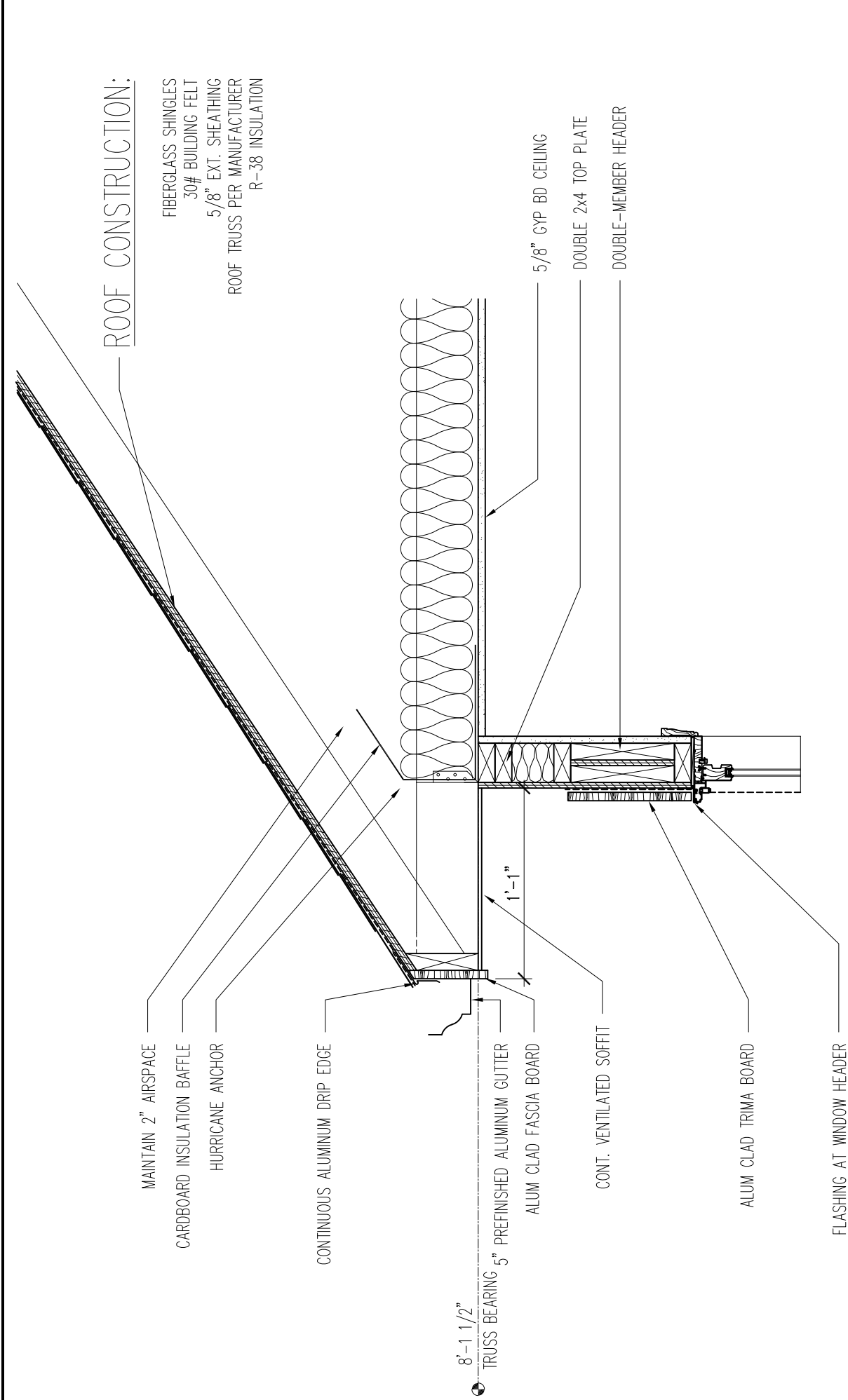
610 SERIES W/ RECESSED GARAGE - ELEVATIONS

4B

habitat
FOR S Y T H C O U N T Y



610 SERIES
WITH RECESSED GARAGE
ELEVATIONS



ROOF CONSTRUCTION:
 FIBERGLASS SHINGLES
 30# BUILDING FELT
 5/8" EXT. SHEATHING
 ROOF TRUSS PER MANUFACTURER
 R-38 INSULATION

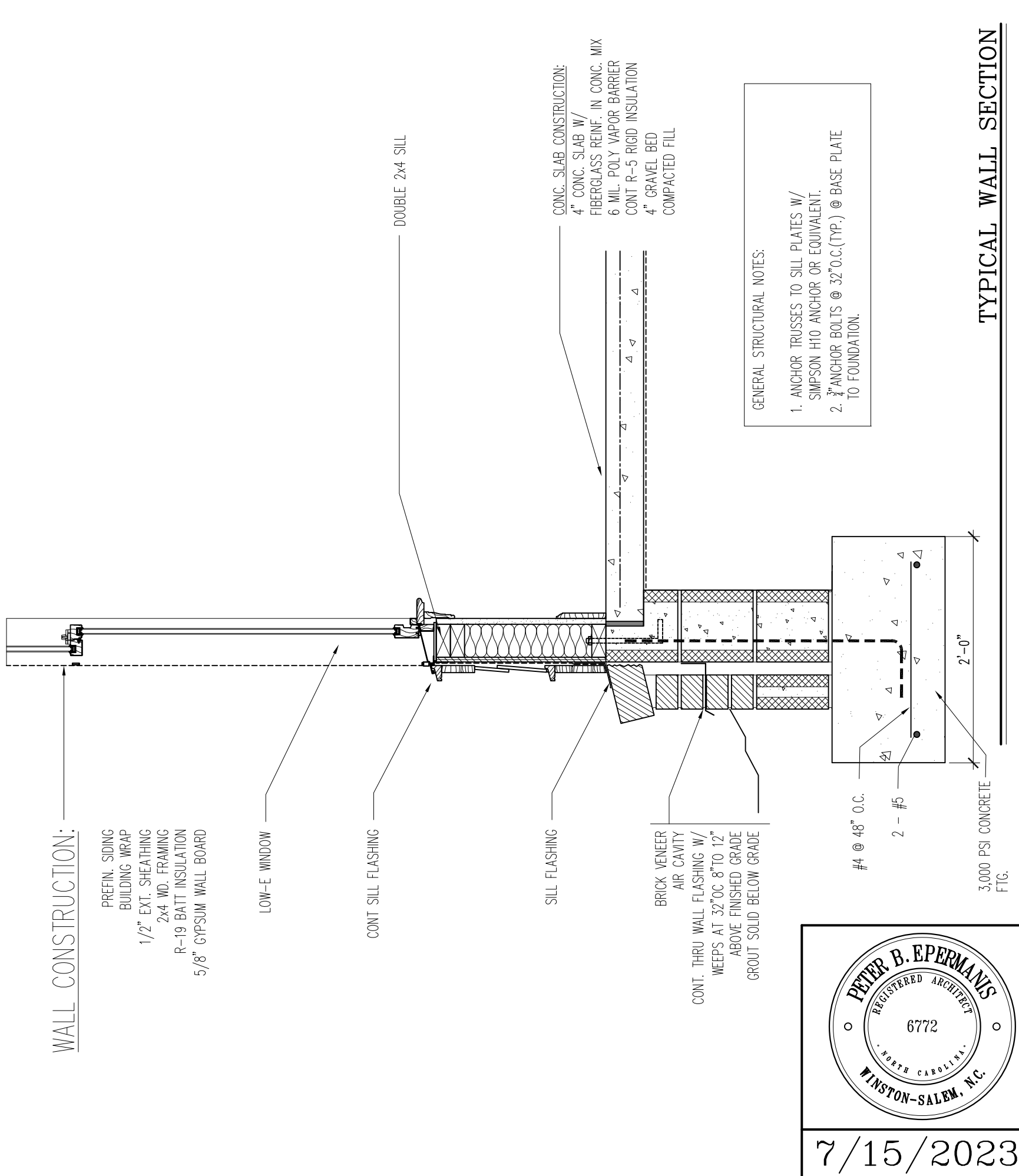
MAINTAIN 2" AIRSPACE
 CARDBOARD INSULATION BAFFLE
 HURRICANE ANCHOR

CONTINUOUS ALUMINUM DRIP EDGE
 1'-1"
 TRUSS BEARING 8'-1 1/2"
 5" PREFINISHED ALUMINUM GUTTER
 ALUM CLAD FASCIA BOARD

5/8" GYP BD CEILING
 DOUBLE 2x4 TOP PLATE
 DOUBLE-MEMBER HEADER

CONT. VENTILATED SOFFIT
 ALUM CLAD TRIMA BOARD

FLASHING AT WINDOW HEADER



WALL CONSTRUCTION:
 PREFIN. SIDING
 BUILDING WRAP
 1/2" EXT. SHEATHING
 2x4 WD. FRAMING
 R-19 BATT INSULATION
 5/8" GYPSUM WALL BOARD

LOW-E WINDOW

CONT SILL FLASHING

SILL FLASHING

BRICK VENEER
 AIR CAVITY
 CONT. THRU WALL FLASHING W/
 WEEPS AT 32" OC 8" TO 12"
 ABOVE FINISHED GRADE
 GROUT SOLID BELOW GRADE

#4 @ 48" O.C.
 2 - #5
 2'-0"
 3,000 PSI CONCRETE
 FTG.

CONC. SLAB CONSTRUCTION:
 4" CONC. SLAB W/
 FIBERGLASS REINF. IN CONC. MIX
 6 MIL. POLY VAPOR BARRIER
 CONT R-5 RIGID INSULATION
 4" GRAVEL BED
 COMPACTED FILL

GENERAL STRUCTURAL NOTES:
 1. ANCHOR TRUSSES TO SILL PLATES W/
 SIMPSON H10 ANCHOR OR EQUIVALENT.
 2. 3/4" ANCHOR BOLTS @ 32" O.C. (TYP.) @ BASE PLATE
 TO FOUNDATION.



7/15/2023

TYPICAL WALL SECTION

habitat
 FORSYTH COUNTY

TYPICAL WALL SECTION

5