

Northwest Boulevard **Safety Project**

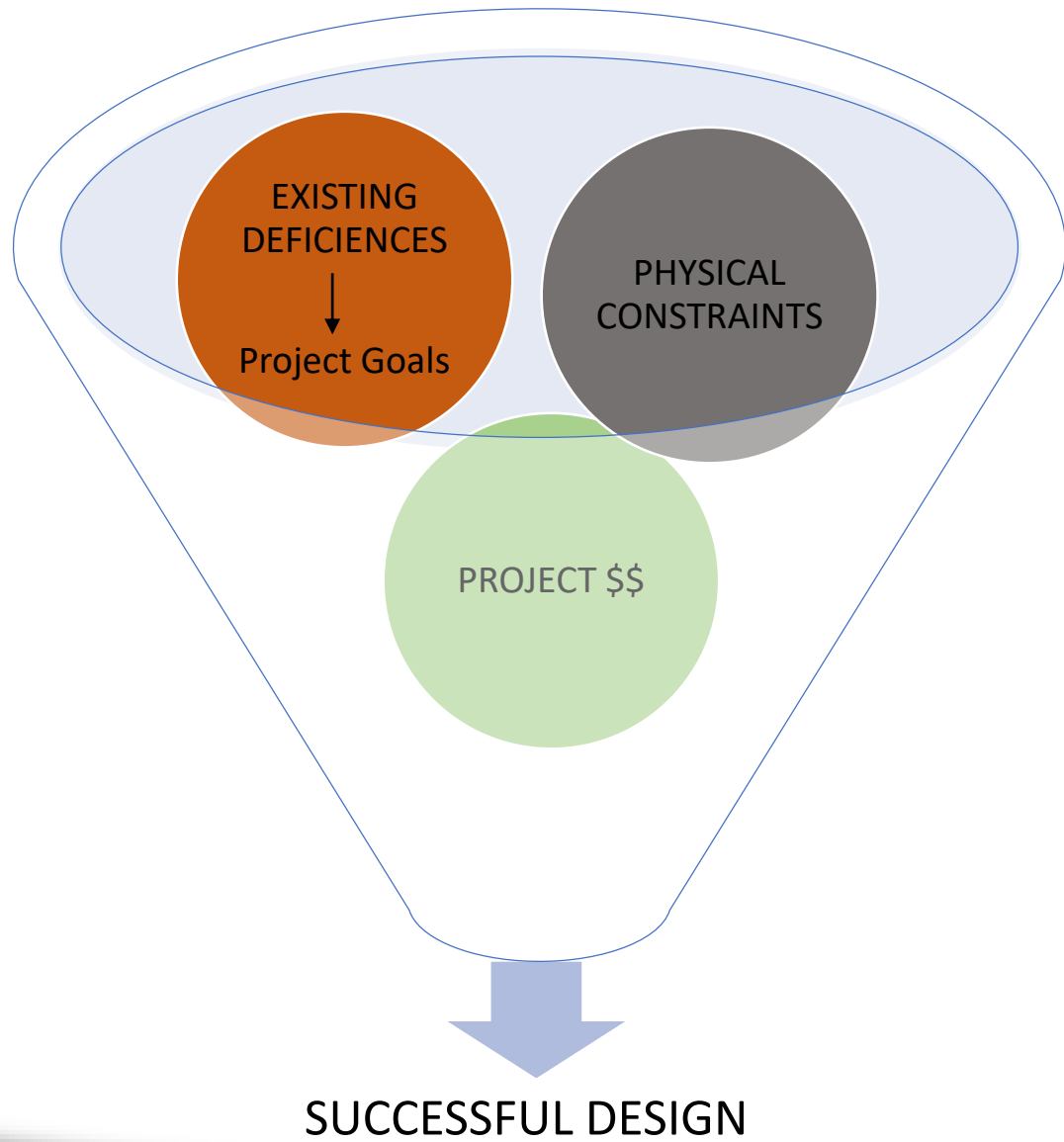
Presented By



Project Goals:

- ✓ Safer Pedestrian Crossings
- ✓ Improve Efficiency and Safety During Pick Up/Drop Off for Schools
- ✓ Minimize Dart Out Pedestrian Crossings (Due to Parallel Parking)
- ✓ Improve Student Channelization and Waiting Areas
- ✓ Move Parent Pick Up Lines On-Site (Improve Overall Traffic Flow and Safety)
- ✓ Traffic Calming – Speed and Conflict Management
- ✓ Maintain Bike Lanes
- ✓ Maximize Parking

SAFER FOR ALL ROAD USERS



Safety for Pedestrians/Students



Safety After School Hours (No Crossing Guard)



Turning Vehicles and Pedestrians Multiplies Conflicts / Crossing Guard Safety Issues



Safety for Staff and Crossing Guards



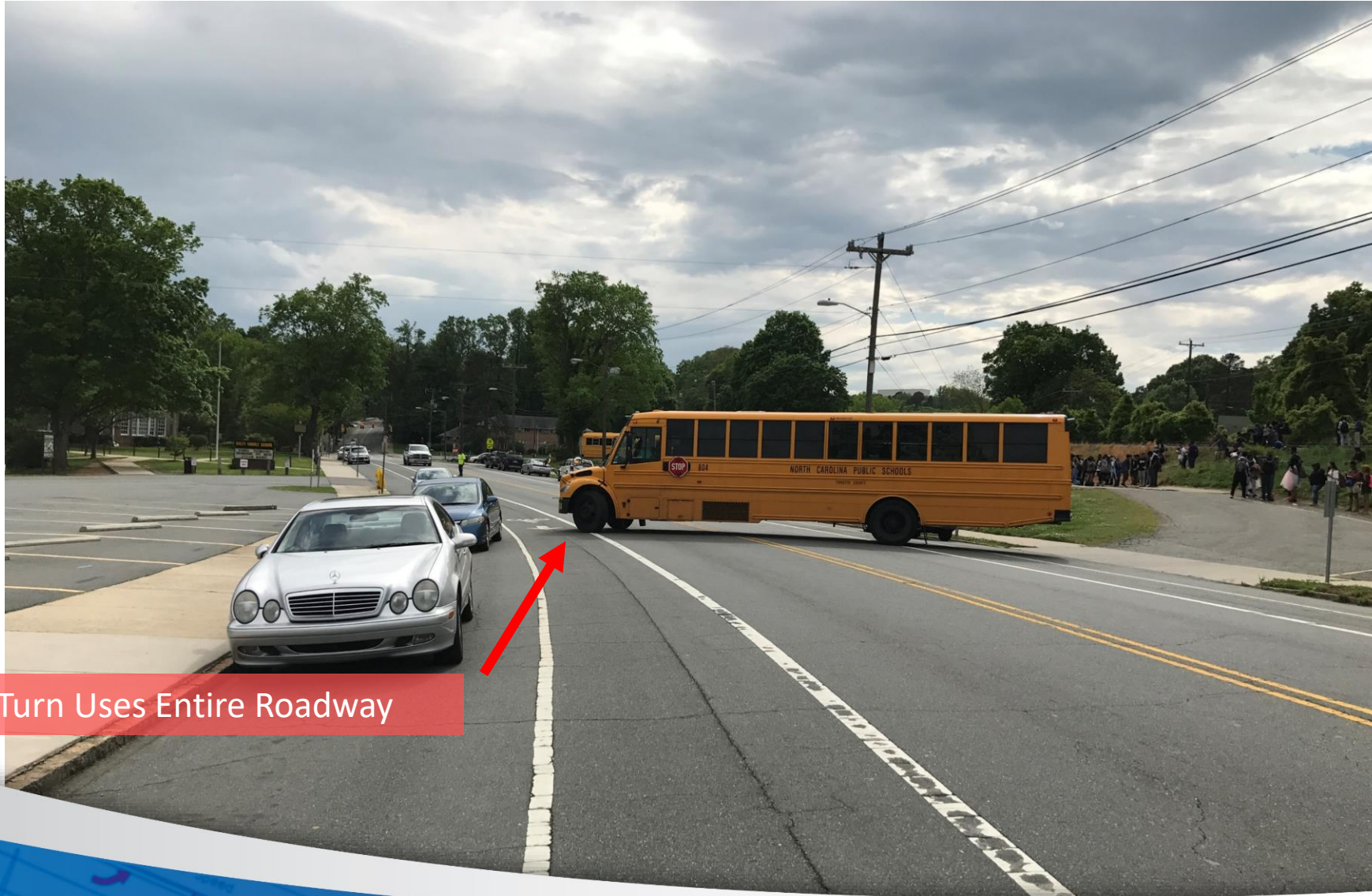
Traffic Delay and Staffing for Bus Exits



Accommodations for ADA



Bus Access and Safety



Bus Turn Uses Entire Roadway

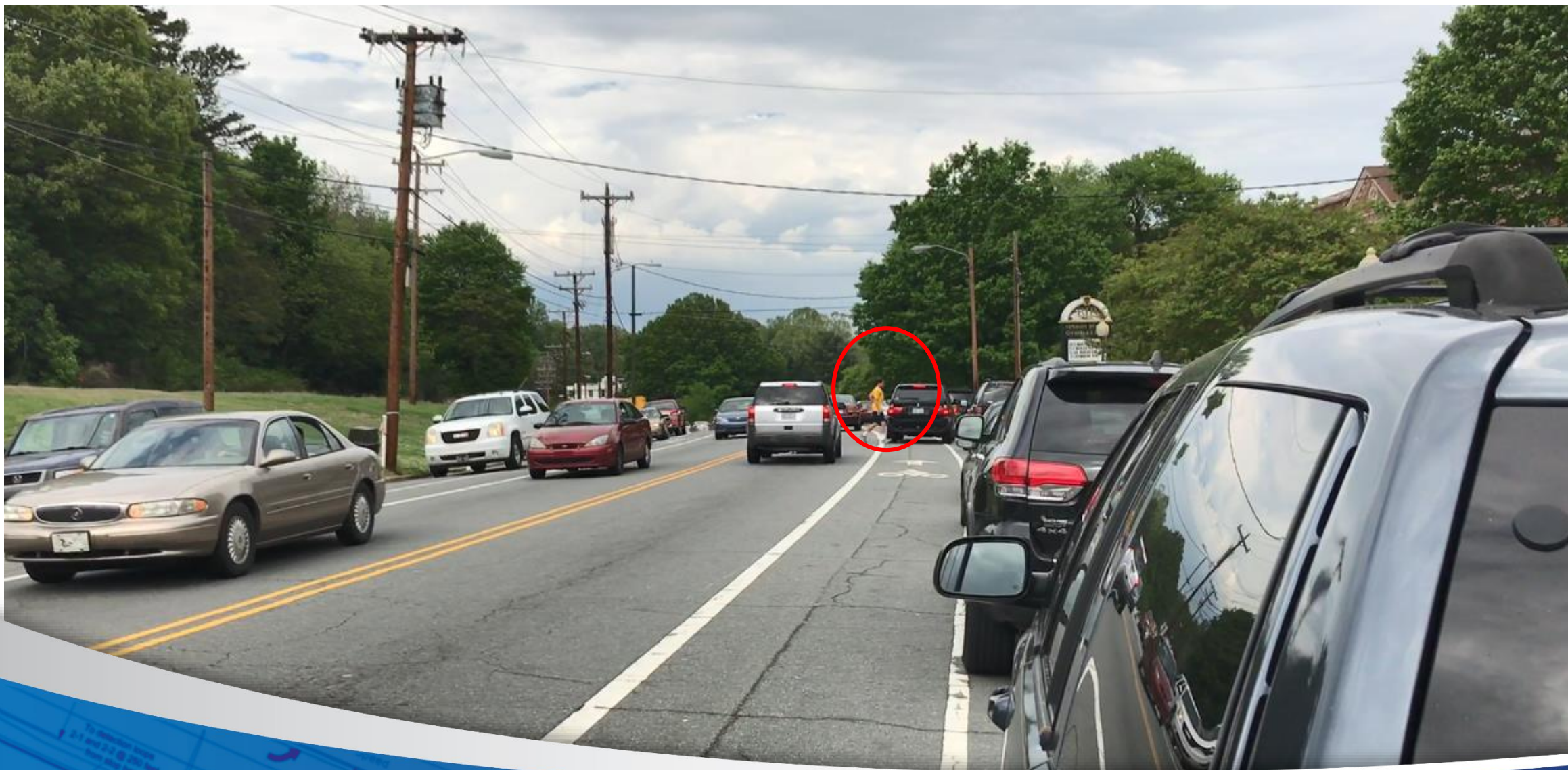
Traffic Delays Due to School



Parallel Parking – Encourages Crossing



Dart Out Pedestrians



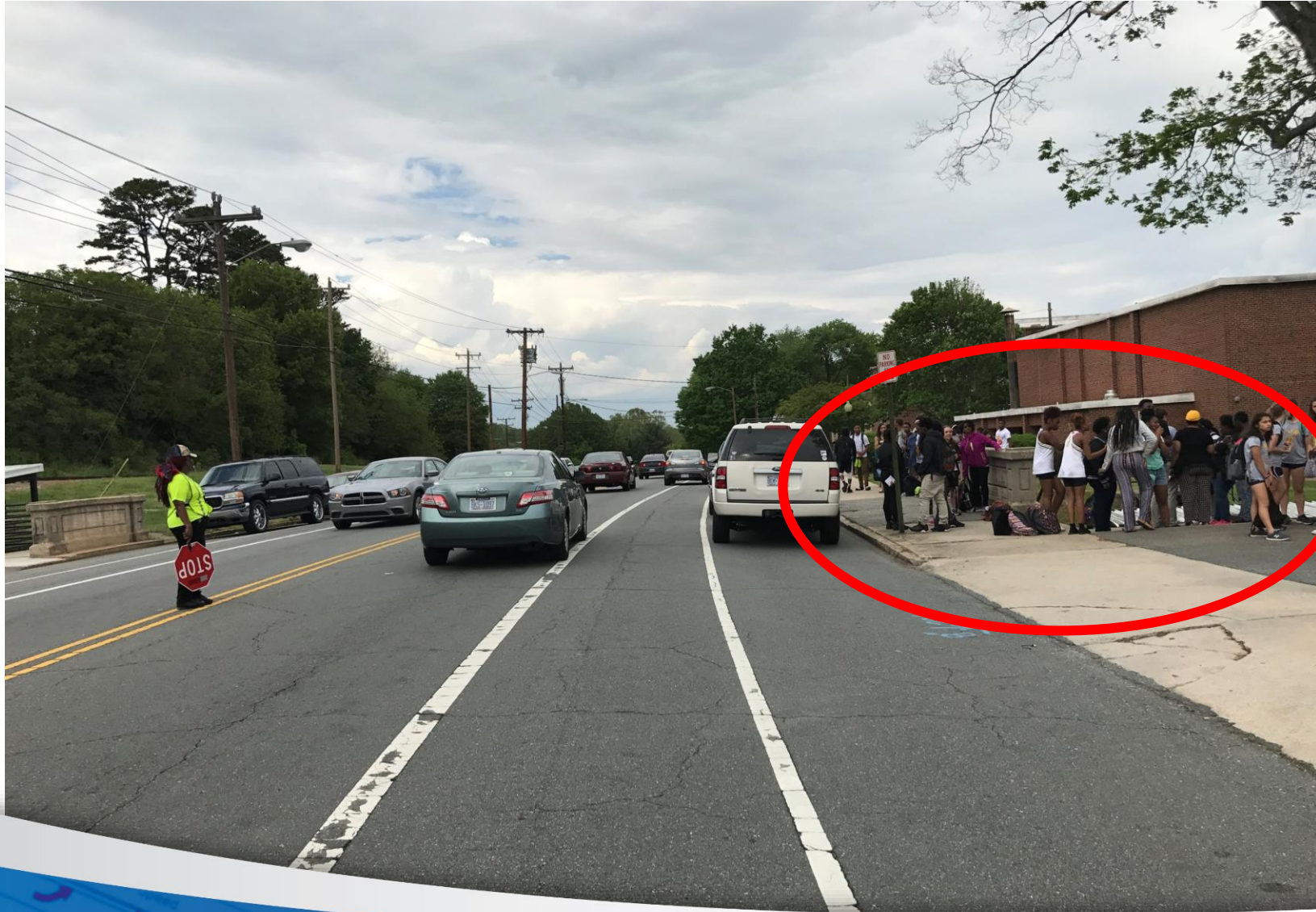
Parallel Parking Limits Sight Lines



Bike Safety (Dooring from Parallel Parked Vehicles)



Students Wait Close to Moving Vehicles

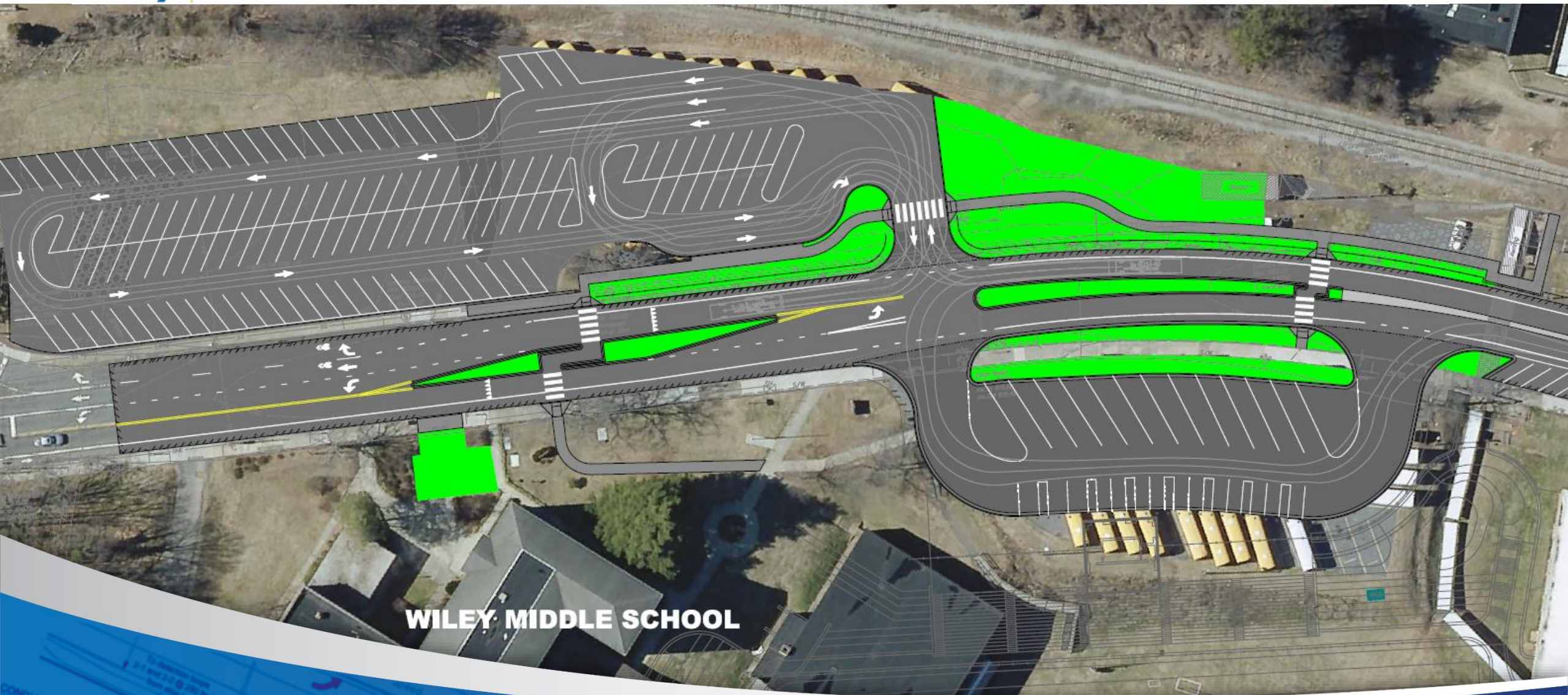


Parent Pick Up Circulation Efficiency and Safety



Excessive Driveways (Poor Delineation)





WILEY MIDDLE SCHOOL

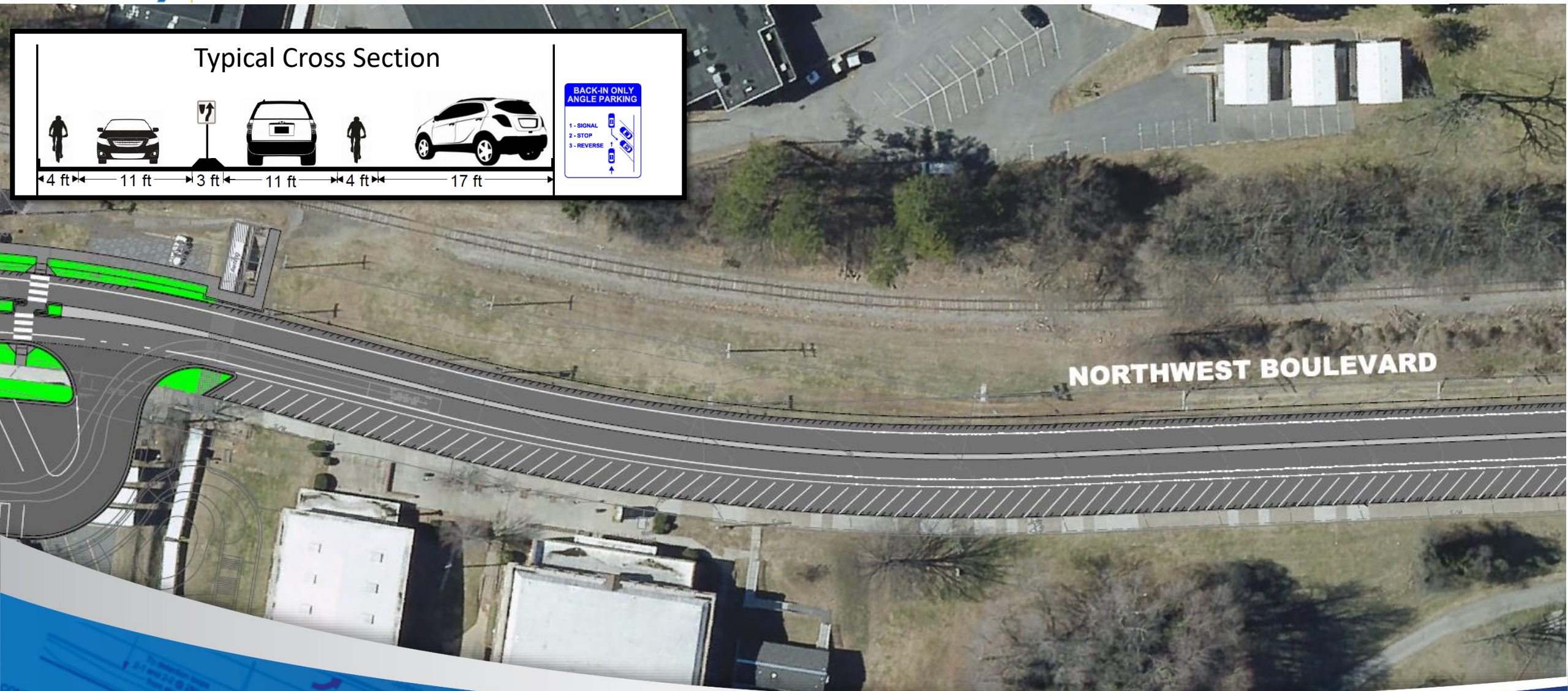
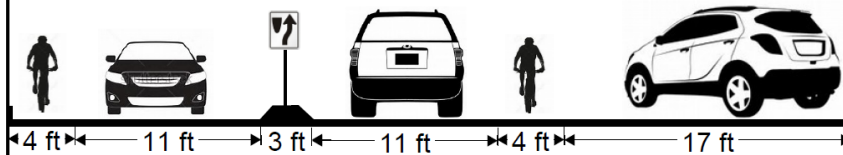
Proposed Improvements



Rectangular Rapid Flashing Beacon (RRFB)



Typical Cross Section



Proposed Improvements