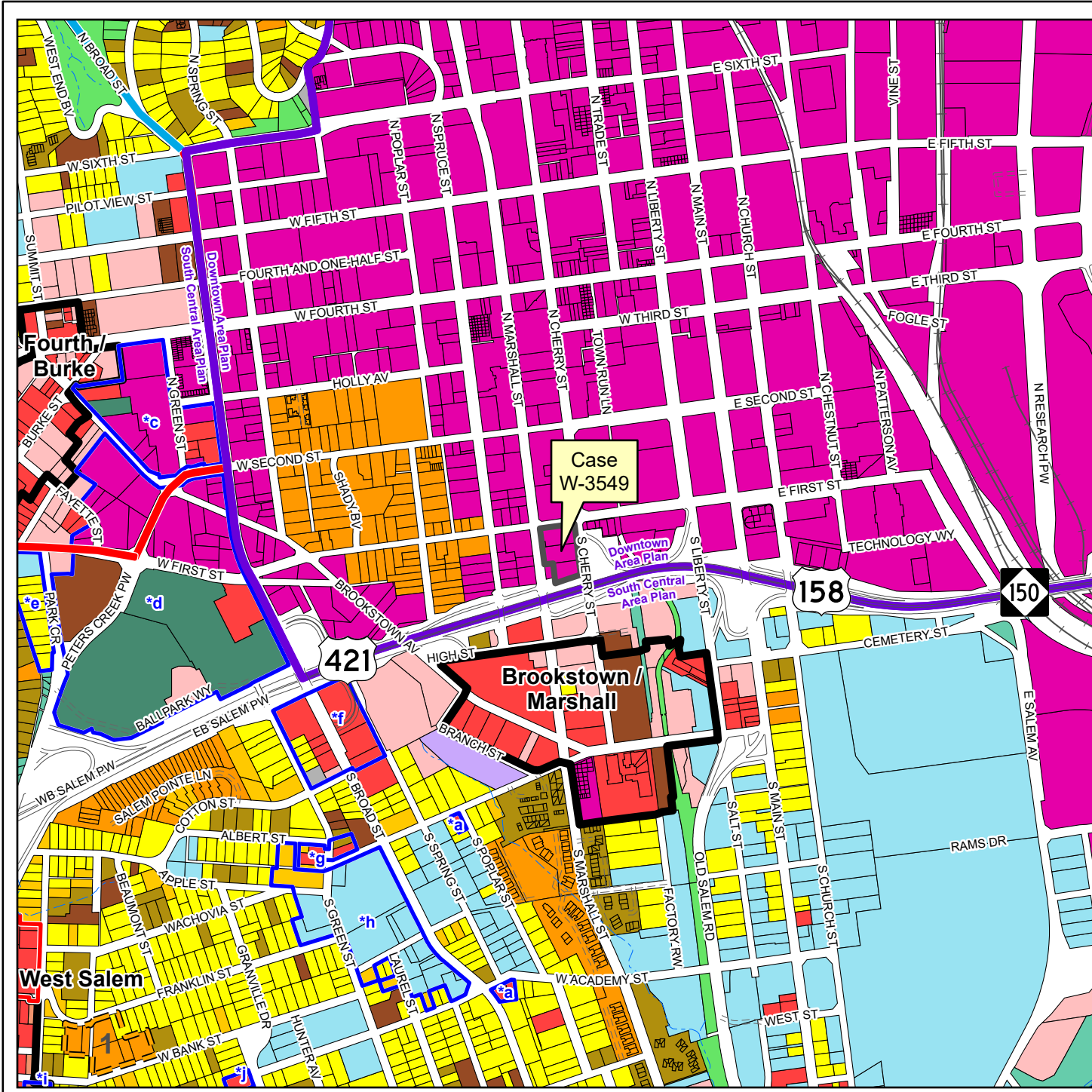


W-3549 Area Plan Recommendations

Downtown Winston-Salem Area Plan Update, 2013
(Proposed land uses shown are generalized. See area plan for specific recommendations.)



- Rezoning
- Activity Center
- Special Land Use Condition Areas
- Proposed Land Use**
 - Single-Family Residential (0-8 DU/Ac)
 - Urban Residential Infill
 - Low-Density Attached Residential (0-8 DU/Ac)
 - Intermediate-Density Residential (8.1-18 DU/Ac)
 - High-Density Residential (over 18 DU/Ac)
 - Office
 - Office/Low-Intensity Commercial
 - Commercial
 - Mixed-Use Development
 - Industrial
 - Institutional
 - Park
 - Open space
 - Commercial Recreation
 - Utilities
- Proposed Growth Corridor**
 - Urban/Suburban Form - Single-Family Residential
 - Urban Form - Commercial/Office/Multifamily
- Residential Opportunity Areas**
 - Low-Density Attached Residential (0-8 DU/Ac)

