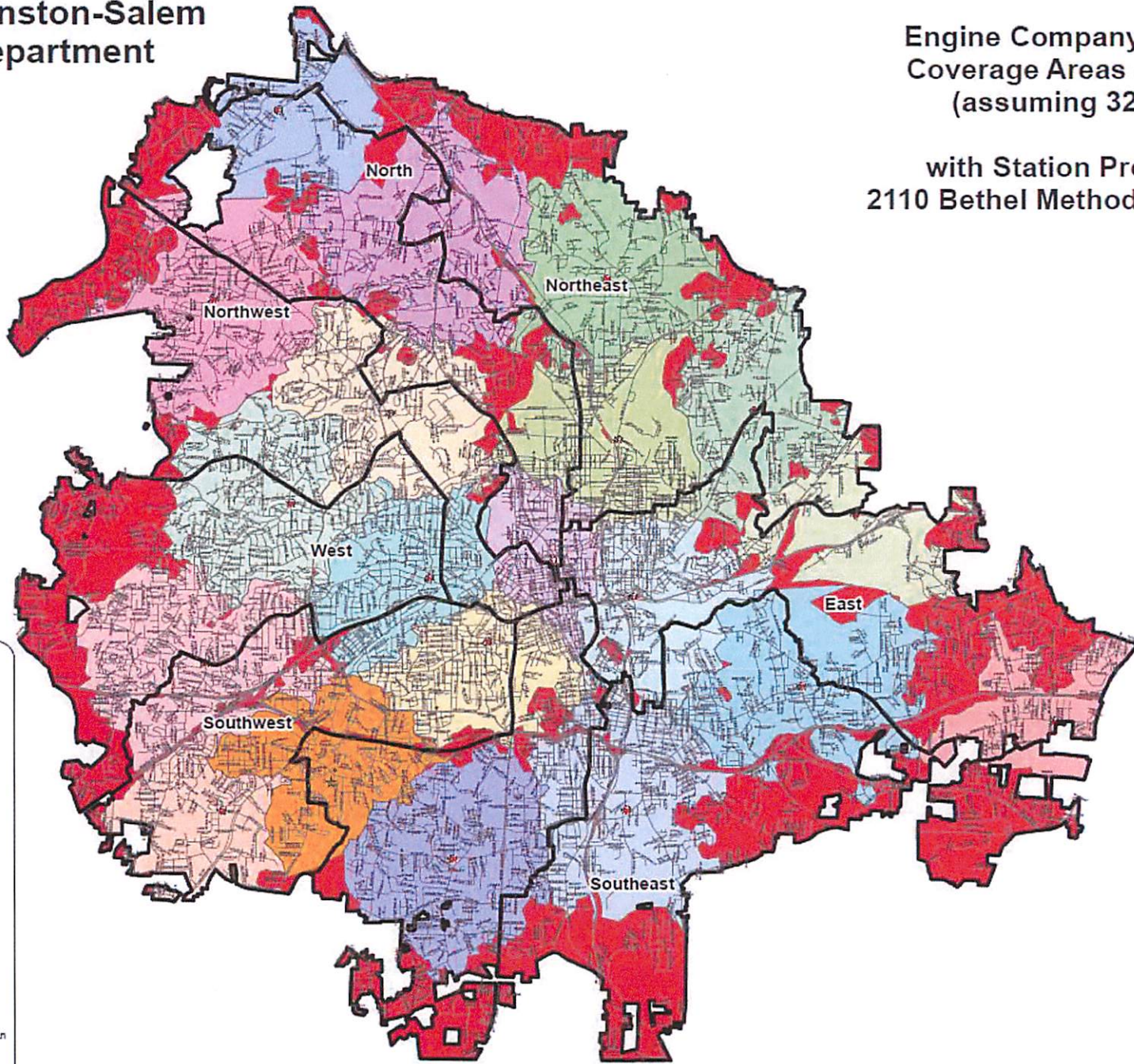


City of Winston-Salem Fire Department

Engine Company Response
Coverage Areas - 4 Minutes
(assuming 32.5 mph)

with Station Proposed at
2110 Bethel Methodist Church Ln



- Fire Station
- Potential Station Site
- Coverage Area**
- Engine 1
- Engine 2
- Engine 3
- Engine 4
- Engine 5
- Engine 6
- Engine 7
- Engine 8
- Engine 9
- Engine 10
- Engine 11
- Engine 12
- Engine 14
- Engine 15
- Engine 16
- Engine 17
- Engine 18
- Engine 19
- Engine 20
- 2110 Bethel Methodist Church Ln
- Area Not Covered
- WS Wards
- Streets

Map Created: March 23, 2018

City of Winston-Salem Fire Department
MapSource

Disclaimer:
MapSource Time Accuracy: 2018 03 23 10:00
and other attributes of the data are the property of the City of Winston-Salem Fire Department.