

THE LOFTS AT MOTOR ROAD

WINSTON SALEM, NC



PROJECT INFO:

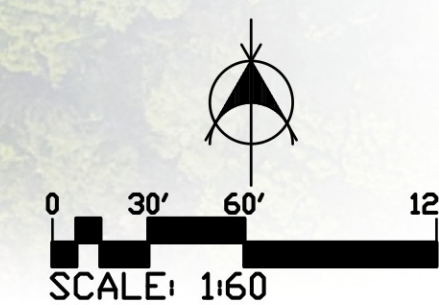
SITE ACREAGE: 18 +/- ACRES
 216 APARTMENT UNITS
 ~12 UNIT PER ACRE

- (7) 3-STORY APARTMENT BUILDING
- (1) 1-STORY CLUBHOUSE

378 PARKING SPACES REQUIRED @ 1.75 PER UNIT
 378 TOTAL PARKING SPACES PROVIDED

Unit Type	Unit Heated Area	Unit Net Area	No. of Units	Heated Total	Net Total
1 BEDROOM "A1"	715	756	36	25,740	27,216
2 BEDROOM "B1"	980	1,026	96	94,080	98,496
3 BEDROOM "C1"	1,152	1,203	48	55,296	57,744
3 BEDROOM "C2"	1,152	1,203	36	41,472	43,308
Total			216	216,588	226,764

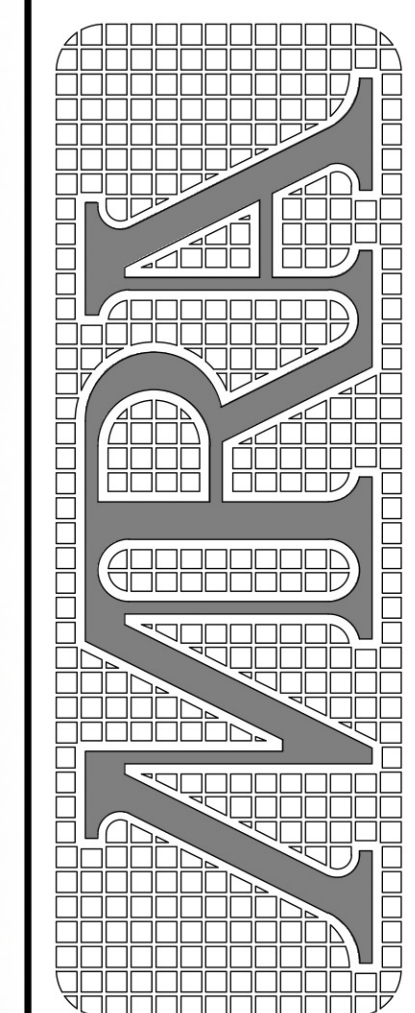
1 CONCEPTUAL ARCHITECTURAL SITE PLAN
 1:60" = 1'-0"



REVISIONS

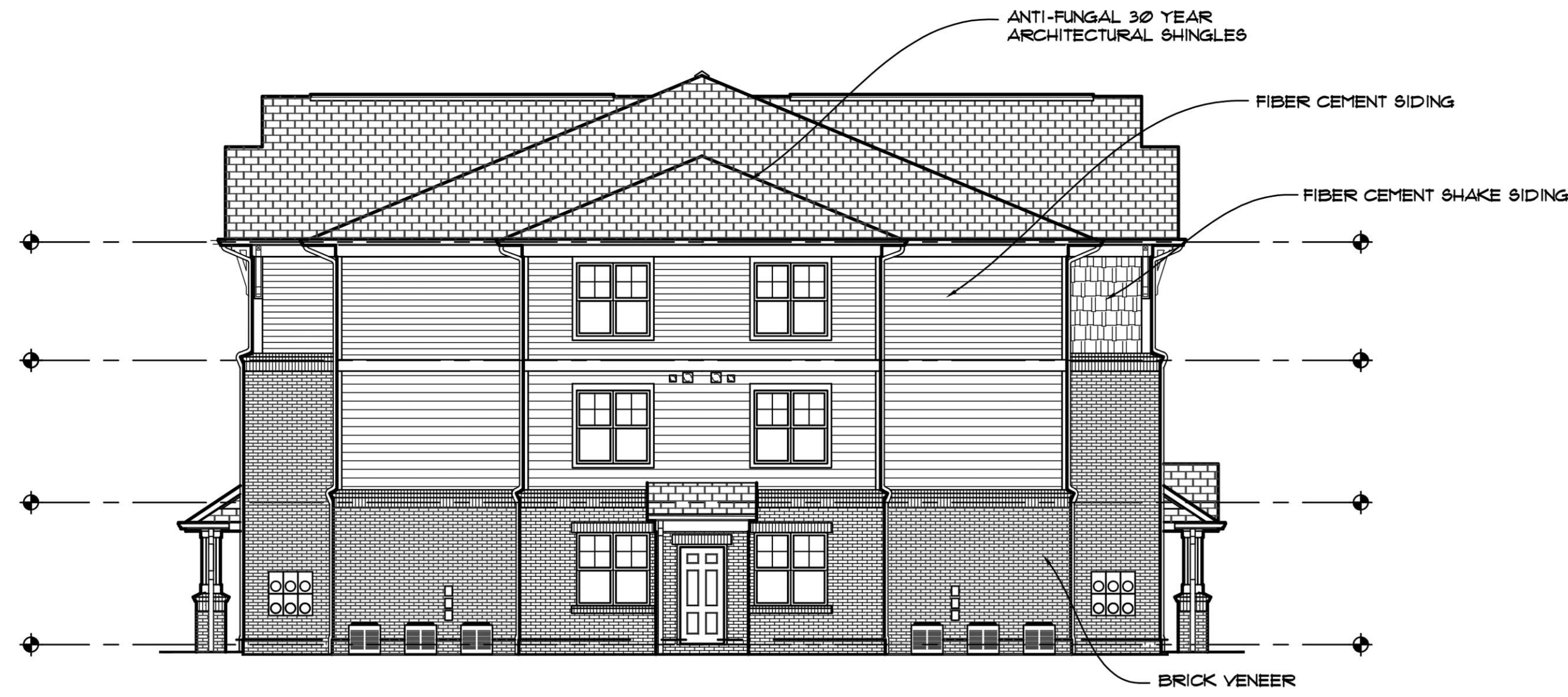
PROJECT NUMBER	2023-023
DATE ISSUED	1-28-2023
DRAWN BY	JAR
CHECKED BY	MTR

MARTIN RILEY ASSOCIATES - ARCHITECTS, P.C.
 215 CHURCH STREET SUITE 200 DECATUR GEORGIA 30030-3329 404-375-2800
 THE LOFTS AT MOTOR ROAD
 WINSTON SALEM, NC



CSP.1

CONCEPTUAL SITE PLAN



4 BUILDING 100, 200 & 700 - SIDE ELEVATION
1/8" = 1'-0"



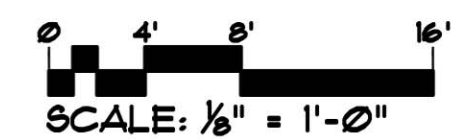
3 BUILDING 100, 200 & 700 - SIDE ELEVATION
1/8" = 1'-0"



2 BUILDING 100, 200 & 700 - REAR ELEVATION (PARKING LOT)
1/8" = 1'-0"

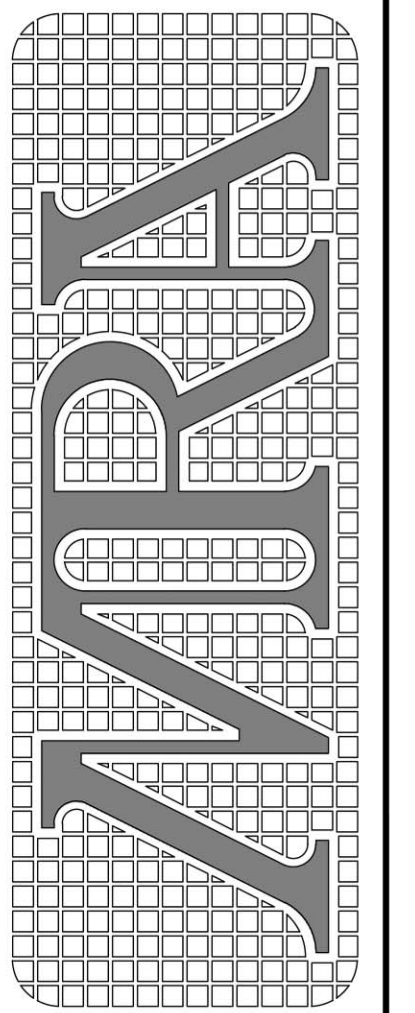


1 BUILDING 100, 200 & 700 - FRONT ELEVATION (PARKING LOT)
1/8" = 1'-0"



PROJECT NUMBER	2023-023
DATE ISSUED	T-26-23
DRAWN BY	JAR
CHECKED BY	MRL

MARTIN RILEY ASSOCIATES - ARCHITECTS, P.C.
 215 CHURCH STREET SUITE 200 DECATUR GEORGIA 30030-3329 404-373-2800
 THE LOFTS AT MOTOR ROAD
 WINSTON SALEM, NC
 BUILDING 100, 200 & 700 - ELEVATIONS



A31