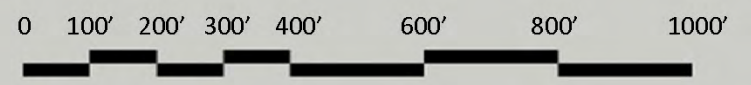
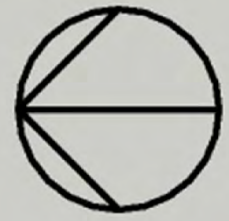


Composite Plan

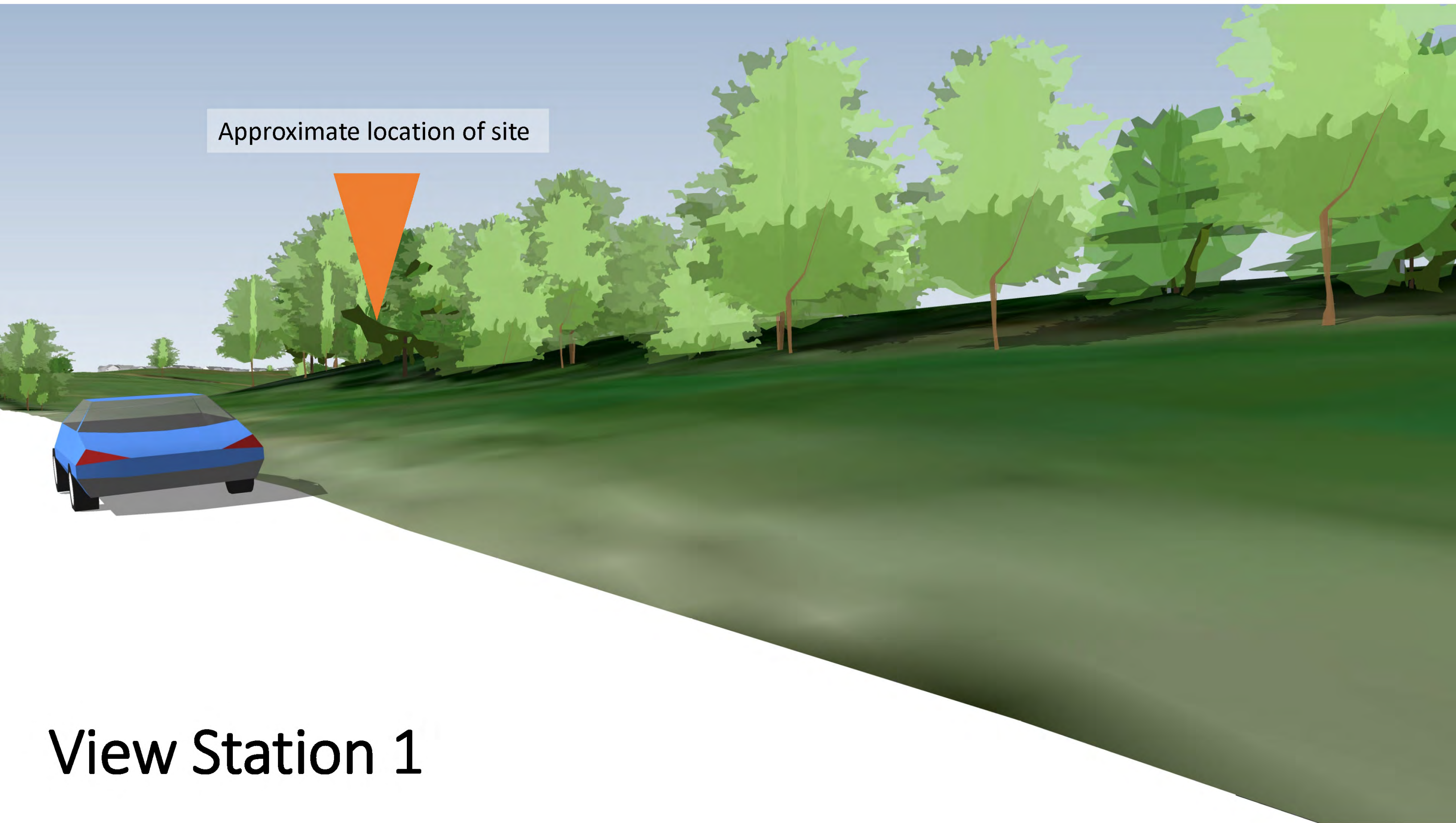


Approximate location of site



View Station 1

Approximate location of site

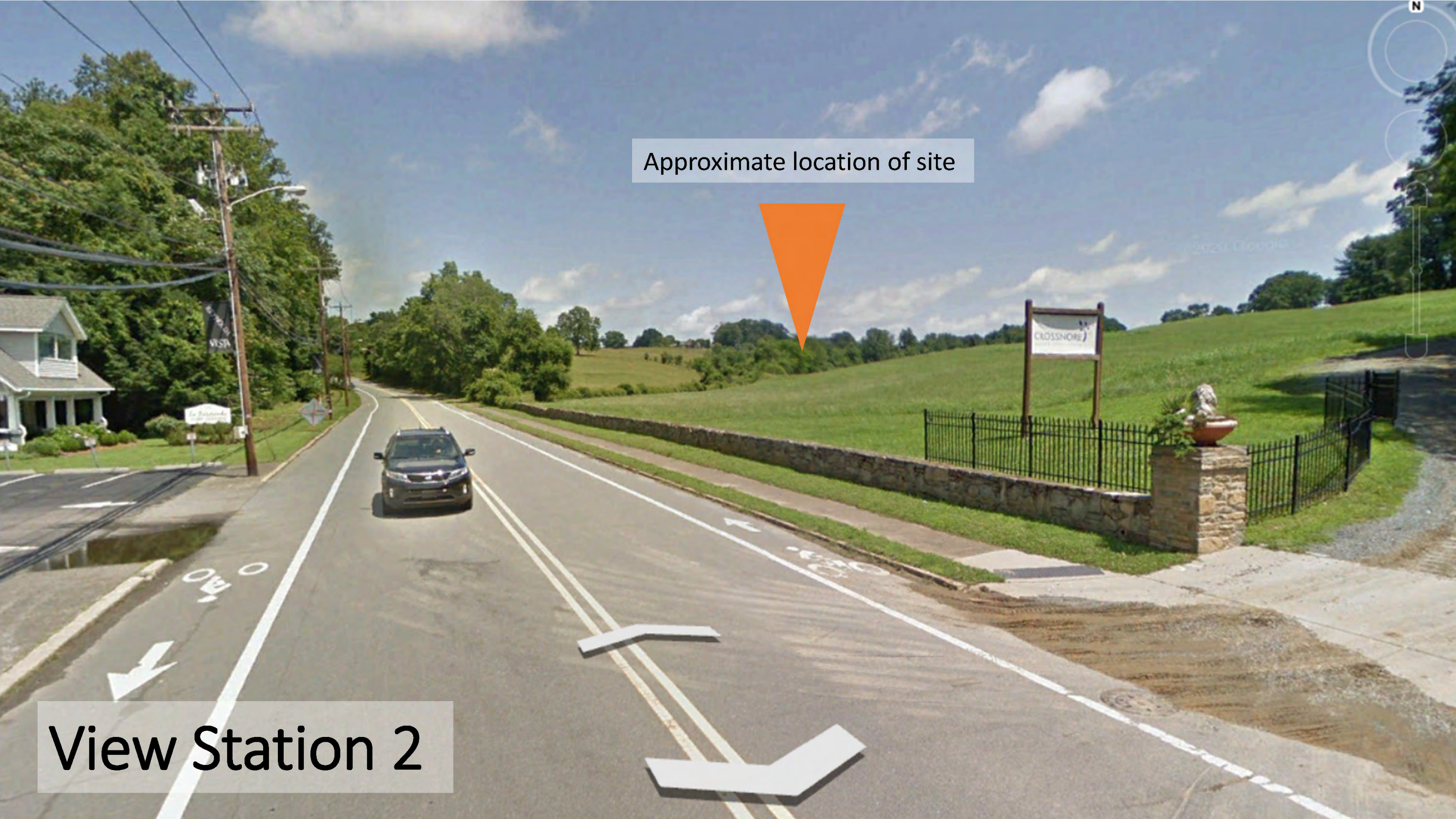


View Station 1

Approximate location of site



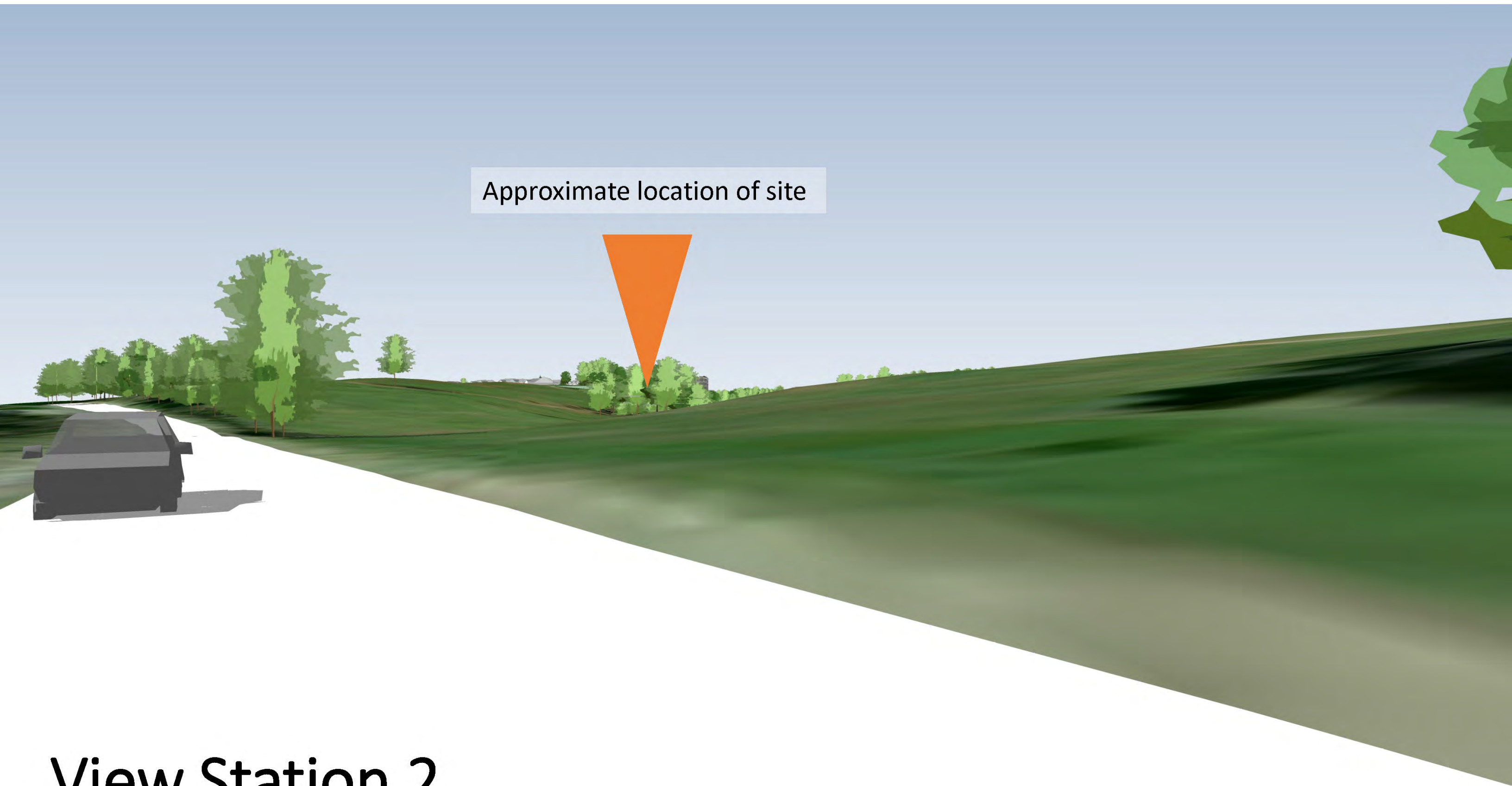
View Station 2



Approximate location of site



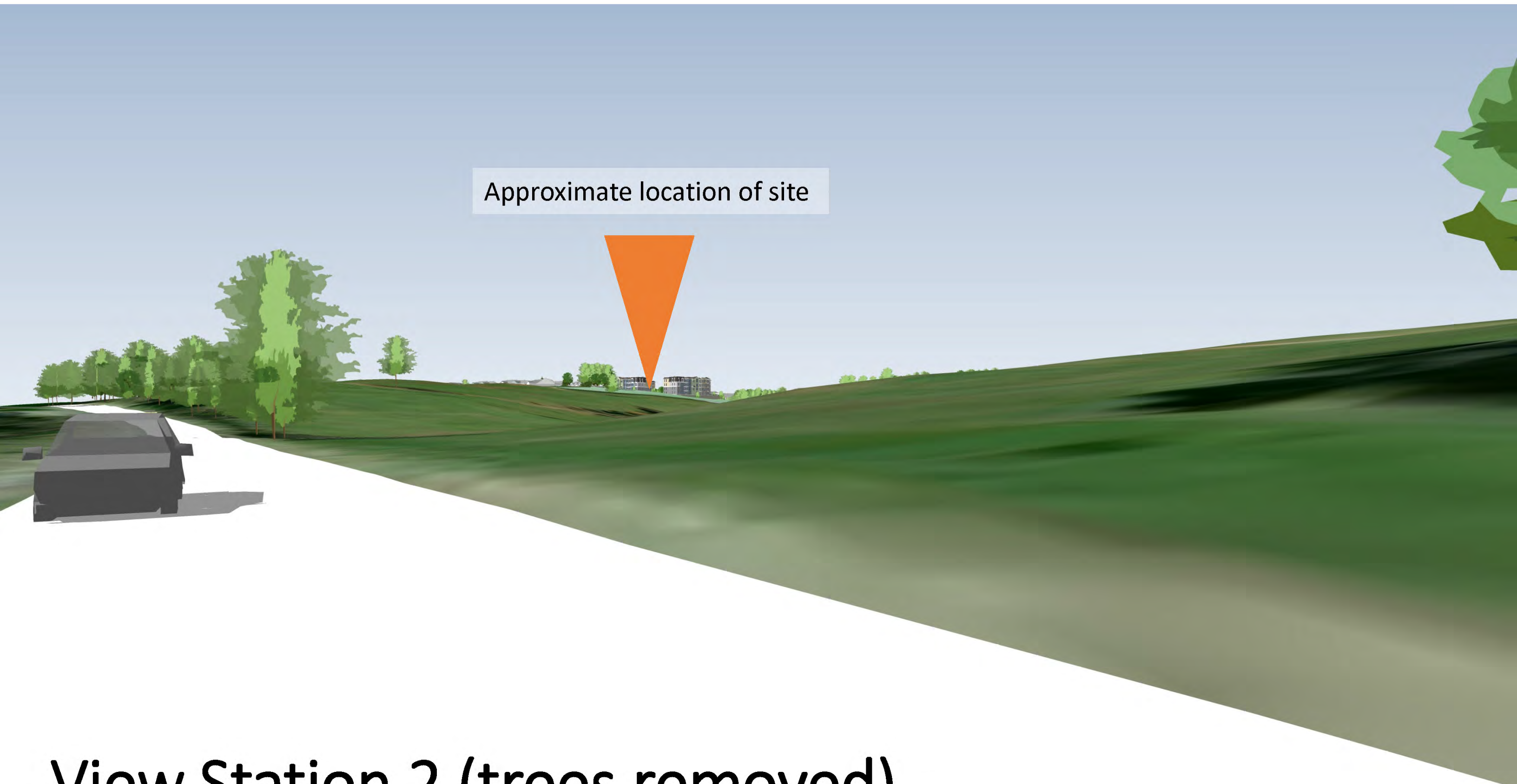
View Station 2



Approximate location of site



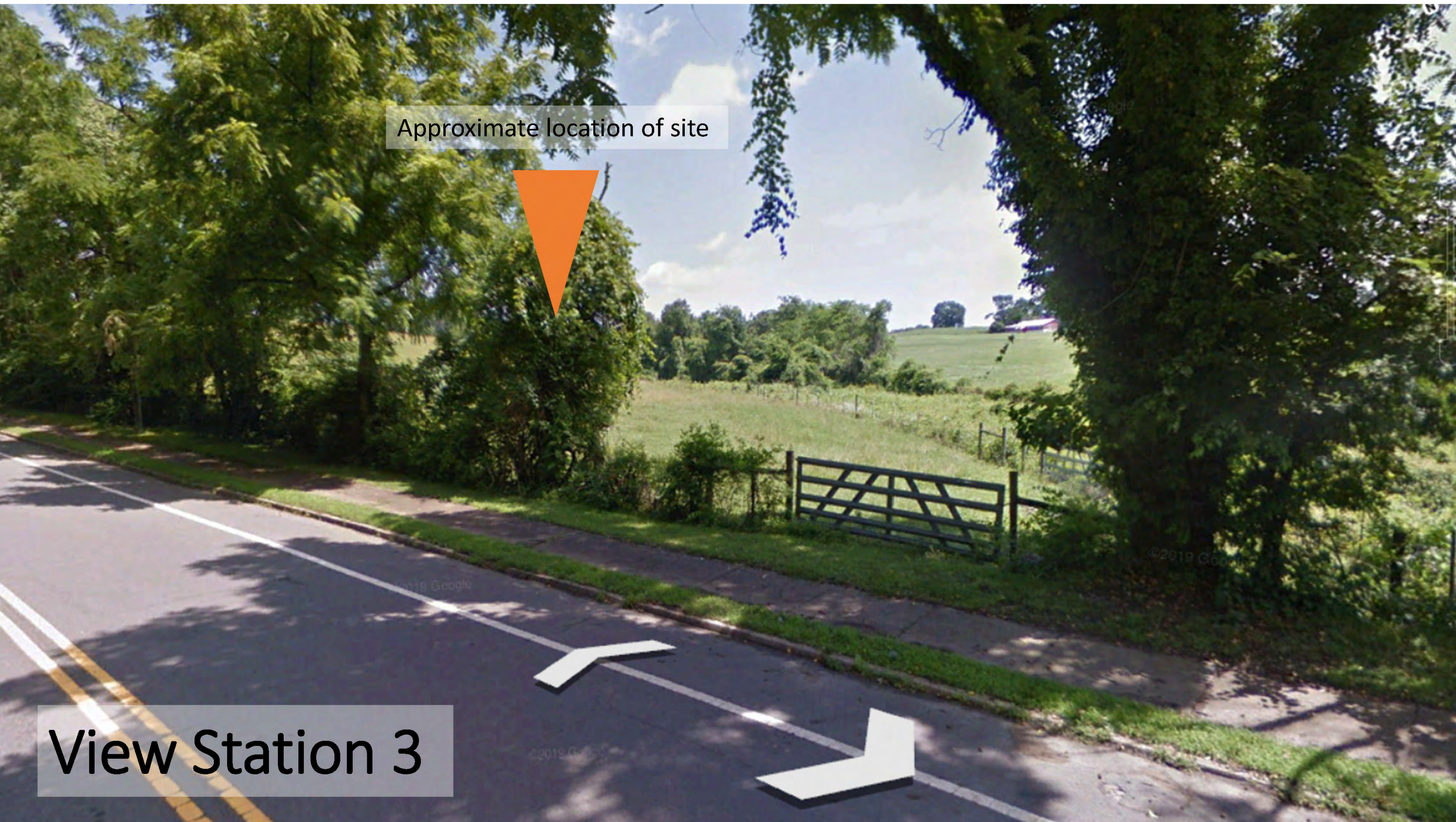
View Station 2 (trees removed)

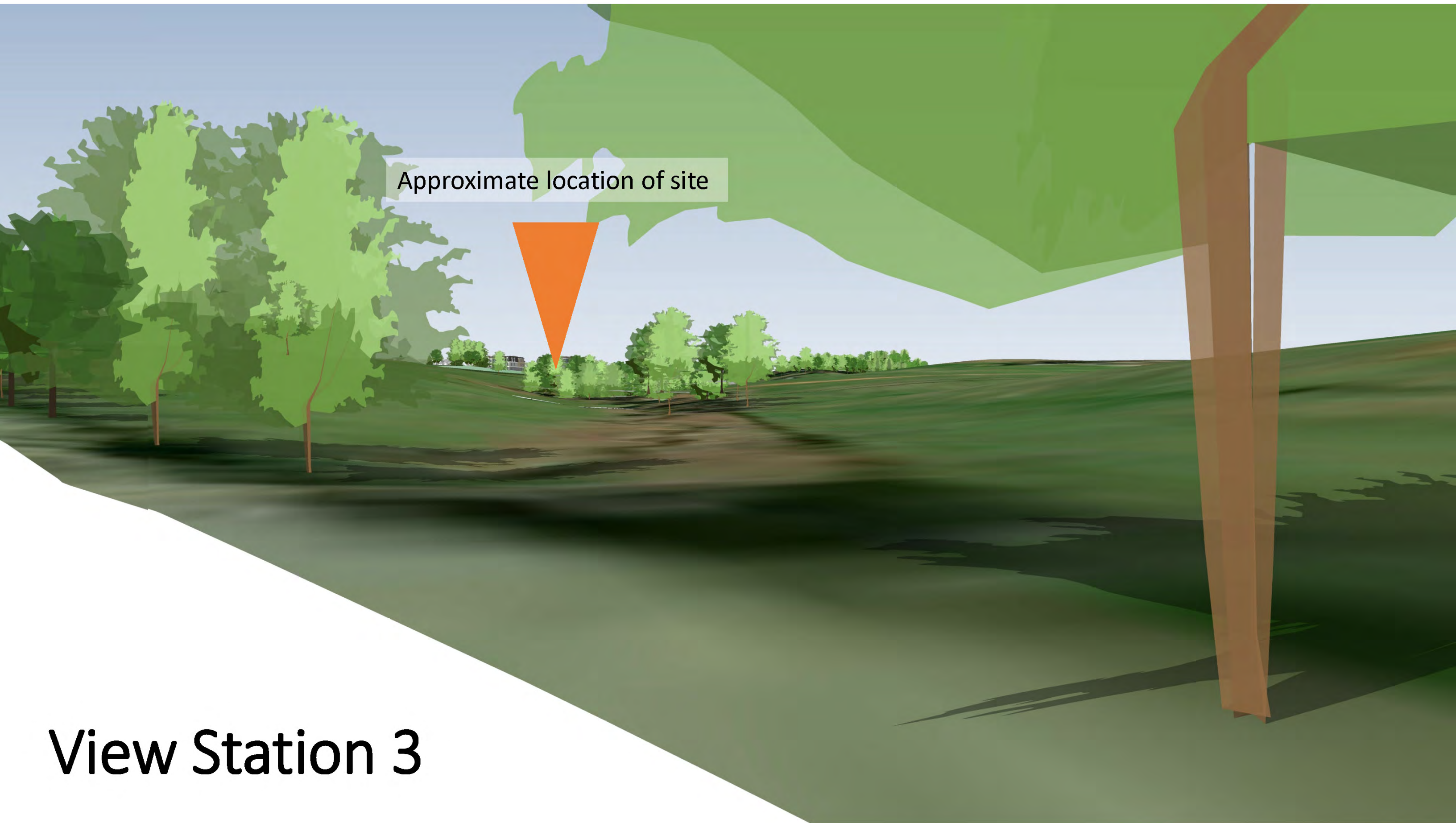


Approximate location of site



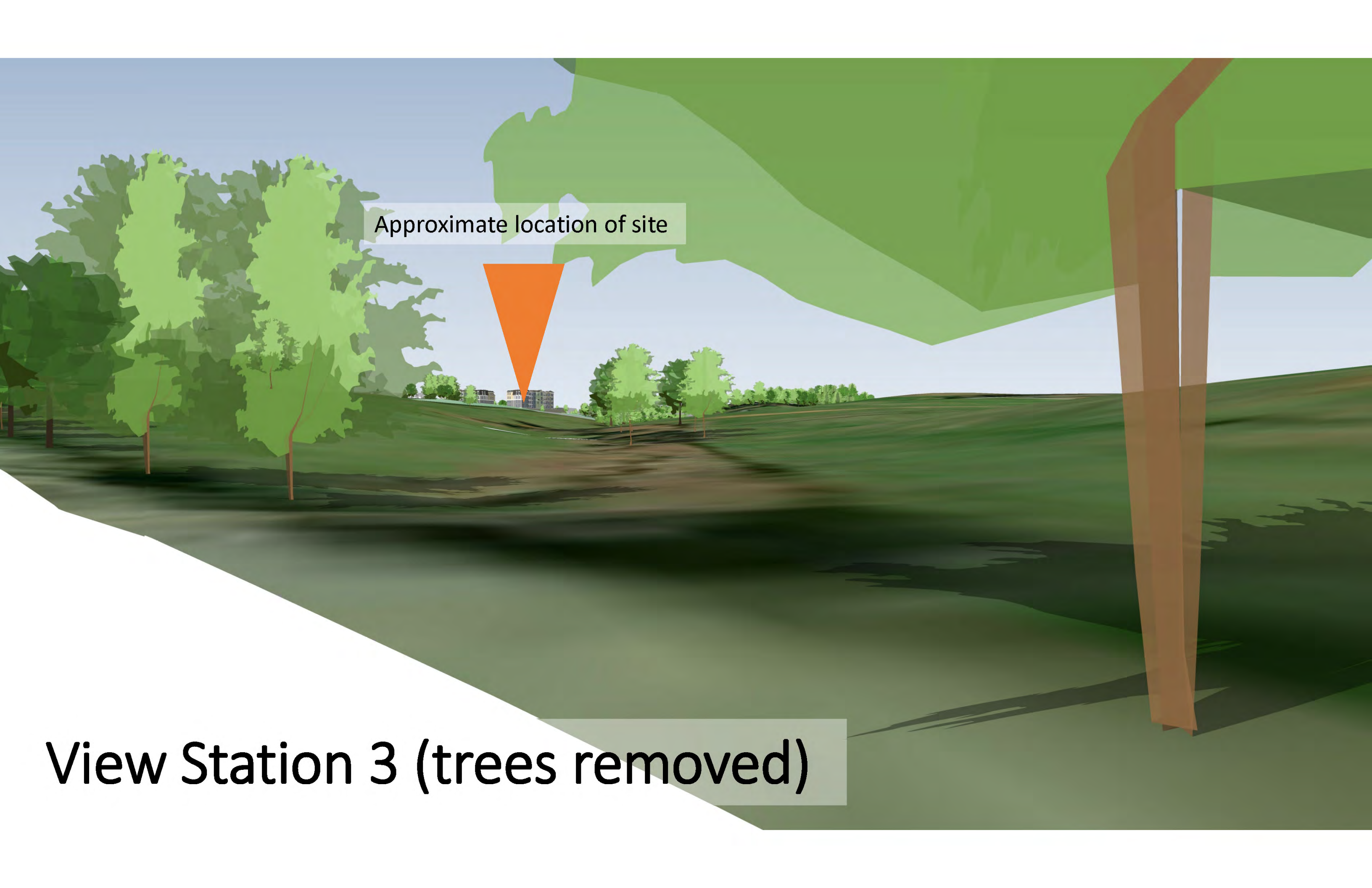
View Station 3





Approximate location of site

View Station 3

A 3D digital rendering of a landscape. The scene features rolling green hills under a clear blue sky. In the foreground, there are several trees with green foliage and brown trunks. A large, semi-transparent green tree canopy is visible in the upper right. In the middle ground, a dirt path or road winds through the hills. In the background, a cluster of buildings is visible on a hillside. A white rectangular callout box with the text "Approximate location of site" is positioned above an orange downward-pointing triangle that indicates the location of the site on the hillside.

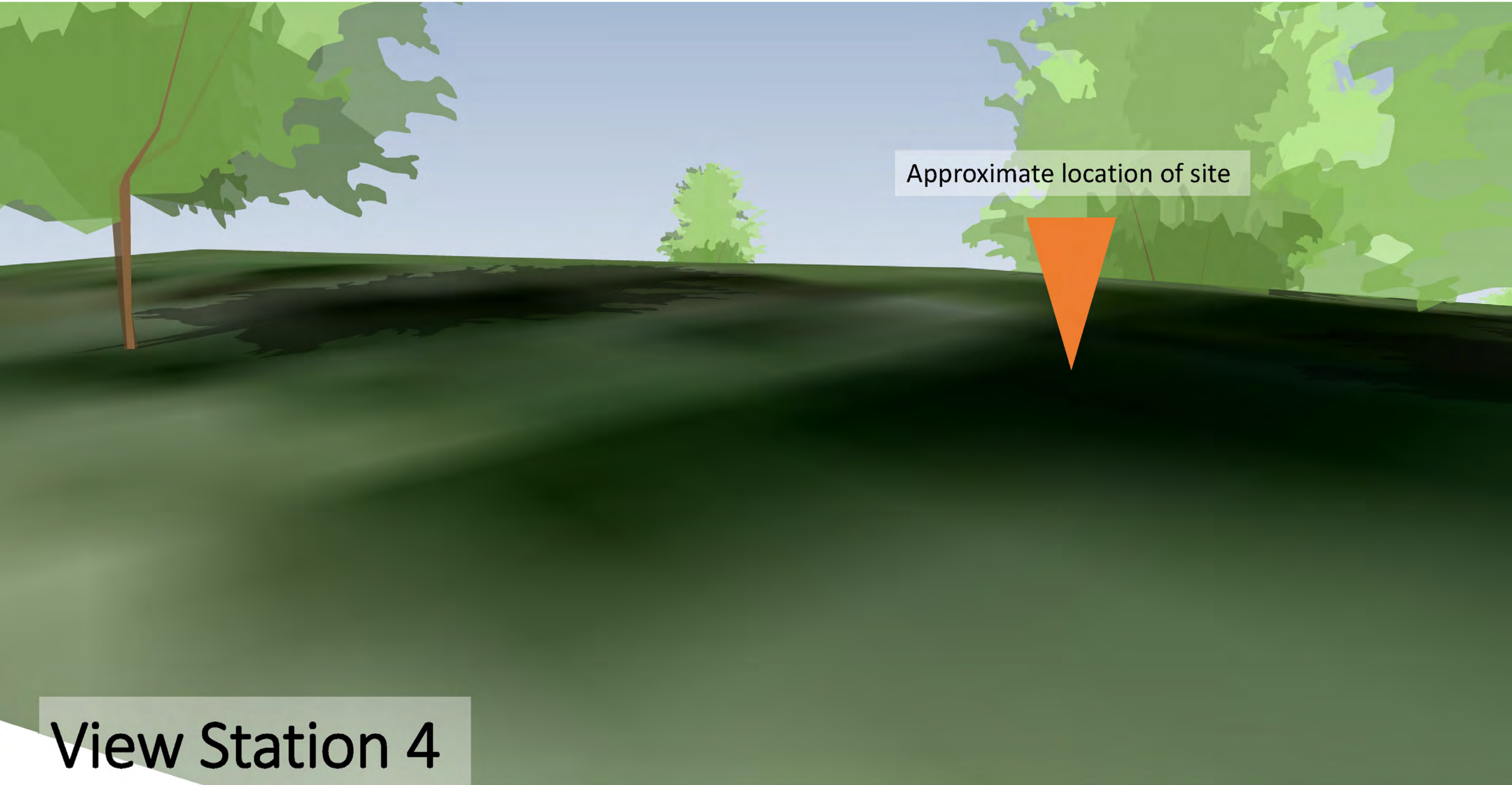
Approximate location of site

View Station 3 (trees removed)



Approximate location of site

View Station 4



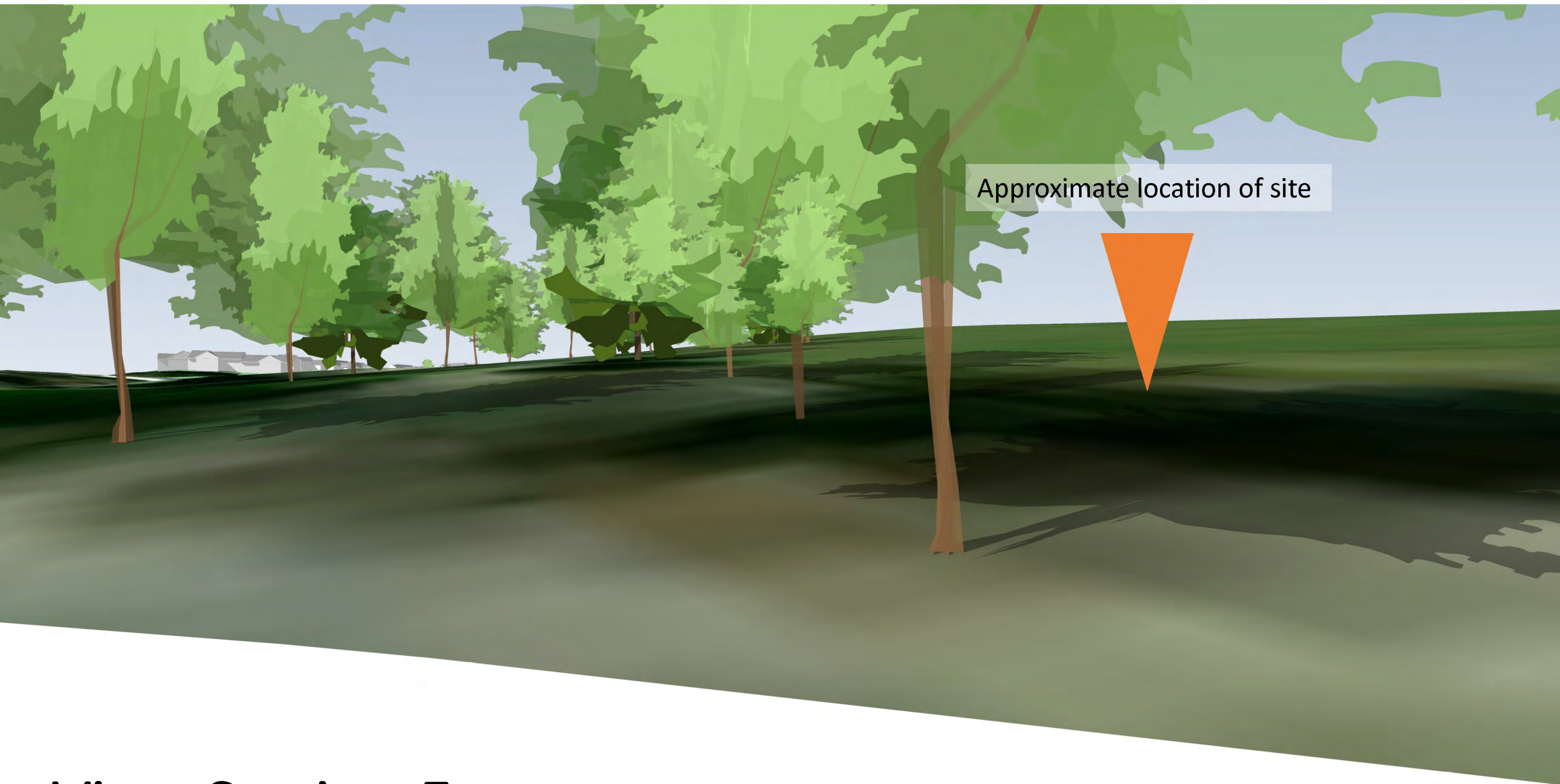
Approximate location of site

View Station 4

Approximate location of site



View Station 5



View Station 5



Arbor Acres

Site

Line of Sight

Line of Sight

Roosevelt St.

Taft St.

Aerial Perspective

© 2020 Google

Google Earth

View from Roosevelt St.

Approximate location of site



View from Roosevelt St.

Trees on

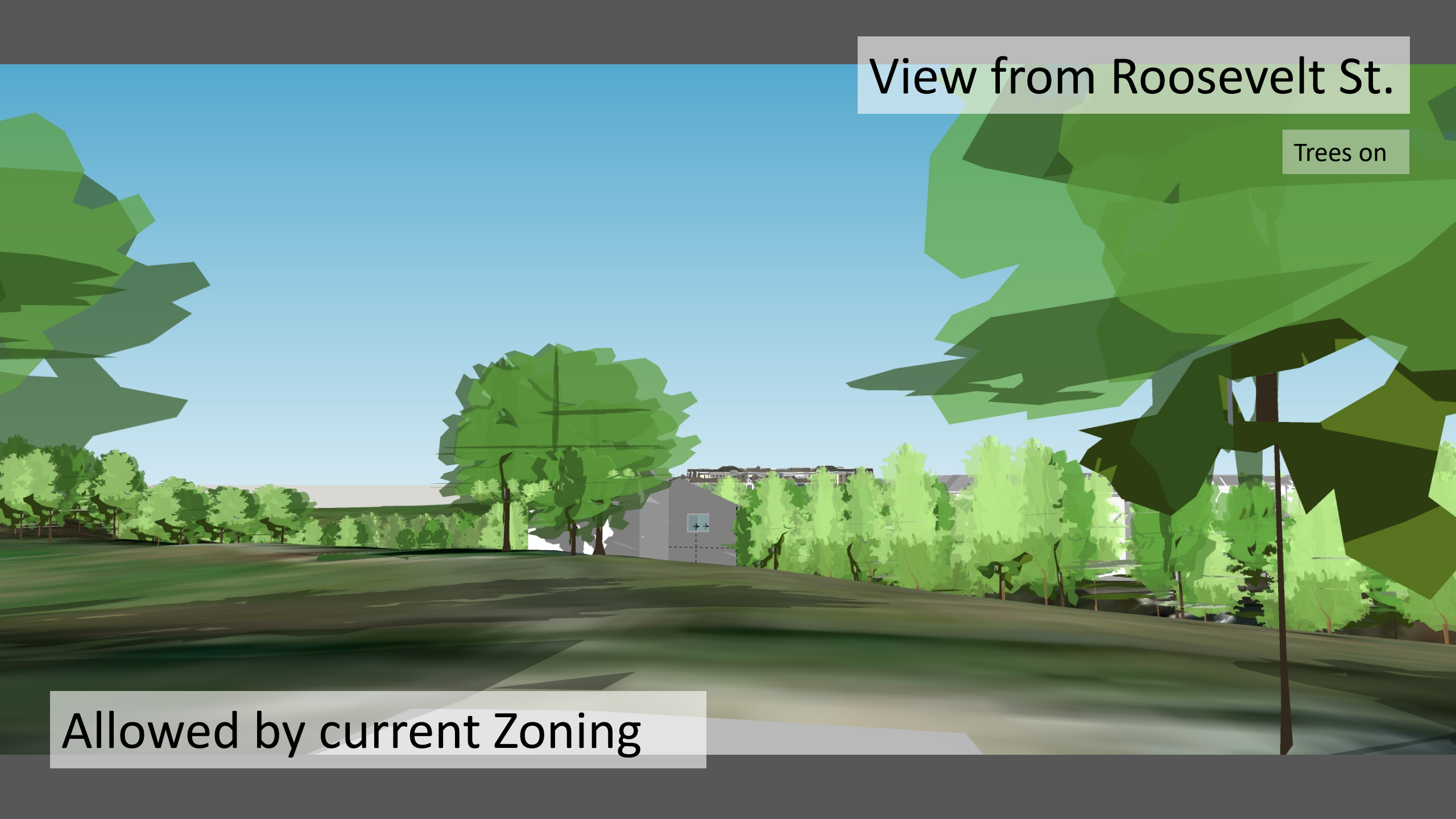
Proposed design.



View from Roosevelt St.

Trees on

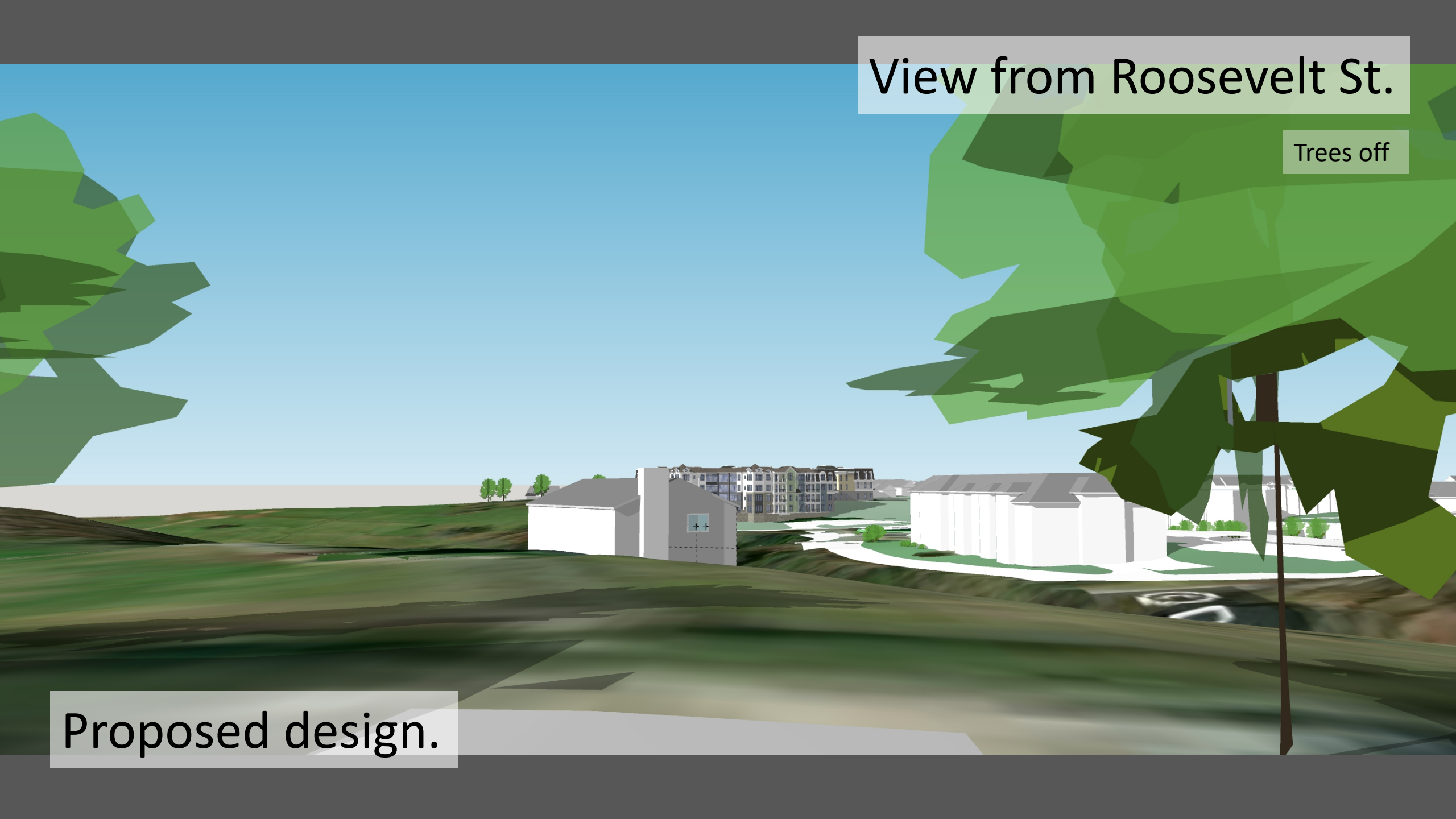
Allowed by current Zoning



View from Roosevelt St.

Trees off

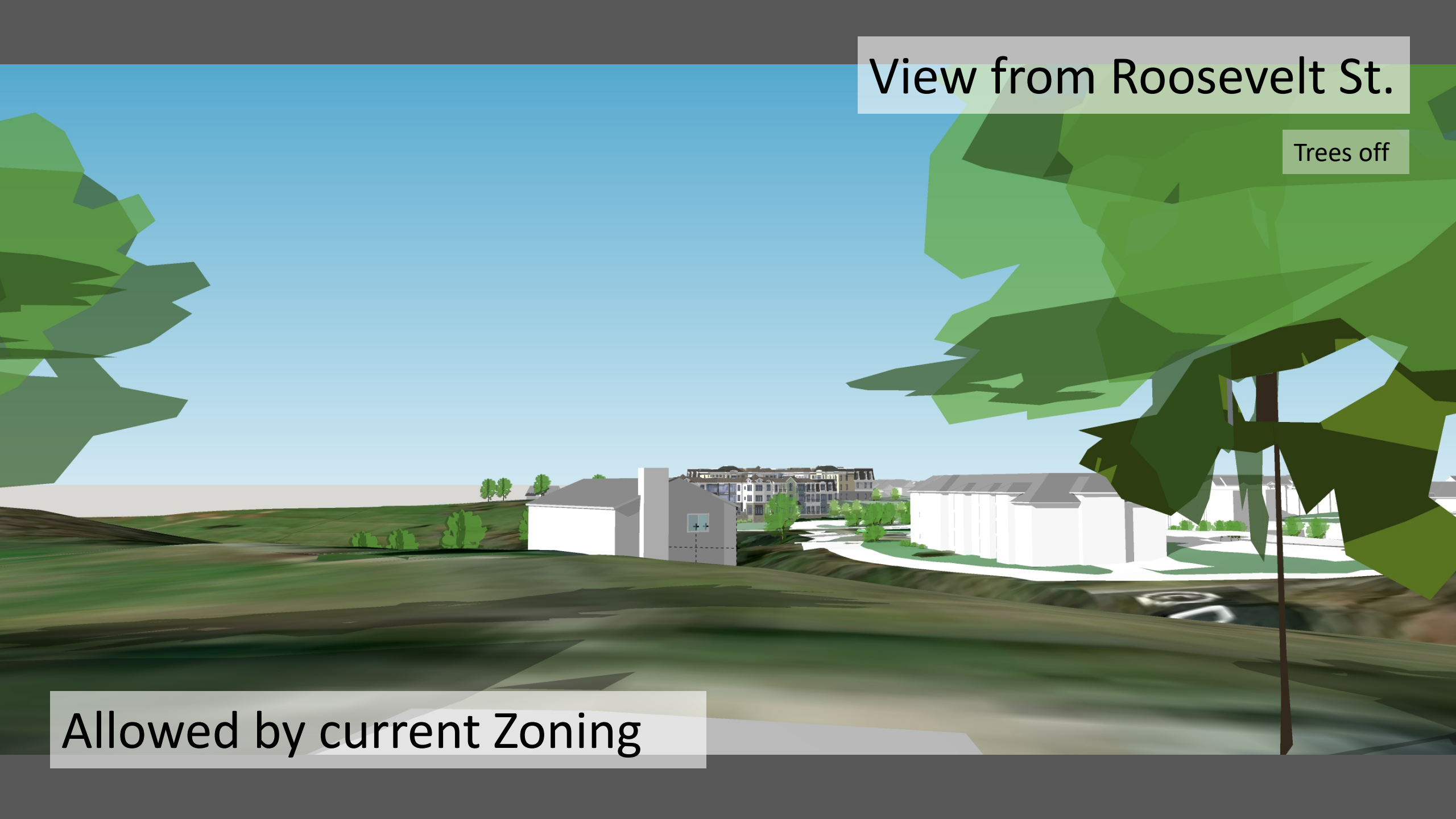
Proposed design.



View from Roosevelt St.

Trees off

Allowed by current Zoning



View from Taft St.

Approximate location of site




© 2020 Google

Google Earth

Imagery Date: 6/2014 36°06'55.74" N 80°15'45.24" W elev 1062 ft eye alt 945 ft


[Report a problem](#)

A 3D architectural rendering of a park area. The scene is viewed from a low angle, looking across a grassy field towards a line of trees and a building in the distance. The sky is a clear, light blue. The trees are rendered with a stylized, low-poly aesthetic, featuring large, flat green leaves and thin, brown trunks. The ground is a mix of green grass and dark brown shadows cast by the trees. In the background, a multi-story building with a dark facade is visible behind the trees. The overall lighting is bright and even, suggesting a clear day.

View from Taft St.

Trees on

Proposed design.



View from Taft St.

Trees on

Allowed by current Zoning

View from Taft St.

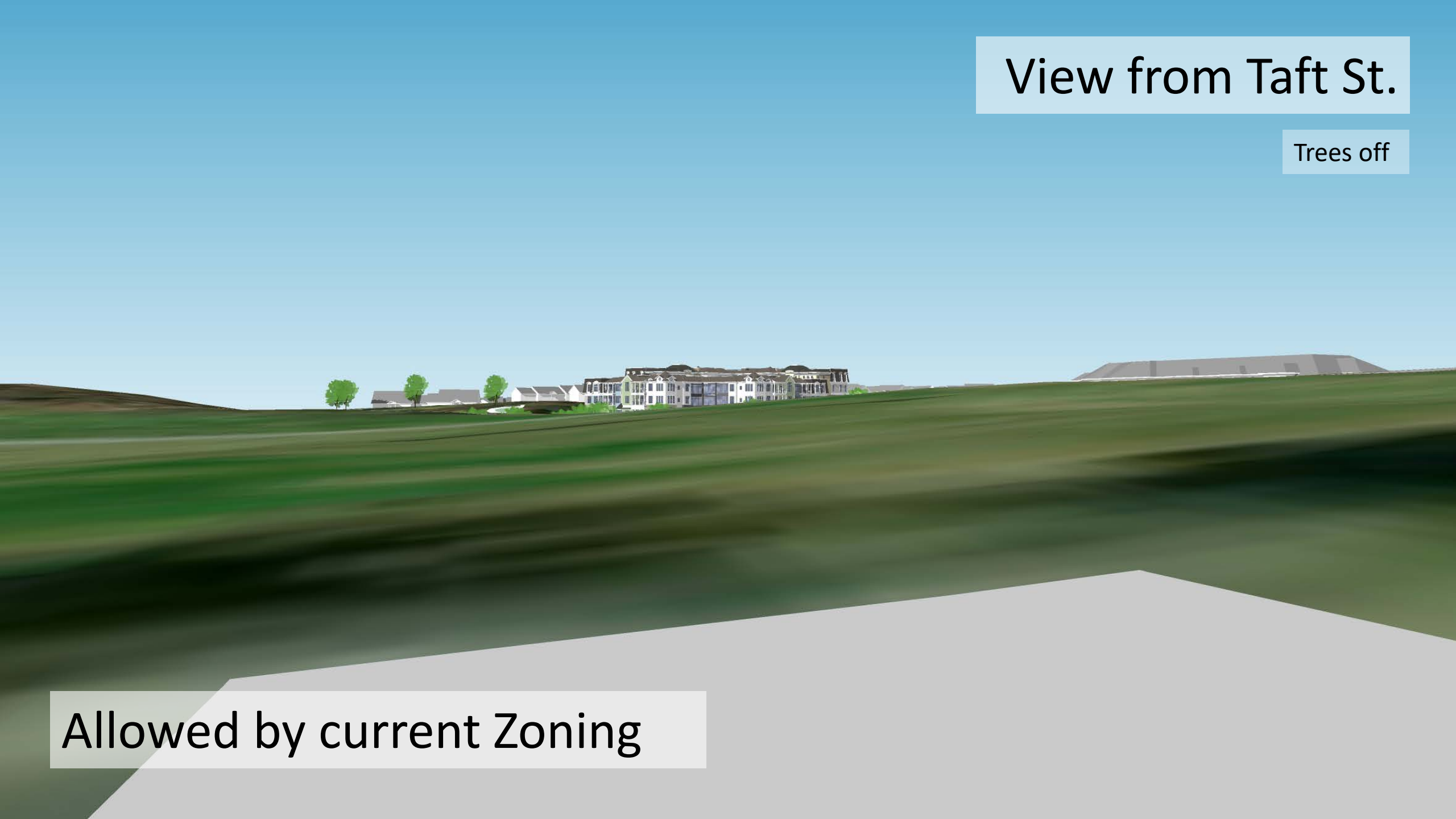
Trees off



Proposed design.

View from Taft St.

Trees off



Allowed by current Zoning