

**Site Data**

Zoning:	Existing: AG Proposed: LI
Jurisdiction:	Forsyth County, NC
Site Acreage:	70.59 Acres +/-
Total Building Size:	642,500 SF +/-
Parking Provided:	673 Spaces +/-
Docks Provided:	93 Docks +/-
Stormwater Management:	On-site or Common Shared Device

**Lot 1**

Lot Size:	15.91 Acres +/-
Building Size:	40,000 SF +/-
Parking Spaces:	68 spaces +/-
Docks:	10 Docks +/-

**Lot 2**

Lot Size:	20.51 Acres +/-
Building Size:	332,500 SF +/-
Parking Spaces:	289 spaces +/-
Docks:	40 Docks +/-

**Lot 4**

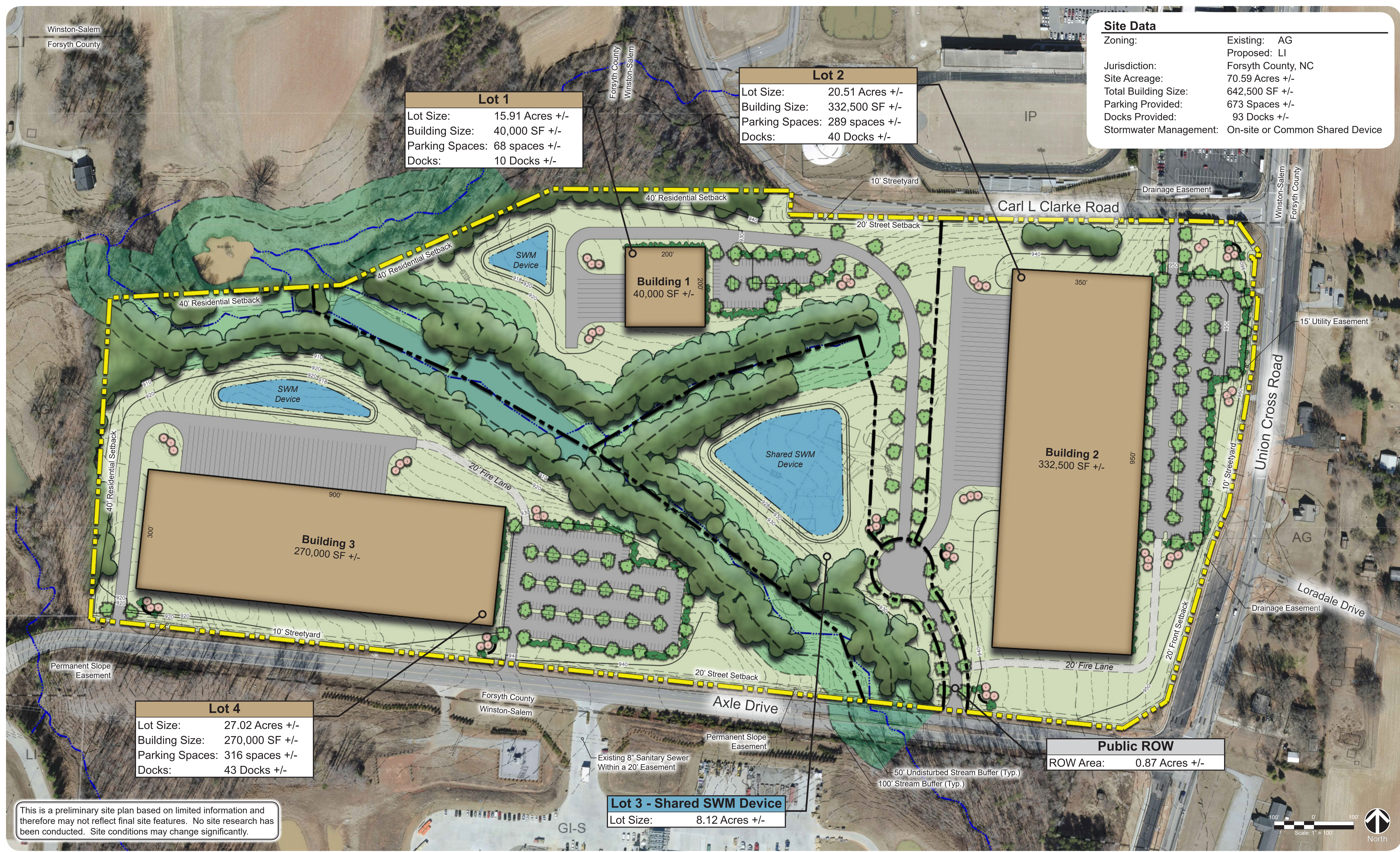
Lot Size:	27.02 Acres +/-
Building Size:	270,000 SF +/-
Parking Spaces:	316 spaces +/-
Docks:	43 Docks +/-

**Lot 3 - Shared SWM Device**

Lot Size:	8.12 Acres +/-
-----------	----------------

**Public ROW**

ROW Area:	0.87 Acres +/-
-----------	----------------



This is a preliminary site plan based on limited information and therefore may not reflect final site features. No site research has been conducted. Site conditions may change significantly.

