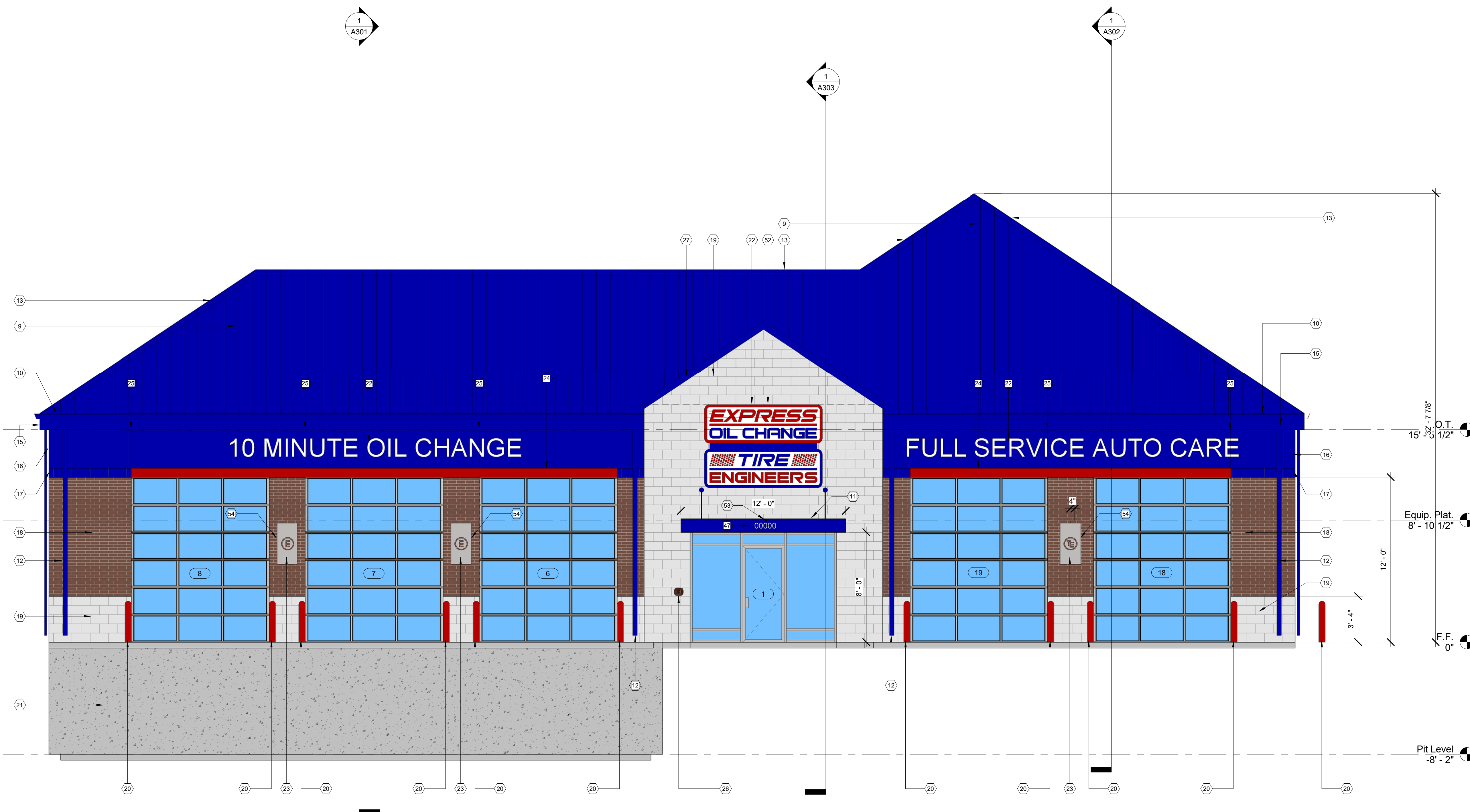


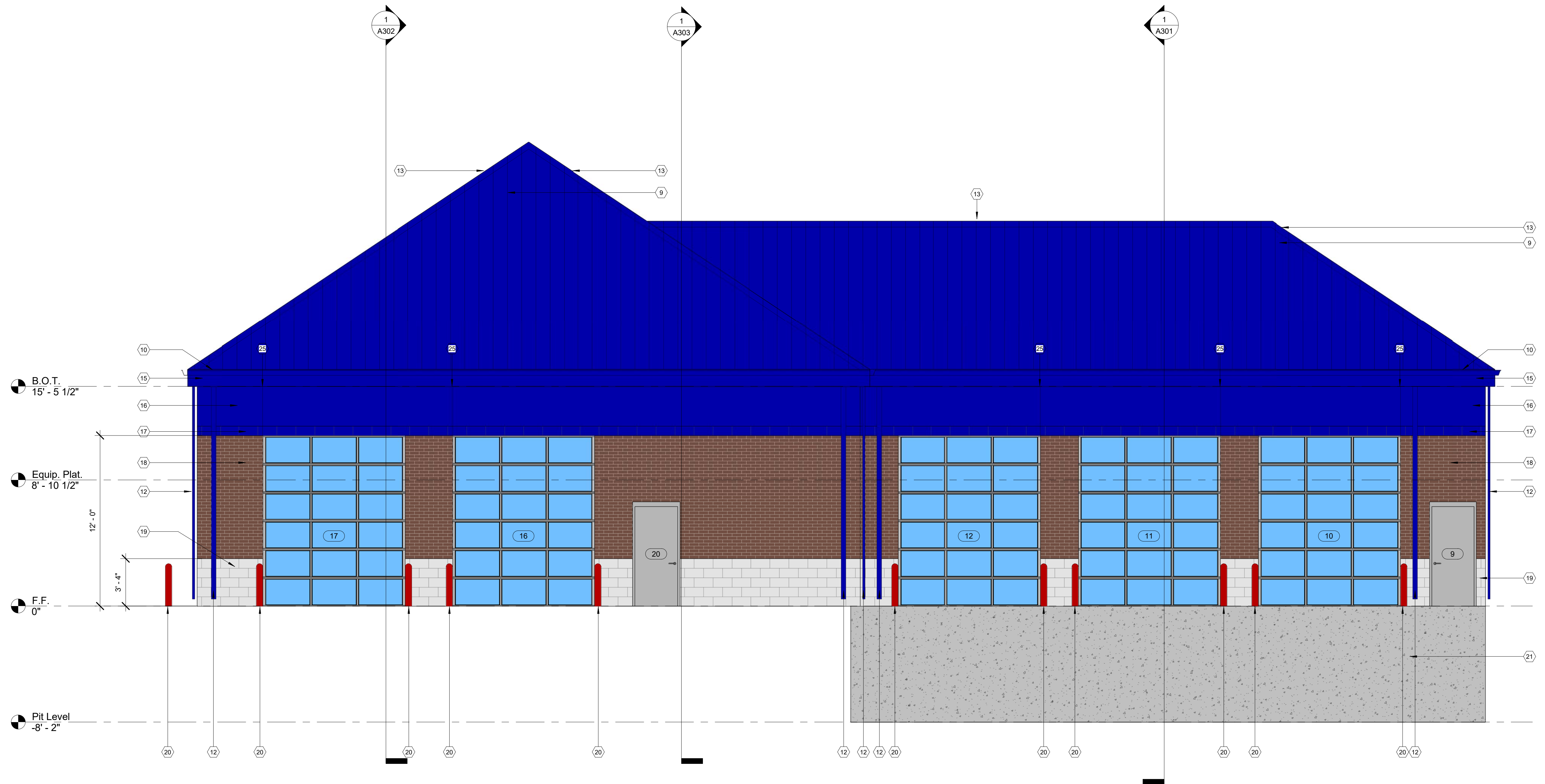
Note: Align top of exterior wall packs with bottom of banding at 12'-0" a.f.f. Top of emergency lighting at exit doors to be aligned with top of door frame. Do not locate exterior wall packs on side of building that contains illuminated lightbars or sconces by others.



1 Front Elevation
1/4" = 1'-0"

**Note: Building that is proposed, and shown on submitted plan is "Flipped" from the elevations shown above. The submitted plan shows the two (2) full service doors left of the main entry, and the three (3) 10 minute oil change doors on the right.*

Note: Align top of exterior wall packs with bottom of banding at 12'-0" a.f.f. Top of emergency lighting at exit doors to be aligned with top of door frame. Do not locate exterior wall packs on side of building that contains illuminated lightbars or sconces by others.

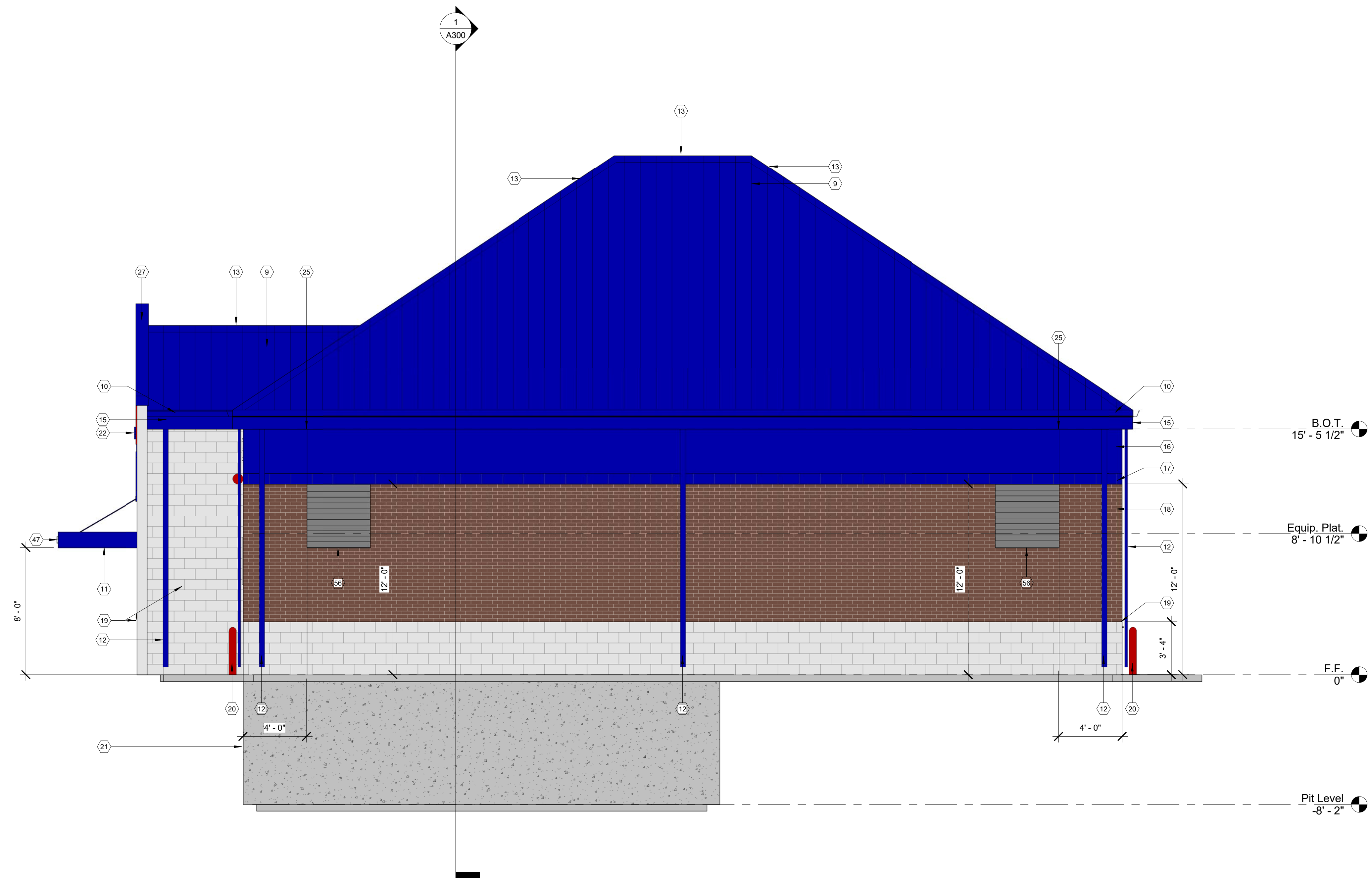


1 Rear Elevation
1/4" = 1'-0"

**Note: Building that is proposed, and shown on submitted plan is "Flipped" from the elevations shown above. The submitted plan shows the two (2) full service doors left of the main entry, and the three (3) 10 minute oil change doors on the right.*

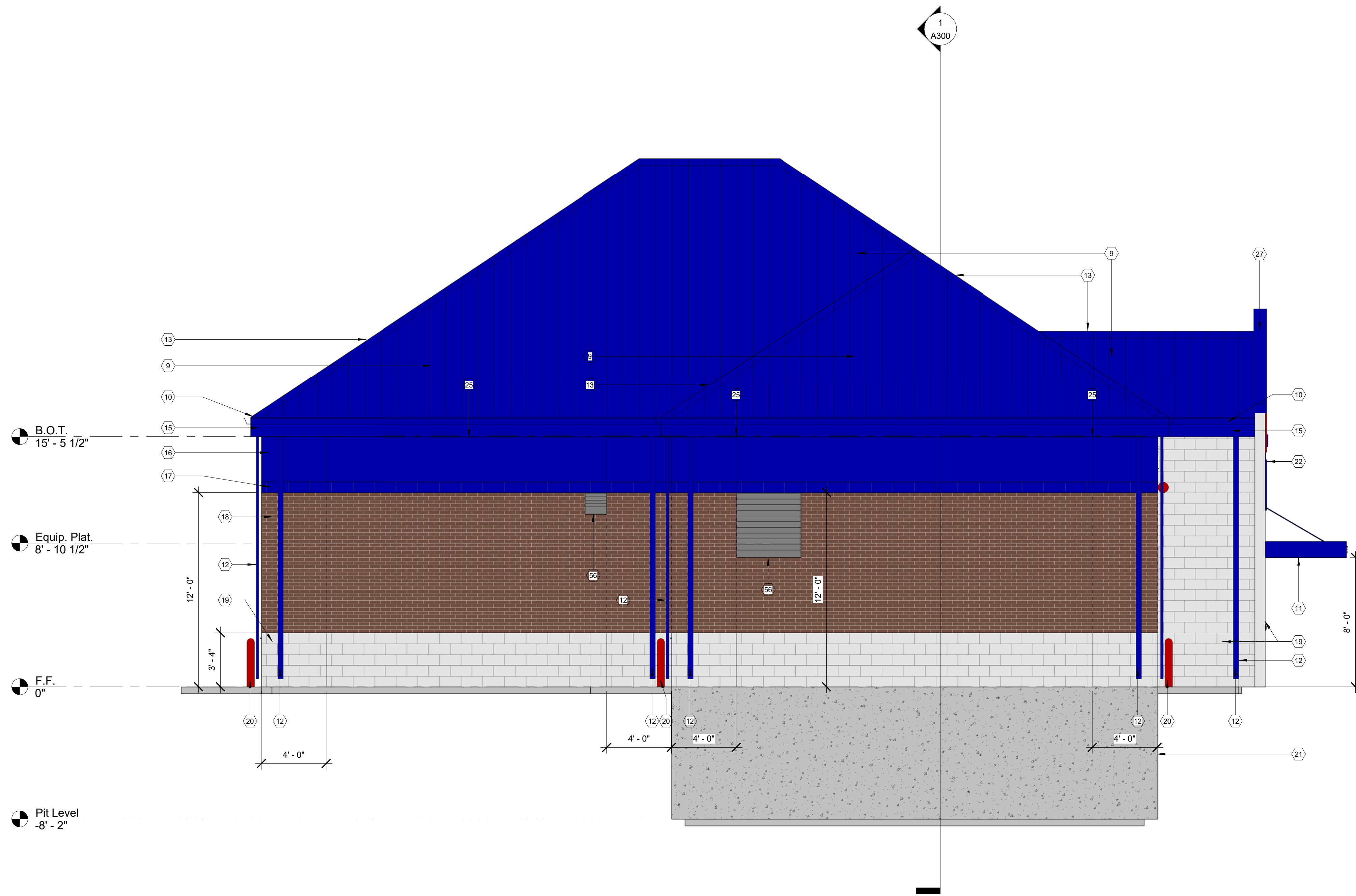
The rear elevation would show three (3) oil change doors on the left, and two (2) full service doors on the right.

Note: Align top of exterior wall packs with bottom of banding at 12'-0" a.f.f. Top of emergency lighting at exit doors to be aligned with top of door frame. Do not locate exterior wall packs on side of building that contains illuminated lightbars or sconces by others.



1 Right Elevation
1/4" = 1'-0"

Note: Align top of exterior wall packs with bottom of banding at 12'-0" a.f.f. Top of emergency lighting at exit doors to be aligned with top of door frame. Do not locate exterior wall packs on side of building that contains illuminated lightbars or sconces by others.



① Left Elevation
1/4" = 1'-0"