



7/15/2023



610 SERIES (W/RECESSED GARAGE)

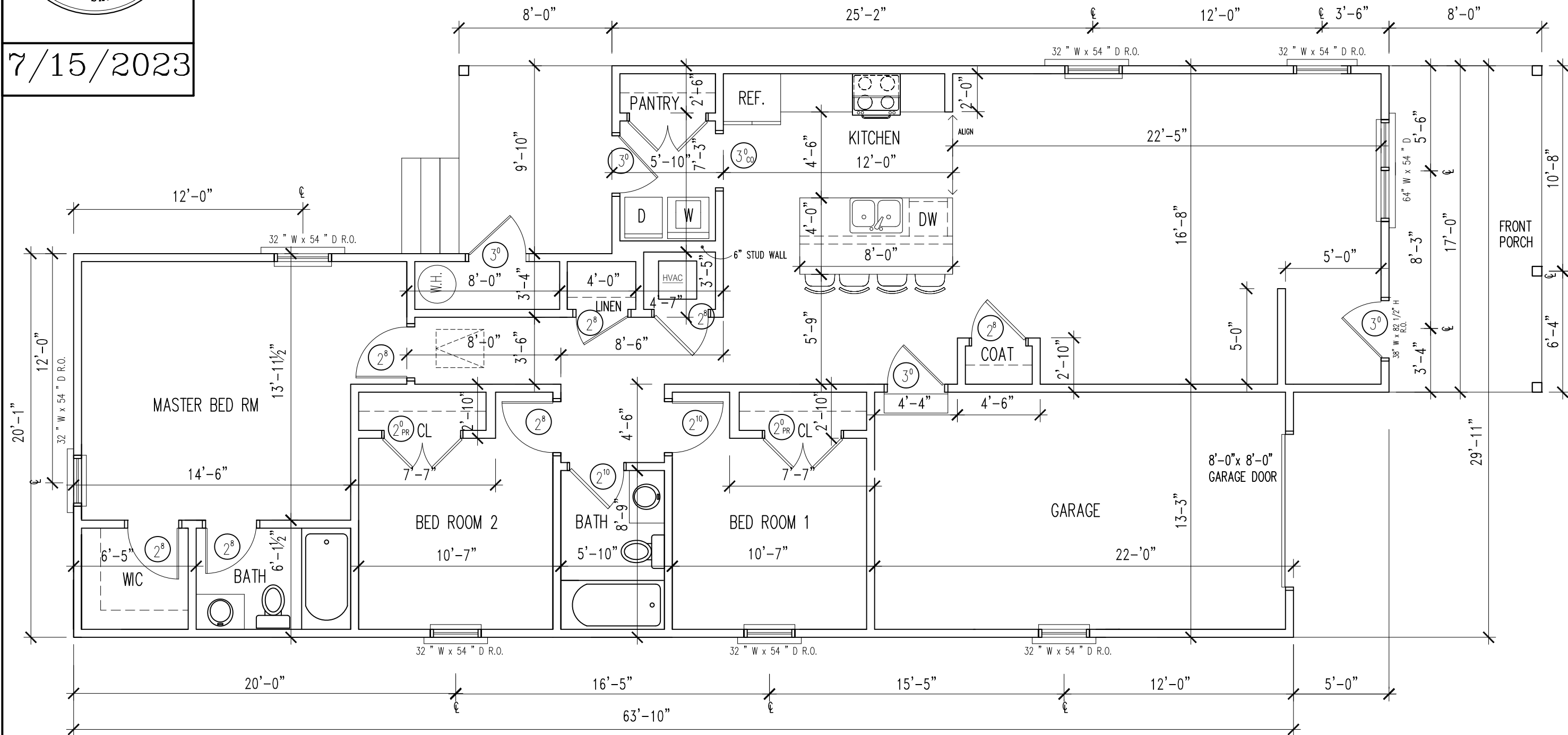
610 SERIES
WITH RECESSED GARAGE



habitat
FOR SYTH COUNTY



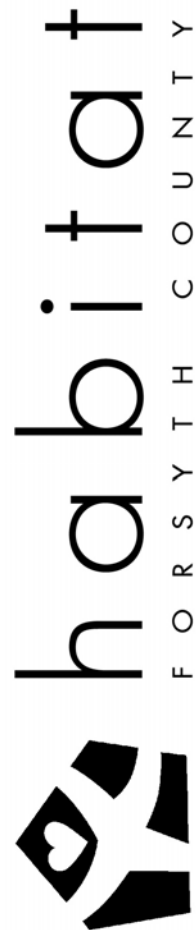
7/15/2023



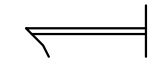
FLOOR PLAN

(1355 H.S.F.)

3/16"=1'-0"



610 SERIES
WITH RECESSED GARAGE
FLOOR PLAN

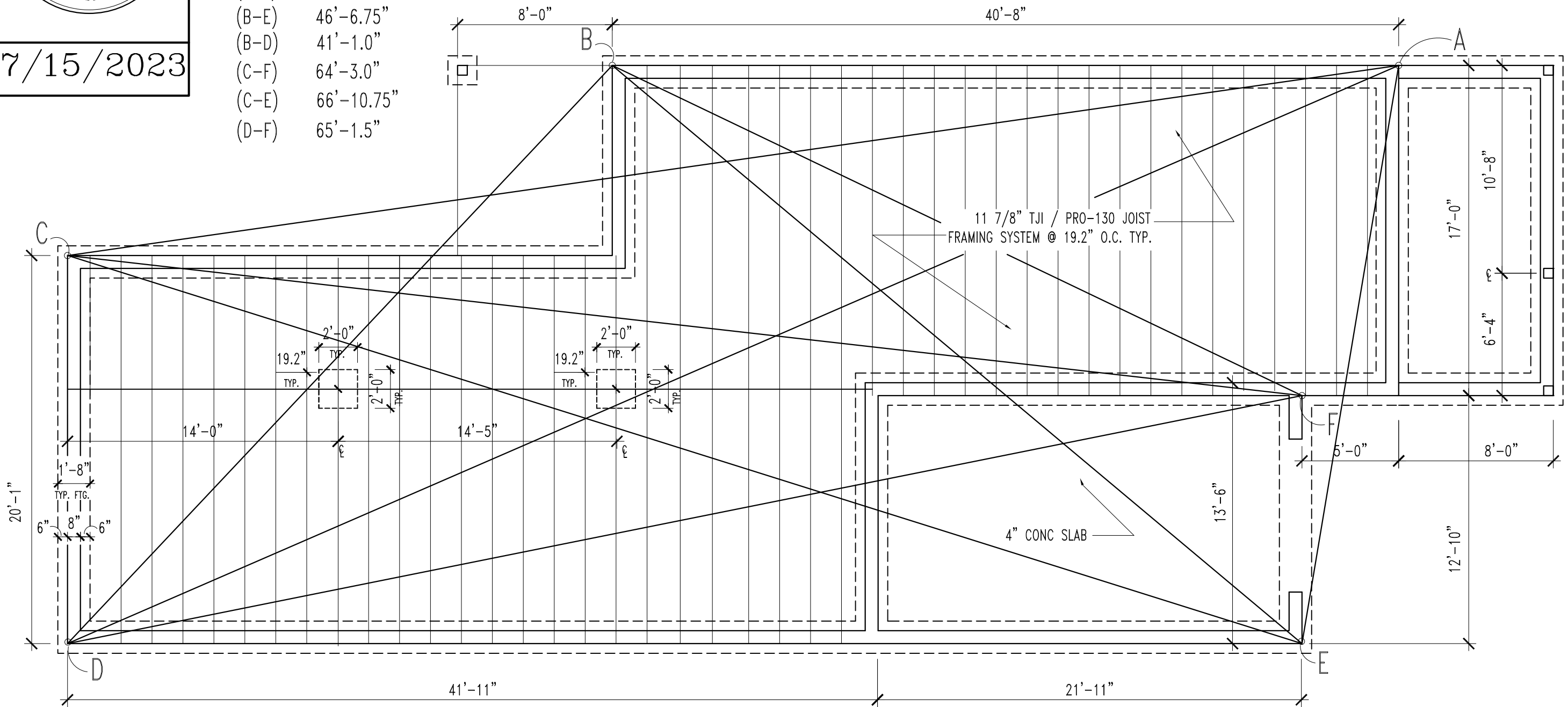




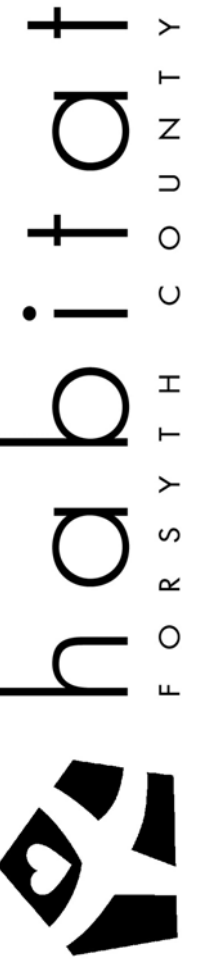
7/15/2023

DIAGONAL DIMENSIONS:

- (A-C) 69'-6.25"
- (A-D) 75'-0.75"
- (A-E) 30'-4.0"
- (B-F) 39'-6.5"
- (B-E) 46'-6.75"
- (B-D) 41'-1.0"
- (C-F) 64'-3.0"
- (C-E) 66'-10.75"
- (D-F) 65'-1.5"



2

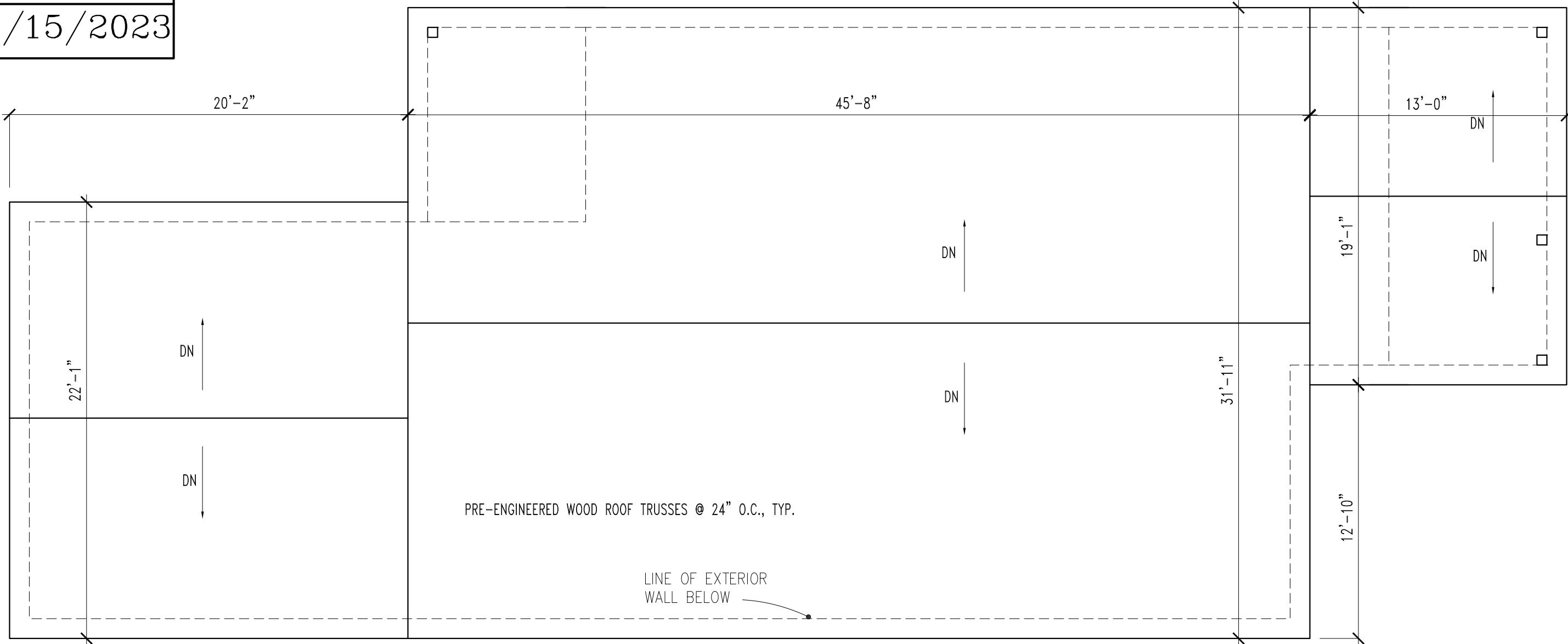


610 SERIES
WITH RECESSED GARAGE
FOUNDATION PLAN



GENERAL NOTES:
ALL SOFFIT OVERHANGS ARE 1'-0"

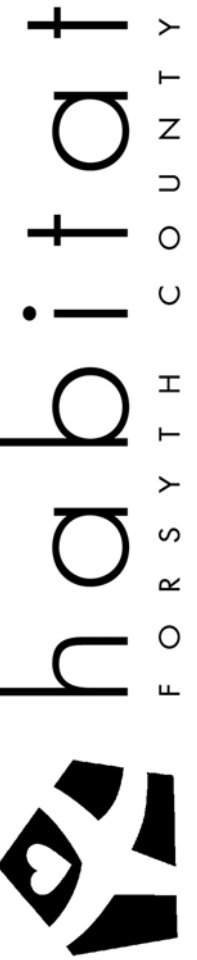
7/15/2023



ROOF PLAN

3/16"=1'-0"

3



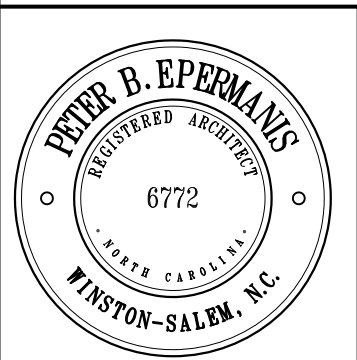
610 SERIES
WITH RECESSED GARAGE
ROOF PLAN



FRONT ELEVATION



REAR ELEVATION



7/15/2023

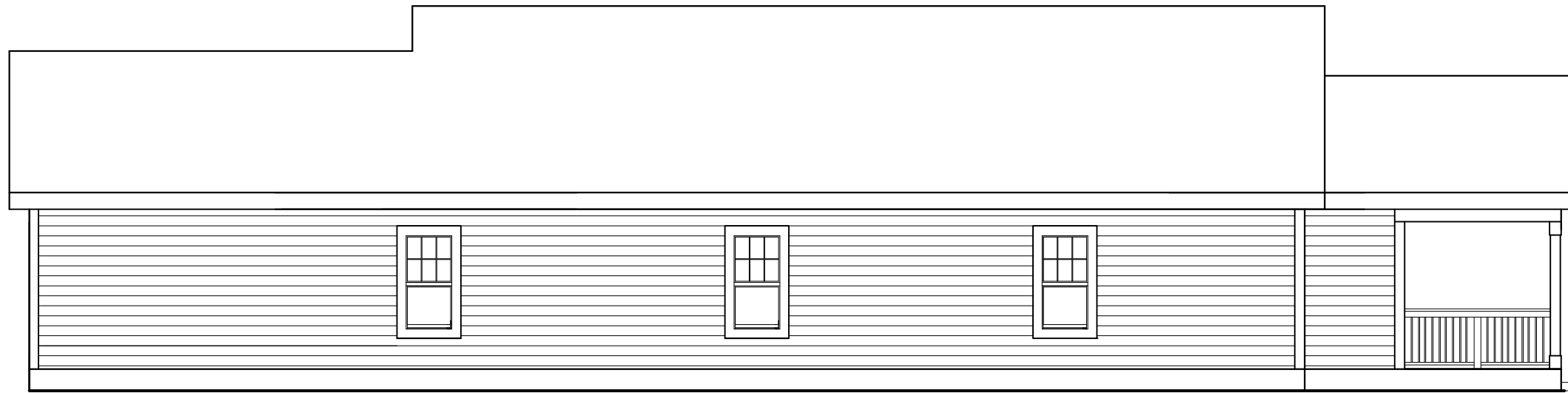
610 SERIES W/ RECESSED GARAGE – ELEVATIONS



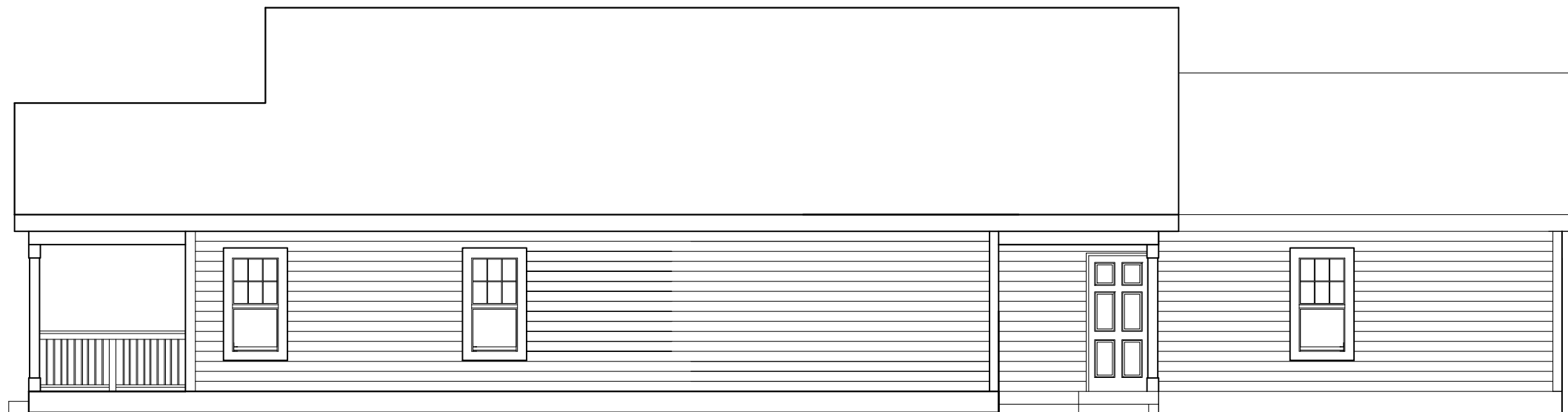
habitat
FOR S Y T H C O U N T Y

4A

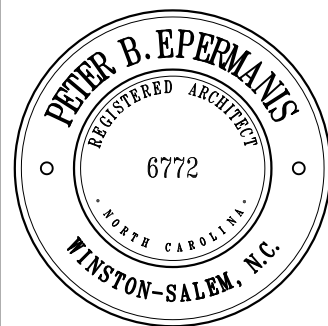
610 SERIES
WITH RECESSED GARAGE
ELEVATIONS



GARAGE SIDE ELEVATION



FAMILY ROOM SIDE ELEVATION



7/15/2023

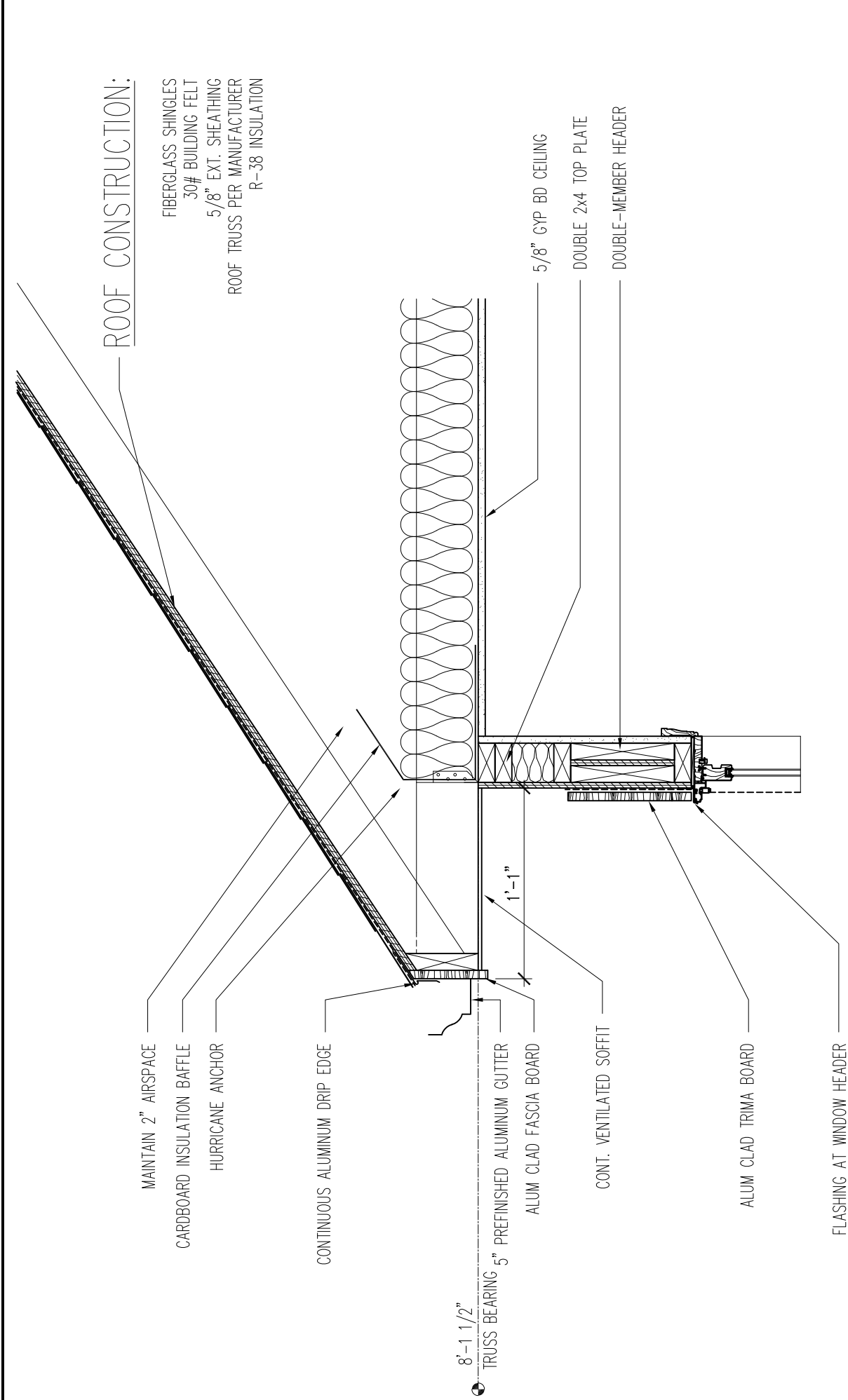
610 SERIES W/ RECESSED GARAGE – ELEVATIONS

4B

habitat
FOR S Y T H C O U N T Y

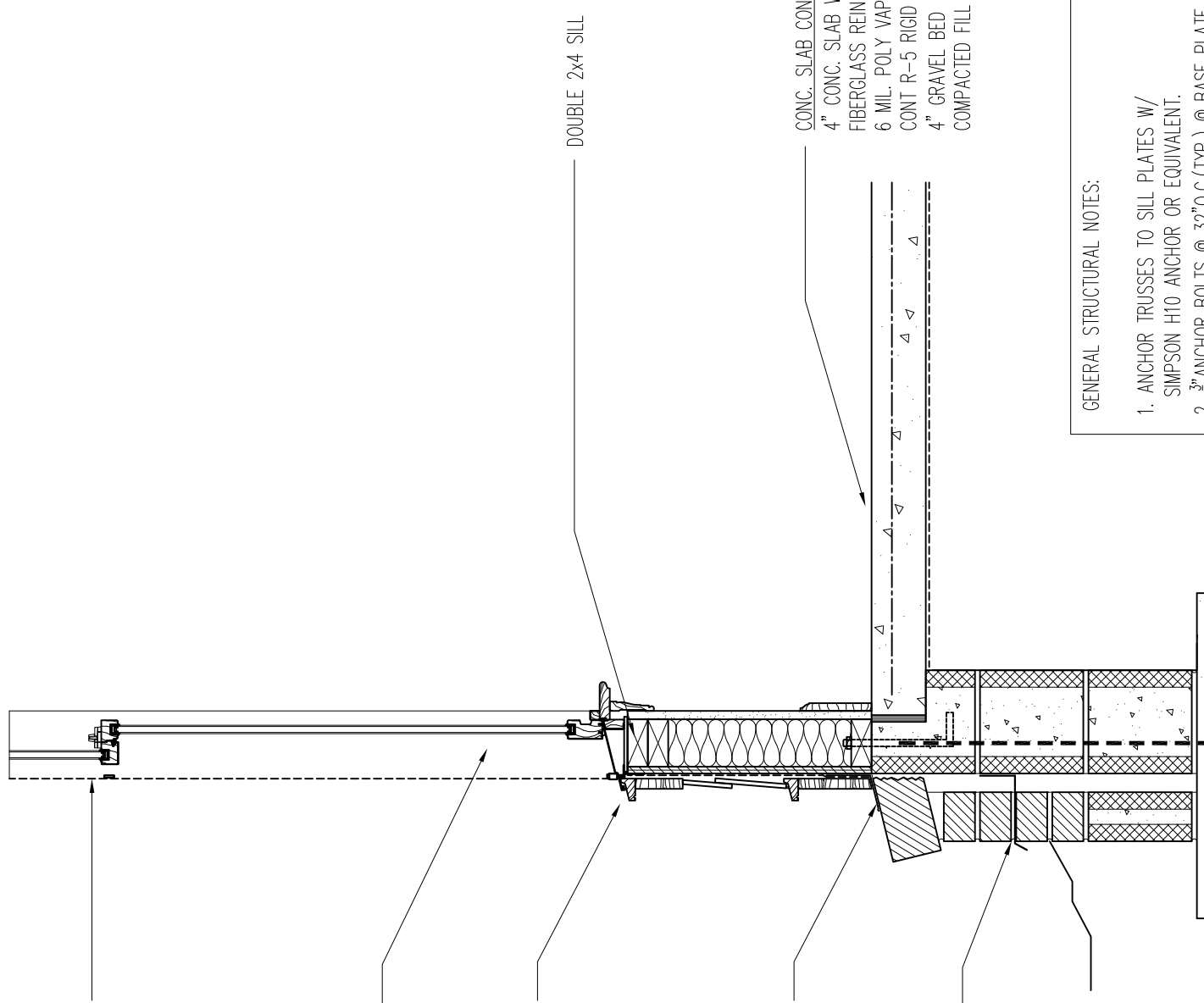


610 SERIES
WITH RECESSED GARAGE
ELEVATIONS



WALL CONSTRUCTION:

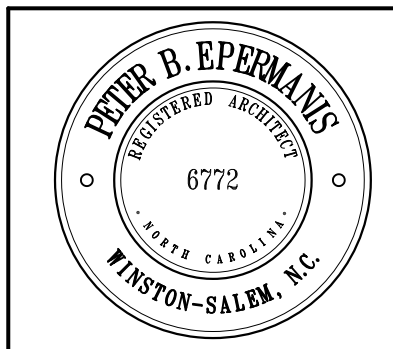
- PREFIN. SIDING
- BUILDING WRAP
- 1/2" EXT. SHEATHING
- 2x4 WD. FRAMING
- R-19 BATT INSULATION
- 5/8" GYPSUM WALL BOARD



- CONC. SLAB CONSTRUCTION:**
- 4" CONC. SLAB W/ FIBERGLASS REINF. IN CONC. MIX
 - 6 MIL. POLY VAPOR BARRIER
 - CONT R-5 RIGID INSULATION
 - 4" GRAVEL BED
 - COMPACTED FILL

GENERAL STRUCTURAL NOTES:

1. ANCHOR TRUSSES TO SILL PLATES W/ SIMPSON H10 ANCHOR OR EQUIVALENT.
2. 3/4" ANCHOR BOLTS @ 32" O.C. (TYP.) @ BASE PLATE TO FOUNDATION.



7/15/2023

TYPICAL WALL SECTION