

Overview

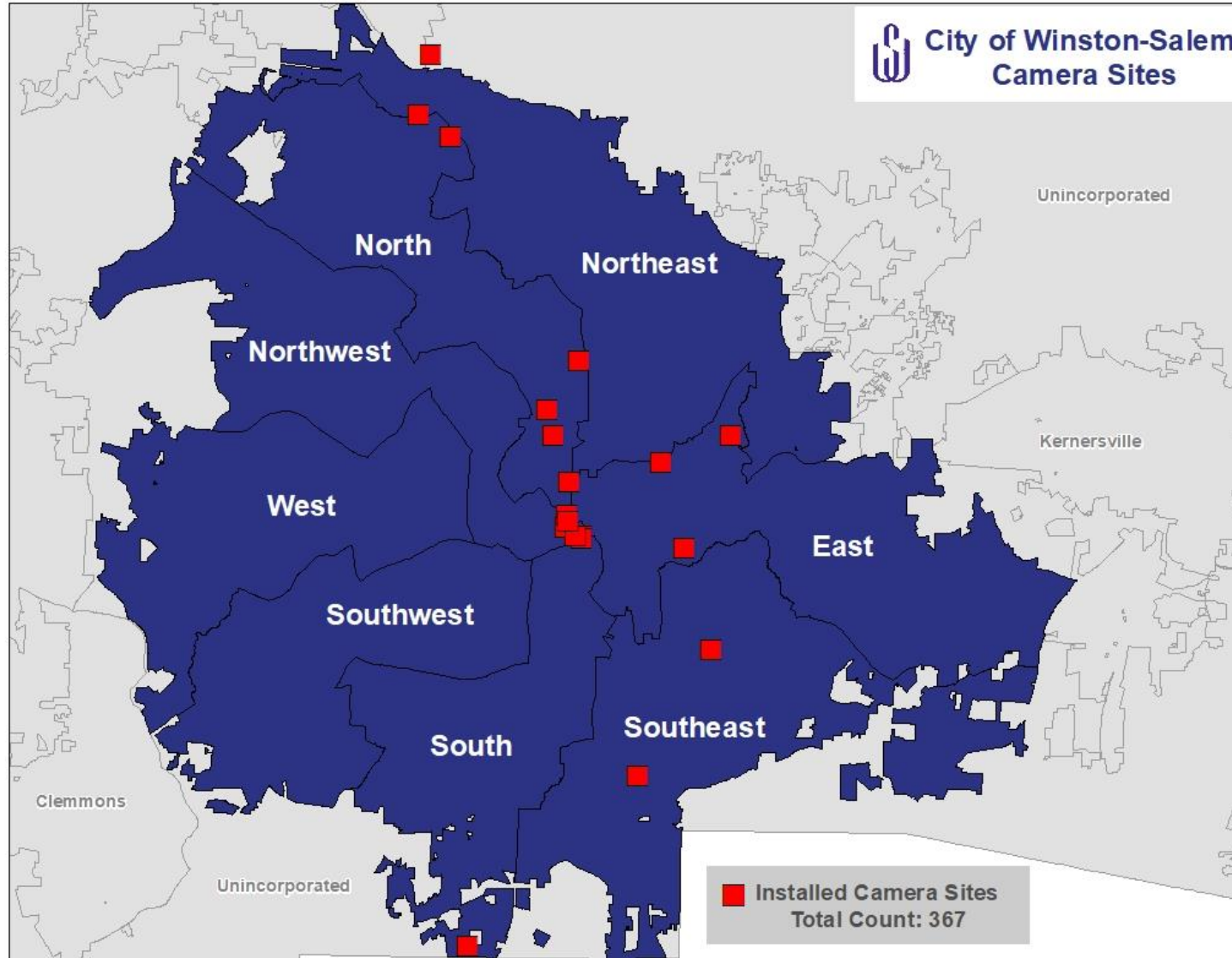
City of Winston-Salem Security Cameras

- Existing Environment
- Potential Expansion

Existing Security Camera Count 367

Location	Camera Count
Bryce A Stuart Building	34
City Hall Building	32
Lowery Street Facility	29
W-SPD Waughtown District	13
Winston Lake Golf Course	11
Benton Convention	37
Cherry St Prkg Deck	14
Fairgrounds	31
WSTA, Shop, and Admin	71
Winston Square Park	5
Corpening Plaza	4
Landfills	34
Hanes Mill Landfill	15
Hanes Mill Annex	3
Forum 52	6
Overdale	6
Old Salisbury Rd.	4
Recreation/Community Centers	52
Hanes Hosery	16
14th St Rec Center	18
MLK Rec Center	18

Security Camera Locations

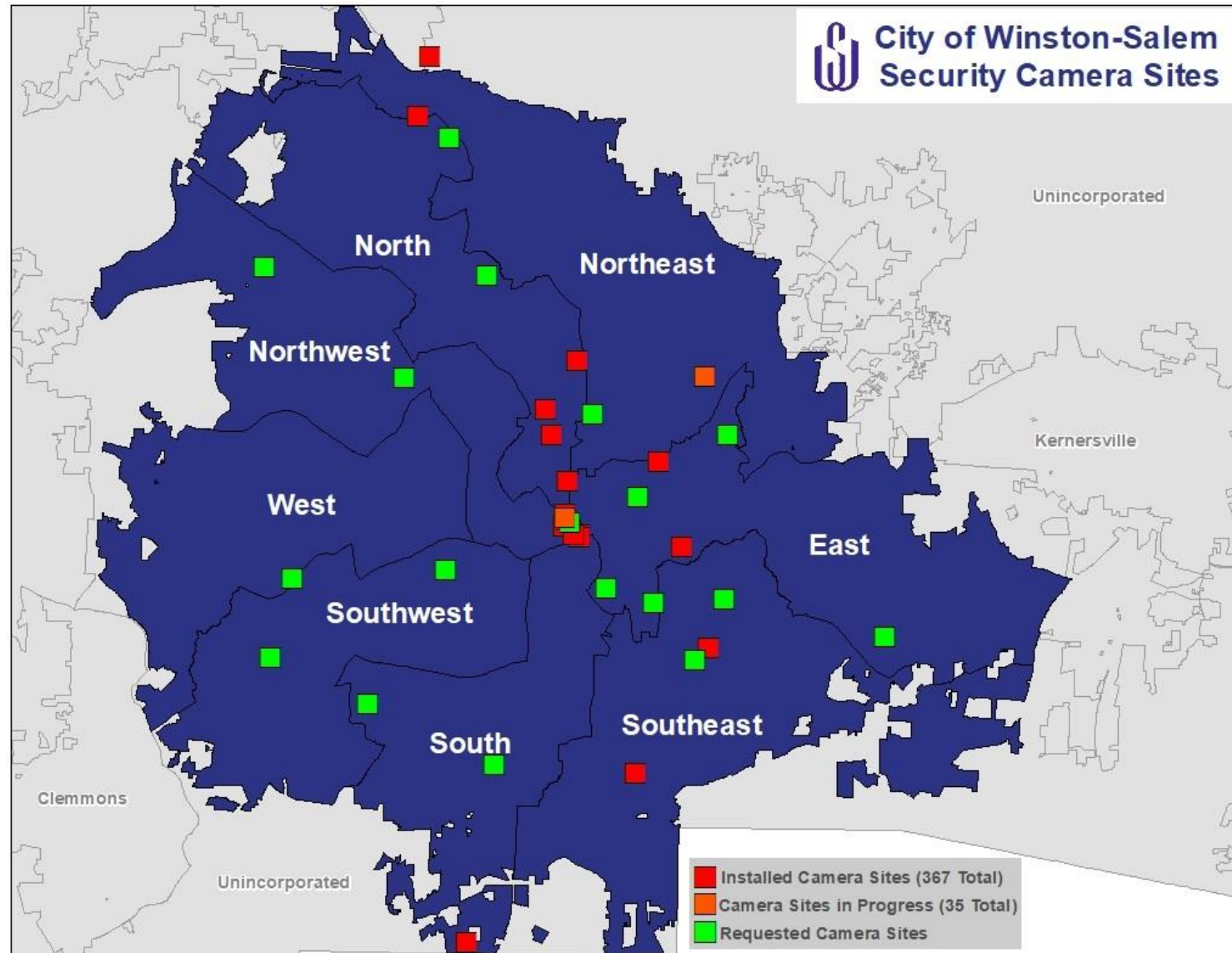


Additional Security Camera Site Requests

Total Estimated Cost: \$600,000

Additional Security Camera Site Requests	Cost (Estimated)	Expected Funding Source
Recreation/Community Centers	\$420,000	Bonds
Little Creek	\$35,000 per site times 12 Sites = \$420,000	Bonds
Rupert Bell		Bonds
Sprague Street		Bonds
WC Sims		Bonds
Sedge Garden		Bonds
Brown and Douglas		Bonds
Miller Park		Bonds
Georgia Taylor		Bonds
Old Town		Bonds
Winston Lake Golf Course		Bonds
South Fork		Bonds
Polo Park		Bonds
Fairgrounds - Additional cameras	\$15,000	Operating
Fire Station 13	\$50,000	Bonds
Hanes Mill Landfill - Additional cameras	\$25,000	Operating
Meter Shop	\$20,000	Operating
Merschel Park	\$35,000	Bonds
Quarry Park	\$35,000	Bonds

Installed Plus Additional Requested Sites



Security Cameras - City Network Connectivity

- There are three methods of connecting the security cameras to the City network; Direct connection, cellular connection, or wireless radio signal connection. The method used for connectivity is determined by several factors, the primary factor being the proximity to existing City fiber optic cabling.
- All security cameras are integrated with the WSPD Real-Time Crime Center.
- All security camera sites are directly connected to the City network with the following two exceptions:
 - Winston Square Park - Cellular connection (Verizon)
 - Corpening Plaza - Wireless radio signal (Fluidmesh)

Fluidmesh Wireless at Corpening Plaza





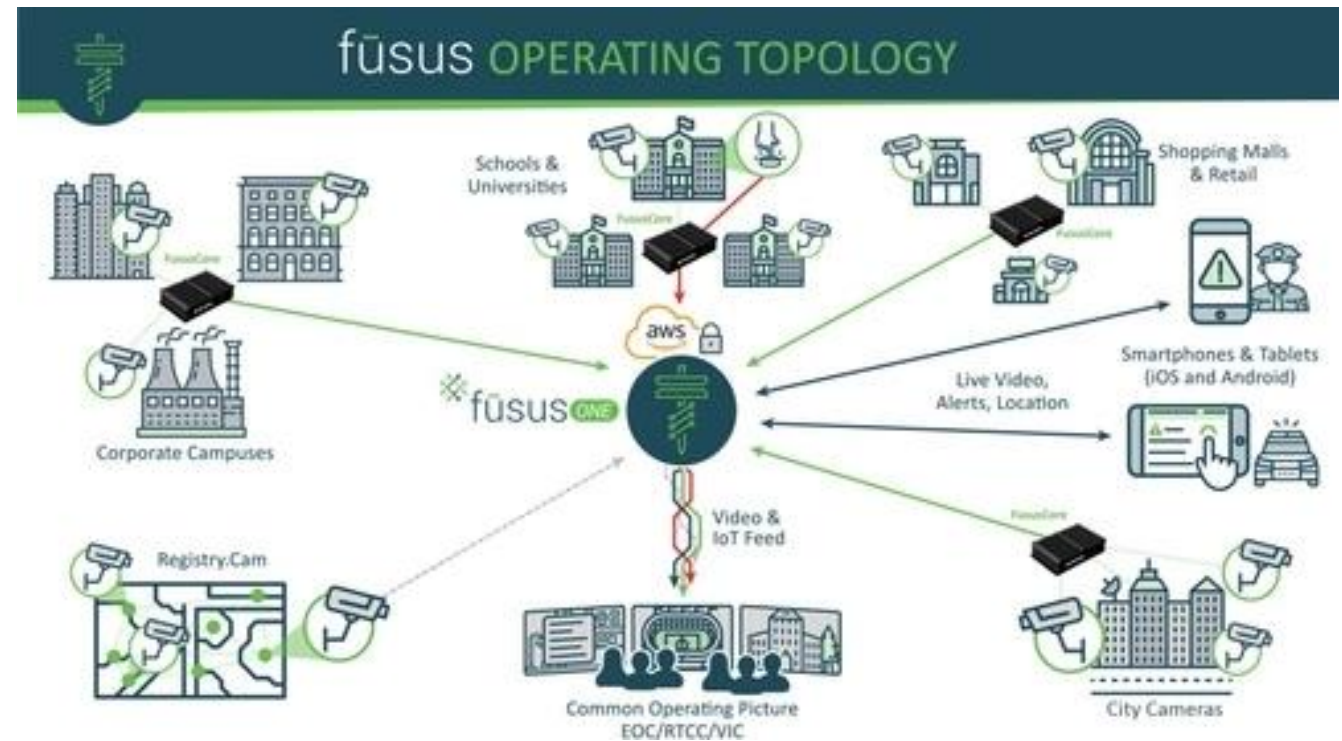
WINSTON-SALEM POLICE DEPARTMENT

REAL-TIME CRIME CENTER

Unified Public-Private Platform



- Improve Security
- Enhance Situational Awareness
- Effectively Manage Resources
- Break Down Silos



FUSUS UNIFIES ALL INTELLIGENCE & PUBLIC SAFETY ASSETS.



Aircraft & Drone



Covert



Private Camera Feeds



Robot



City & Transit



Bodycam



Vehicle

Real-Time Video Sources

Community Engagement & Evidence Collection



Multi-Media Public Tips



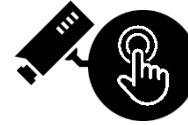
Emergency Mass Notification



Digital Evidence Vault with RMS Integration



Camera Registry



Panic Alerts



ALPR Integration



Indoor & Outdoor Gunfire Detectors



AI Weapons Detection



AI Sentry Search



Motion & Access Control

IoT Triggers & Sensors

Operational Utilities & Communications



Intelligence/Operations Center



911/CAD



Unified Map of All Assets, Feeds & Personnel



Secure Chat Floorplans Telestration



Live Remote Viewing: Smart Phones/Tablets/MDTs



First Responders & Tactical Response Teams: Live Video Feeds & Geolocation