



# WSTA Bus Service Amenity Standards

October 2023

- Classifying Bus Stops Into Tiers
- Amenities Standards for Data-Driven Decision making

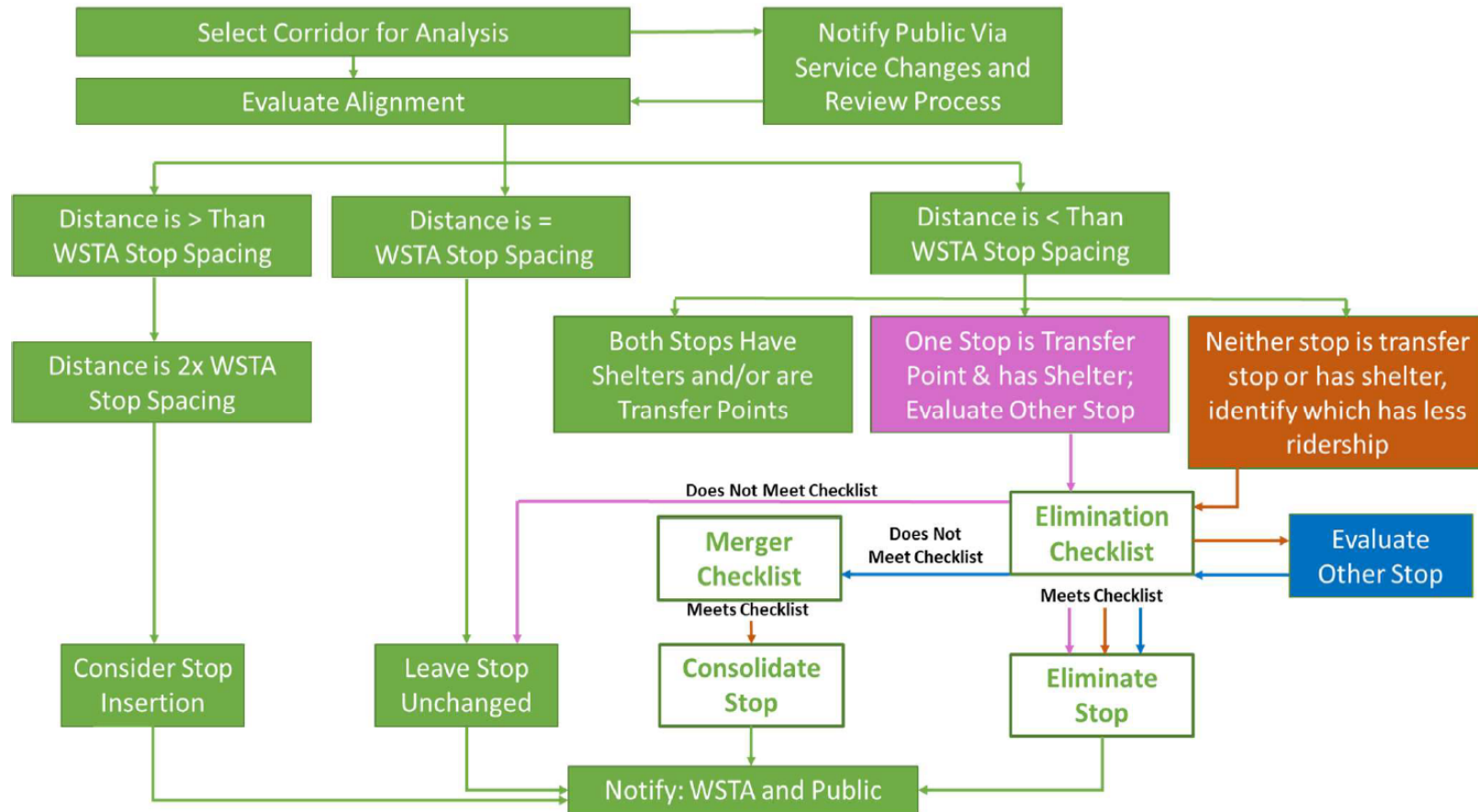
# Classifying Bus Stops Into Tiers

- Creating Tiers of Stops to prioritize investment in shelters, benches and other amenities

	Base Level	Level 1	Level 2	Level 3
<b>Qualification Criteria</b>				
<b>Daily Boardings</b>	None	10 - 19	20 - 39	40+

Amenity	Base	Level 1	Level 2	Level 3
<b>Key Feature</b>	<b>Sign</b>	<b>Seating</b>	<b>Shelter</b>	<b>Enhanced Shelter</b>
Bus stop sign	•	•	•	•
Pad	•	•	•	•
Information display		•	•	•
Shade		•	•	•
Trash bin		•	•	•
Lighting		•	•	•
Seating		•	•	•
Standard bus shelter			•	•
Landscaping/planting			•	•
Safety bollards			•	•
Bike rack			•	•
Larger shelter, or other specialized features				•
Emergency call button				•

# Amenities Standards Development





# Questions

---

---