



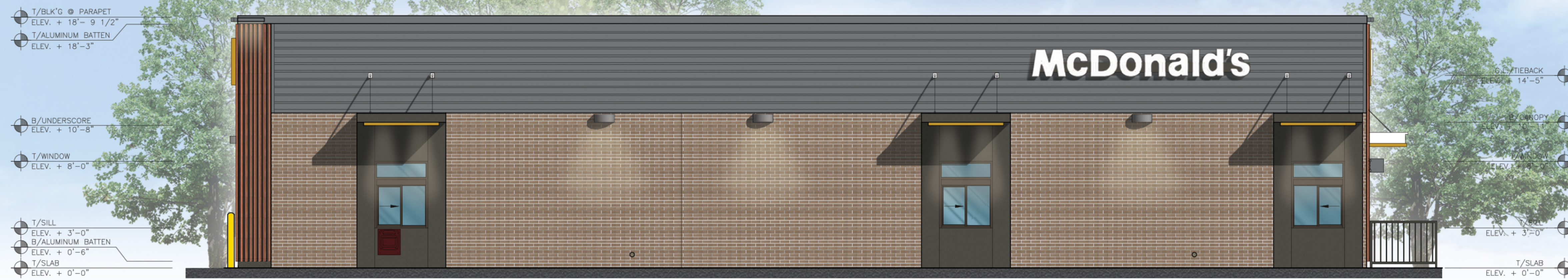
Front Elevation



Rear Elevation

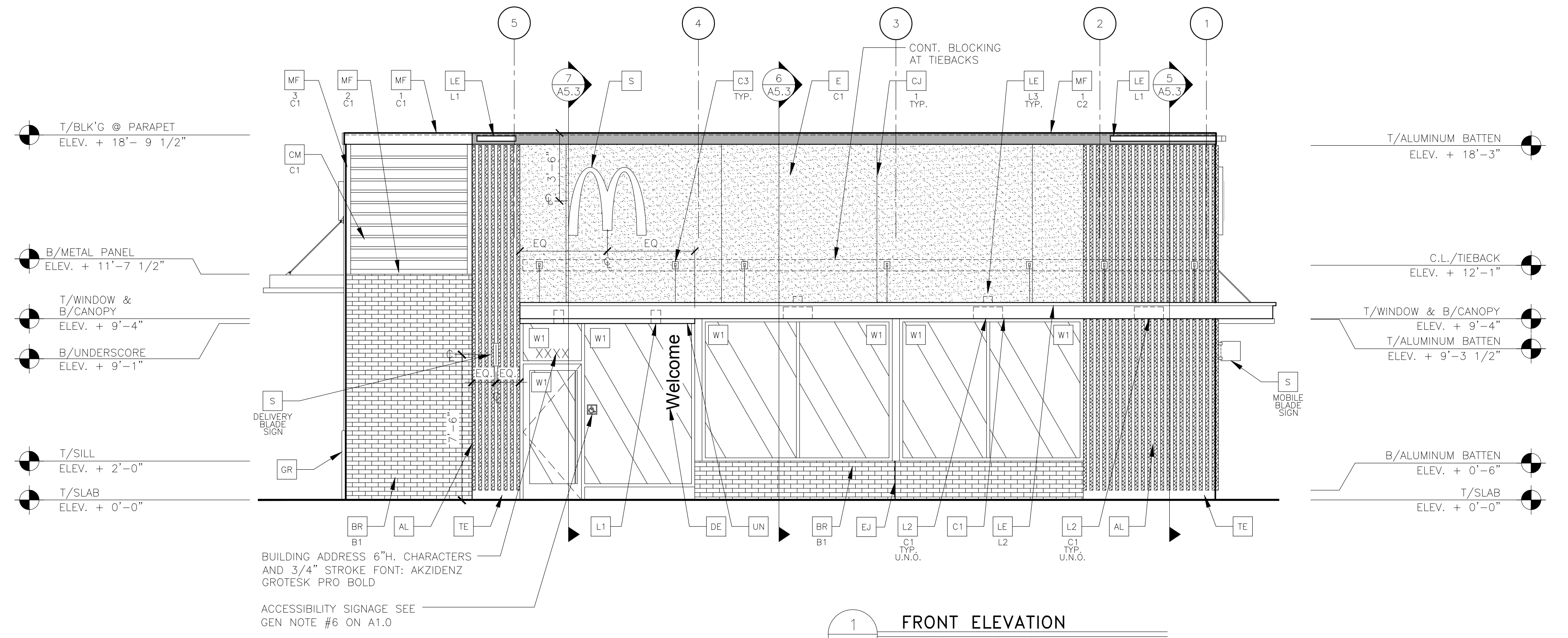


Non-Drive-Thru Side Elevation

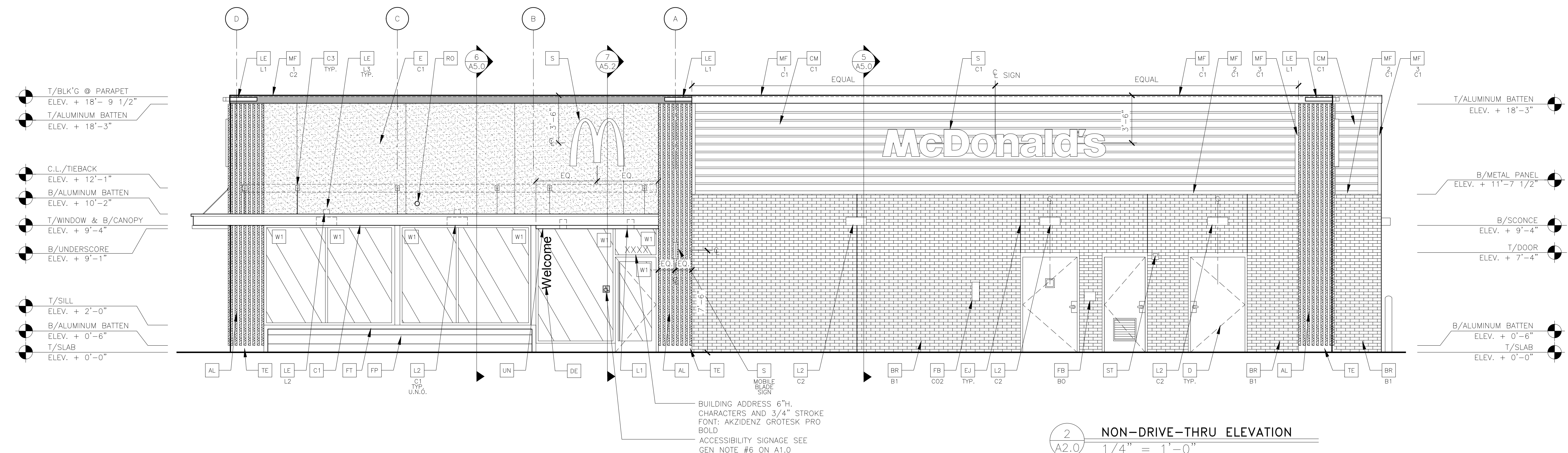


Drive-Thru Side Elevation

Materials Legend	
	Reveal Metal Wall Panel System by Metal Era "Weathered Zinc"
	Apollic Metal Panel (Feature Wall) "RAL 7022"
	Aluminum Battens "Wood grain"
	Aluminum Canopy (Prefinished Metal) "White"
	Aluminum Underscore (Prefinished) "Gold"
	Aluminum Trellis (Prefinished) "RAL 7022"
	Glazing (Windows & Storefront) "1" Insulated Clear Glass"
	Storefront Mullions "Deep Bronze"
	E.I.F.S "Iron Ore" SW7069 by Sherwin Williams
	Metal Coping "Weathered Zinc"
	Service Doors & Frames "Fairview Taupe" by Benjamin Moore
	Modular Face Brick "Silverado" Smooth by Hebron Brick Company



1 FRONT ELEVATION
1/4" = 1'-0"



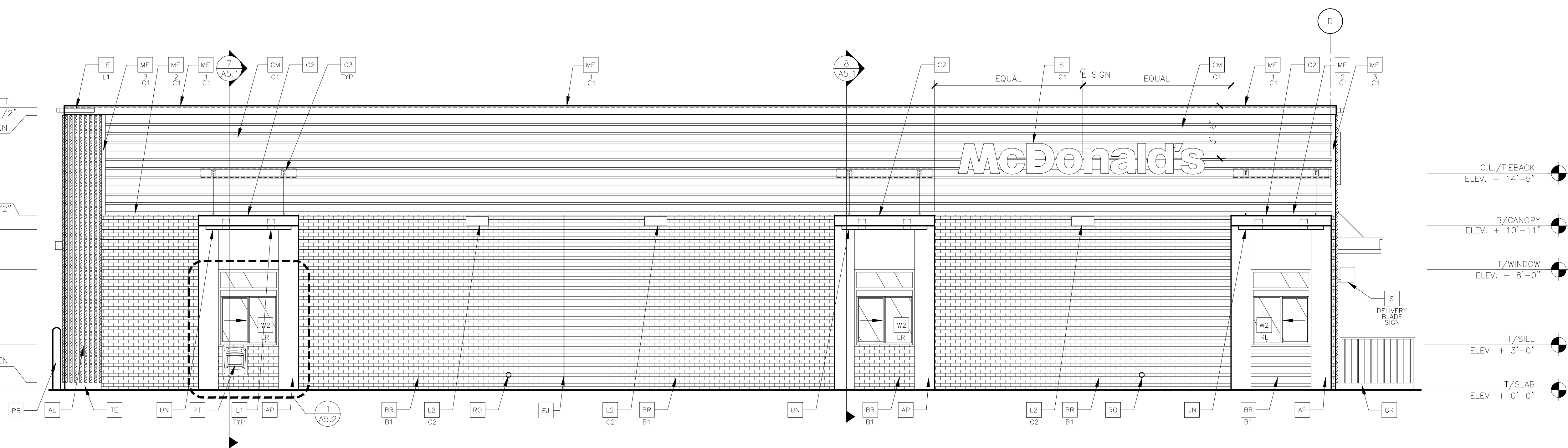
2 NON-DRIVE-THRU ELEVATION
1/4" = 1'-0"

KEY NOTES:

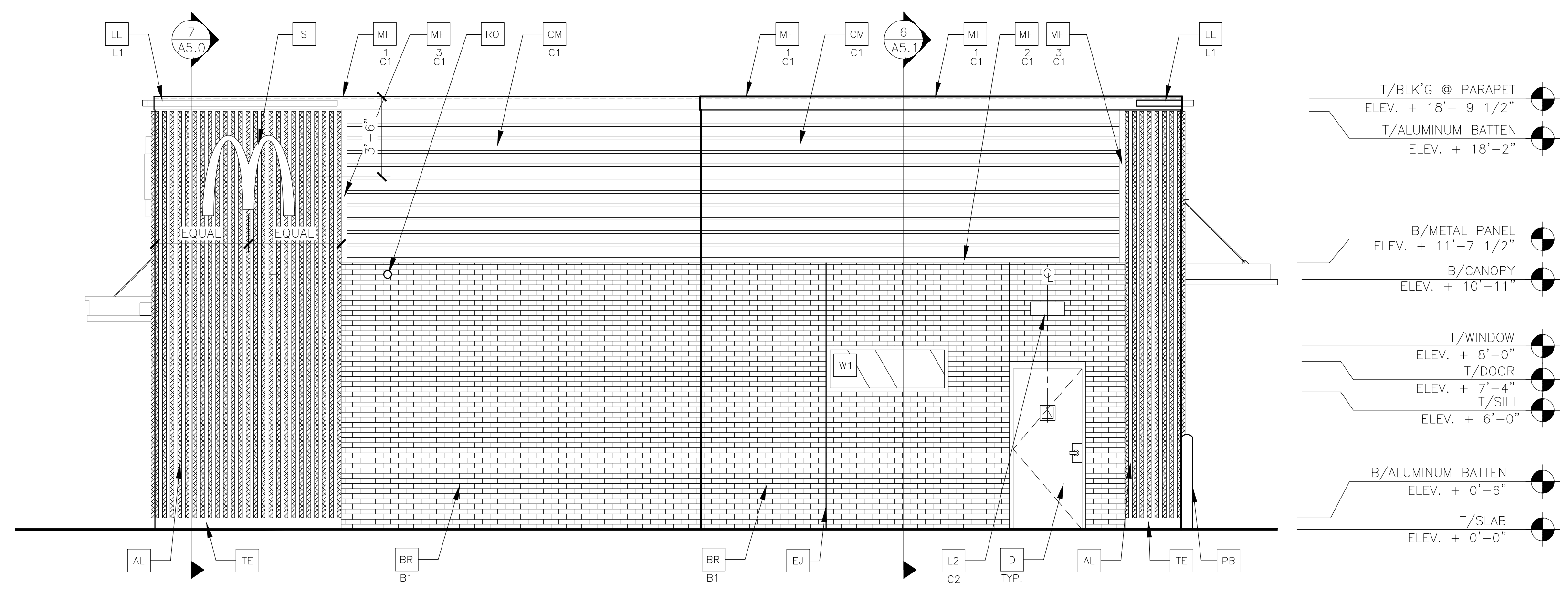
- | | | | | | |
|--|--|--|--|---|--|
| <p>AL ALUMINUM BATTEN SYSTEM
SIZE: 2"x2" PROFILE
COLOR: WOOD GRAIN, BACKRAIL UNFINISHED, ENDCAP PAINTED TO MATCH SUBSTRATE; 1/2" EXTERIOR HIGH DENSITY OVERLAY (HDO) PLYWOOD, BB, GROUP 1, HDO BOTH FACES, APA TRADEMARKED.
COURSE GRIT SAND SURFACES PRIOR TO PRIMING. PRIME AND PAINT BOTH SIDES AND ALL EDGES PRIOR TO INSTALLATION.
SUBSTRATE COLOR: "IRON ORE" SW 7069 BY SHERWIN WILLIAMS</p> <p>AP ALPOLIC METAL PANEL (COLOR: DON GRAY)</p> <p>BR MODULAR FACE BRICK</p> <p>B1 -COLOR:
B1 = "SILVERADO" SMOOTH BY HEBRON BRICK COMPANY</p> <p>C1 ALUMINUM CANOPY SYSTEM W/FASCIA
COLOR: WHITE</p> <p>C2 ALUMINUM CANOPY SYSTEM
COLOR: RAL 7022</p> | <p>C3 ALUMINUM CANOPY TIEBACK
COLOR: RAL 7022
GC TO PROVIDE CONTINUOUS BLOCKING ON WALL BEHIND TIEBACKS. WHEN TIEBACKS ARE INSTALLED ON METAL PANELING.
SEE DETAIL 3/A5.0</p> <p>CJ CONTROL JOINT
T-TYPE: 1 = EIFS</p> <p>CM 7" REVEAL METAL WALL PANEL SYSTEM BY METAL ERA
C1-COLOR:
C1 = WEATHERED ZINC</p> <p>D HOLLOW METAL DOOR
PAINT: "FAIRVIEW TAUPE" HC-85 BY BENJAMIN MOORE</p> <p>DE DECAL BY GRAPHICS SUPPLIER
SURFACE APPLIED, FIELD INSTALLED, PRE CUT, PRE SPACED.
SUPPLIERS:
VOMELA (865) 330-7337, ann.bowen@vomela.com
GFX INTERNATIONAL (847) 543-4600, mcdonaldsdecor@gfxi.com</p> | <p>E EXTERIOR INSULATION FINISH SYSTEM (E.I.F.S.)
C1-COLOR:
C1 = "IRON ORE" SW 7069 BY SHERWIN WILLIAMS</p> <p>EJ EXPANSION JOINT, SEE DETAIL 7/A4.1</p> <p>FB CO2 - CO2 = BULK CO2 FILL BOX (EQPM SCHEDULE ITEM 49.00)
BO = BULK OIL FILL BOX (EQPM SCHEDULE ITEM 700.18)</p> <p>GR GUARD RAIL -SEE SITE PLAN FOR EXACT LOCATION AND LENGTH
PAINT: "IRON ORE" SW 7069 BY SHERWIN WILLIAMS</p> <p>L1 RECESSED DOWN LIGHT FIXTURE - SEE ELECTRICAL
COLOR: GOLD</p> <p>L2 RADIAL SCONCE LIGHT FIXTURE - SEE ELECTRICAL
C1-COLOR:
C1 = WHITE
C2 = PLATINUM SILVER</p> | <p>LE ACCENT LIGHTING - SEE ELECTRICAL
L1 -LED LIGHT:
L1 = SLIM LED (DOWN ONLY)
L2 = INTEGRAL CANOPY FIXTURE
L3 = UP ONLY FLOOD FIXTURE</p> <p>MF METAL FASCIA
C1-TYPE:
1 = PRE-FAB ANCHOR-TITE FASCIA
2 = BOTTOM TRIM AT METAL REVEAL PANEL
3 = VERTICAL TRIM AT METAL REVEAL PANEL CORNERS, CLOSURES
COLOR:
C1 = WEATHERED ZINC
C2 = RAL 7022</p> <p>PB PIPE BOLLARD - PAINTED YELLOW</p> <p>PT (RMHC) COIN COLLECTOR
MODEL: #WPT STD
CALL 1-888-743-7435 TO ORDER</p> | <p>RO ROOF DRAIN OVERFLOW PIPE PAINT TO MATCH SURROUNDING MATERIAL</p> <p>S McDONALD'S SIGNAGE BY OTHERS - UNDER SEPARATE PERMIT.
C1-COLOR:
C1 = WEATHERED ZINC RACEWAY
C2 = RAL 7022 RACEWAY</p> <p>ST CO2 STROBE/ALARM. SEE MECHANICAL DRAWINGS FOR SPECIFICATION.</p> <p>TE TRU EXTERIOR 1"x6" TRIM, PAINTED ON SITE
COLOR: "IRON ORE" SW 7069 BY SHERWIN WILLIAMS</p> <p>UN METAL UNDERSCORE
COLOR: GOLD</p> | <p>W1 EXTERIOR WINDOW ASSEMBLY - TEMPERED GLASS
COLOR: DARK BRONZE</p> <p>W2 DRIVE-THRU WINDOW BY READY ACCESS
MODEL: 600 SERIES, 36" SERVICE HEIGHT WITH TRANSOM, MANUAL OPEN; ELECTRONIC RELEASE
COLOR: DEEP BRONZE
SLIDE DIRECTION: RL = RIGHT TO LEFT
LR = LEFT TO RIGHT</p> |
|--|--|--|--|---|--|

PREPARED BY: CORE STATES GROUP	DATE:	REV:	DESCRIPTION:
44 East Wacker Drive Somerville, NJ 08876 www.corestates.com			
PREPARED FOR: McDonald's USA, LLC	TITLE: 2023 STANDARD BUILDING - BB20	SHEET NO: A2.0	ELEVATIONS
© 2023 McDonald's Corporation These drawings and specifications are the confidential and proprietary property of McDonald's USA, LLC and shall not be copied or reproduced without written authorization. The contract documents were prepared in accordance with the contract documents for the project and are not suitable for use on a different site or at a later time. Use of these drawings for reference or example on another project requires the contractor to obtain the necessary permission from the contractor. The contract documents for reuse on another project is not authorized.	DRAWN BY: B.ARDALLA	DATE: 2024.02	DESCRIPTION: WOOD BEARING WALLS W/BRICK VENEER WOOD TRUSS ROOF FRAMING E.I.F.S./BATTEN/BRICK VENEER FINISH
REVIEWED BY: M.PELINI	DATE ISSUED: 03.15.2024	C.S.G. PROJECT #: MCD_382/51	WINSTON-SALEM, NC
44 East Wacker Drive Somerville, NJ 08876 www.corestates.com			

- T/BLK*G @ PARAPET
ELEV. + 18'-9 1/2"
- T/ALUMINUM BATTEN
ELEV. + 18'-3"
- B/METAL PANEL
ELEV. + 11'-7 1/2"
- B/UNDERSORE
ELEV. + 10'-8"
- T/WINDOW
ELEV. + 8'-0"
- T/SILL
ELEV. + 3'-0"
- B/ALUMINUM BATTEN
ELEV. + 0'-6"
- T/SLAB
ELEV. + 0'-0"



1 DRIVE THRU ELEVATION
1/4" = 1'-0"



2 REAR ELEVATION
1/4" = 1'-0"

KEY NOTES:

- AL ALUMINUM BATTEN SYSTEM
SIZE: 2"x2" PROFILE
COLOR: WOOD GRAIN, BACKRAIL UNFINISHED, ENDCAP PAINTED TO MATCH
SUBSTRATE: 1/2" EXTERIOR HIGH DENSITY OVERLAY (HDO) PLYWOOD, BB, GROUP 1, HDO BOTH FACES, APA TRADEMARKED.
COURSE GRIT SAND SURFACES PRIOR TO PRIMING. PRIME AND PAINT BOTH SIDES AND ALL EDGES PRIOR TO INSTALLATION.
SUBSTRATE COLOR: "IRON ORE" SW 7069 BY SHERWIN WILLIAMS
- AP ALPOLIC METAL PANEL (COLOR: DON GRAY)
- C1 ALUMINUM CANOPY SYSTEM W/FASCIA
COLOR: WHITE
- C2 ALUMINUM CANOPY SYSTEM
COLOR: RAL 7022
- C3 ALUMINUM CANOPY TIEBACK
COLOR: RAL 7022
GC TO PROVIDE CONTINUOUS BLOCKING ON WALL BEHIND TIEBACKS, WHEN TIEBACKS ARE INSTALLED ON METAL PANELING.
SEE DETAIL 3/A5.0
- CJ CONTROL JOINT
T-TYPE: 1 = EIFS
- D HOLLOW METAL DOOR
PAINT: "FAIRVIEW TAUPE" HC-85 BY BENJAMIN MOORE
- DE DECAL BY GRAPHICS SUPPLIER
SURFACE APPLIED, FIELD INSTALLED, PRE CUT, PRE SPACED.
SUPPLIERS:
VOMELA (865) 330-7337, ann.bowen@vomela.com
GFX INTERNATIONAL (847) 543-4600, mcdonaldsdecor@gfxi.com
- E EXTERIOR INSULATION FINISH SYSTEM (E.I.F.S.)
C1-COLOR:
C1 = "IRON ORE" SW 7069 BY SHERWIN WILLIAMS
- EJ EXPANSION JOINT. SEE DETAIL 7/A4.1
- FB CO2 = CO2 = BULK CO2 FILL BOX (EOPM SCHEDULE ITEM 49.00)
BO = BULK OIL FILL BOX (EOPM SCHEDULE ITEM 700.18)
- FR FIBER CEMENT LAP SIDING: SMOOTH HARDI-BEARD PLANK BY JAMES HARDIE, 8-1/4" WIDTH, 7" EXPOSURE, HZ5
COLOR: TIMBER BARK
- FT FIBER CEMENT TRIM: HARDIE TRIM BOARDS 4/4 SMOOTH, 1 5/8" AND 3 1/2" WIDTH, 3/4" THICK, HZ5
COLOR: TIMBER BARK (CHECK 1 5/8" PRE-Paint AVAILABILITY)
- GR GUARD RAIL -SEE SITE PLAN FOR EXACT LOCATION AND LENGTH
PAINT: "IRON ORE" SW 7069 BY SHERWIN WILLIAMS
- L1 RECESSED DOWN LIGHT FIXTURE - SEE ELECTRICAL
COLOR: GOLD
- L2 RADIAL SCONCE LIGHT FIXTURE - SEE ELECTRICAL
C1-COLOR:
C1 = WHITE
C2 = PLATINUM SILVER
- LE ACCENT LIGHTING - SEE ELECTRICAL
LT-LED LIGHT;
L1 = SLIM LED (DOWN ONLY)
L2 = INTEGRAL CANOPY FIXTURE
L3 = UP ONLY FLOOD FIXTURE
- MF METAL FASCIA
T-TYPE:
1 = PRE-FAB ANCHOR-TITE FASCIA
2 = BOTTOM TRIM AT METAL REVEAL PANEL
3 = VERTICAL TRIM AT METAL REVEAL PANEL CORNERS, CLOSURES
COLOR:
C1 = WEATHERED ZINC
C2 = RAL 7022
- PB PIPE BOLLARD - PAINTED YELLOW
PT (RMHC) COIN COLLECTOR
MODEL: #WPT STD
CALL 1-888-743-7435 TO ORDER
- RO ROOF DRAIN OVERFLOW PIPE PAINT TO MATCH SURROUNDING MATERIAL
- S McDONALD'S SIGNAGE BY OTHERS - UNDER SEPARATE PERMIT.
C1-COLOR:
C1 = WEATHERED ZINC RACEWAY
C2 = RAL 7022 RACEWAY
- ST CO2 STROBE/ALARM. SEE MECHANICAL DRAWINGS FOR SPECIFICATION.
- TE TRU EXTERIOR 1"x6" TRIM, PAINTED ON SITE
COLOR: "IRON ORE" SW 7069 BY SHERWIN WILLIAMS
- UN METAL UNDERSORE
COLOR: GOLD
- W1 EXTERIOR WINDOW ASSEMBLY - TEMPERED GLASS
COLOR: DARK BRONZE
- W2 DRIVE-THRU WINDOW BY READY ACCESS
MODEL: 600 SERIES, 36" SERVICE HEIGHT WITH TRANSOM, MANUAL OPEN, ELECTRONIC RELEASE
COLOR: DEEP BRONZE
SLIDE DIRECTION: RL = RIGHT TO LEFT
LR = LEFT TO RIGHT

CORE STATES

GROUP

PREPARED BY:

McDonald's USA, LLC

DRAWN BY:

B.ARDALLA

STD ISSUE DATE:

2024.02

REVIEWED BY:

M.PELINI

DATE ISSUED:

03.15.2024

C.S.G. PROJECT #:

MCD.382251

TITLE:

2023 STANDARD BUILDING - BB20

DESCRIPTION:

4584-WOOD/WOOD

SHEET NO.:

A2.1

ELEVATIONS:

DATE:

REV.:

DESCRIPTION: