



**Invitational Call to Artists
Request for Proposals (RFP)
Winston-Salem/Forsyth County (NC) Public Art Commission**

Benton Convention Center Art Features

Introduction:

The Winston-Salem/Forsyth County (NC) Public Art Commission (PAC) is seeking several artists or artist teams to design, fabricate, and install numerous permanent art features at the newly rehabilitated Benton Convention Center in downtown Winston-Salem. The convention center is located in the heart of downtown Winston-Salem and acts as the gateway to the city with more than 100,000 visitors each year. Winston-Salem is known as the “City of Arts and Innovation,” and it is our goal that the convention center reflects that objective.

The Benton Convention Center measures 100,000 square feet on two levels. Nineteen spaces are reserved for public art to act as focal points in the building’s entrance and concourses. Proposals may include, but are not limited to, murals or other painting types, photography, ceramics, glassworks, and metals. Artists may submit proposals for multiple spaces within the convention center.

Project Intent:

Each art feature should:

- Create a focal point of excitement and interest for convention center visitors;
- Emphasize Winston-Salem’s role as a “City of Arts and Innovation;”
- Be an original, standalone design;
- Require minimal maintenance; and
- Not pose any safety risks to the viewing audience.

Budget:

Artists submitting proposals must include a proposed budget for their specific project. The proposed budget must cover all associated costs of the project, including but not limited to, design, fabrication, materials, labor, transportation, insurance, and installation of the art feature.

The selected artist or artist team will receive a contract for design, fabrication and installation services. The art feature shall be owned by the City of Winston-Salem. The artist shall retain copyright and must allow the City and the PAC permission to use images for educational and promotional purposes.

Eligibility:

The project is open to artists living in North Carolina, age 18 and over, regardless of race, creed, color, sex, sexual orientation, gender identity, pregnancy, age, religion, political affiliation or beliefs, national origin, or handicap, unless a bona fide occupational qualification exists.

RFP Selection Process:

The review committee is composed of Public Art Commission members and stakeholders associated with the convention center. The committee will evaluate all submissions and recommend up to three (3) finalists for each space. Finalist proposals should be developed enough to provide a good understanding of how the art will look within the context of the location. Finalists will be asked to present their proposals to the committee in person.

Required Submission Materials:

- Project proposal with visual support materials, such as digital images in pdf or jpg format, websites, PowerPoint presentations, videos, CDs, DVDs, or prints
- Proposed budget
- Artists must specify the site number for each proposal
- Artists must specify whether art will be fabricated on-site or off-site
- Up to five (5) work samples with a corresponding numbered list describing each image (limit to one page)
- Resume or CV (1-2 pages per artist or artist team member)
- Self-addressed stamped envelope for the return of hardcopy materials

Schedule:

March 24, 2017: Deadline for submissions, due at 5:00 p.m. (this is not a postmark deadline)

Week of March 27, 2017: Committee review and selection of finalists

Week of April 17, 2017: Presentations by finalists (in person)

Late spring, early summer 2017: Fabrication and installation completed

To Apply:

Submissions may be submitted through Dropbox via the following link:

<https://www.dropbox.com/request/ucnzf3dcD3A1hnDAMu9Y>

Submissions may be emailed as a .zip file (10mb max) to kellyb@cityofws.org.

Artists may mail or otherwise deliver a compact disc, USB drive, or printed materials to:

City-County Planning

Attn: Kelly Bennett

P.O. Box 2511

Winston-Salem, NC 27102

Inquiries:

Please contact Kelly Bennett, Program Manager, Winston-Salem/Forsyth County Public Art Commission. 336-747-7062, kellyb@cityofws.org.

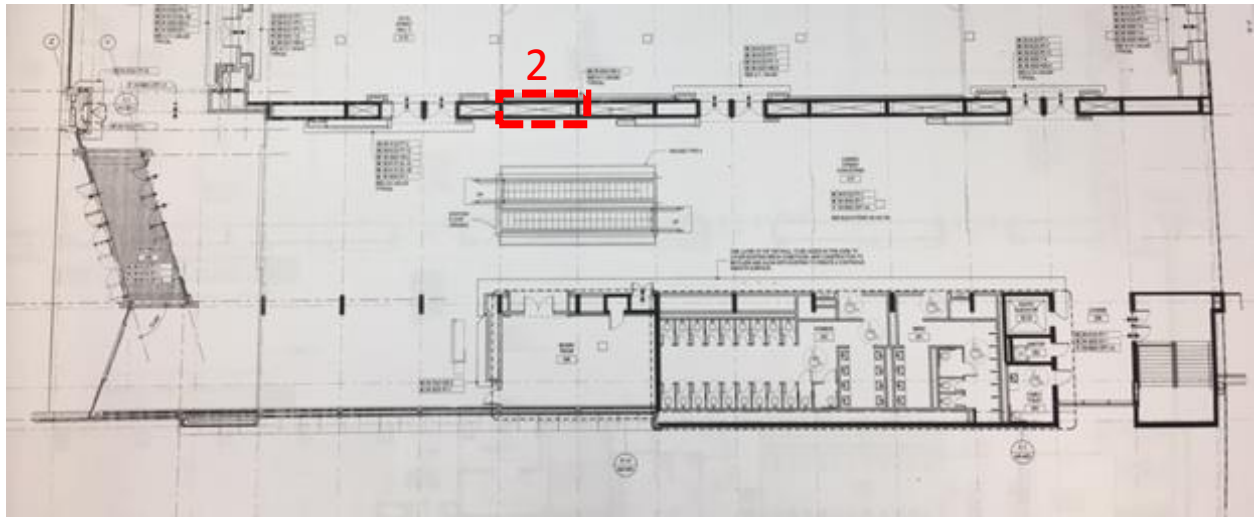
Site 1:

Site 1 is a pair of columns between conference room doorways in the convention center's prefunction space near the Fifth Street entrance. Each column measures 7'10" wide by 14' tall.



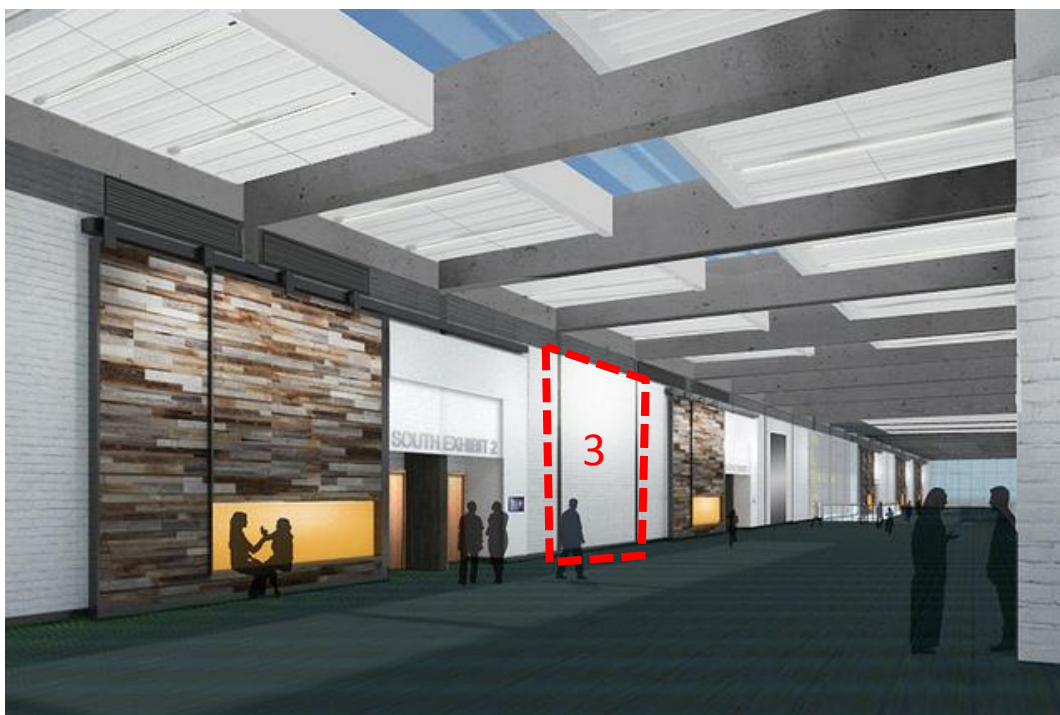
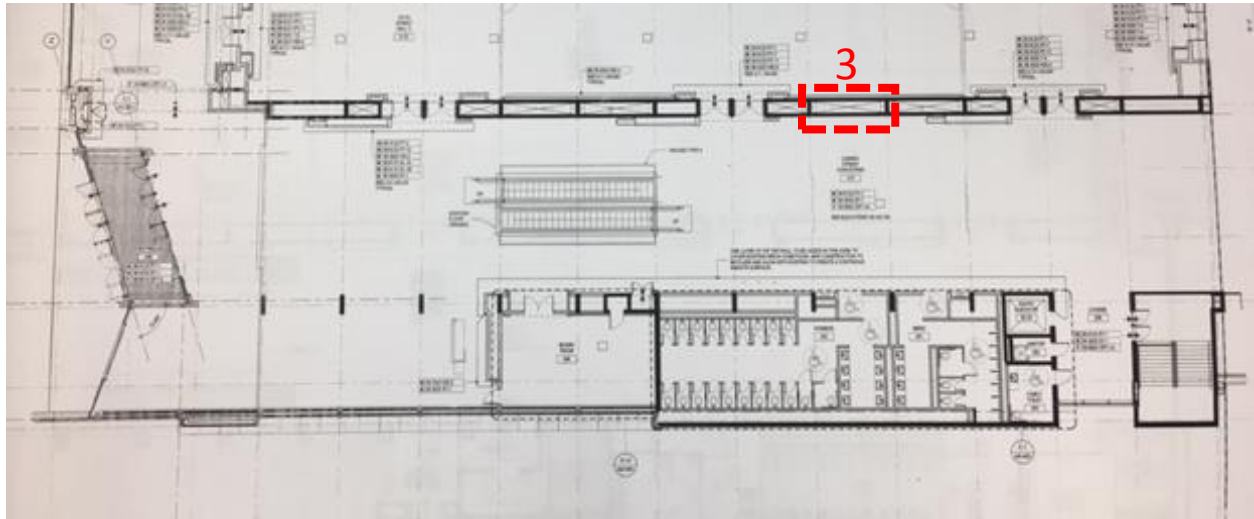
Site 2:

Site 2 is a painted white brick wall space on the west side of the second floor concourse. It measures 16' wide by 16' high.



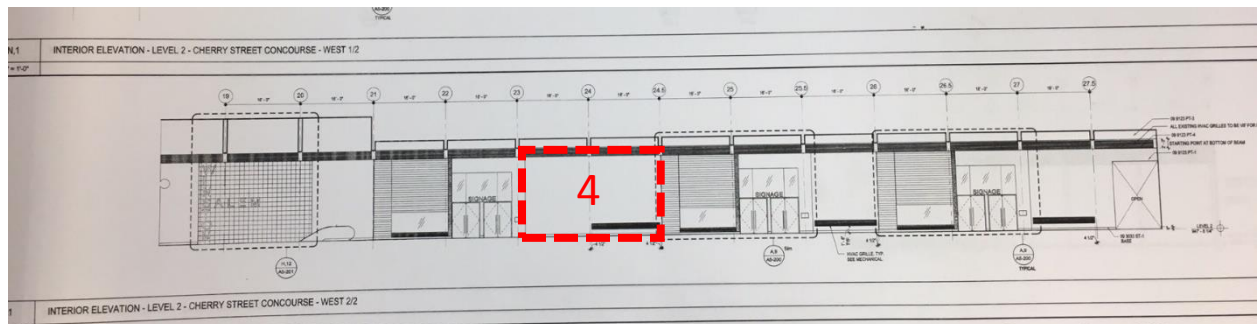
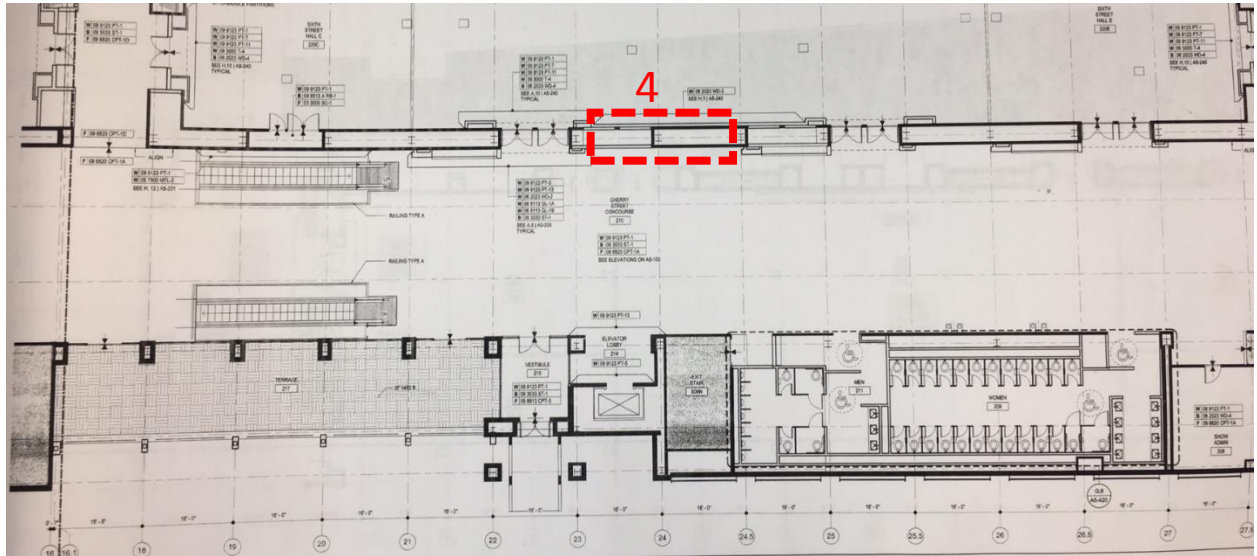
Site 3:

Site 3 is a painted white brick wall space on the west side of the second floor concourse. It measures 16' wide by 16' high. There is a HVAC vent that measures 4' wide by 1' high that must not be covered located approximately 7' off the floor.



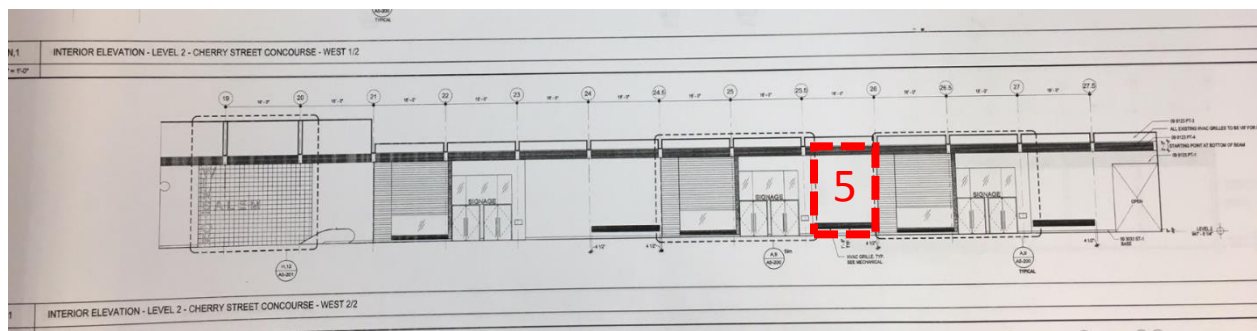
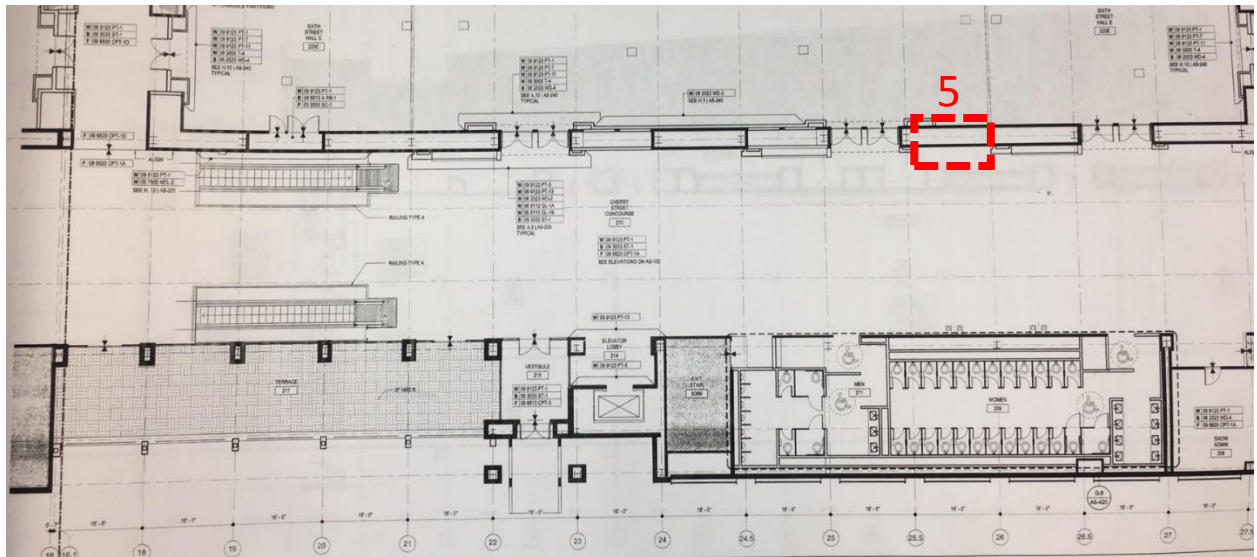
Site 4:

Site 4 is a painted white brick wall space on the west side of the second floor concourse. It measures 28' wide by 16' high. There is a HVAC vent that measures 16' wide by 1.5' high that must not be covered located approximately 1' off the floor.



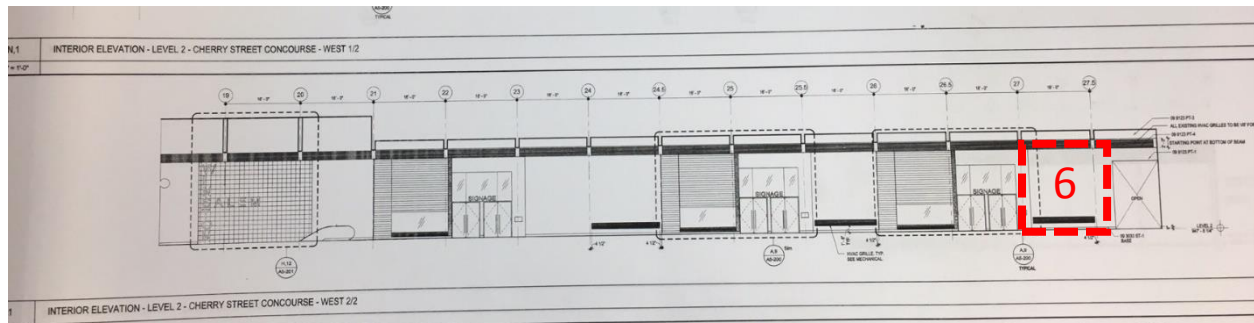
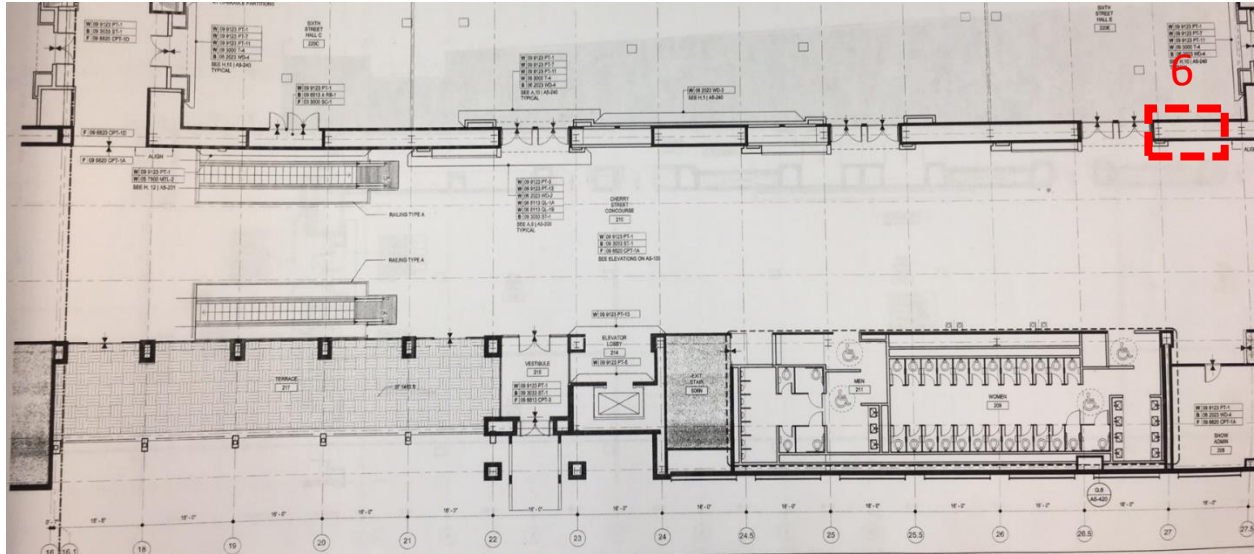
Site 5:

Site 5 is a painted white brick wall space on the west side of the second floor concourse. It measures 12' wide by 16' high. There is a HVAC vent that measures 16' wide by 1.5' high that must not be covered located approximately 1' off the floor.



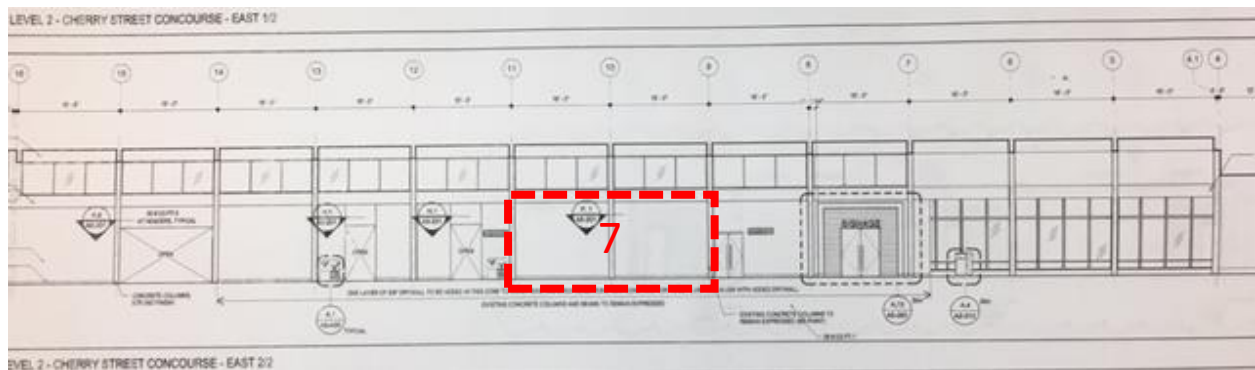
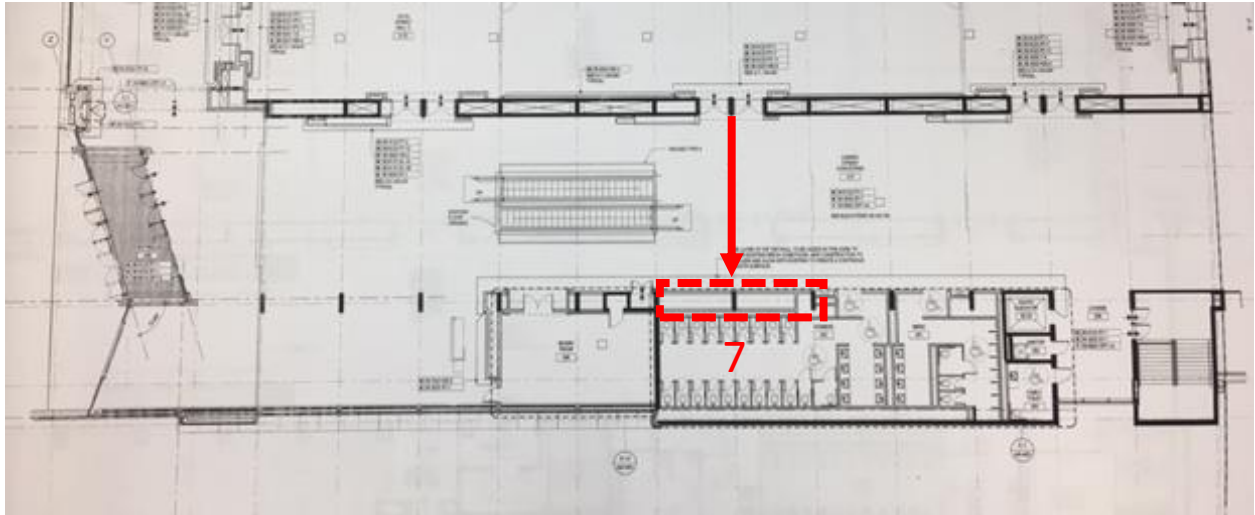
Site 6:

Site 6 is a painted white brick wall space on the west side of the second floor concourse. It measures 16' wide by 16' high. There is a HVAC vent that measures 16' wide by 1.5' high that must not be covered located approximately 1' off the floor.



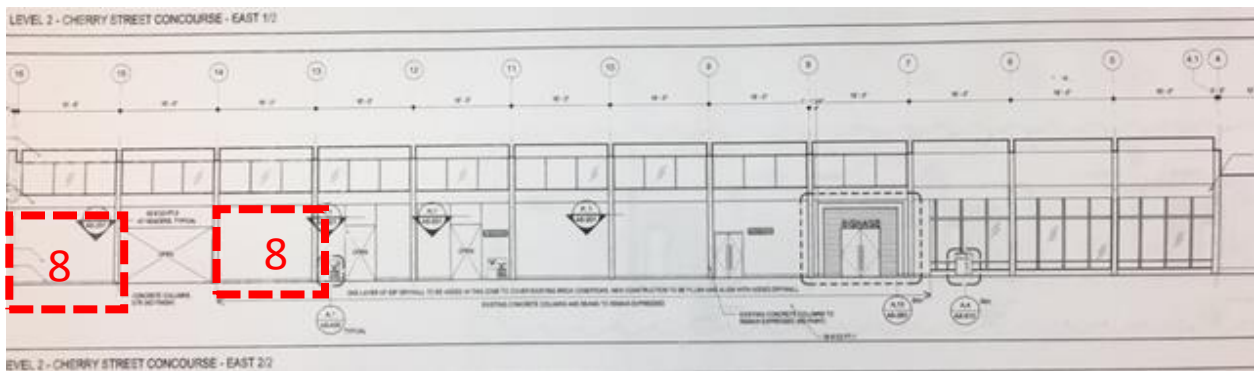
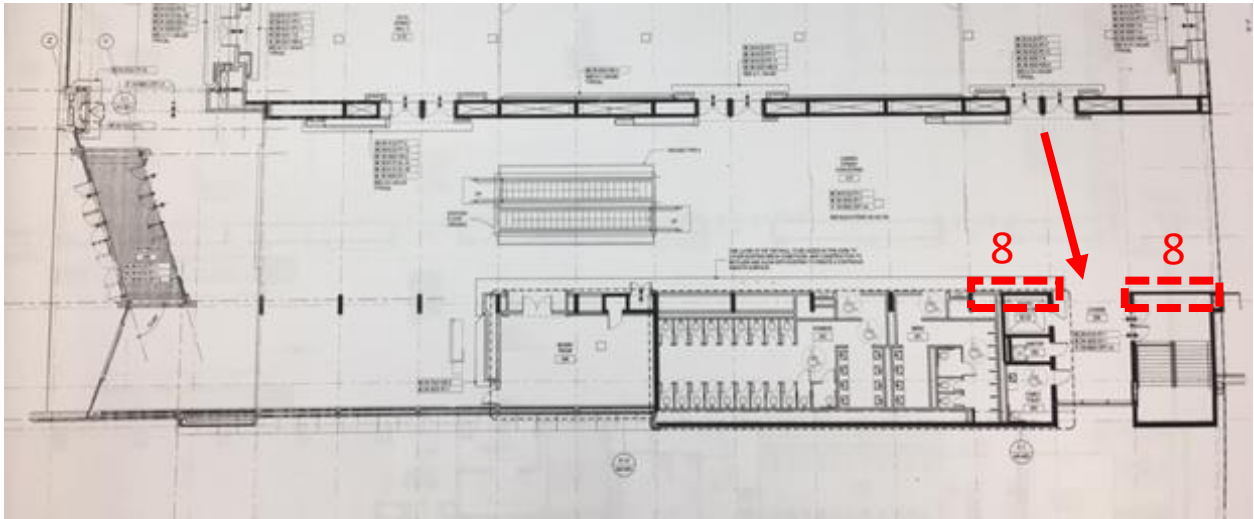
Site 7:

Site 7 is a wall space on the east side of the second floor concourse across from the Winston Ballroom. It measures 32' wide by 12' high and is constructed of 5/8" drywall over brick with a 1'-wide concrete column in the center of the space.



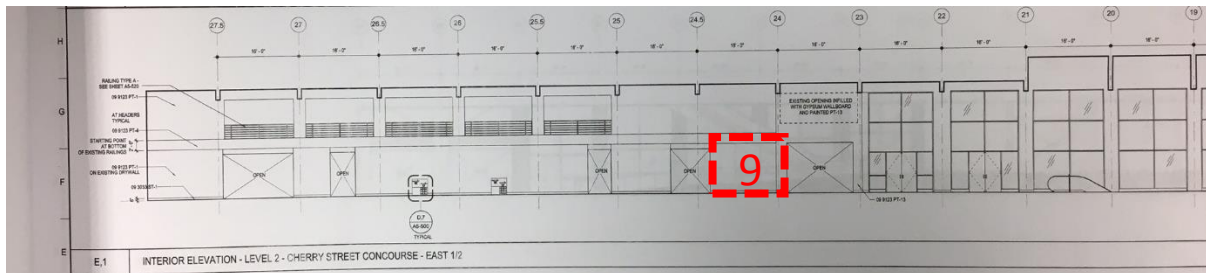
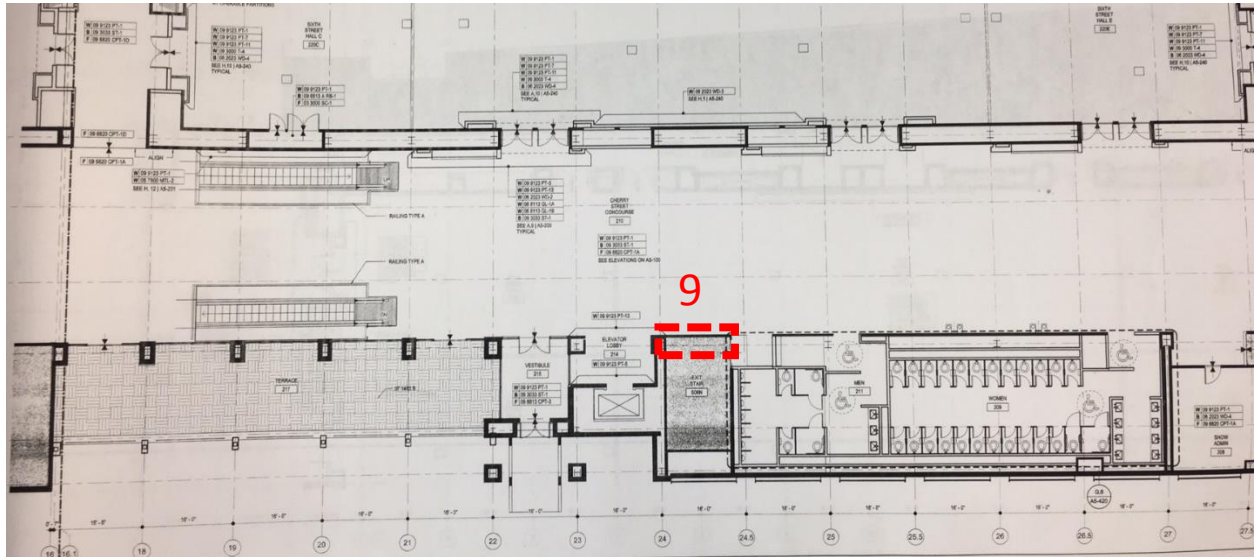
Site 8:

Site 8 is a pair of wall spaces on either side of a 16' lounge area on the east side of the second floor concourse. Each space measures 16' wide by 12' high and is constructed of 5/8" drywall over brick. They are located across from the Winston Ballroom. Proposals should include both spaces together.



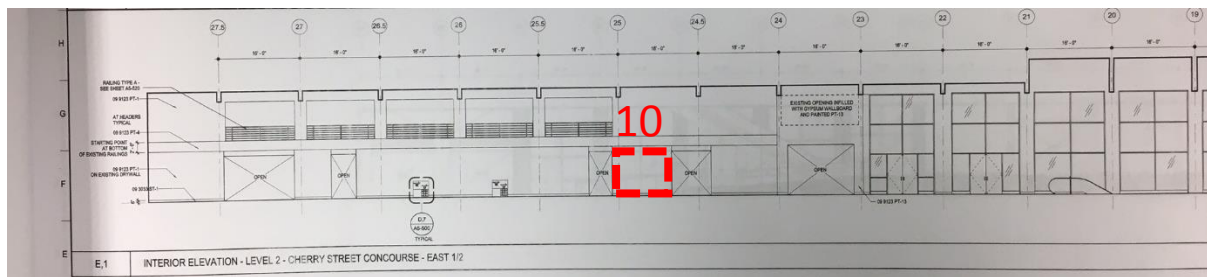
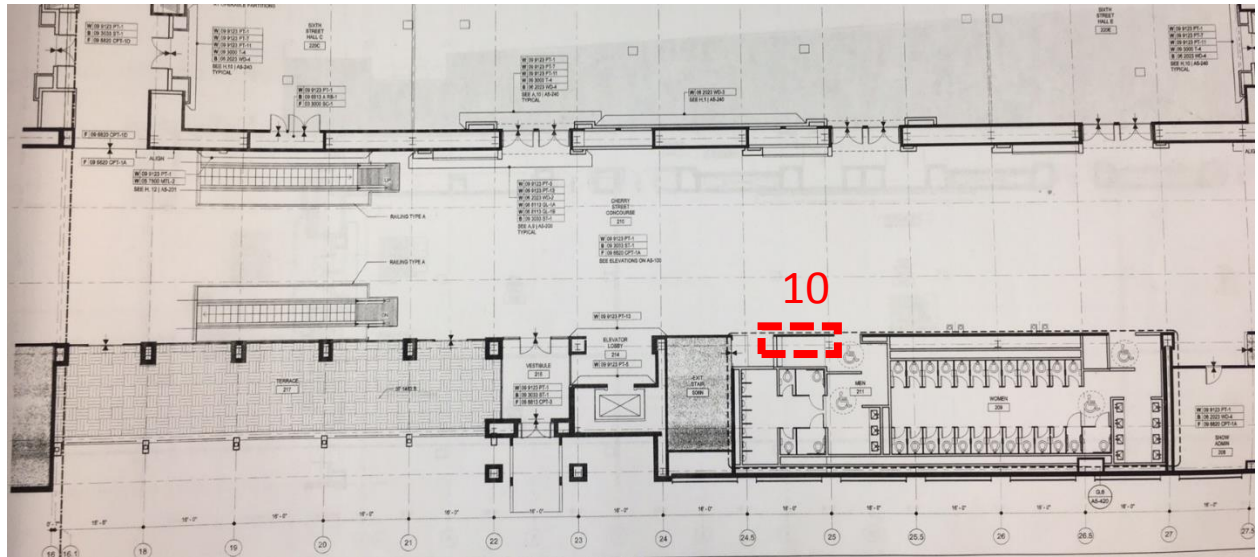
Site 9:

Site 9 is a wall space on the east side of the second floor concourse. It measures 12' wide by 12' high and is constructed of 5/8" drywall over brick. It is located across from the Salem Ballroom.



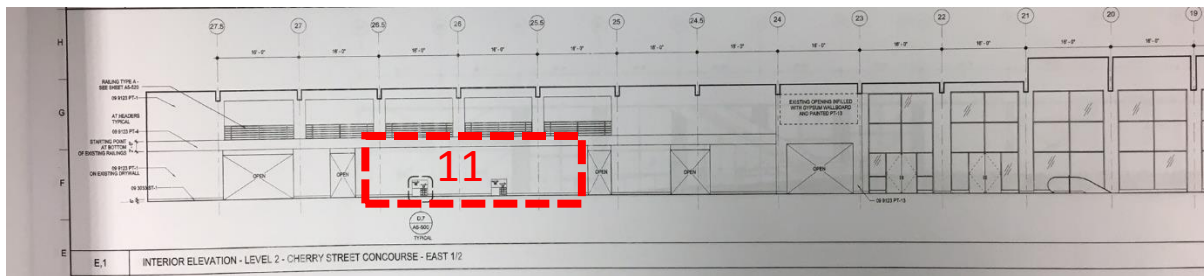
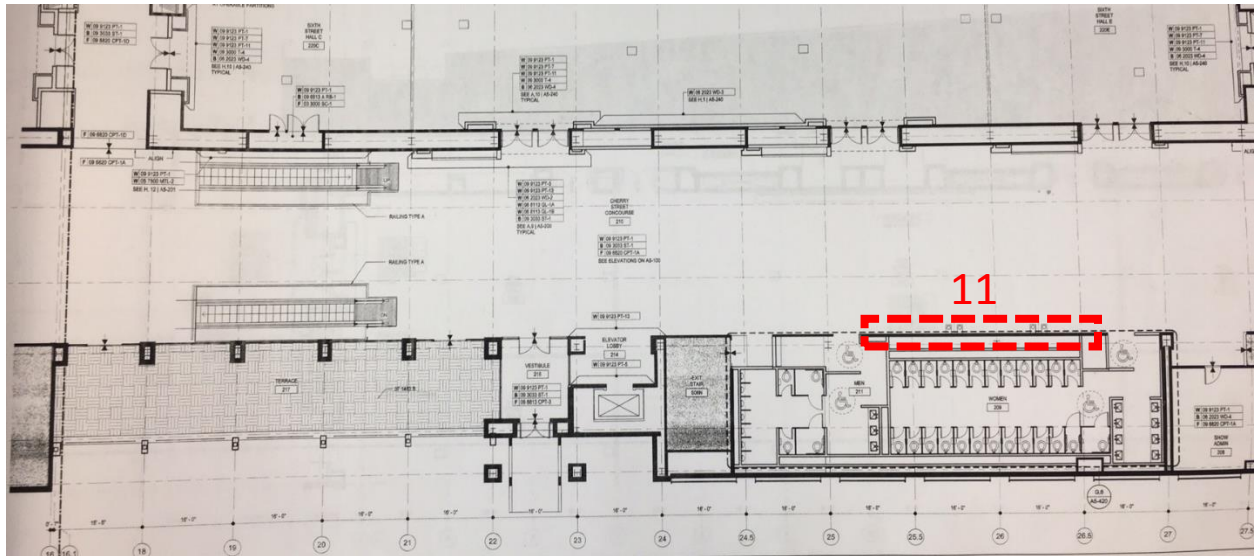
Site 10:

Site 10 is a wall space on the east side of the second floor concourse. It measures 10' wide by 12' high and is constructed of 5/8" drywall over brick. It is located across from the Salem Ballroom.



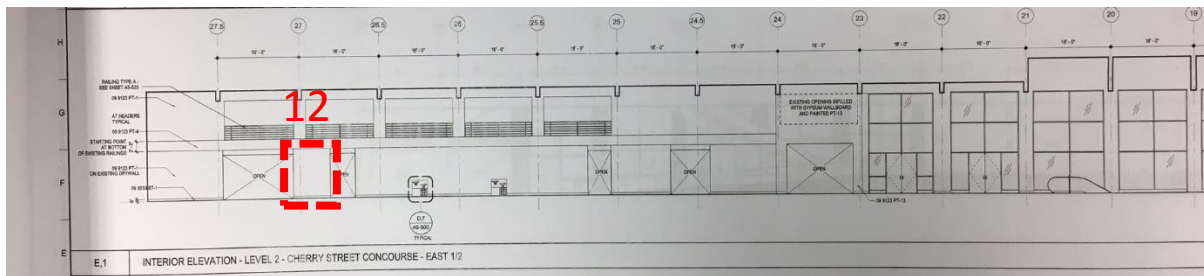
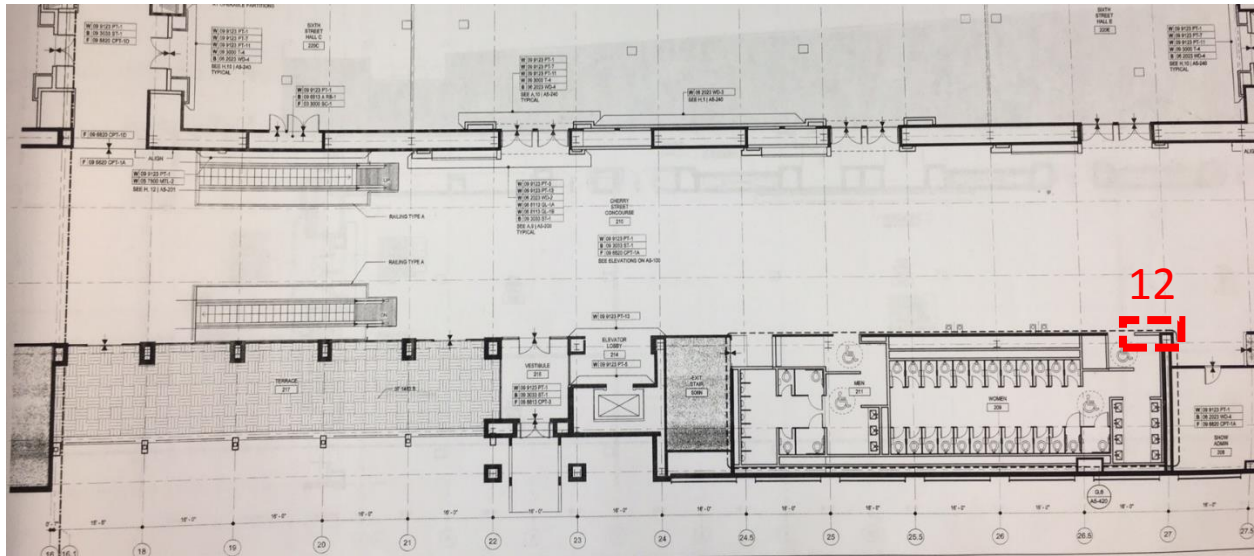
Site 11:

Site 11 is a wall space on the east side of the second floor concourse. It measures 44' wide by 10' high and is constructed of 5/8" drywall over brick and includes two water fountains. It is located across from the Salem Ballroom.



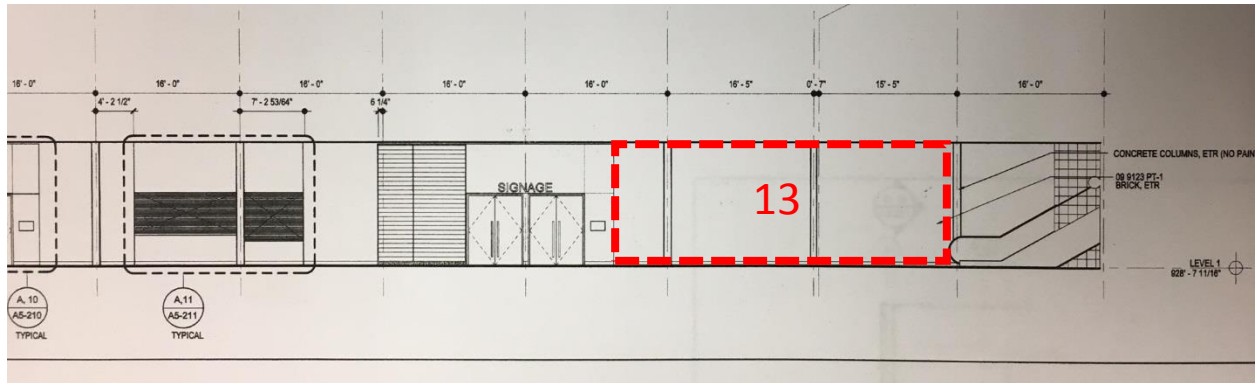
Site 12:

Site 12 is a wall space on the east side of the second floor concourse. It measures 7' wide by 10' high and is constructed of 5/8" drywall over brick and includes two water fountains. It is located across from the Salem Ballroom.



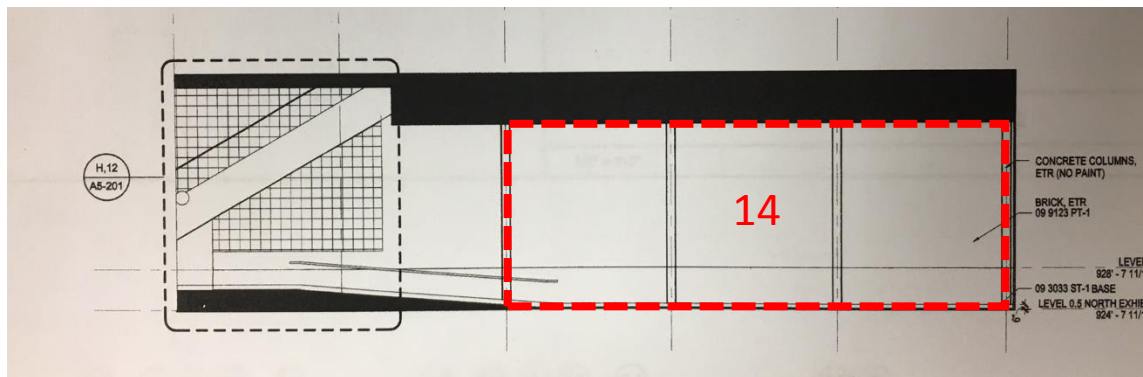
Site 13:

Site 13 is a wall space on the west side of the first floor concourse. It measures 38' wide by 13' high and is constructed of white painted brick with two 1'-wide concrete columns at foot 6 and 22 when measuring from the left. The site is located at the base of an escalator.



Site 14:

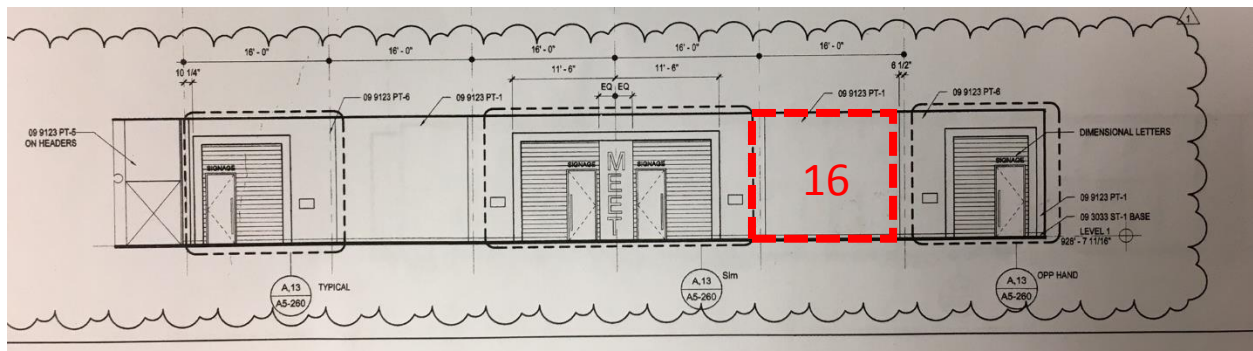
Site 14 is a wall space on the west side of the first floor concourse. It measures 48' wide by 16' high and is constructed of white painted brick with two 1'-wide concrete columns at foot 16 and 32 when measuring from the left.



Site 15 is a wall space on the east side of the first floor concourse. It measures 15' wide by 13' high and is constructed of white painted brick with two 1'-wide concrete columns at foot 16 and 32 when measuring from the left.

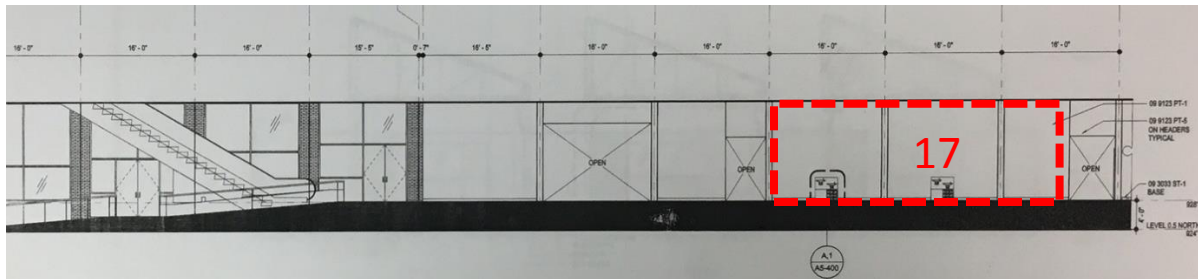


Site 16 is a wall space on the east side of the first floor concourse. It measures 15' wide by 13' high and is constructed of white painted brick with two 1'-wide concrete columns at foot 16 and 32 when measuring from the left.



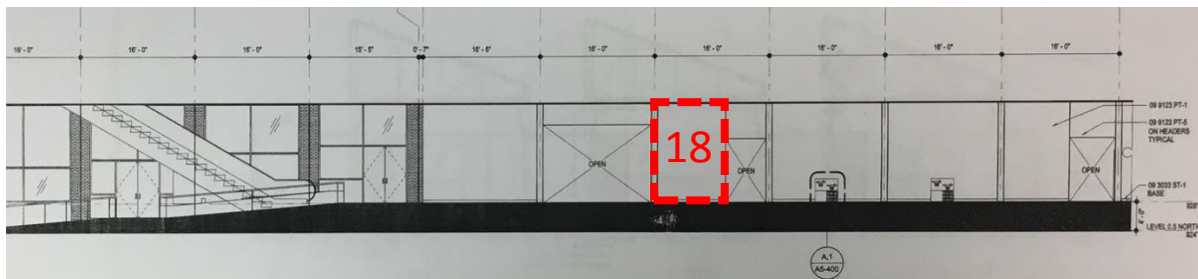
Site 17:

Site 17 is a wall space on the east side of the first floor concourse. It measures 39' wide by 13' high with two 1'-wide concrete columns at foot 16 and 32 when measuring from the left. It is constructed of 5/8" drywall over brick and includes two water fountains.



Site 18:

Site 18 is a wall space on the east side of the first floor concourse. It measures 9' wide by 13' high. It is constructed of 5/8" drywall over brick.



Site 19:

Site 19 is a wall space on the east side of the first floor concourse. It measures 16' wide by 13' high. It is constructed of 5/8" drywall over brick.

