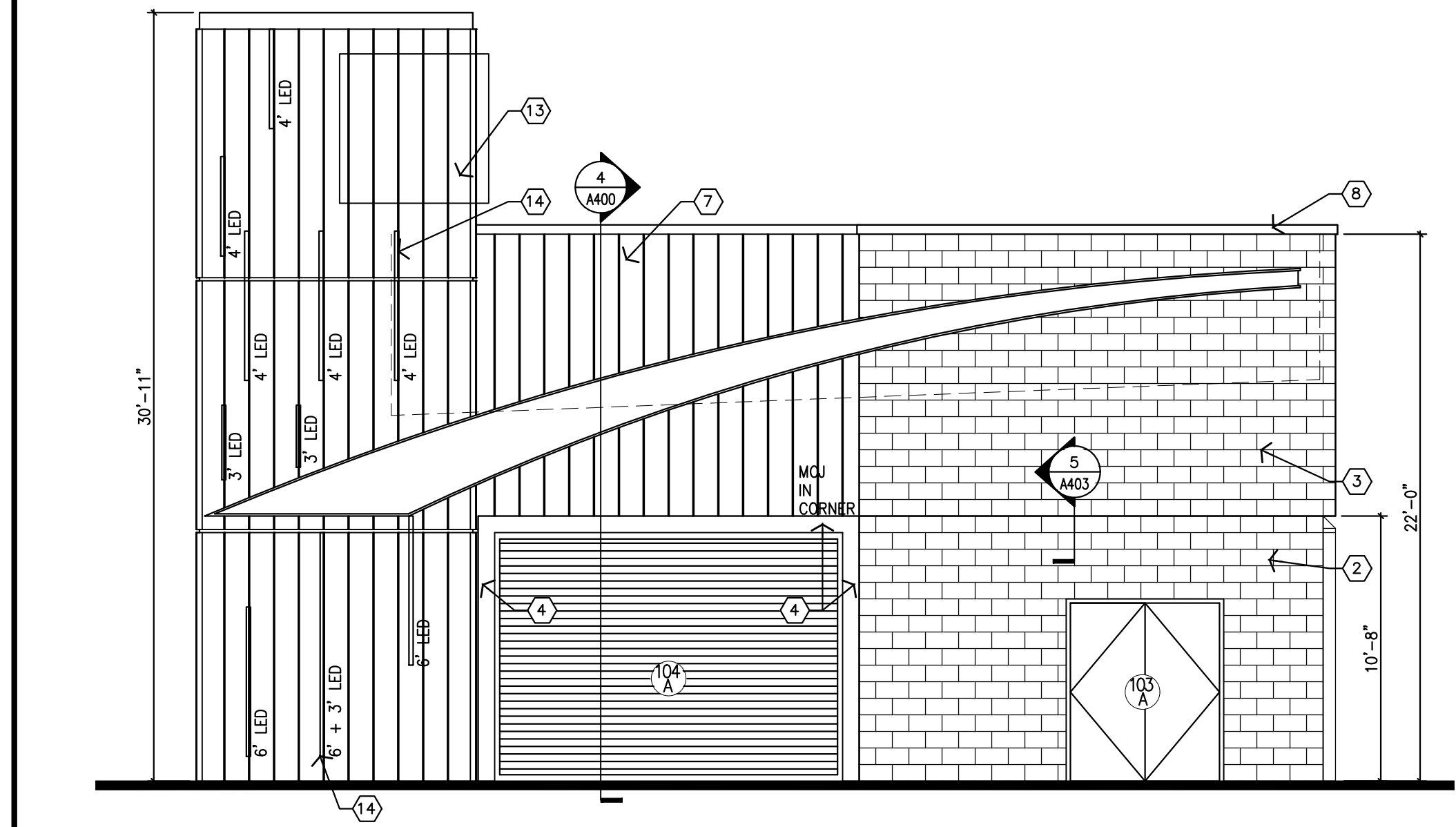
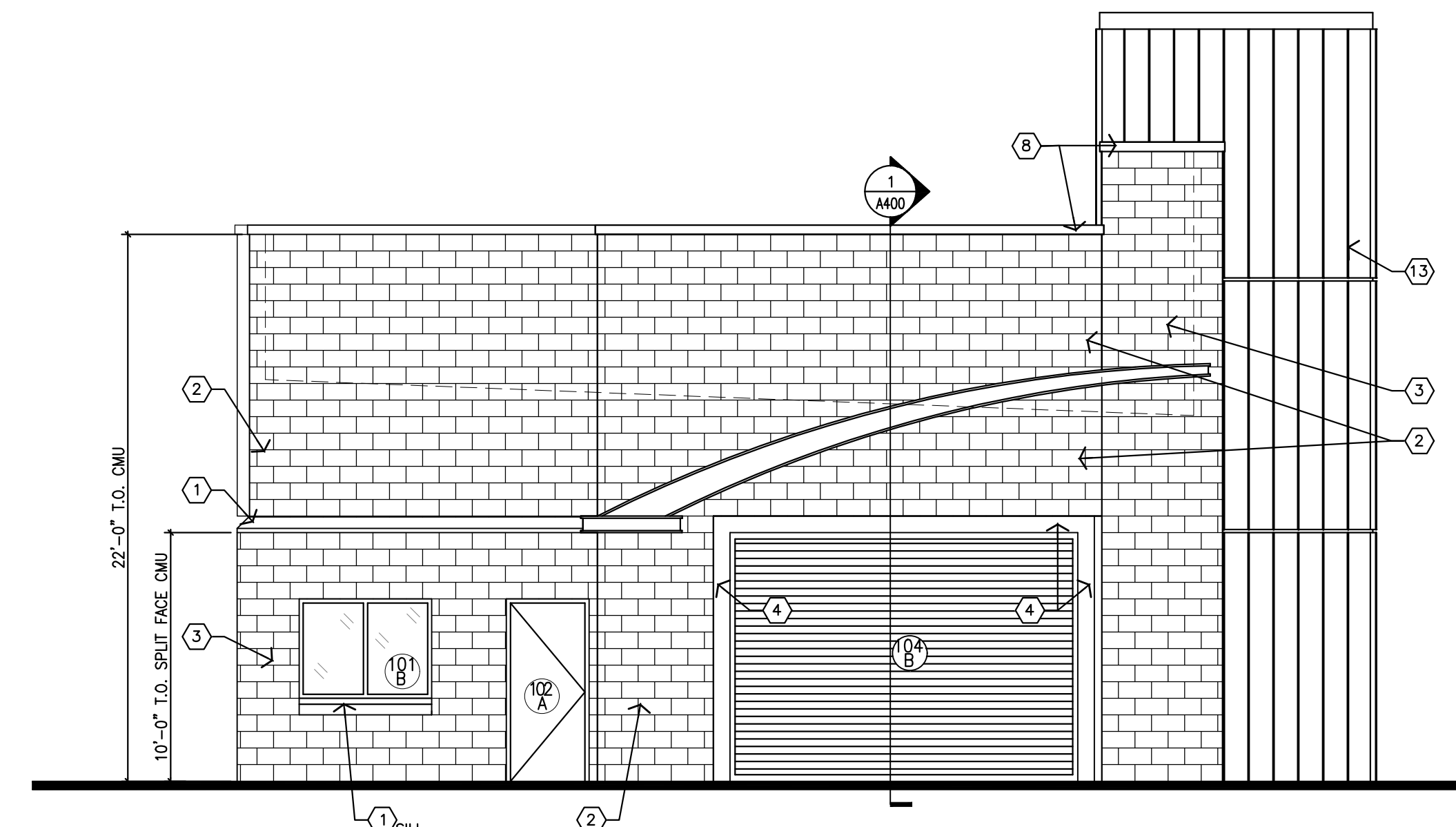


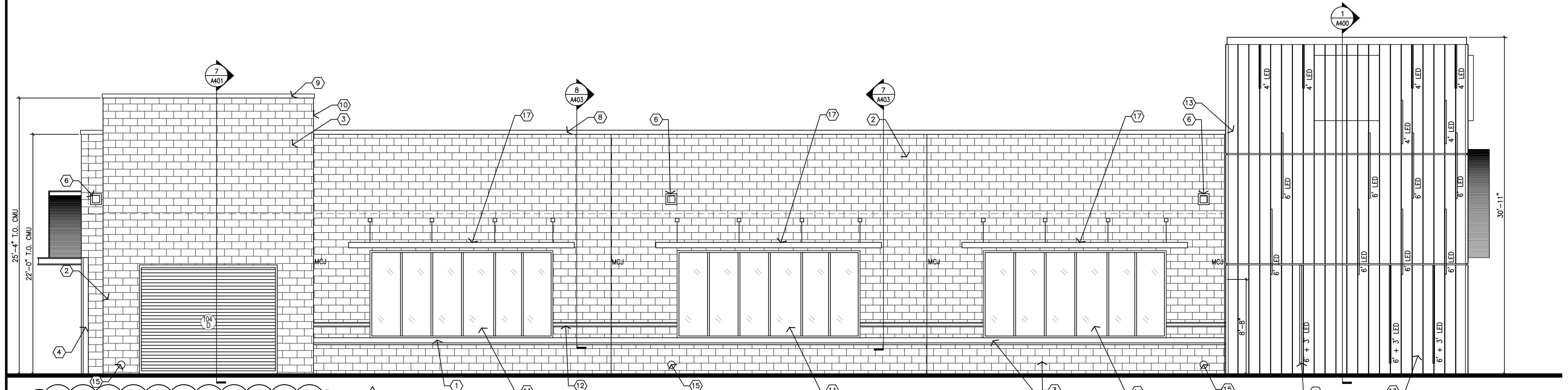
1 NORTH ELEVATION
SCALE: 3/16" = 1'-0"



2 EAST ELEVATION (UNIVERSITY PARKWAY)
SCALE: 3/16" = 1'-0"



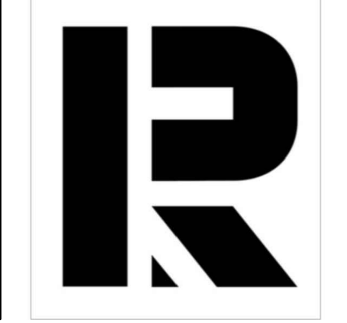
4 WEST ELEVATION
SCALE: 3/16" = 1'-0"



3 SOUTH ELEVATION (SUNBURST CIR.)
SCALE: 3/16" = 1'-0"

- ### ELEVATION KEYNOTES
- 1 PRECAST CONC WATERTABLE
 - 2 8 X 8 X 16 SMOOTH FACE CMU W/ DRYBLOC ADDITIVE, LIGHT GRAY COLOR
 - 3 4 X 8 X 16 SPLIT FACE CMU VENEER W/ DRYBLOC ADDITIVE, DARK GRAY COLOR
 - 4 STEEL TUBE FRAME AT OVERHEAD DOORS, PAINT
 - 5 MECHANICALLY FASTENED 0.045" THICK TPO MEMBRANE ROOF SYSTEM, WHITE
 - 6 .050 X 8"W X 8"H PARAPET OPENING WITH PRE-FINISHED ALUM METAL COLLAR (2" W X 1" PROJ) BRONZE ANODIZED FINISH
 - 7 CENTRIA PRE-FINISHED ALUMINUM CONCEALED FASTENER SIDING COMPLETE W/ DRIP FLASHING AND CLOSURES, MATCH SW COLOR #9177, SALTY DOG
 - 8 PREFORMED PRE-FINISHED ALUM. COPING WITH BAKED ENAMEL FINISH AND CONT. HOLD DOWN CLIPS ON BOTH SIDES OF THE PARAPET
 - 9 PREFORMED PRE-FINISHED ALUM. BAKED ENAMEL FINISH AND CONT. HOLD DOWN CLIPS ON FRONT SIDE OF PARAPET
 - 10 EXPOSED SIDEWALL AT TOWER TO RECEIVE JAMES HARDIE FIBER CEMENT ARTISAN V GROOVE SIDING, 8.25" X12" PRIMED, PAINT TO MATCH 4 X 8 X 16 SPLIT FACE CMU VENEER W/ DRYBLOC ADDITIVE, DARK GRAY COLOR. SEALANT BETWEEN CMU AND SIDING
 - 11 FAUX WINDOW
 - 12 SIDEWALL GRAPHIC STRIP FURNISHED BY OWNER INSTALLED BY CONTR
 - 13 THIS TOWER IS FORMED OF PREFINISHED ALUMINUM SIDING ON ALUM ANGLE FRAMING BRACED BACK TO THE CMU WALL FURNISHED BY OWNER INSTALLED BY CONTR
 - 14 LED STRIP LIGHTS, FURNISHED BY OWNER INSTALLED AND CONNECTED BY CONTR. LENGTH NOTED
 - 15 6" DIA PVC DOWNSPOUT, RELEASE MIN 6" ABOVE GRADE
 - 16 TOWER BEYOND
 - 17 METAL AWNING
- ### GENERAL NOTES
- A. CONTRACTOR TO COORDINATE WITH FIRE MARSHALL FOR REQUIREMENTS OF ADDRESS NUMBER.
 - B. BUILDING SIGNAGE UNDER SEPARATE PERMIT. CONTRACTOR TO OBTAIN FINAL SIGNAGE DRAWINGS FOR CONFIRMATION OF ELECTRICAL ROUGH-IN PRIOR TO THE COMMENCEMENT OF WORK. SEE ELECTRICAL.
 - C. REFER TO E-4 FOR SECURITY PLAN. COORDINATE FINAL LOCATIONS OF CAMERAS WITH THE OWNER PRIOR TO THE COMMENCEMENT OF WORK.
 - G. UNLESS NOTED OTHERWISE, MASONRY CONTROL JOINTS SHALL BE LOCATED SUCH THAT NO STRAIGHT RUN OF MASONRY WALL EXCEEDS 24' -0". REFER TO GENERAL STRUCTURAL NOTES ON S100.
 - F. REFER TO DOOR AND WINDOW SCHEDULE ON A500 FOR DOOR AND FRAME FINISHES AND WINDOW GLASS TYPE AND FRAME FINISHES.

ICWG- WINSTON-SALEM
 FOR
DRIVEN BRANDS
 SIMPSON CRE-UNIVERSITY
 WINSTON-SALEM, NC



SEALS

REVISIONS
REV 01 PLANNING COMMENTS 07/28/21

DATE
07/27/2021

SHEET NAME
ELEVATIONS

SHEET NUMBER
A-200