



PROPOSED CITY OF WINSTON-SALEM  
**ANNUAL BUDGET**  
2025-2026

# FISCAL YEAR 2025-26 BUDGET ADOPTION

**JUNE 16, 2025**

# FY 2025-26 PROPOSED BUDGET PRIORITIES



Continuing to Become an Employer of Choice



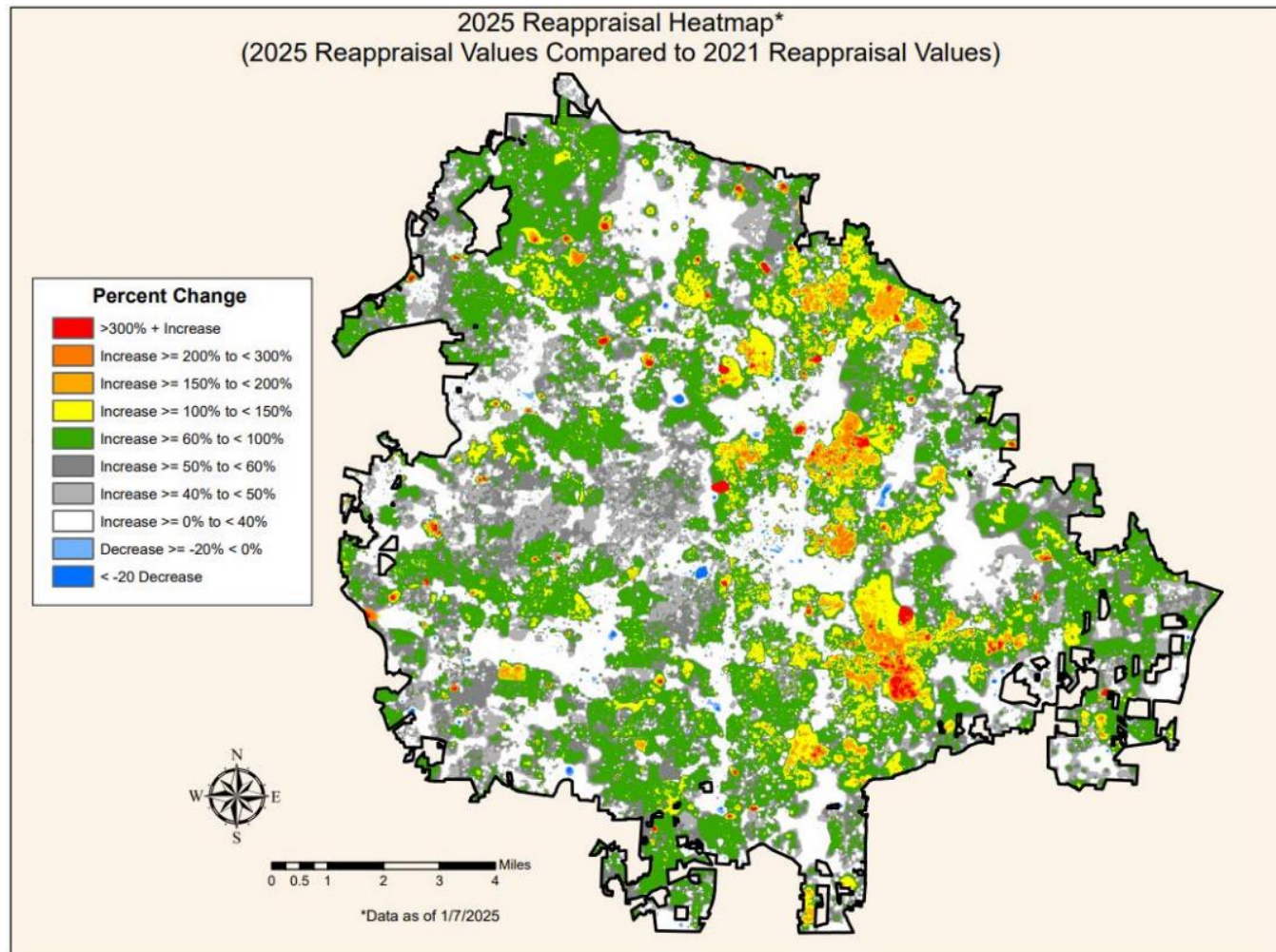
Maintaining Current Service Levels



Strengthening Financial Position



Finishing Currently-Funded Capital Projects



# 2025 REAL PROPERTY REVALUATION

<u>Property Type</u>	<u>Value % Increase</u>
Residential	61%
Commerical	35%
Industrial	27%
<b>Total</b>	<b>51%</b>

\*Heat map from Forsyth County Tax Office presentation (2/4/25)

# REDUCTIONS FROM THE PROPOSED BUDGET

<u>Budget Category</u>	<u>Amount</u>	<u>Tax Rate Equivalent</u>
<b>GENERAL FUND</b>		
Salary and Benefits Reductions	\$1,800,000	0.47
Convention Center Subsidy	100,000	0.03
<b>General Fund Subtotal</b>	<b>\$1,900,000</b>	<b>0.50</b>
<b>TRANSIT FUND</b>		
Transit Service Reductions	\$1,300,000	0.30
<b>Transit Fund Subtotal</b>	<b>\$1,300,000</b>	<b>0.30</b>
<b>GRAND TOTAL</b>	<b>\$3,200,000</b>	<b>0.80</b>

*\*Ordinances for adoption reflect actual amounts to account for rounding errors.*

# PROPERTY TAX RATE COMPARED TO REVENUE NEUTRAL FOR MEDIAN VALUE<sup>1</sup> HOMEOWNER

TABLE ILLUSTRATES PROPOSED  
TAX RATE REDUCED BY 0.8 CENTS  
TO 56.7 CENTS

<sup>1</sup>MEDIAN CITY HOME VALUE: \$232,800

## Revenue Neutral Compared to Four Cents Above Revenue Neutral

<u>Tax/Fee Type</u>	<u>Revenue Neutral (52.7 Cents)</u>	<u>Recommended (56.7 Cents)</u>	<u>Difference</u>	<u>Percentage</u>
Property Taxes	\$1,227	\$1,320	\$93	7.6%

- City monthly tax increase above revenue neutral - \$7.75
- County monthly tax increase above revenue neutral - \$9.98\*

*\*As reported in Winston-Salem Journal*

# CITY MAJOR TAXES AND FEES COMPARISON

- USES RECOMMENDED PROPERTY TAX RATE (56.7 CENTS) FOR WINSTON-SALEM
- USES PROPOSED BUDGET AMOUNTS FOR OTHER ALL CITIES

Annual Taxes and Fees  
Recommended FY 2025-26 Rates

