

PLANNING DEPARTMENT/REVIEW OFFICER
FINAL SUBDIVISION PLAT APPROVAL
 THIS IS TO CERTIFY THAT THIS PLAT MEETS THE REQUIREMENTS OF THE UNITED DEPARTMENT ORDINANCE SUBDIVISION REGULATIONS FOR VILLAGES/FORSTH COUNTY.

REVIEW OFFICER OF FORSTH COUNTY
 CERTIFY THAT THE MAP OR PLAT TO WHICH THIS CERTIFICATION IS AFFIXED MEETS ALL STATUTORY REQUIREMENTS FOR RECORDING.

APPROVED _____
 DIRECTOR OF PLANNING/SURVEY OFFICER

THIS DAY OF _____ 2020
 NORTH CAROLINA - FORSTH COUNTY

SURVEYOR CERTIFICATION
FOR CLOSURE
 I, THOMAS A. RICKO, CERTIFY THAT THIS PLAT WAS DRAWN UNDER MY SUPERVISION FROM AN ACTUAL SURVEY MADE UNDER MY SUPERVISION (DESCRIPTION RECORDED IN DEED BOOK - PAGE OR PLAT BOOK - PAGE - IF APPLICABLE) THAT THE RATIO OF PRECISION AS CALCULATED IS 1:10,000 THAT THIS PLAT WAS PREPARED IN ACCORDANCE WITH G.S. 47-20 AS AMENDED. ORIGINAL SIGNATURE, REGISTRATION NUMBER AND SEAL.

SIGNATURE: *Thomas A. Ricko*
 SURVEYOR REGISTRATION NUMBER: 21815

THIS THE _____ DAY OF _____ 2020
 FORSTH COUNTY, NORTH CAROLINA.

SURVEYOR CERTIFICATION
FOR SUBDIVISION
 I, THOMAS A. RICKO, PROFESSIONAL LAND SURVEYOR, NUMBER 1-2815, CERTIFY TO THE FOLLOWING:
 THAT THIS PLAT IS OF A SURVEY THAT CREATED A SUBDIVISION OF LAND WITHIN THE AREA OF A COUNTY OR JURISDICTION THAT HAS AN ORDINANCE THAT REGULATES PARCELS OF LAND.

SIGNATURE: *Thomas A. Ricko*
 SURVEYOR REGISTRATION NUMBER: 1-2815

THE UNDERSIGNED HEREBY ACKNOWLEDGE THAT I AM THE ONLY SURVEYOR WHO HAS PREPARED THIS PLAT AND SUBDIVISION WITHIN THE AREA OF A COUNTY OR JURISDICTION THAT HAS AN ORDINANCE THAT REGULATES PARCELS OF LAND. I HAVE BEEN AWARE OF THE EXISTENCE OF SUCH AN ORDINANCE AT THE TIME OF THE RECORDING OF THIS PLAT IN THE OFFICE OF THE REGISTER OF DEEDS OF FORSTH COUNTY.

DATE: _____ TIME: _____

DATE: _____ TIME: _____



FORSTH COUNTY REGISTER OF DEEDS
PLAT REGISTRATION
 FILED FOR REGISTRATION AT _____ O'CLOCK _____ M.
 THIS THE _____ DAY OF _____ 2020
 AND RECORDED IN PLAT BOOK _____ PAGE _____
 FILING FEE PAID: TWENTY-ONE DOLLAR
 LYDNE JOHNSON, REGISTER OF DEEDS
 BY _____
 ASSISTANT/DEPUTY
 FORSTH COUNTY, NORTH CAROLINA

AREA = 66.39311 ACRES
 BY COORDINATE COMPUTATION

SURVEY PREPARED FOR
CLEAN WATER MANAGEMENT TRUST FUND
 SHOWING TAX LOTS 106A, 106B, 610A, 610C, 610D, 610E, 610G AND PARTS OF TAX LOTS 910E AND 912 OF TAX BLOCK 4975 WINSTON-FORSTH COUNTY - NORTH CAROLINA DATE: MAY 12TH 2021 DRAWING NUMBER: 21808

GRAPHIC SCALE = FEET ONE INCH EQUALS 100 FEET

DRAWN BY: _____
 CHECKED BY: _____
THOMAS A. RICKO AND ASSOCIATES
 445 WEST 4TH BOULEVARD
 WINSTON-SALEM, NORTH CAROLINA 27101
 770-772-9211
 TRICKOANDRICKO@AOL.COM
 SHEET TWO OF THREE

- LEGEND**
- 1" = 100'
 - 1" = 200'
 - 1" = 300'
 - 1" = 400'
 - 1" = 500'
 - 1" = 600'
 - 1" = 700'
 - 1" = 800'
 - 1" = 900'
 - 1" = 1000'
 - 1" = 1100'
 - 1" = 1200'
 - 1" = 1300'
 - 1" = 1400'
 - 1" = 1500'
 - 1" = 1600'
 - 1" = 1700'
 - 1" = 1800'
 - 1" = 1900'
 - 1" = 2000'
 - 1" = 2200'
 - 1" = 2400'
 - 1" = 2600'
 - 1" = 2800'
 - 1" = 3000'
 - 1" = 3200'
 - 1" = 3400'
 - 1" = 3600'
 - 1" = 3800'
 - 1" = 4000'
 - 1" = 4200'
 - 1" = 4400'
 - 1" = 4600'
 - 1" = 4800'
 - 1" = 5000'
 - 1" = 5200'
 - 1" = 5400'
 - 1" = 5600'
 - 1" = 5800'
 - 1" = 6000'
 - 1" = 6200'
 - 1" = 6400'
 - 1" = 6600'
 - 1" = 6800'
 - 1" = 7000'
 - 1" = 7200'
 - 1" = 7400'
 - 1" = 7600'
 - 1" = 7800'
 - 1" = 8000'
 - 1" = 8200'
 - 1" = 8400'
 - 1" = 8600'
 - 1" = 8800'
 - 1" = 9000'
 - 1" = 9200'
 - 1" = 9400'
 - 1" = 9600'
 - 1" = 9800'
 - 1" = 10000'
 - 1" = 10200'
 - 1" = 10400'
 - 1" = 10600'
 - 1" = 10800'
 - 1" = 11000'
 - 1" = 11200'
 - 1" = 11400'
 - 1" = 11600'
 - 1" = 11800'
 - 1" = 12000'
 - 1" = 12200'
 - 1" = 12400'
 - 1" = 12600'
 - 1" = 12800'
 - 1" = 13000'
 - 1" = 13200'
 - 1" = 13400'
 - 1" = 13600'
 - 1" = 13800'
 - 1" = 14000'
 - 1" = 14200'
 - 1" = 14400'
 - 1" = 14600'
 - 1" = 14800'
 - 1" = 15000'
 - 1" = 15200'
 - 1" = 15400'
 - 1" = 15600'
 - 1" = 15800'
 - 1" = 16000'
 - 1" = 16200'
 - 1" = 16400'
 - 1" = 16600'
 - 1" = 16800'
 - 1" = 17000'
 - 1" = 17200'
 - 1" = 17400'
 - 1" = 17600'
 - 1" = 17800'
 - 1" = 18000'
 - 1" = 18200'
 - 1" = 18400'
 - 1" = 18600'
 - 1" = 18800'
 - 1" = 19000'
 - 1" = 19200'
 - 1" = 19400'
 - 1" = 19600'
 - 1" = 19800'
 - 1" = 20000'
 - 1" = 20200'
 - 1" = 20400'
 - 1" = 20600'
 - 1" = 20800'
 - 1" = 21000'
 - 1" = 21200'
 - 1" = 21400'
 - 1" = 21600'
 - 1" = 21800'
 - 1" = 22000'
 - 1" = 22200'
 - 1" = 22400'
 - 1" = 22600'
 - 1" = 22800'
 - 1" = 23000'
 - 1" = 23200'
 - 1" = 23400'
 - 1" = 23600'
 - 1" = 23800'
 - 1" = 24000'
 - 1" = 24200'
 - 1" = 24400'
 - 1" = 24600'
 - 1" = 24800'
 - 1" = 25000'
 - 1" = 25200'
 - 1" = 25400'
 - 1" = 25600'
 - 1" = 25800'
 - 1" = 26000'
 - 1" = 26200'
 - 1" = 26400'
 - 1" = 26600'
 - 1" = 26800'
 - 1" = 27000'
 - 1" = 27200'
 - 1" = 27400'
 - 1" = 27600'
 - 1" = 27800'
 - 1" = 28000'
 - 1" = 28200'
 - 1" = 28400'
 - 1" = 28600'
 - 1" = 28800'
 - 1" = 29000'
 - 1" = 29200'
 - 1" = 29400'
 - 1" = 29600'
 - 1" = 29800'
 - 1" = 30000'
 - 1" = 30200'
 - 1" = 30400'
 - 1" = 30600'
 - 1" = 30800'
 - 1" = 31000'
 - 1" = 31200'
 - 1" = 31400'
 - 1" = 31600'
 - 1" = 31800'
 - 1" = 32000'
 - 1" = 32200'
 - 1" = 32400'
 - 1" = 32600'
 - 1" = 32800'
 - 1" = 33000'
 - 1" = 33200'
 - 1" = 33400'
 - 1" = 33600'
 - 1" = 33800'
 - 1" = 34000'
 - 1" = 34200'
 - 1" = 34400'
 - 1" = 34600'
 - 1" = 34800'
 - 1" = 35000'
 - 1" = 35200'
 - 1" = 35400'
 - 1" = 35600'
 - 1" = 35800'
 - 1" = 36000'
 - 1" = 36200'
 - 1" = 36400'
 - 1" = 36600'
 - 1" = 36800'
 - 1" = 37000'
 - 1" = 37200'
 - 1" = 37400'
 - 1" = 37600'
 - 1" = 37800'
 - 1" = 38000'
 - 1" = 38200'
 - 1" = 38400'
 - 1" = 38600'
 - 1" = 38800'
 - 1" = 39000'
 - 1" = 39200'
 - 1" = 39400'
 - 1" = 39600'
 - 1" = 39800'
 - 1" = 40000'
 - 1" = 40200'
 - 1" = 40400'
 - 1" = 40600'
 - 1" = 40800'
 - 1" = 41000'
 - 1" = 41200'
 - 1" = 41400'
 - 1" = 41600'
 - 1" = 41800'
 - 1" = 42000'
 - 1" = 42200'
 - 1" = 42400'
 - 1" = 42600'
 - 1" = 42800'
 - 1" = 43000'
 - 1" = 43200'
 - 1" = 43400'
 - 1" = 43600'
 - 1" = 43800'
 - 1" = 44000'
 - 1" = 44200'
 - 1" = 44400'
 - 1" = 44600'
 - 1" = 44800'
 - 1" = 45000'
 - 1" = 45200'
 - 1" = 45400'
 - 1" = 45600'
 - 1" = 45800'
 - 1" = 46000'
 - 1" = 46200'
 - 1" = 46400'
 - 1" = 46600'
 - 1" = 46800'
 - 1" = 47000'
 - 1" = 47200'
 - 1" = 47400'
 - 1" = 47600'
 - 1" = 47800'
 - 1" = 48000'
 - 1" = 48200'
 - 1" = 48400'
 - 1" = 48600'
 - 1" = 48800'
 - 1" = 49000'
 - 1" = 49200'
 - 1" = 49400'
 - 1" = 49600'
 - 1" = 49800'
 - 1" = 50000'
 - 1" = 50200'
 - 1" = 50400'
 - 1" = 50600'
 - 1" = 50800'
 - 1" = 51000'
 - 1" = 51200'
 - 1" = 51400'
 - 1" = 51600'
 - 1" = 51800'
 - 1" = 52000'
 - 1" = 52200'
 - 1" = 52400'
 - 1" = 52600'
 - 1" = 52800'
 - 1" = 53000'
 - 1" = 53200'
 - 1" = 53400'
 - 1" = 53600'
 - 1" = 53800'
 - 1" = 54000'
 - 1" = 54200'
 - 1" = 54400'
 - 1" = 54600'
 - 1" = 54800'
 - 1" = 55000'
 - 1" = 55200'
 - 1" = 55400'
 - 1" = 55600'
 - 1" = 55800'
 - 1" = 56000'
 - 1" = 56200'
 - 1" = 56400'
 - 1" = 56600'
 - 1" = 56800'
 - 1" = 57000'
 - 1" = 57200'
 - 1" = 57400'
 - 1" = 57600'
 - 1" = 57800'
 - 1" = 58000'
 - 1" = 58200'
 - 1" = 58400'
 - 1" = 58600'
 - 1" = 58800'
 - 1" = 59000'
 - 1" = 59200'
 - 1" = 59400'
 - 1" = 59600'
 - 1" = 59800'
 - 1" = 60000'
 - 1" = 60200'
 - 1" = 60400'
 - 1" = 60600'
 - 1" = 60800'
 - 1" = 61000'
 - 1" = 61200'
 - 1" = 61400'
 - 1" = 61600'
 - 1" = 61800'
 - 1" = 62000'
 - 1" = 62200'
 - 1" = 62400'
 - 1" = 62600'
 - 1" = 62800'
 - 1" = 63000'
 - 1" = 63200'
 - 1" = 63400'
 - 1" = 63600'
 - 1" = 63800'
 - 1" = 64000'
 - 1" = 64200'
 - 1" = 64400'
 - 1" = 64600'
 - 1" = 64800'
 - 1" = 65000'
 - 1" = 65200'
 - 1" = 65400'
 - 1" = 65600'
 - 1" = 65800'
 - 1" = 66000'
 - 1" = 66200'
 - 1" = 66400'
 - 1" = 66600'
 - 1" = 66800'
 - 1" = 67000'
 - 1" = 67200'
 - 1" = 67400'
 - 1" = 67600'
 - 1" = 67800'
 - 1" = 68000'
 - 1" = 68200'
 - 1" = 68400'
 - 1" = 68600'
 - 1" = 68800'
 - 1" = 69000'
 - 1" = 69200'
 - 1" = 69400'
 - 1" = 69600'
 - 1" = 69800'
 - 1" = 70000'
 - 1" = 70200'
 - 1" = 70400'
 - 1" = 70600'
 - 1" = 70800'
 - 1" = 71000'
 - 1" = 71200'
 - 1" = 71400'
 - 1" = 71600'
 - 1" = 71800'
 - 1" = 72000'
 - 1" = 72200'
 - 1" = 72400'
 - 1" = 72600'
 - 1" = 72800'
 - 1" = 73000'
 - 1" = 73200'
 - 1" = 73400'
 - 1" = 73600'
 - 1" = 73800'
 - 1" = 74000'
 - 1" = 74200'
 - 1" = 74400'
 - 1" = 74600'
 - 1" = 74800'
 - 1" = 75000'
 - 1" = 75200'
 - 1" = 75400'
 - 1" = 75600'
 - 1" = 75800'
 - 1" = 76000'
 - 1" = 76200'
 - 1" = 76400'
 - 1" = 76600'
 - 1" = 76800'
 - 1" = 77000'
 - 1" = 77200'
 - 1" = 77400'
 - 1" = 77600'
 - 1" = 77800'
 - 1" = 78000'
 - 1" = 78200'
 - 1" = 78400'
 - 1" = 78600'
 - 1" = 78800'
 - 1" = 79000'
 - 1" = 79200'
 - 1" = 79400'
 - 1" = 79600'
 - 1" = 79800'
 - 1" = 80000'
 - 1" = 80200'
 - 1" = 80400'
 - 1" = 80600'
 - 1" = 80800'
 - 1" = 81000'
 - 1" = 81200'
 - 1" = 81400'
 - 1" = 81600'
 - 1" = 81800'
 - 1" = 82000'
 - 1" = 82200'
 - 1" = 82400'
 - 1" = 82600'
 - 1" = 82800'
 - 1" = 83000'
 - 1" = 83200'
 - 1" = 83400'
 - 1" = 83600'
 - 1" = 83800'
 - 1" = 84000'
 - 1" = 84200'
 - 1" = 84400'
 - 1" = 84600'
 - 1" = 84800'
 - 1" = 85000'
 - 1" = 85200'
 - 1" = 85400'
 - 1" = 85600'
 - 1" = 85800'
 - 1" = 86000'
 - 1" = 86200'
 - 1" = 86400'
 - 1" = 86600'
 - 1" = 86800'
 - 1" = 87000'
 - 1" = 87200'
 - 1" = 87400'
 - 1" = 87600'
 - 1" = 87800'
 - 1" = 88000'
 - 1" = 88200'
 - 1" = 88400'
 - 1" = 88600'
 - 1" = 88800'
 - 1" = 89000'
 - 1" = 89200'
 - 1" = 89400'
 - 1" = 89600'
 - 1" = 89800'
 - 1" = 90000'
 - 1" = 90200'
 - 1" = 90400'
 - 1" = 90600'
 - 1" = 90800'
 - 1" = 91000'
 - 1" = 91200'
 - 1" = 91400'
 - 1" = 91600'
 - 1" = 91800'
 - 1" = 92000'
 - 1" = 92200'
 - 1" = 92400'
 - 1" = 92600'
 - 1" = 92800'
 - 1" = 93000'
 - 1" = 93200'
 - 1" = 93400'
 - 1" = 93600'
 - 1" = 93800'
 - 1" = 94000'
 - 1" = 94200'
 - 1" = 94400'
 - 1" = 94600'
 - 1" = 94800'
 - 1" = 95000'
 - 1" = 95200'
 - 1" = 95400'
 - 1" = 95600'
 - 1" = 95800'
 - 1" = 96000'
 - 1" = 96200'
 - 1" = 96400'
 - 1" = 96600'
 - 1" = 96800'
 - 1" = 97000'
 - 1" = 97200'
 - 1" = 97400'
 - 1" = 97600'
 - 1" = 97800'
 - 1" = 98000'
 - 1" = 98200'
 - 1" = 98400'
 - 1" = 98600'
 - 1" = 98800'
 - 1" = 99000'
 - 1" = 99200'
 - 1" = 99400'
 - 1" = 99600'
 - 1" = 99800'
 - 1" = 100000'

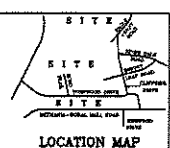
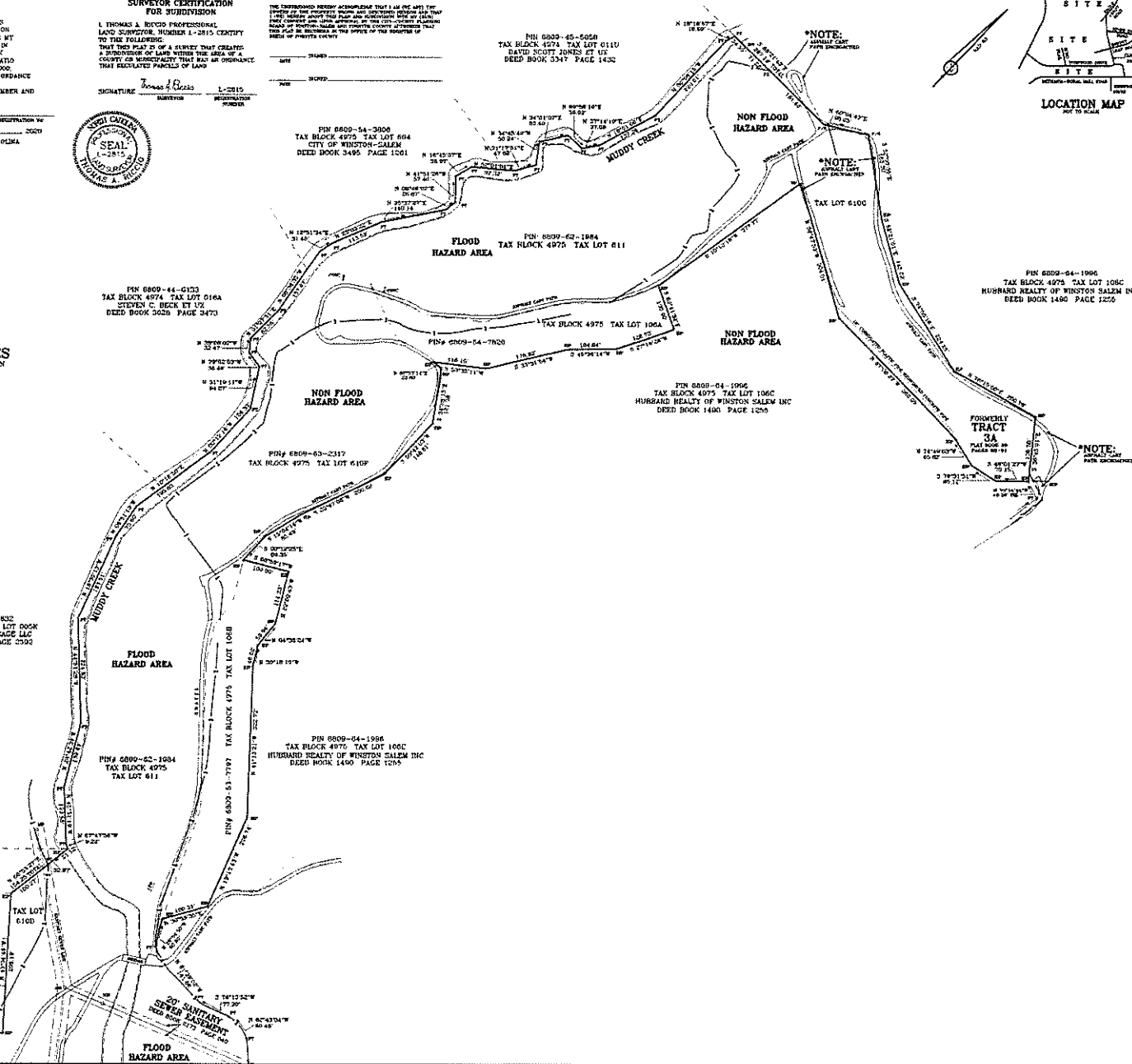
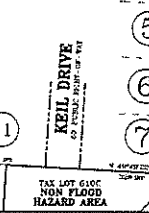


EXHIBIT C