



# **Winston-Salem Forsyth County Homeless Initiative Update**

---

Neighborhood Services Department  
Housing and Community Services Division

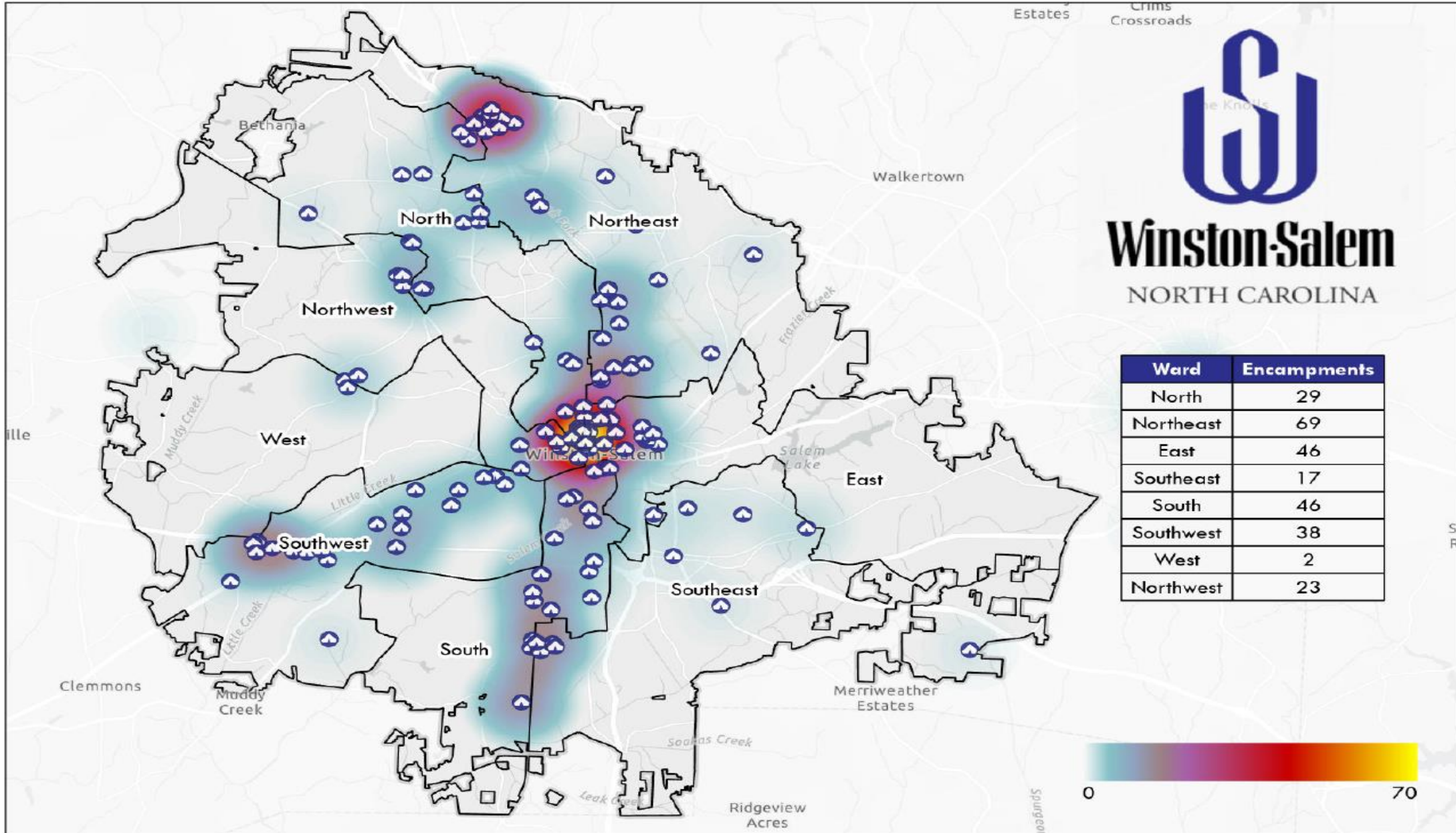
# Winston-Salem/Forsyth County Point in Time Count

The Point-in-Time (PIT) count is a count of sheltered and unsheltered people experiencing homelessness on a single night in January. HUD requires that CoCs conduct an annual count of people experiencing homelessness who are sheltered in emergency shelter, transitional housing, and Safe Havens on a single night. CoCs also must conduct a count of unsheltered people experiencing homelessness every other year (odd numbered years). Each count is planned, coordinated, and carried out locally.

HUD uses information from the local point-in-time counts across the country, among other data sources, to inform Congress about the number of people experiencing homelessness in the U.S. and the effectiveness of HUD's programs and policies in decreasing those numbers and it helps determine federal funding needs.

Our last Point in Time Count was held on January 31, 2024.



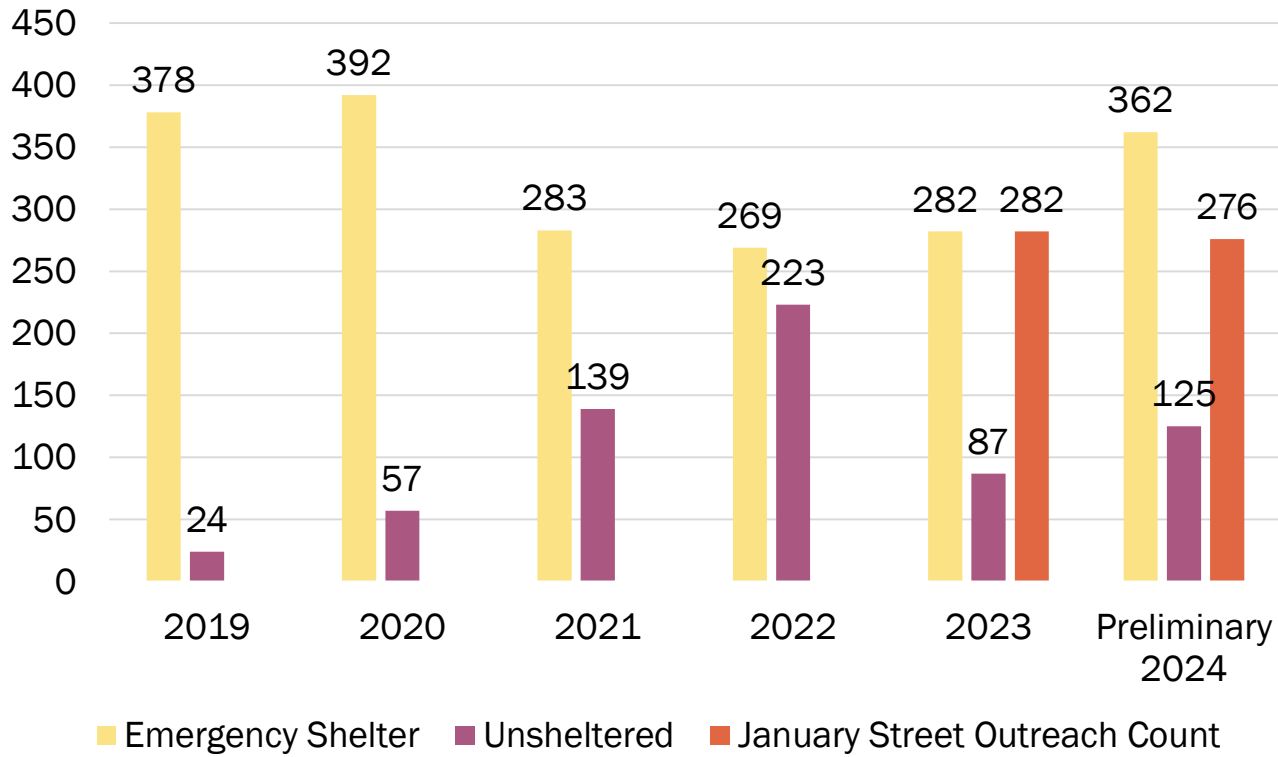


# ENCAMPMENT AREAS

**Map Disclaimer:**  
 This product is for informational purposes and may not have been prepared for, or be suitable for legal, engineering, or surveying purposes. All property boundaries are approximate and do not represent an on-the-ground survey. This product has been produced by the City of Winston-Salem Information Systems Department for the sole purpose of geographic reference. No warranties, expressed or implied, are made concerning the accuracy, completeness or suitability of this data.

# Sheltered Population vs. Unsheltered Population?

Point In Time Count: Sheltered and Unsheltered  
2019 - 2023



Despite the loss of some shelter capacity since the COVID 19 pandemic began, the number of people sheltered on PIT nights has stayed relatively consistent in the past few years.

According to current HMIS data, **276 people have connected to Street Outreach services so far in January alone.**

The size of the unsheltered population in Forsyth County is almost as big as the population of people staying in shelters.

# Summary of People Served

Data reflects the number of people served in Continuum of Care programs during the HUD calendar year of October - September

	2018 official	2019 official	2020 official	2021 official	2022 official	2023 official
Number of Households Served	1588	1608	1315	1030	1177	1240
Number of People Served	1996	1952	1632	1297	1491	1598
Avg Days Homeless	78	89	100	122	110	103
Rate of Exits to Permanent Housing	32%	37%	31%	37%	24%	20%

# City of Winston-Salem's Collaborative Team Approach



# Encampment Clean Up Process

Encampment is reported via Citylink, WSPD, or to Neighborhood Services.



Code enforcement visits the encampment and sites the encampment for trash violations.



Street outreach teams in partnership with BEAR arrives to the encampment within 72 hours to offer supportive services and emergency housing options.



Owners of the property are notified of citation issues by Code Enforcement via letter.



City and State-owned property no trespassing signs are posted. Depending on the cleanup, contractors are required to remove hazardous materials and large encampment areas.

Street outreach teams in partnership with BEAR returns to the encampment notifying individuals the encampment will be cleaned until the date of clean up.



Street outreach staff, code enforcement, and WSPD arrive the day of the encampment to initiate clean up. Additional services and referrals are provided to individuals who are interested.

# Current Funding Sources Used for Homeless Initiatives



---

**Continuum of Care Funds:  
HUD**

**Community Development  
Block Grant:  
HUD**

**Emergency Solutions Grant:  
HUD**

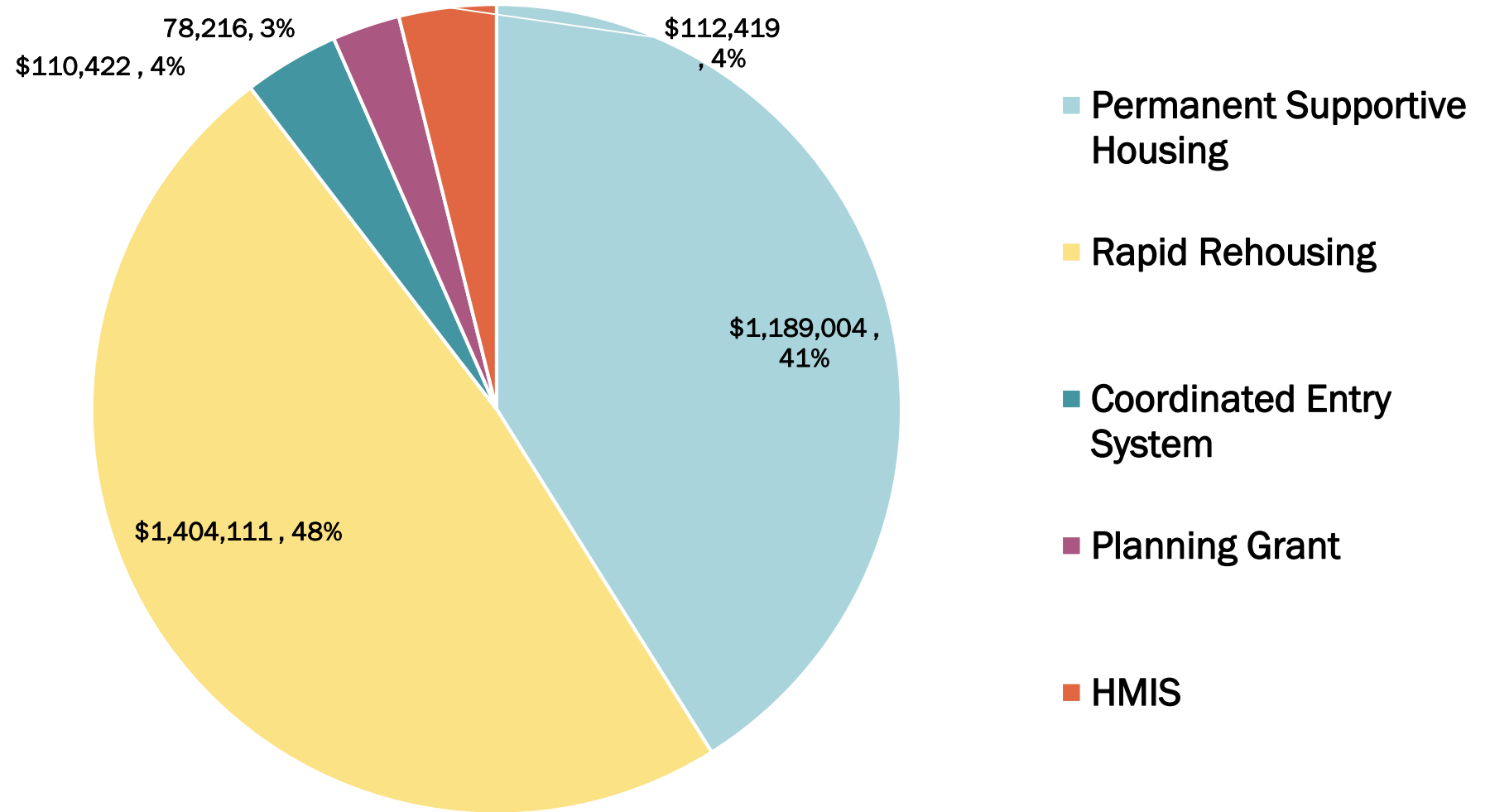
**NC Emergency Solutions Grant:  
HUD**



# Continuum of Care (CoC): HUD- \$2,894,172

## Eligible Activities:

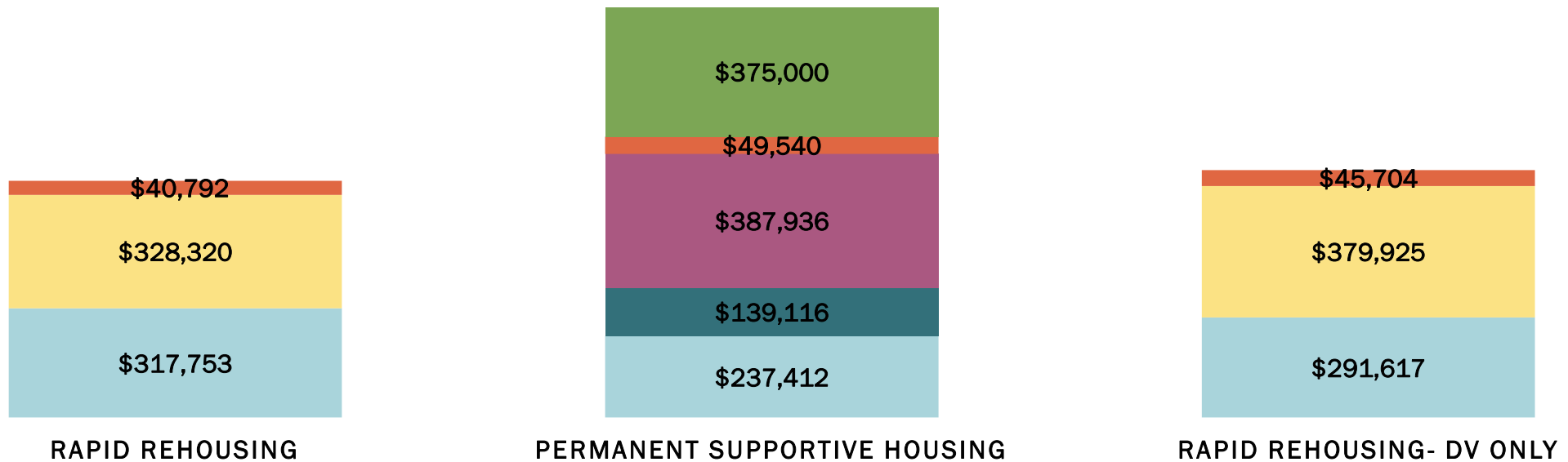
1. Acquisition
  2. Rehabilitation
  3. New Construction
  4. Leasing
  5. Rental Assistance
  6. Supportive Services
  7. Operating Costs
  8. HMIS
- Funds cannot be used for emergency shelter services.



# Calculation of CoC Rental Assistance Programs

■ Case Managers & Supportive Services  
■ Project Based Programs

■ Rental Assistance Costs  
■ Housing Choice Vouchers

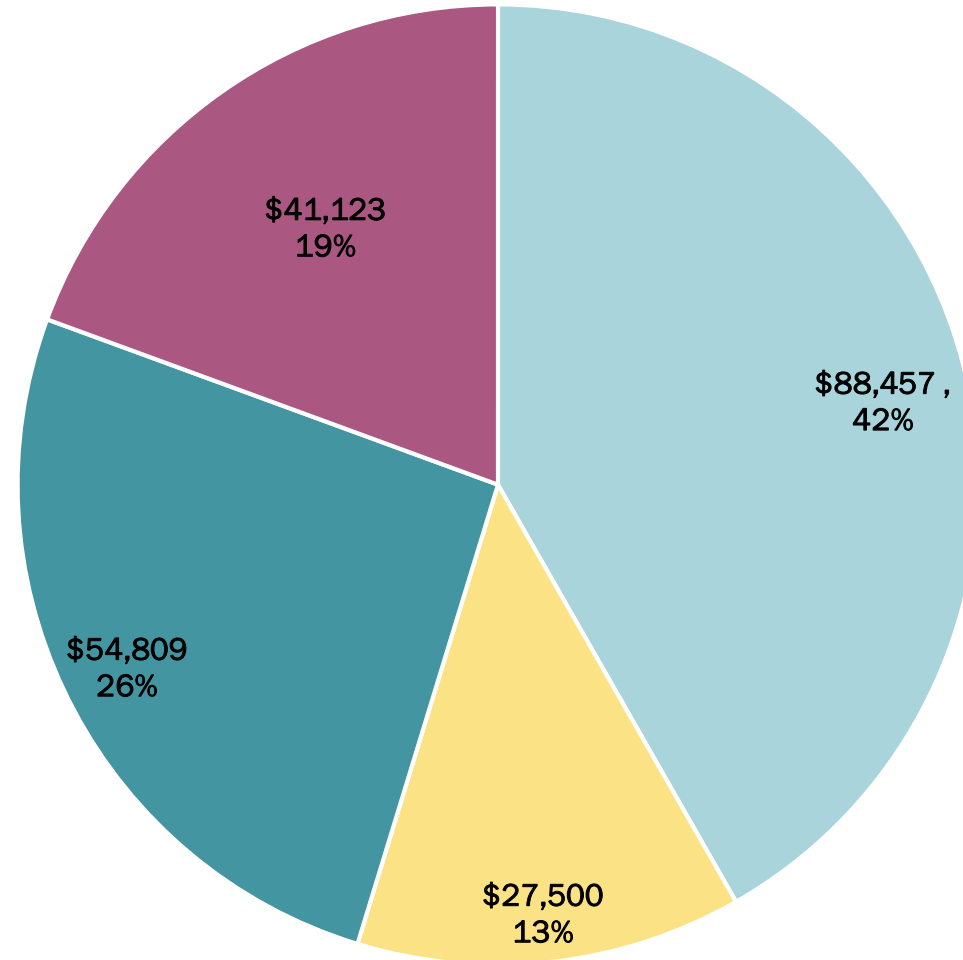


# NC Emergency Solutions Grant: HUD

## \$211,889

### Eligible Activities:

- Street Outreach
- Emergency Shelter
- Homeless Prevention
- Rapid Rehousing
- HMIS
- Admin
- \*Only 60% of funds can be use for shelter services and street outreach

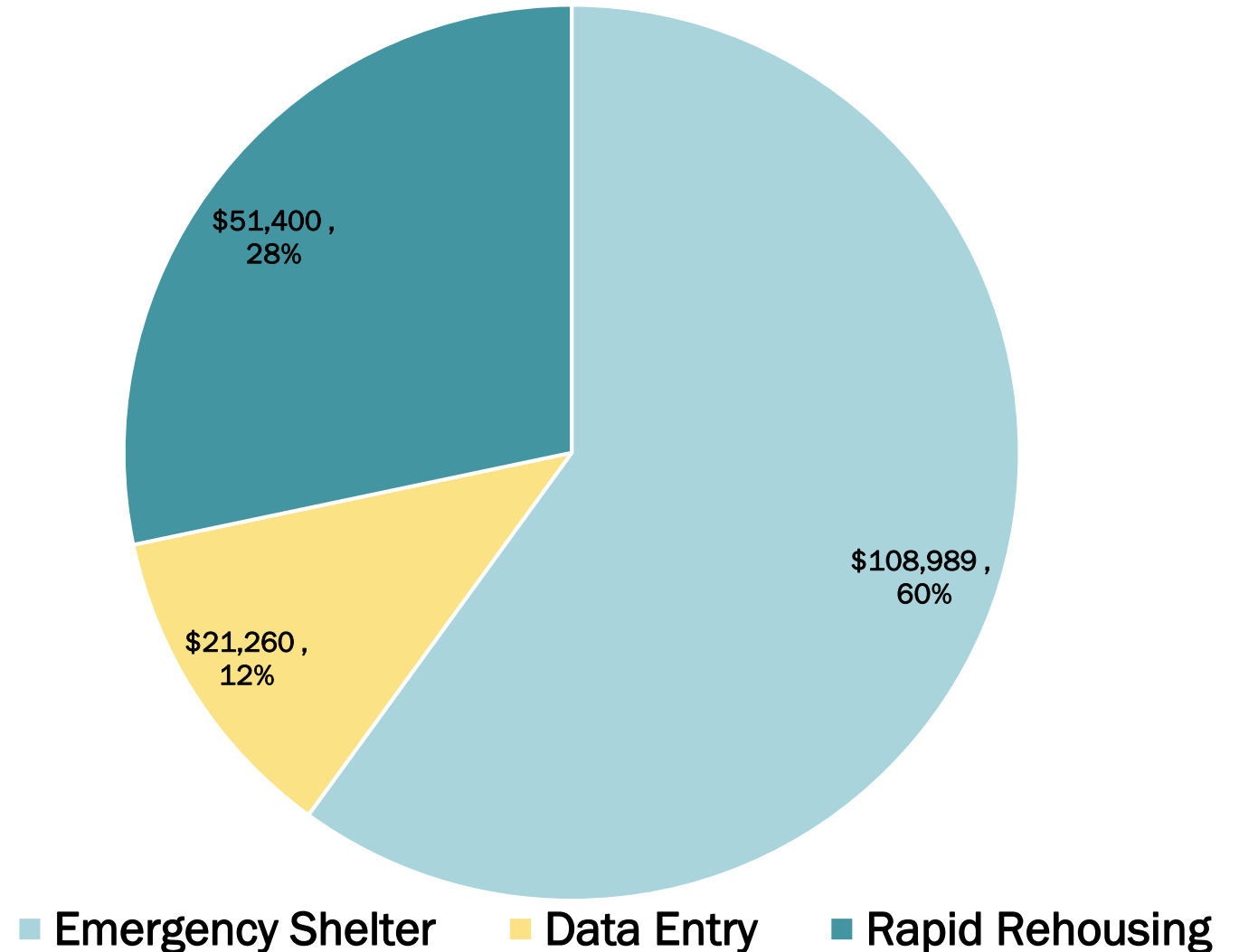


# Emergency Solutions Grant: HUD

## \$181,649

### Eligible Activities:

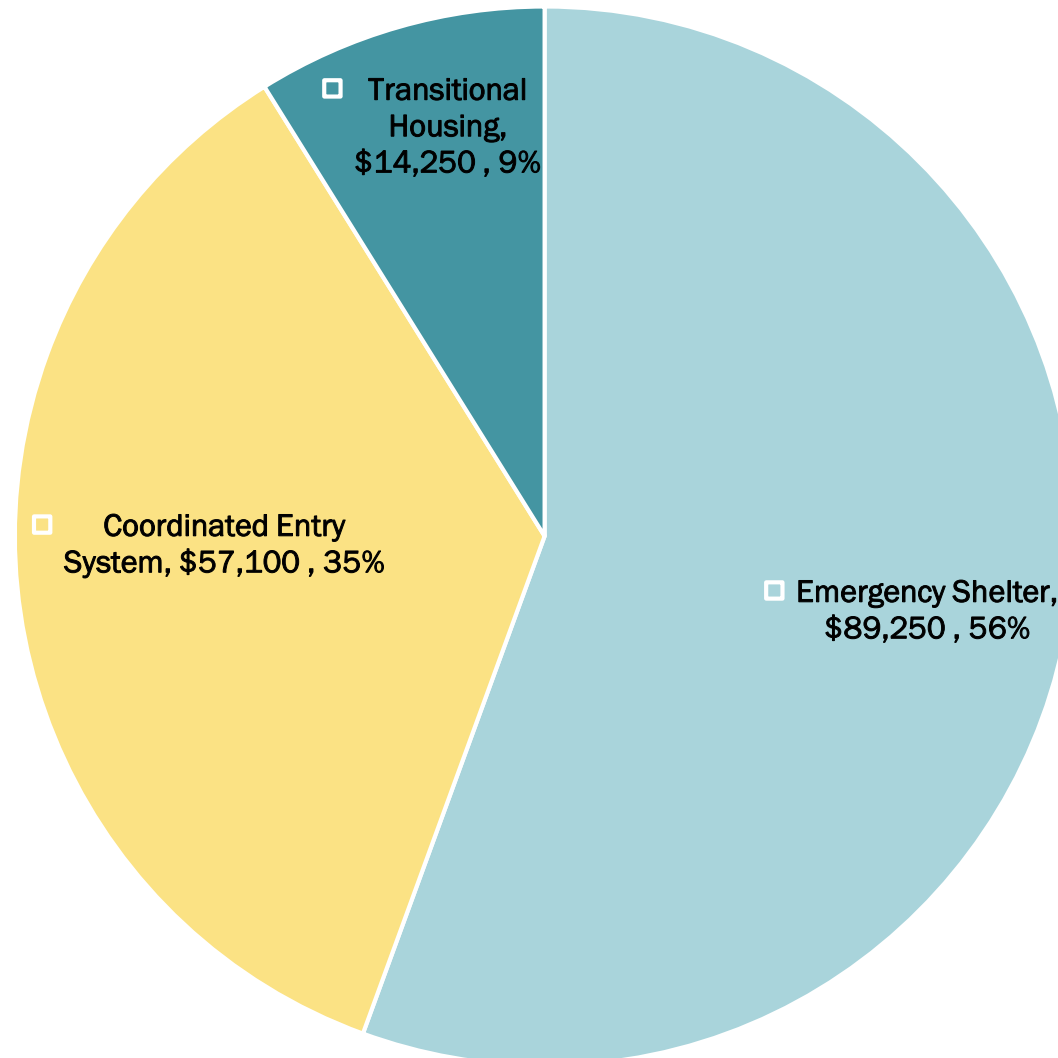
- Street Outreach
- Emergency Shelter
- Homeless Prevention
- Rapid Rehousing
- HMIS
- Admin
- \*Only 60% of funds can be used for shelter services and street outreach



# Community Development Block Grant- CDBG: HUD

## \$160,600

- CDBG Use:
- Public Facilities
- Public Services
- *15 percent cap on public services*



# Current Initiatives:

---

## Improve Coordinated Entry System Accessibility

- CES lead- United Way of Forsyth County
- Marketing
- 24 Hour Call Center

## Increase Affordable Housing for RRH & PSH Funds

- Increase project-based vouchers instead of housing choice vouchers.
- Improve landlord retention.
- Increase permanent housing opportunities with scattered sites.

## Increase and Develop Interim Housing

- Low barrier emergency shelters and day centers.
- Creating trauma informed environments in local shelters and day centers.

## Increase Available Supportive Services

- Connection to Novant Mobile Cruiser
- Contracted with local provider to provide mental health and substance abuse services to those living unsheltered. (COVID)

## Increase CoC Staff & Agency Capacity

- Increase training with a focus on trauma informed care and self care.
- Homeless Services job fair.
- Increase front line staff for intake and resources to eliminate bottlenecks.
- City street outreach positions.

## CoC Governance System Restructure

- Increase partnership and participation from agencies, advocates, County, and health care providers.
- Increase advocacy and action from CoC partners.

# Current Needs:



---

## Increase Local Agency Staff Capacity

- CoC wage study shows 60% of front-line staff earn below the living wage. (\$35,006.40 per year)

## Affordable Housing for RRH & PSH Funds

- Housing opportunities that will increase the ability for Rapid Rehousing & housing voucher funds to be spent.

## Homelessness Prevention Funding

- Unrestricted dollars to prevent households from becoming homeless.

## Increase and Development of Interim Housing

- Shelter opportunities for families and single women.
- Creation of non-congregate shelter options for those with high barriers and other unique options like safe parking.

## Supportive Services

- Strengthen relationship with Forsyth County (DSS, Behavioral Health).
- Increase in kind opportunities for mental health/substance abuse providers.
- Increase & strengthen wrap around services available for clients.

## Improve CES Accessibility

- Identify a CES lead.
- Identify a one stop location that can be used as a hub for services.



# Possible Solutions

---



# Rehab Existing City Owned Properties

- Existing City owned property.
- Rehab existing City owned homes or homes on the City's demolition list which are deemed to be viable.
- These homes will be used for affordable housing purposes and sold to interested nonprofits interested in the development and creation of affordable housing.
- These homes will be required to adhere to the City's Housing Justice Act & Affordable Housing Ordinance and be prioritized for households with income below 80%.
- **Rehab of this property was around \$75,000**



# Rehab Owner Occupied Properties

---



- 
- Owner is interested in rehab and will allow units to be used for permanent supportive housing or affordable housing.
  - All tenants will have assigned case managers through existing local agencies.
  - Prioritization will be given for households experiencing homelessness or recently who have experienced homelessness.
  - Owner will maintain ownership and will have to adhere to the City's Housing Justice Act on rent amounts.



# Purchase and Rehab

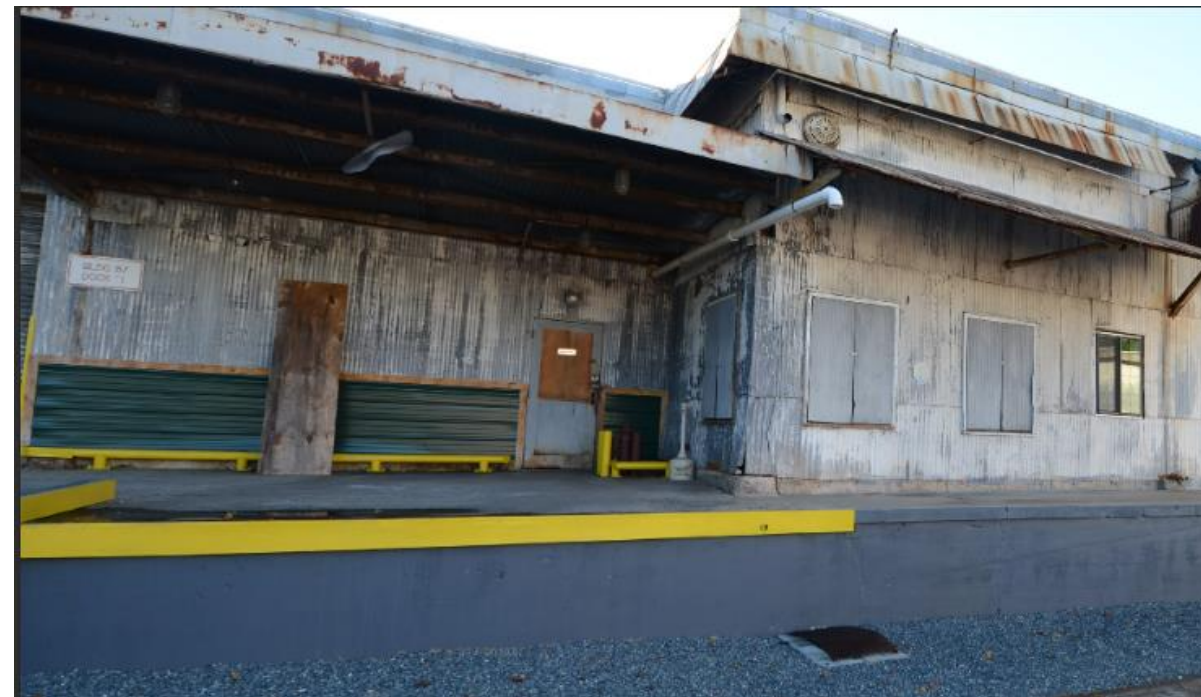
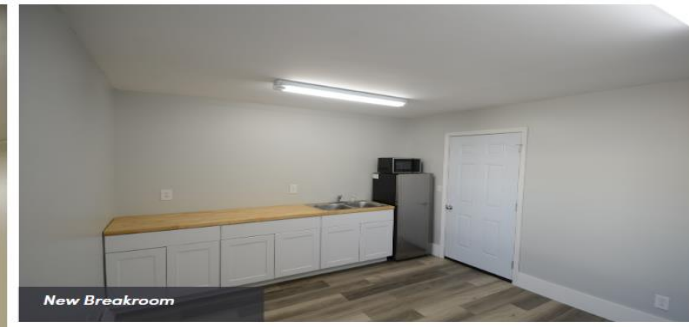


- 7,620 square feet building for sale
- Rezoning approved by City Council for multi family housing
- Existing floor designs available for multi-family housing

**\$483,000 - Acquisition**

# Convert Commercial Spaces

- Utilizing commercial spaces to increase residential opportunities.
- Conversion of hotels/motels, warehouses, schools, light industrial locations, retail, and other large spaces to create mixed use housing.
- 75,378 square feet
- Acquisition- \$1,795,000



# Cottage Homes

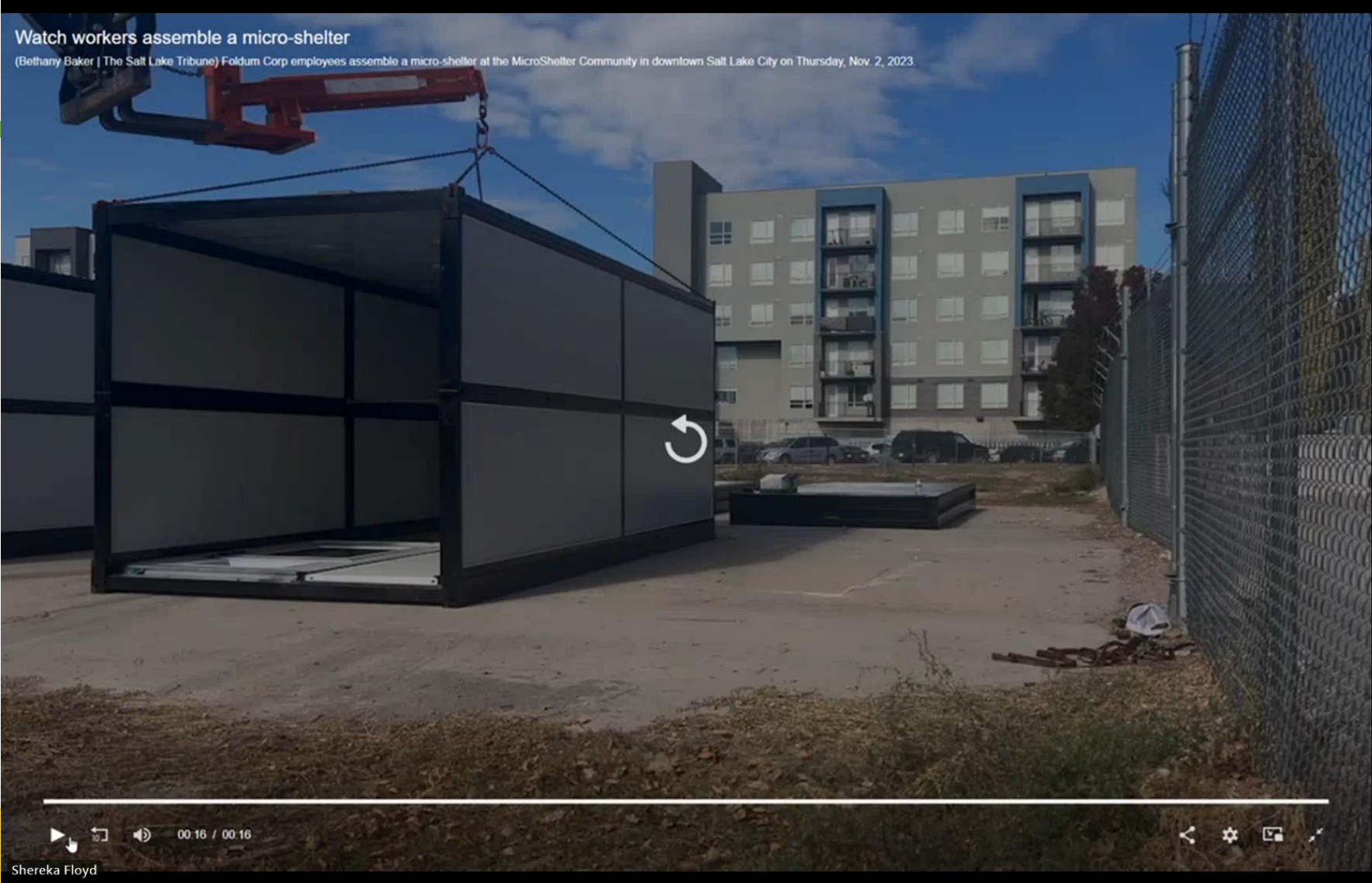
- Onsite services including onsite medical clinic including a community center.
- 2-year project located on abandoned mobile home park.
- Can quickly be built.
- Units in Wilmington are zoned for RV as they are under 400 square feet.



Eden Village  
Wilmington, North Carolina

# Micro Shelters

Watch workers assemble a micro-shelter  
(Bethany Baker | The Salt Lake Tribune) Foldum Corp employees assemble a micro-shelter at the MicroShelter Community in downtown Salt Lake City on Thursday, Nov. 2, 2023.



Shereka Floyd



Shereka Floyd

# Coordinated Intake Center

- Effective July new coordinated intake center lead. RFP currently out for operational staff.
- One stop center location.
- **\$2 million for acquisition**
  - **Opportunity to Own or Lease Furnished**
  - **Office Space With Open Layout**
  - **Opportunity to lease out office space to providers**



BOARD ROOM

EXIT



