

Cure Violence Winston-Salem Forsyth WINS

Winston-Salem City Council Meeting May 12, 2025



Overview

- Evaluation Overview
- Methodology
 - Selection of Comparison Neighborhood
- Impact Evaluation
 - Monthly Incident Rates With Firearms
 - Yearly Counts Of Firearm-related Homicides
 - Yearly Breakdown Of Violent Crimes Involving Firearms
- Questions and Answers

Overview

- Implementation Evaluation

- Dosage and quality of services provided
- Alignment of program activities with the national Cure Violence Model

- Impact Evaluation

- Shifts in attitudes, perceptions, and/or behaviors regarding violence
 - Program participants
 - Members of the target community

Implementation Questions

1. To what extent have Forsyth WINS implementation activities been implemented consistently and with fidelity (to the Cure Violence model) in terms of intensity and duration?
2. What factors enhance or impede Forsyth WINS implementation of the Cure Violence Model?
3. What are stakeholders' perceptions regarding the advantages and/or disadvantages of implementing the Forsyth WINS program in the targeted community?

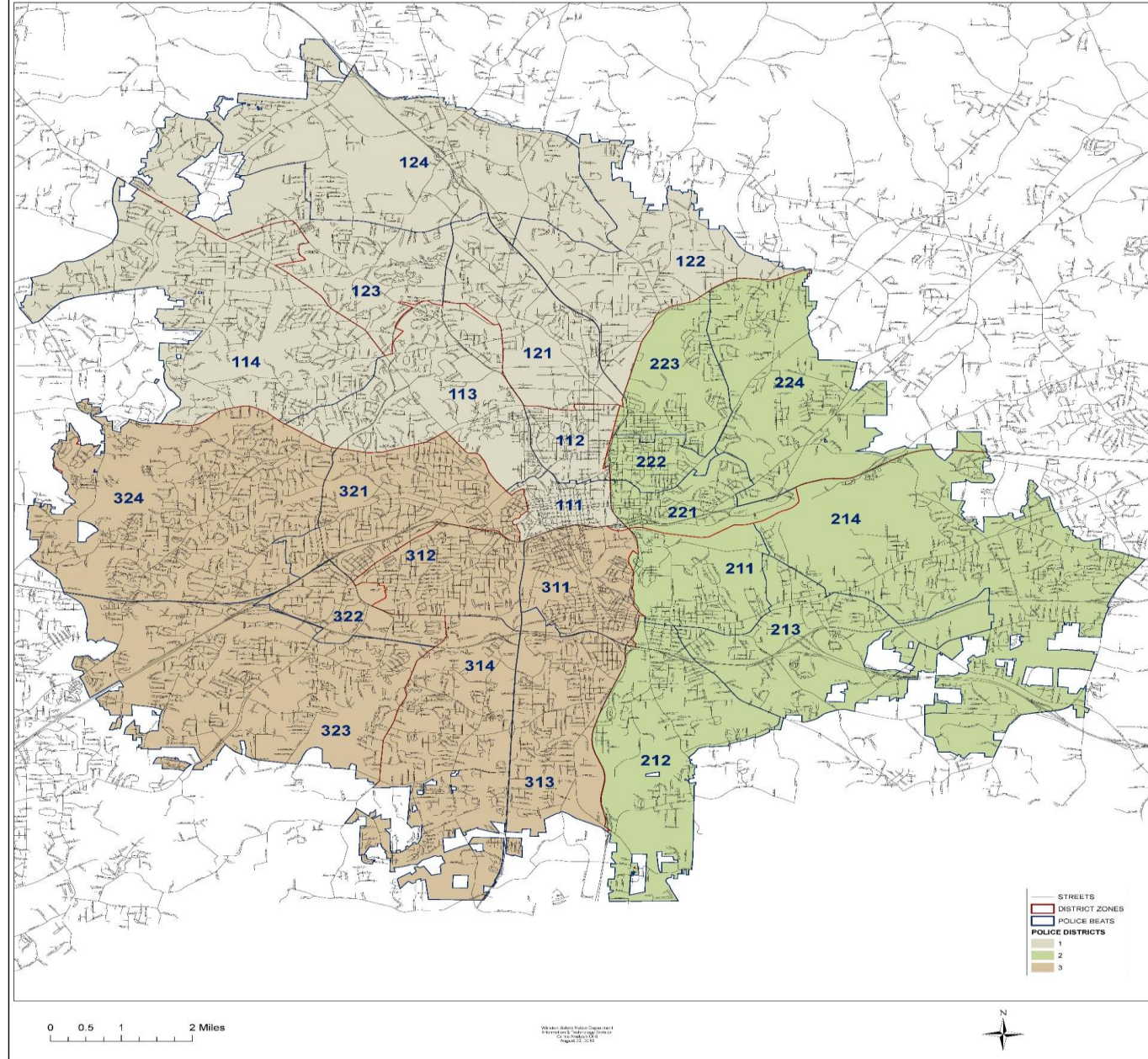
Impact Questions

1. How do community residents and stakeholders perceive violence in the Cure Violence study neighborhood?
2. Is there a difference in the reported rate of violence between the targeted (Cure Violence study neighborhood) and the comparison neighborhood?
3. To what extent has there been a reduction in violent crimes in the Cure Violence study neighborhood?

Impact Evaluation Focus

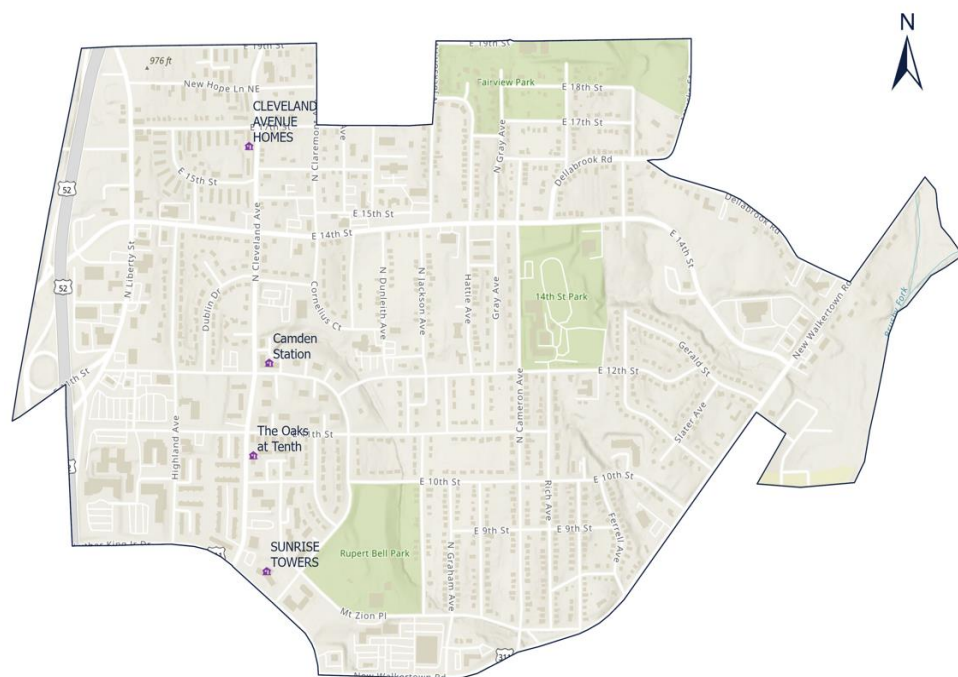
- The impact evaluation will focus on:
 - reduction in neighborhood violence,
 - reduction in involvement in neighborhood violence by individuals in the target age range and other social demographics of the intervention,
 - change in community acceptance of violence (attitudes and actions), and
 - changes in available alternatives to violence for gaining access to desired resources/opportunities.

POLICE DISTRICTS AND BEATS

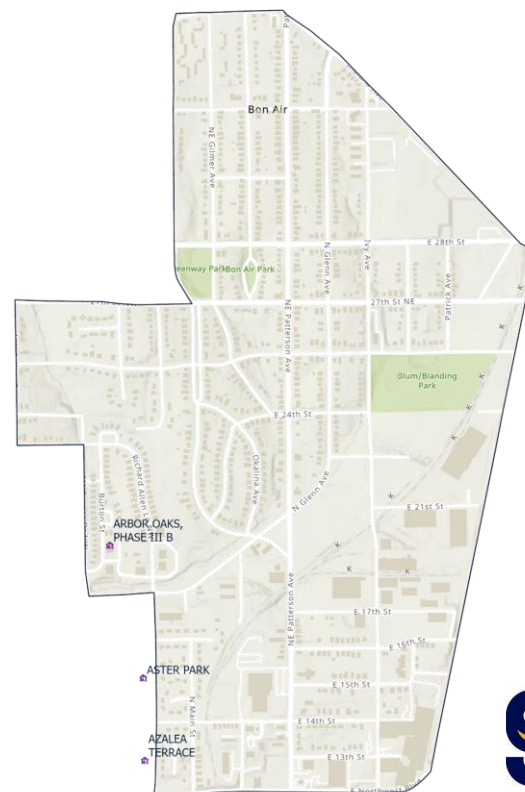


Treatment and Comparison Neighborhoods

Target Neighborhood



Comparison Neighborhood



Demographics of Treatment and Control Neighborhoods

	Beat 222	Tract 400
Population	3,536	3,232
Race: Black/African American	74.9%	77%
Race: White	4.5%	6%
Race: Some other race	14.7%	11.5%
Race: 2 or more races	5.3%	4.6%
Ethnicity: Hispanic	20%	14.8%
Age: 0 - 17 years	32.7%	22.2%
Age: 18 – 64 years	57.6%	61.6%
Age: 65+ years	9.7%	16.3%
Median Household Income	\$22,233	\$26,183
Total Housing Units	1,915	1,482
Renters	75%	65%
Detached Single Family Homes	842	1082
Small Apartments	799	326
Public Housing in Spatial Influence	4	4

Reported Crime in Treatment and Control Neighborhoods

	Beat 222	Tract 400
Reported Crime since 2020		
Homicides	8	5
Robberies	44	34
Aggravated Assaults	312	173
Shooting at an occupied dwelling or vehicle	77	52
Person being shot (excluding homicides, all of which involved a firearm)	45	28

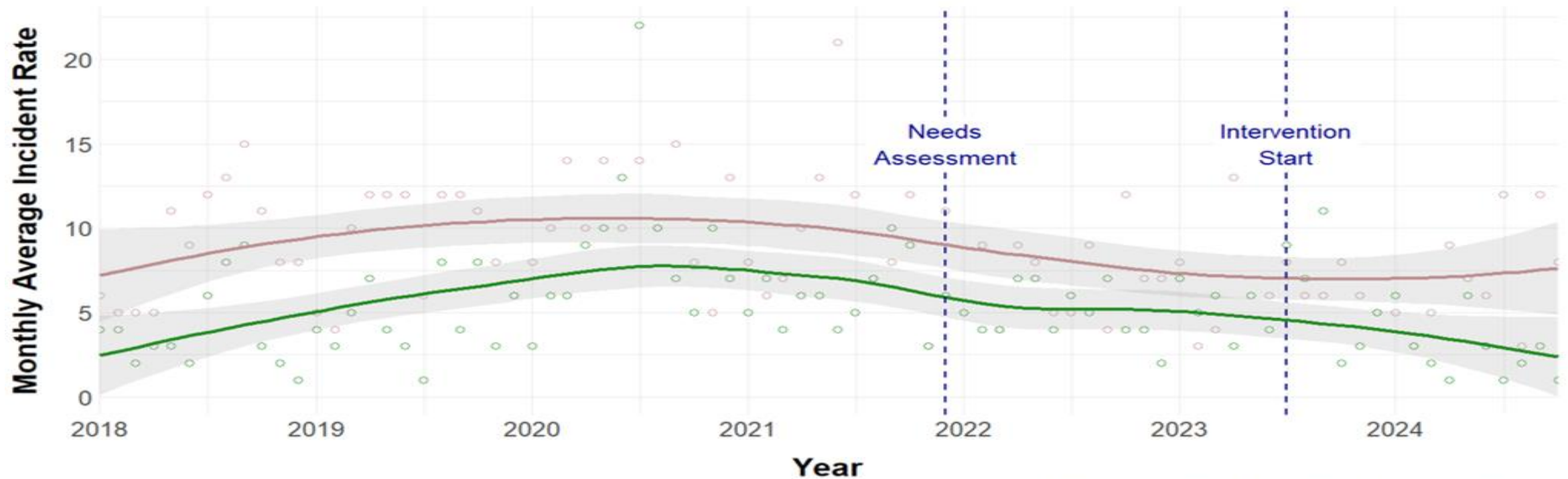
IMPACT EVALUATION

Trends in Incident Rates with Firearms

Trends in Monthly Incident Rates with Firearms (2018–2024)

Comparison of Monthly Incident Rates Between Treatment and Comparison

Comparison Treatment

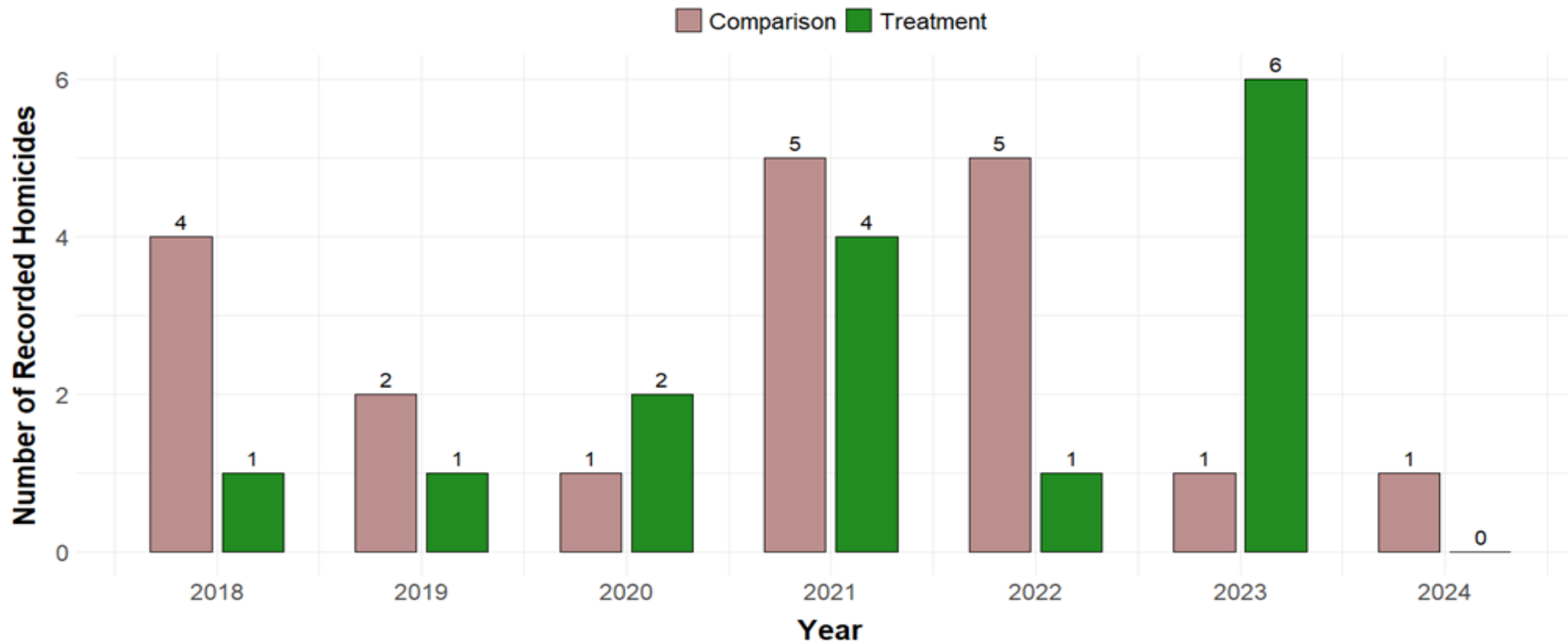


Source: Incident Report Data, Winston-Salem Police Department

Homicides Involving Firearms

Yearly Homicides Involving Firearms (2018–2024)

Firearm-Related Homicides: Treatment vs. Comparison Areas

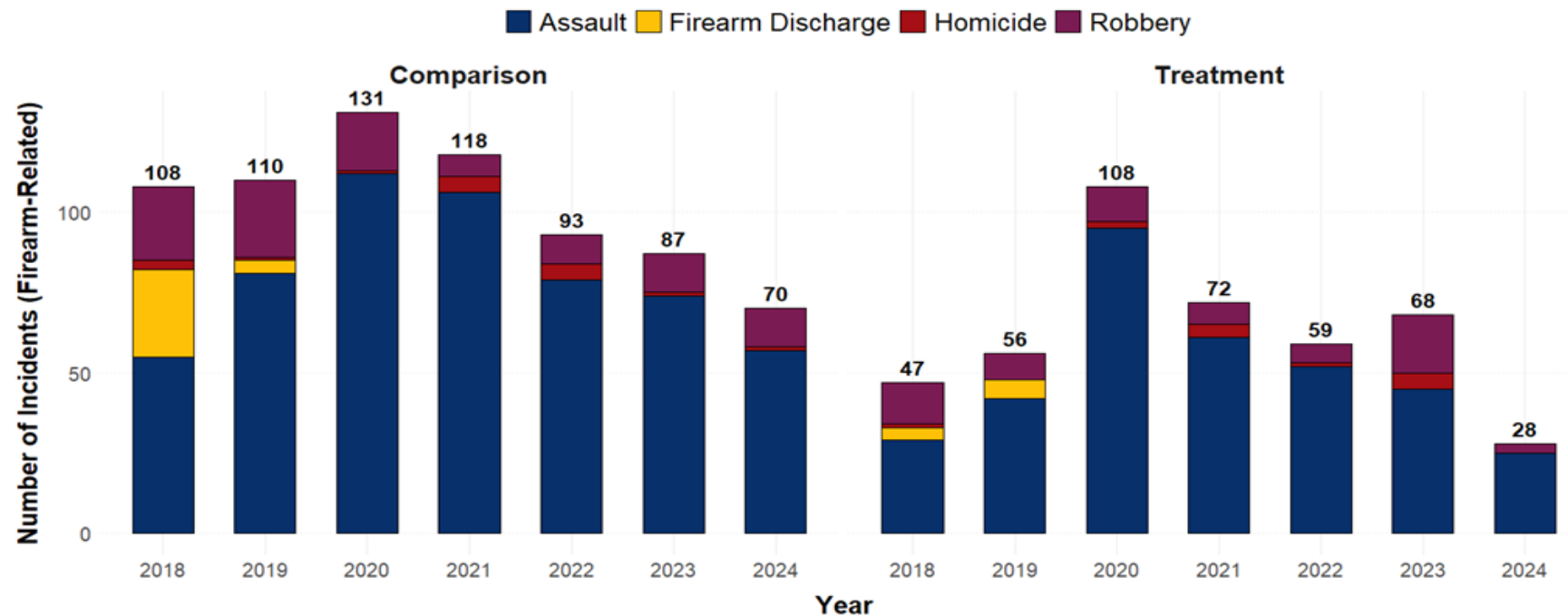


Source: Incident Report Data, Winston-Salem Police Department

Trends in Violent Crimes with Firearms

Trends in Yearly Violent Crimes with Firearms by Treatment and Crime Type

Yearly Breakdown of Violent Crimes by Category and Treatment Group (2018–2024)



Source: Incident Report Data, Winston-Salem Police Department

Concluding Thoughts

- CV Global Certification
- Expansion
- Sustainability
 - Research suggests it can take from two to four years to fully and successfully operationalize an evidence-based program, practice, or effective innovation (Bierman et al., 2002; Fixsen, Blase, Timbers, & Wolf, 2001; Panzano & Roth, 2006; Prochaska & DiClemente, 1982; Saldana et al., 2011).

Evaluation Reports

- Baseline Report – February 2023
- Mid-Year Memo – December 2023
- Year 1 Report – July 2024
- Mid-Year Memo – December 2024
- Year 2 Report – July 2025

Questions & Answers



Thank you!

