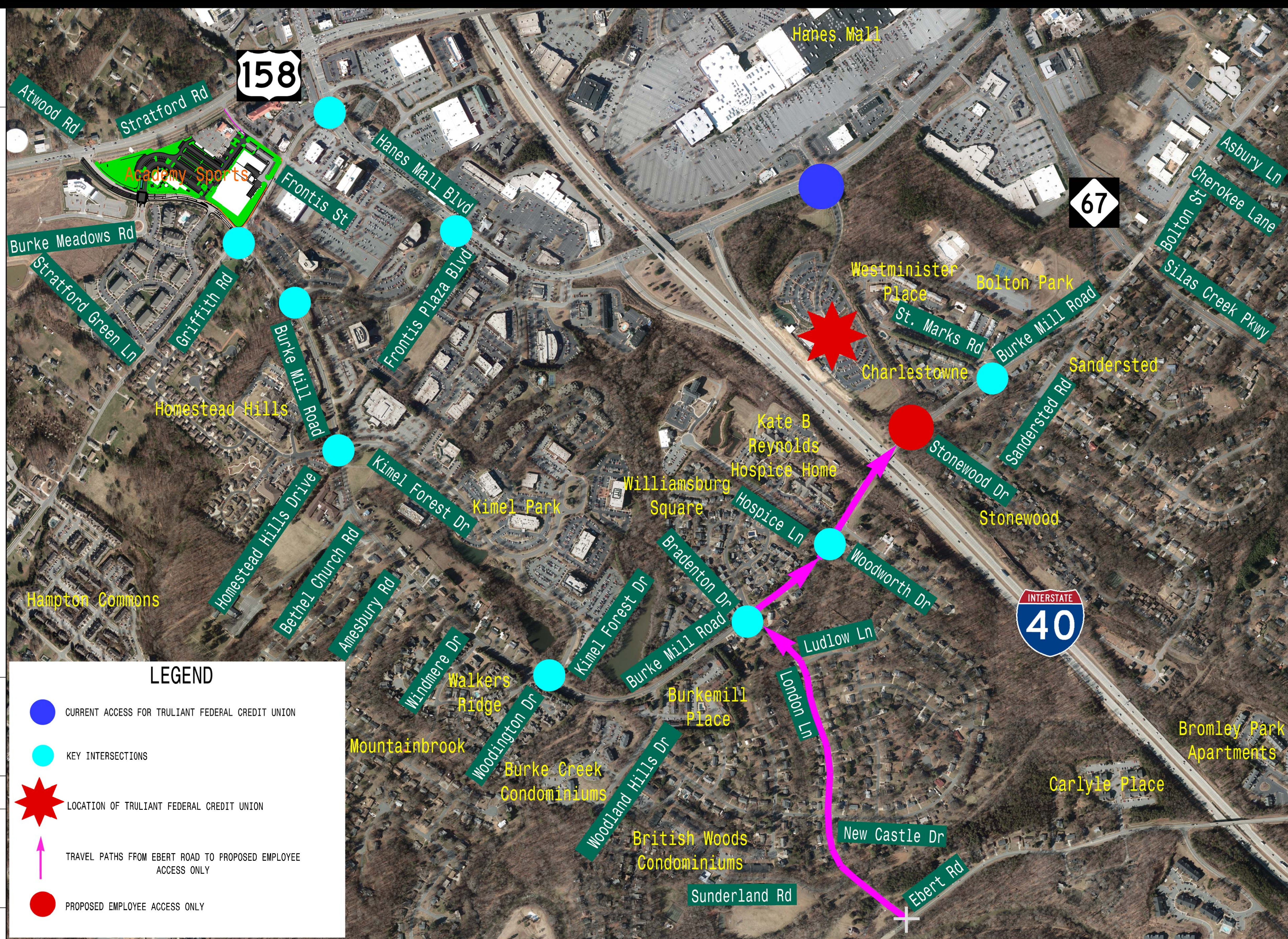
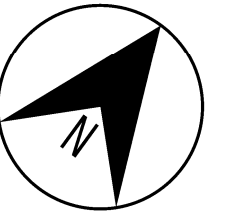
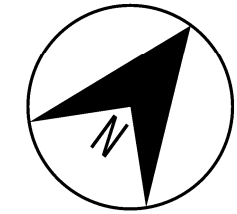







Exhibit B: Proposed Truliant Access and Traffic Patterns



LEGEND

-  CURRENT ACCESS FOR TRULIANT FEDERAL CREDIT UNION
-  KEY INTERSECTIONS
-  LOCATION OF TRULIANT FEDERAL CREDIT UNION
-  TRAVEL PATHS FROM EBERT ROAD TO PROPOSED EMPLOYEE ACCESS ONLY
-  PROPOSED EMPLOYEE ACCESS ONLY

DAVENPORT

HOME OFFICE
 119 BROOKSTOWN AVE, SUITE PH1
 WINSTON-SALEM, NC 27101
 336.744.1636 www.davenportworld.com
 NCBELS FIRM LICENSE NO. C-2522

JULY 2019



DAVENPORT

HOME OFFICE
 119 BROOKSTOWN AVE, SUITE PH1
 WINSTON-SALEM, NC 27101
 336.744.1636 www.davenportworld.com
 NCBELS FIRM LICENSE NO. C-2522



JULY 2019