

2/2/19, 11:24 AM Volumes/Marketing/Business Development/Affordable Housing/Third Wave Housing/2019 Sites/Winston Salem - Kester/The Retreat at Kester.pln



STEELE GROUP ARCHITECTS

217 W. Sixth Street | Winston-Salem, NC 27101
p. 336.734.2003 | www.steelegrouparchitects.com

Essex Place
4784 Essex Country Lane
Winston-Salem, NC 27103

W-3405 Exhibit A

©2019 Steele Group Architects

ISSUE:
Preliminary
Not For Construction

DATE:
#SGA PresDate

PROJECT NUMBER:
2019 - Kester

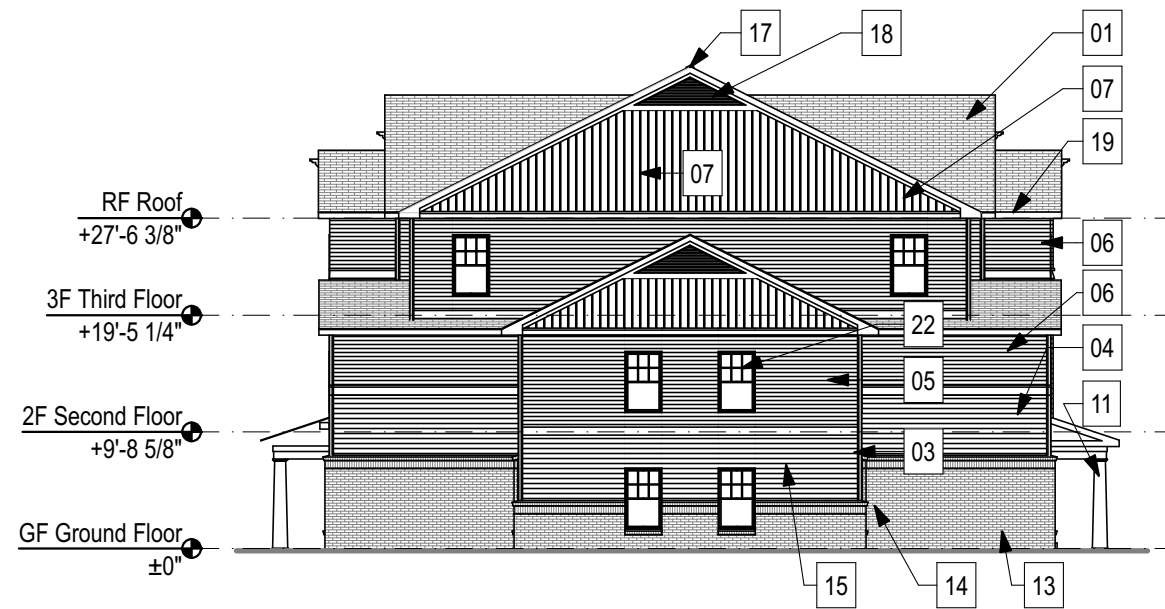
SHEET TITLE:
BUILDING ONE - EXTERIOR
ELEVATIONS

SHEET:

A-013

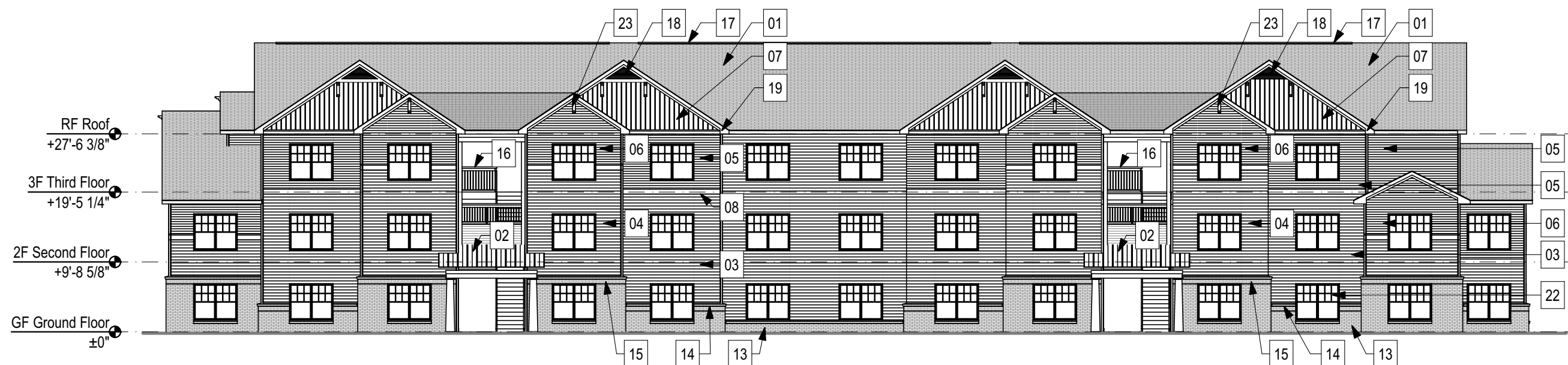
ELEVATION MATERIAL KEY

- | | |
|--|--|
| 01 30 YEAR ANTI-FUNGAL ARCHITECTURAL SHINGLE | 16 PVC GUARDRAIL |
| 02 STANDING SEAM METAL ROOF | 17 CONTINUOUS RIDGE VENT |
| 03 VINYL DOUBLE 5" LAP SIDING COLOR 1 | 18 VINYL LOUVER |
| 04 VINYL DOUBLE 5" LAP SIDING COLOR 2 | 19 ALUMINUM WRAPPED WOOD TRIM |
| 05 VINYL DOUBLE 4" LAP SIDING COLOR 1 | 20 PRE-FINISHED ALUM DOWNSPOUT |
| 06 VINYL DOUBLE 4" LAP SIDING COLOR 2 | 21 PRE-FINISHED SEAMLESS GUTTER |
| 07 VINYL BOARD 'N BATTEN | 22 VINYL SINGLE HUNG WINDOW |
| 08 VINYL SINGLE 8" LAP SIDING (WHITE) | 23 DECORATIVE PVC BRACKET - FYPON #XXXX OR EQUAL |
| 09 VINYL T-TRIM MOULDING (WHITE) | 24 DECORATIVE PVC BRACKET - FYPON #XXXX OR EQUAL |
| 10 VINYL OUTSIDE CORNER POST (WHITE) | 25 FIBER CEMENT LAP SIDING |
| 11 SQUARE TAPERED PVC COLUMN COVER | 26 FIBER CEMENT PANELS |
| 12 PVC TRIM BOARD | 27 FIBER CEMENT TRIM |
| 13 FACE BRICK | |
| 14 BRICK ROWLOCK SILL | |
| 15 BRICK SOLDIER COURSE | |



1/16" = 1'-0"

RIGHT ELEVATION - BUILDING 1



1/16" = 1'-0"

FRONT ELEVATION - BUILDING 1

W-3405 Exhibit A

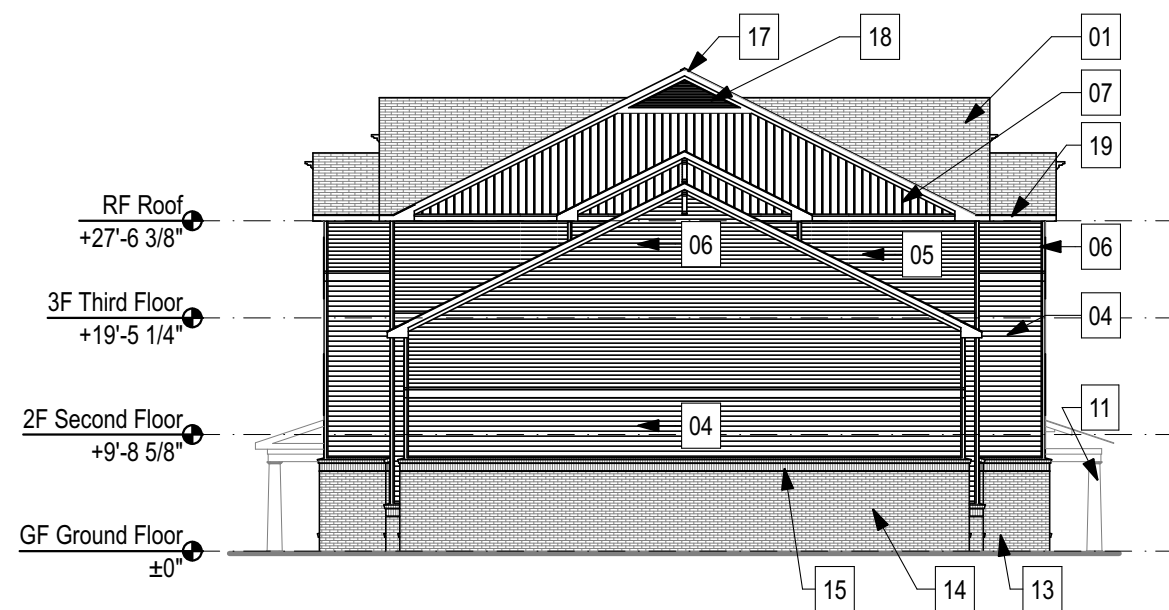


STEELE GROUP ARCHITECTS

217 W. Sixth Street | Winston-Salem, NC 27101
p. 336.734.2003 | www.steelegrouparchitects.com

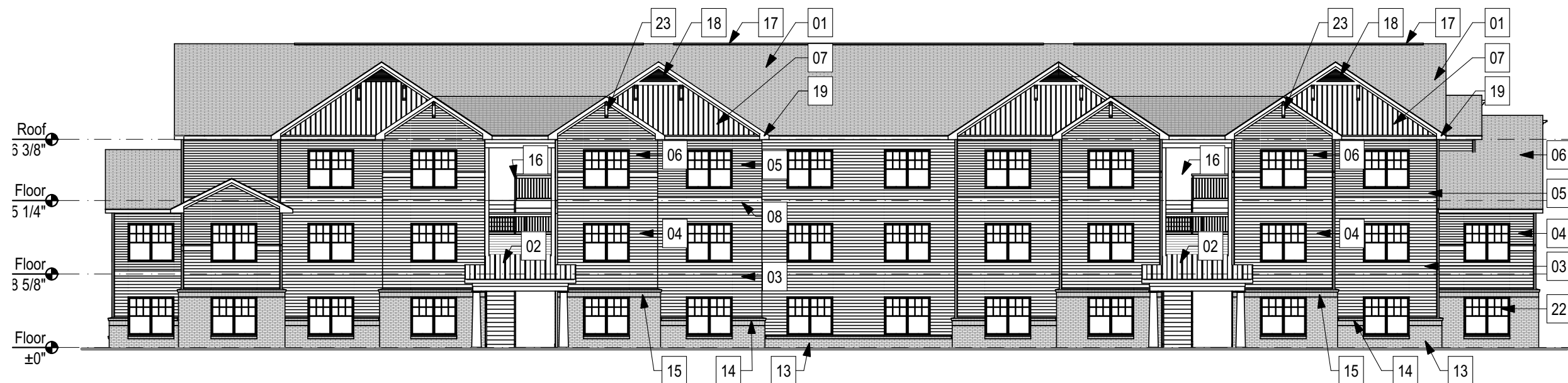
ELEVATION MATERIAL KEY

- | | |
|--|--|
| 01 30 YEAR ANTI-FUNGAL ARCHITECTURAL SHINGLE | 16 PVC GUARDRAIL |
| 02 STANDING SEAM METAL ROOF | 17 CONTINUOUS RIDGE VENT |
| 03 VINYL DOUBLE 5" LAP SIDING COLOR 1 | 18 VINYL LOUVER |
| 04 VINYL DOUBLE 5" LAP SIDING COLOR 2 | 19 ALUMINUM WRAPPED WOOD TRIM |
| 05 VINYL DOUBLE 4" LAP SIDING COLOR 1 | 20 PRE-FINISHED ALUM DOWNSPOUT |
| 06 VINYL DOUBLE 4" LAP SIDING COLOR 2 | 21 PRE-FINISHED SEAMLESS GUTTER |
| 07 VINYL BOARD 'N BATTEN | 22 VINYL SINGLE HUNG WINDOW |
| 08 VINYL SINGLE 8" LAP SIDING (WHITE) | 23 DECORATIVE PVC BRACKET - FYPON #XXXX OR EQUAL |
| 09 VINYL T-TRIM MOULDING (WHITE) | 24 DECORATIVE PVC BRACKET - FYPON #XXXX OR EQUAL |
| 10 VINYL OUTSIDE CORNER POST (WHITE) | 25 FIBER CEMENT LAP SIDING |
| 11 SQUARE TAPERED PVC COLUMN COVER | 26 FIBER CEMENT PANELS |
| 12 PVC TRIM BOARD | 27 FIBER CEMENT TRIM |
| 13 FACE BRICK | |
| 14 BRICK ROWLOCK SILL | |
| 15 BRICK SOLDIER COURSE | |



1/16" = 1'-0"

LEFT ELEVATION - BUILDING 1



1/16" = 1'-0"

REAR ELEVATION - BUILDING 1

Essex Place
4784 Essex Country Lane
Winston-Salem, NC 27103

©2019 Steele Group Architects

ISSUE:
Preliminary
Not For Construction
DATE:
#SGA PresDate
PROJECT NUMBER:
2019 - Kester
SHEET TITLE:
BUILDING ONE - EXTERIOR
ELEVATIONS

SHEET:

A-014



STEELE GROUP ARCHITECTS

217 W. Sixth Street | Winston-Salem, NC 27101
p. 336.734.2003 | www.steelegrouparchitects.com

Essex Place
4784 Essex Country Lane
Winston-Salem, NC 27103

©2019 Steele Group Architects

ISSUE:
Preliminary
Not For Construction
DATE:
#SGA PresDate
PROJECT NUMBER:
2019 - Kester

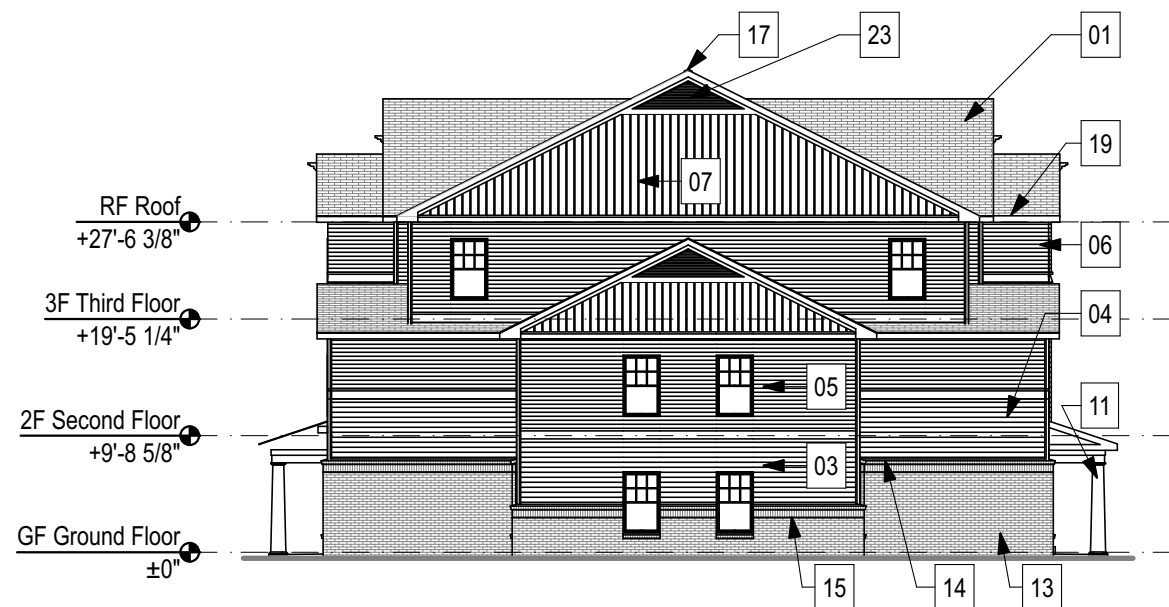
SHEET TITLE:
BUILDING TWO - EXTERIOR
ELEVATIONS

SHEET:

A-015

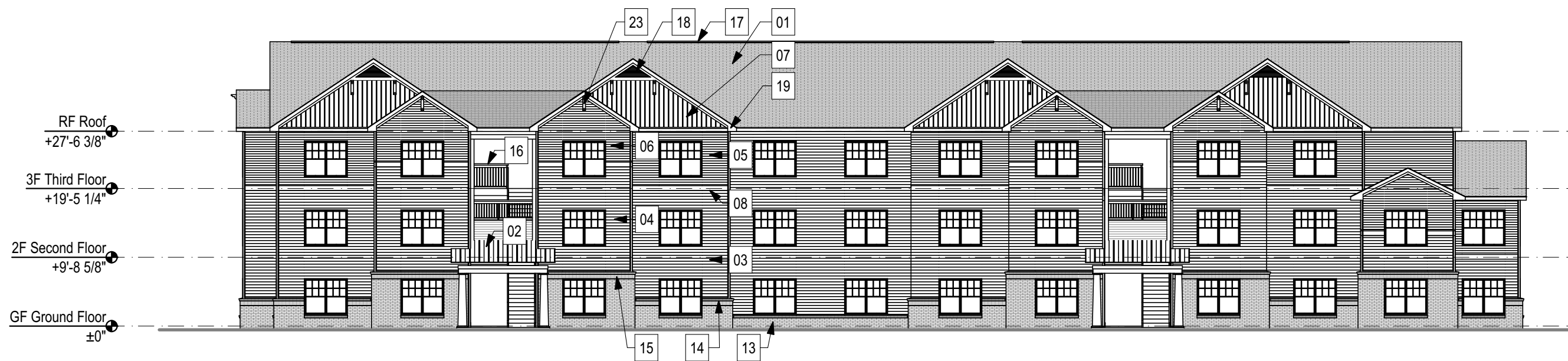
ELEVATION MATERIAL KEY

- | | |
|--|--|
| 01 30 YEAR ANTI-FUNGAL ARCHITECTURAL SHINGLE | 16 PVC GUARDRAIL |
| 02 STANDING SEAM METAL ROOF | 17 CONTINUOUS RIDGE VENT |
| 03 VINYL DOUBLE 5" LAP SIDING COLOR 1 | 18 VINYL LOUVER |
| 04 VINYL DOUBLE 5" LAP SIDING COLOR 2 | 19 ALUMINUM WRAPPED WOOD TRIM |
| 05 VINYL DOUBLE 4" LAP SIDING COLOR 1 | 20 PRE-FINISHED ALUM DOWNSPOUT |
| 06 VINYL DOUBLE 4" LAP SIDING COLOR 2 | 21 PRE-FINISHED SEAMLESS GUTTER |
| 07 VINYL BOARD 'N BATTEN | 22 VINYL SINGLE HUNG WINDOW |
| 08 VINYL SINGLE 8" LAP SIDING (WHITE) | 23 DECORATIVE PVC BRACKET - FYPON #XXXX OR EQUAL |
| 09 VINYL T-TRIM MOULDING (WHITE) | 24 DECORATIVE PVC BRACKET - FYPON #XXXX OR EQUAL |
| 10 VINYL OUTSIDE CORNER POST (WHITE) | 25 FIBER CEMENT LAP SIDING |
| 11 SQUARE TAPERED PVC COLUMN COVER | 26 FIBER CEMENT PANELS |
| 12 PVC TRIM BOARD | 27 FIBER CEMENT TRIM |
| 13 FACE BRICK | |
| 14 BRICK ROWLOCK SILL | |
| 15 BRICK SOLDIER COURSE | |



1/16" = 1'-0"

RIGHT ELEVATION - BUILDING 2



1/16" = 1'-0"

FRONT ELEVATION - BUILDING 2



STEELE GROUP ARCHITECTS

217 W. Sixth Street | Winston-Salem, NC 27101
p. 336.734.2003 | www.steelegrouparchitects.com

Essex Place
4784 Essex Country Lane
Winston-Salem, NC 27103

©2019 Steele Group Architects

ISSUE:
Preliminary
Not For Construction
DATE:
#SGA PresDate
PROJECT NUMBER:
2019 - Kester

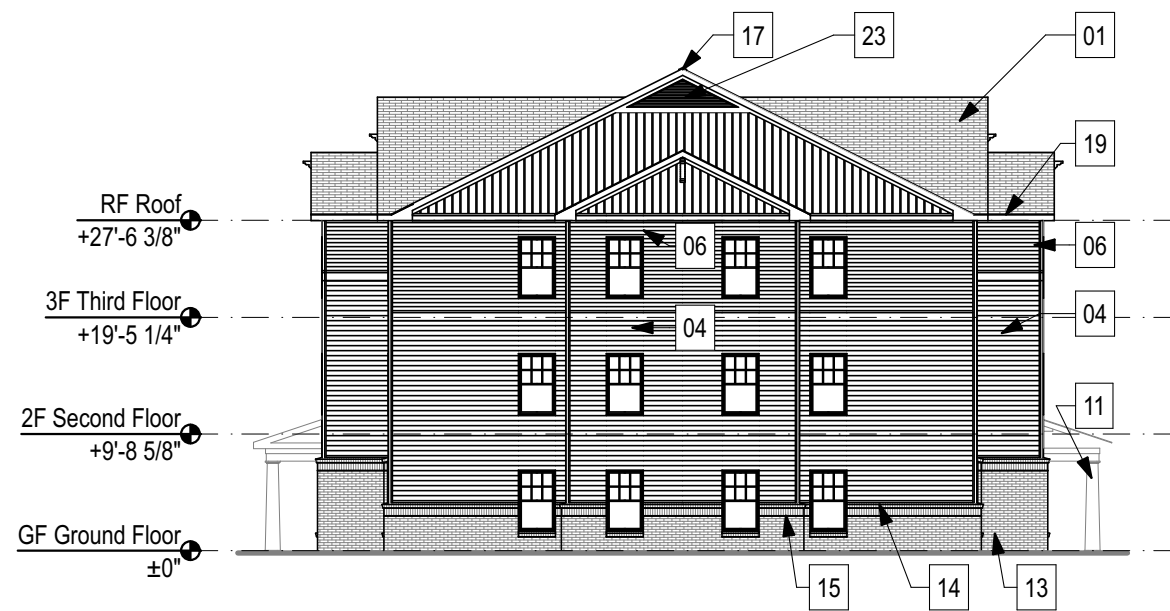
SHEET TITLE:
BUILDING TWO - EXTERIOR
ELEVATIONS

SHEET:

A-016

ELEVATION MATERIAL KEY

- | | | | |
|----|---|----|---|
| 01 | 30 YEAR ANTI-FUNGAL ARCHITECTURAL SHINGLE | 16 | PVC GUARDRAIL |
| 02 | STANDING SEAM METAL ROOF | 17 | CONTINUOUS RIDGE VENT |
| 03 | VINYL DOUBLE 5" LAP SIDING COLOR 1 | 18 | VINYL LOUVER |
| 04 | VINYL DOUBLE 5" LAP SIDING COLOR 2 | 19 | ALUMINUM WRAPPED WOOD TRIM |
| 05 | VINYL DOUBLE 4" LAP SIDING COLOR 1 | 20 | PRE-FINISHED ALUM DOWNSPOUT |
| 06 | VINYL DOUBLE 4" LAP SIDING COLOR 2 | 21 | PRE-FINISHED SEAMLESS GUTTER |
| 07 | VINYL BOARD 'N BATTEN | 22 | VINYL SINGLE HUNG WINDOW |
| 08 | VINYL SINGLE 8" LAP SIDING (WHITE) | 23 | DECORATIVE PVC BRACKET - FYPON #XXXX OR EQUAL |
| 09 | VINYL T-TRIM MOULDING (WHITE) | 24 | DECORATIVE PVC BRACKET - FYPON #XXXX OR EQUAL |
| 10 | VINYL OUTSIDE CORNER POST (WHITE) | 25 | FIBER CEMENT LAP SIDING |
| 11 | SQUARE TAPERED PVC COLUMN COVER | 26 | FIBER CEMENT PANELS |
| 12 | PVC TRIM BOARD | 27 | FIBER CEMENT TRIM |
| 13 | FACE BRICK | | |
| 14 | BRICK ROWLOCK SILL | | |
| 15 | BRICK SOLDIER COURSE | | |



1/16" = 1'-0"

LEFT ELEVATION - BUILDING 2



1/16" = 1'-0"

REAR ELEVATION - BUILDING 2

2/2/19, 11:24 AM \Volumes\Marketing\Business Development\Affordable Housing\Third Wave Housing\2019 Sites\Winston Salem - Kester\The Retreat at Kester.pln



STEELE GROUP ARCHITECTS

217 W. Sixth Street | Winston-Salem, NC 27101
p. 336.734.2003 | www.steelegrouparchitects.com

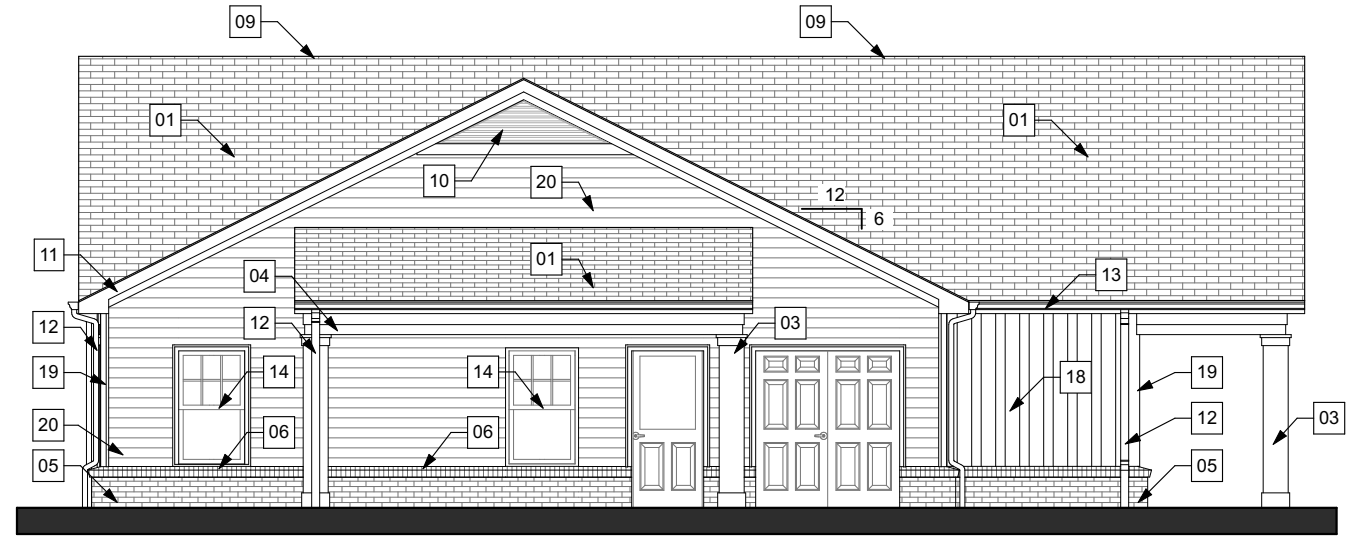
Essex Place
4784 Essex Country Lane
Winston-Salem, NC 27103

©2019 Steele Group Architects

ISSUE:
Preliminary
Not For Construction
DATE:
#SGA PresDate
PROJECT NUMBER:
2019 - Kester
SHEET TITLE:
CLUBHOUSE - EXTERIOR
ELEVATIONS

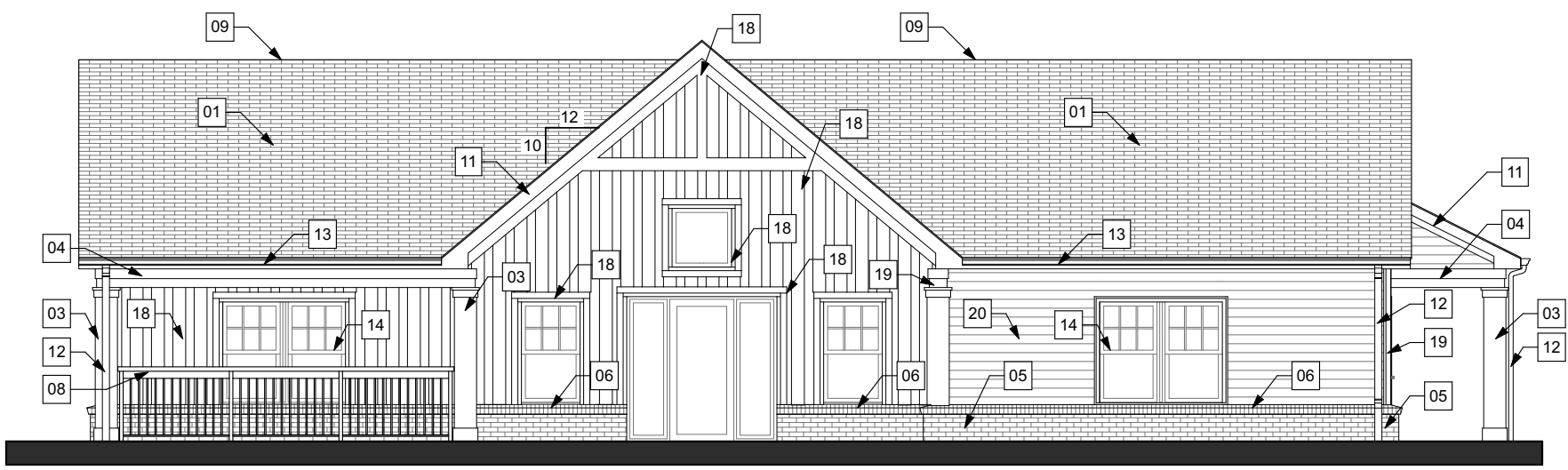
SHEET:
A-018

ELEVATION MATERIAL KEY			
01	30 YEAR ANTI-FUNGAL ARCHITECTURAL SHINGLE	16	FIBER CEMENT LAP SIDING
02	NOT USED	17	FIBER CEMENT PANELS
03	SQUARE PVC COLUMN COVER	18	FIBER CEMENT TRIM
04	PVC TRIM BOARD	19	VINYL OUTSIDE CORNER POST (WHITE)
05	FACE BRICK	20	VINYL DOUBLE 5" LAP SIDING (ANTIQUE WHITE)
06	BRICK ROWLOCK SILL	21	VINYL DOUBLE 5" LAP SIDING (PREMIUM BLUE, SIENNA OR CREAM)
07	BRICK SOLDIER COURSE	22	VINYL SHAKES (ANTIQUE WHITE)
08	PVC GUARDRAIL	23	VINYL SHAKES (PREMIUM BLUE, SIENNA OR CREAM)
09	CONTINUOUS RIDGE VENT	24	VINYL BOARD 'N BATTEN (ANTIQUE WHITE)
10	VINYL LOUVER	25	VINYL SINGLE 8" LAP SIDING (WHITE)
11	ALUMINUM WRAPPED WOOD TRIM	26	VINYL T-TRIM MOULDING (WHITE)
12	PRE-FINISHED ALUM DOWNSPOUT		
13	PRE-FINISHED SEAMLESS GUTTER		
14	VINYL SINGLE HUNG WINDOW		
15	PRE-FAB METAL AWNING		



1/8" = 1'-0"

CLUBHOUSE - RIGHT ELEVATION



1/8" = 1'-0"

CLUBHOUSE - FRONT ELEVATION

2/2/19, 11:24 AM \Volumes\Marketing\Business Development\Affordable Housing\Third Wave Housing\2019 Sites\Winston Salem - Kester\The Retreat at Kester.pln



STEELE GROUP ARCHITECTS

217 W. Sixth Street | Winston-Salem, NC 27101
p. 336.734.2003 | www.steelgrouparchitects.com

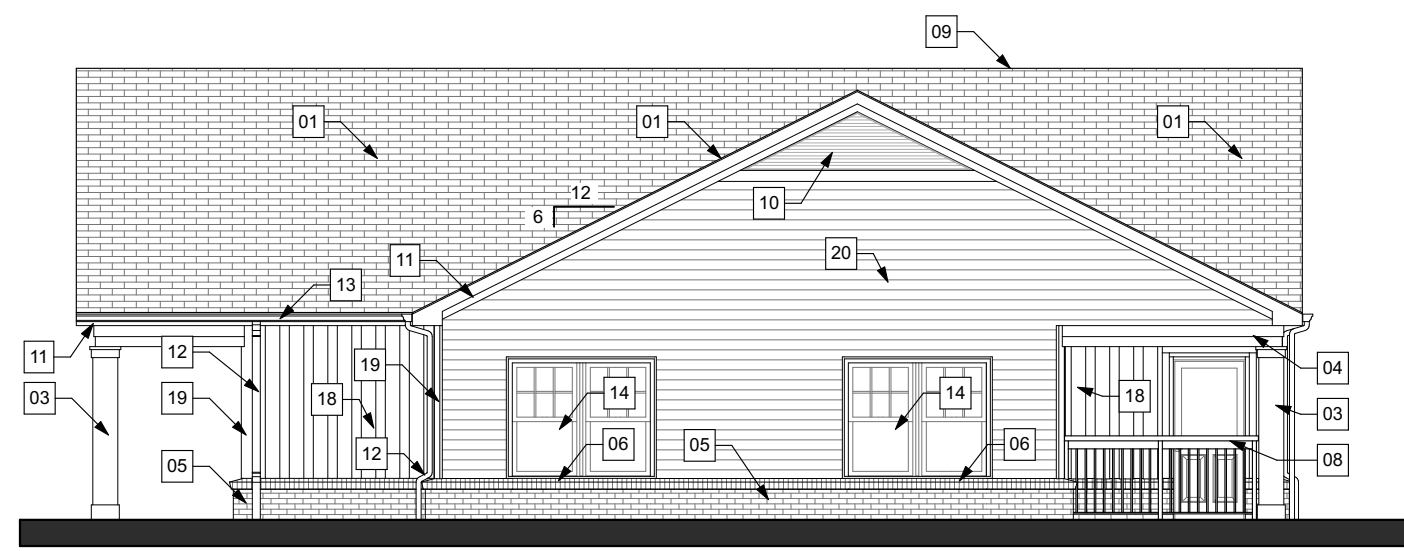
Essex Place
4784 Essex Country Lane
Winston-Salem, NC 27103

©2019 Steele Group Architects

ISSUE:
Preliminary
Not For Construction
DATE:
#SGA PresDate
PROJECT NUMBER:
2019 - Kester
SHEET TITLE:
CLUBHOUSE - EXTERIOR
ELEVATIONS

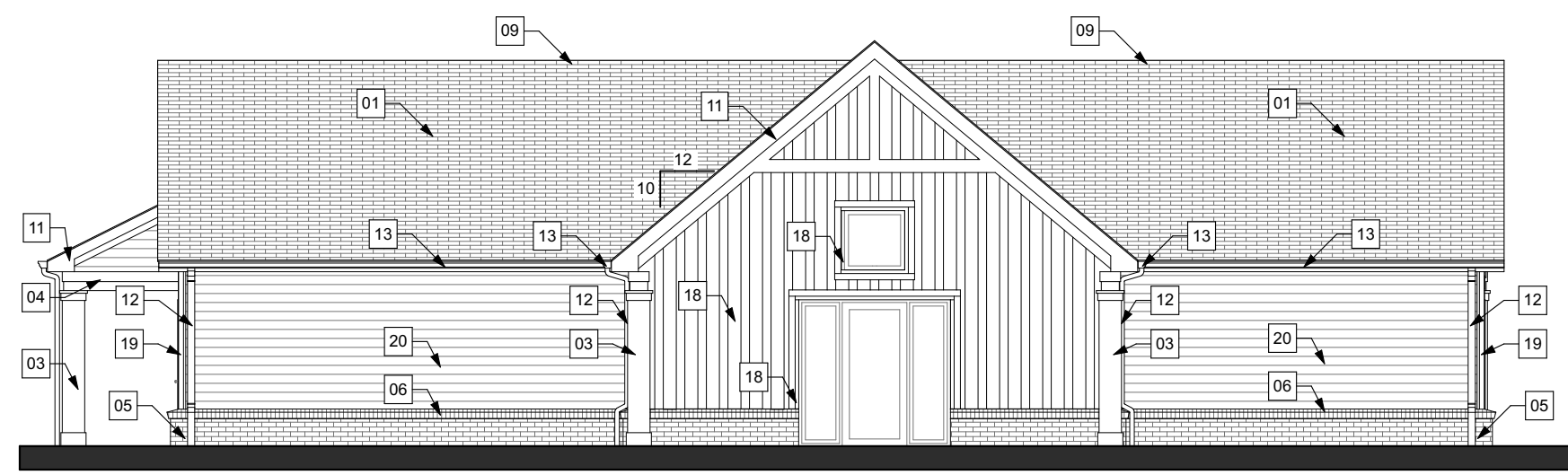
SHEET:
A-019

ELEVATION MATERIAL KEY			
01	30 YEAR ANTI-FUNGAL ARCHITECTURAL SHINGLE	16	FIBER CEMENT LAP SIDING
02	NOT USED	17	FIBER CEMENT PANELS
03	SQUARE PVC COLUMN COVER	18	FIBER CEMENT TRIM
04	PVC TRIM BOARD	19	VINYL OUTSIDE CORNER POST (WHITE)
05	FACE BRICK	20	VINYL DOUBLE 5" LAP SIDING (ANTIQUE WHITE)
06	BRICK ROWLOCK SILL	21	VINYL DOUBLE 5" LAP SIDING (PREMIUM BLUE, SIENNA OR CREAM)
07	BRICK SOLDIER COURSE	22	VINYL SHAKES (ANTIQUE WHITE)
08	PVC GUARDRAIL	23	VINYL SHAKES (PREMIUM BLUE, SIENNA OR CREAM)
09	CONTINUOUS RIDGE VENT	24	VINYL BOARD 'N BATTEN (ANTIQUE WHITE)
10	VINYL LOUVER	25	VINYL SINGLE 8" LAP SIDING (WHITE)
11	ALUMINUM WRAPPED WOOD TRIM	26	VINYL T-TRIM MOULDING (WHITE)
12	PRE-FINISHED ALUM DOWNSPOUT		
13	PRE-FINISHED SEAMLESS GUTTER		
14	VINYL SINGLE HUNG WINDOW		
15	PRE-FAB METAL AWNING		



1/8" = 1'-0"

CLUBHOUSE - LEFT ELEVATION



1/8" = 1'-0"

CLUBHOUSE - REAR ELEVATION