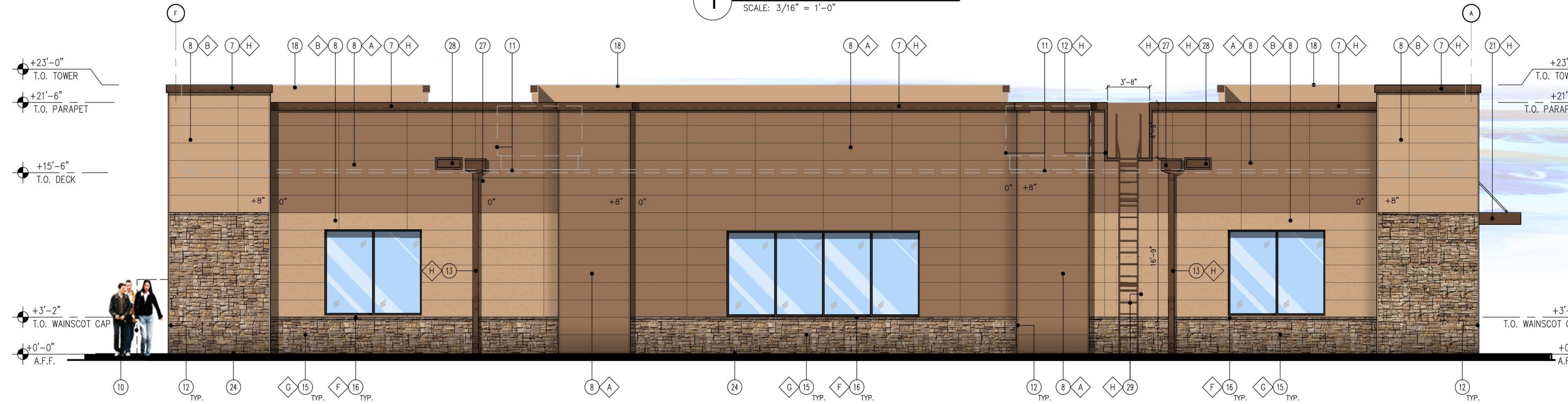
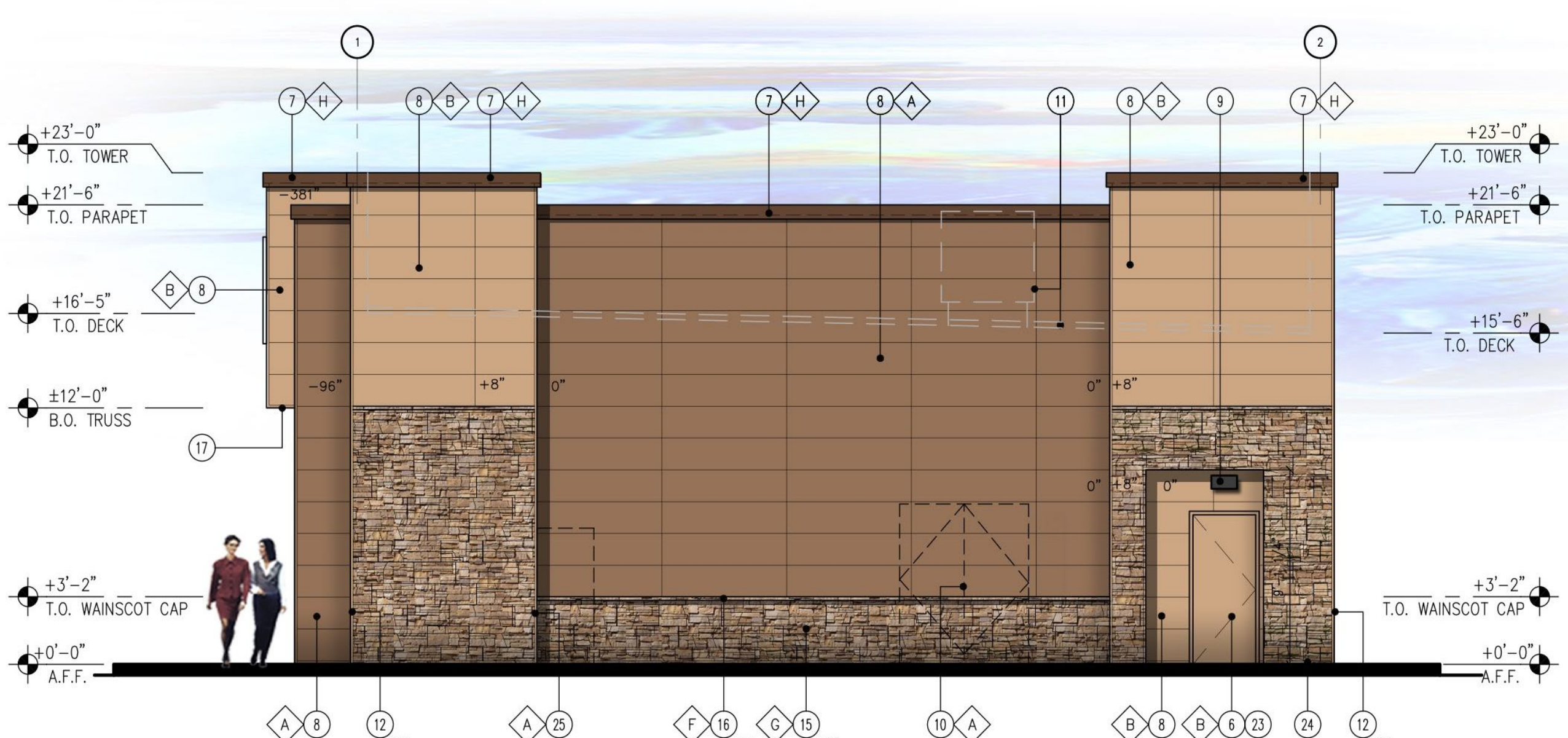


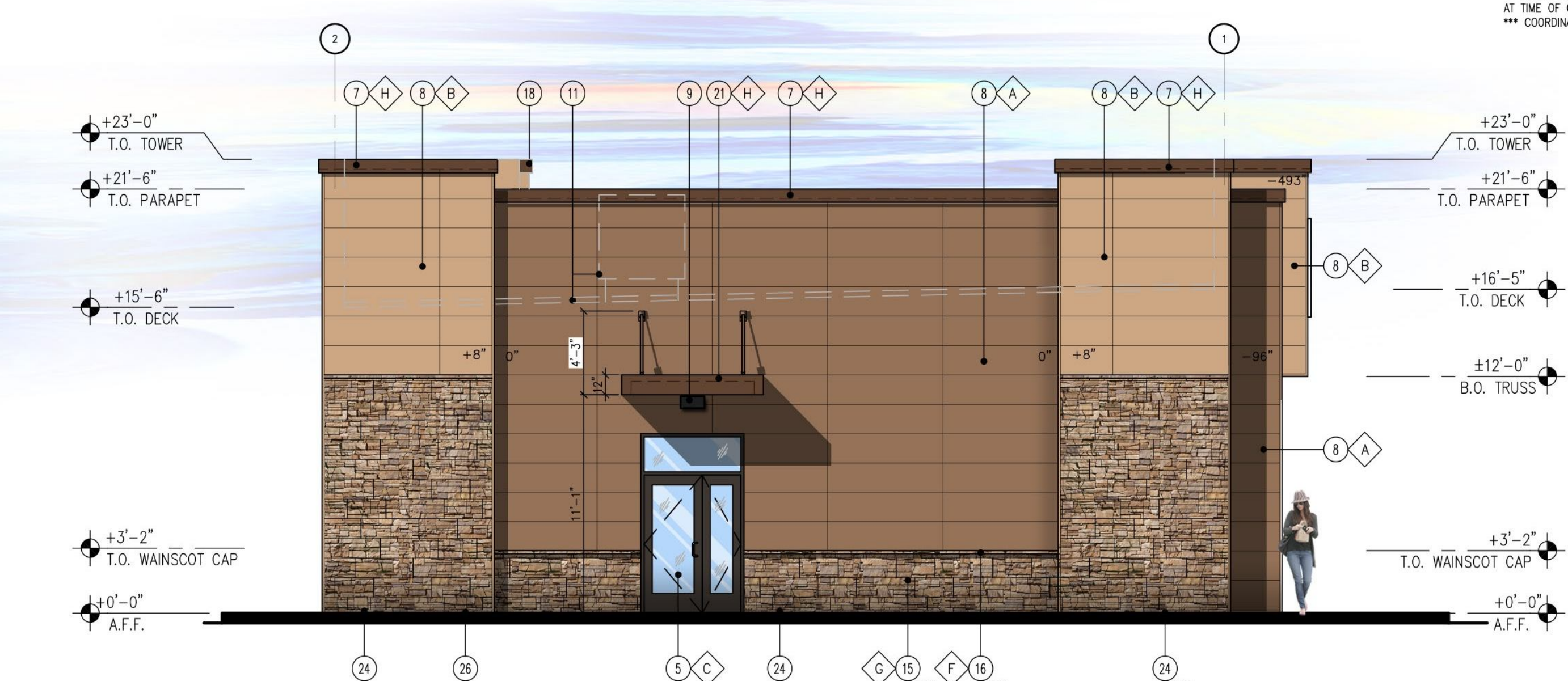
1 FRONT ELEVATION (SOUTH)
SCALE: 3/16" = 1'-0"



2 BACK ELEVATION (NORTH)
SCALE: 3/16" = 1'-0"



3 SIDE ELEVATION (EAST)
SCALE: 3/16" = 1'-0"



4 SIDE ELEVATION (WEST)
SCALE: 3/16" = 1'-0"

KEY NOTES

- STEEL COLUMN WRAP WITH BREAK METAL
- LINE OF CANOPY / SOFFIT
- DARK BRONZE ANODIZED WINDOW FRAME W/ CLEAR GLASS WINDOW SYSTEM
- INTERNALLY ILLUMINATED SIGN (UNDER SEPARATE PERMIT)
- DARK BRONZE ANODIZED DOOR W/ CLEAR GLASS STOREFRONT SYSTEM
- SERVICE DOOR, PAINT TO MATCH SURROUNDING WALL
- PRE-FINISHED METAL COPING
- NICHHA FIBER CEMENT WALL PANEL SYSTEM
- WALL MOUNTED LIGHT FIXTURE, COLOR: BLACK. SEE ELECTRICAL PLAN
- SES PANEL LOCATION. SEE ELECTRICAL PLAN
- ROOF LINE AND HVAC UNITS
- 1-1/2" STAINLESS STEEL CORNER KEY EDGE, TYP. TO ALL CORNERS
- DOWNSPOUT, RE: PLUMBING PLAN
- ADDRESSING LOCATION: 8" TALL INCH BLACK NUMBERS. FINAL AREA LOCATION TO BE DETERMINED BY FIRE DEPARTMENT.
- 1 3/8" THK. X 6" NICHHA KURASTONE HIGH FIBER CEMENT WAINSCOT
- 1-1/2" HIGH NICHHA FIBER CEMENT CAP INSTALL PER MFR. SPECS.
- NICHHA ESSENTIAL "OVERHANG" FLASHING
- PARAPET WALL BEYOND
- (KNOX) KEY-BOX AT 6'-0" AFF (IF REQUIRED BY FIRE DEPARTMENT)
- FIRE DEPARTMENT CONNECTION (IF REQUIRED)
- ALUMINUM AWNING WITH SUPPORT RODS ABOVE THE SIDE ENTRY DOOR BY CIRCLE K VENDOR. PROVIDE BLOCKING IN EXTERIOR WALL FOR AWNING AND SUPPORTS
- EMERGENCY FUEL SHUT-OFF SWITCH, REFER TO SHEET F1.0 - FUEL PIPING FLOOR PLAN
- INSULATED METAL DOOR
- NICHHA ESSENTIAL "STARTER" FLASHING
- CO2 TANK WITH METAL LOUVERED CONTAINER
- EXTERIOR FINISH TO EXTEND ABOVE SIDEWALK/GRADE, SEE DET. 8/A&1 & 11/A&1
- LEADER BOX. SEE PLUMBING DWGS.
- EMERGENCY OVERFLOW SCUPPER. SEE PLUMBING DWGS.
- METAL ROOF ACCESS LADDER WITH SECURITY DOOR

FINISH SCHEDULE

- A - NICHHA TUFF BLOCK
- COLOR TO MATCH #SW 6095 TOASTY
 - B - NICHHA TUFF BLOCK
- COLOR TO MATCH #SW 6115 TOTALLY TAN
 - C - 1" INSULATED, DOUBLE PANED CLEAR GLASS
 - D - SHERWIN WILLIAMS #SW 4081
- SAFETY RED
 - E - SHERWIN WILLIAMS #SW 7005
- CIRCLE K WHITE
 - F - NICHHA CHSELED SILL TAN
 - G - NICHHA LEDGESTONE BLUFF
 - H - SHERWIN WILLIAMS #SW 6090
- FIRESTONE MANSARD BROWN SR (USE FOR PRE-FINISHED METAL COPING)
 - I - CIRCLE K ORANGE #PMS 144
- * USE SHERWIN WILLIAMS MANUFACTURER ONLY
** COLOR TO BE PRE-ORDERED TO ENSURE AVAILABILITY AT TIME OF CONSTRUCTION
*** COORDINATE WITH OWNER'S REP

rdc.

11921 Freedom Drive #1110
Reston, Va 20190
t 703.668.0086
rdcollaborative.com

COPYRIGHT NOTICE
This drawing is the property of the above referenced Professional and is not to be used for any purpose other than the specific project and site named herein, and cannot be reproduced in any manner without the express written permission from the Professional.

REVISION

PROFESSIONAL SEAL

PROFESSIONAL IN CHARGE
RW
PROJECT MANAGER
RM
QUALITY CONTROL
RW
DRAWN BY
DA

PROJECT NAME
CIRCLE K STORES INC.

KERNERSVILLE NC
1400 UNION CROSS RD
KERNERSVILLE - NC



CIRCLE K STORES INC.

PROJECT NUMBER
XXXX

SHEET TITLE
EXTERIOR ELEVATIONS

SHEET NUMBER
A2.0