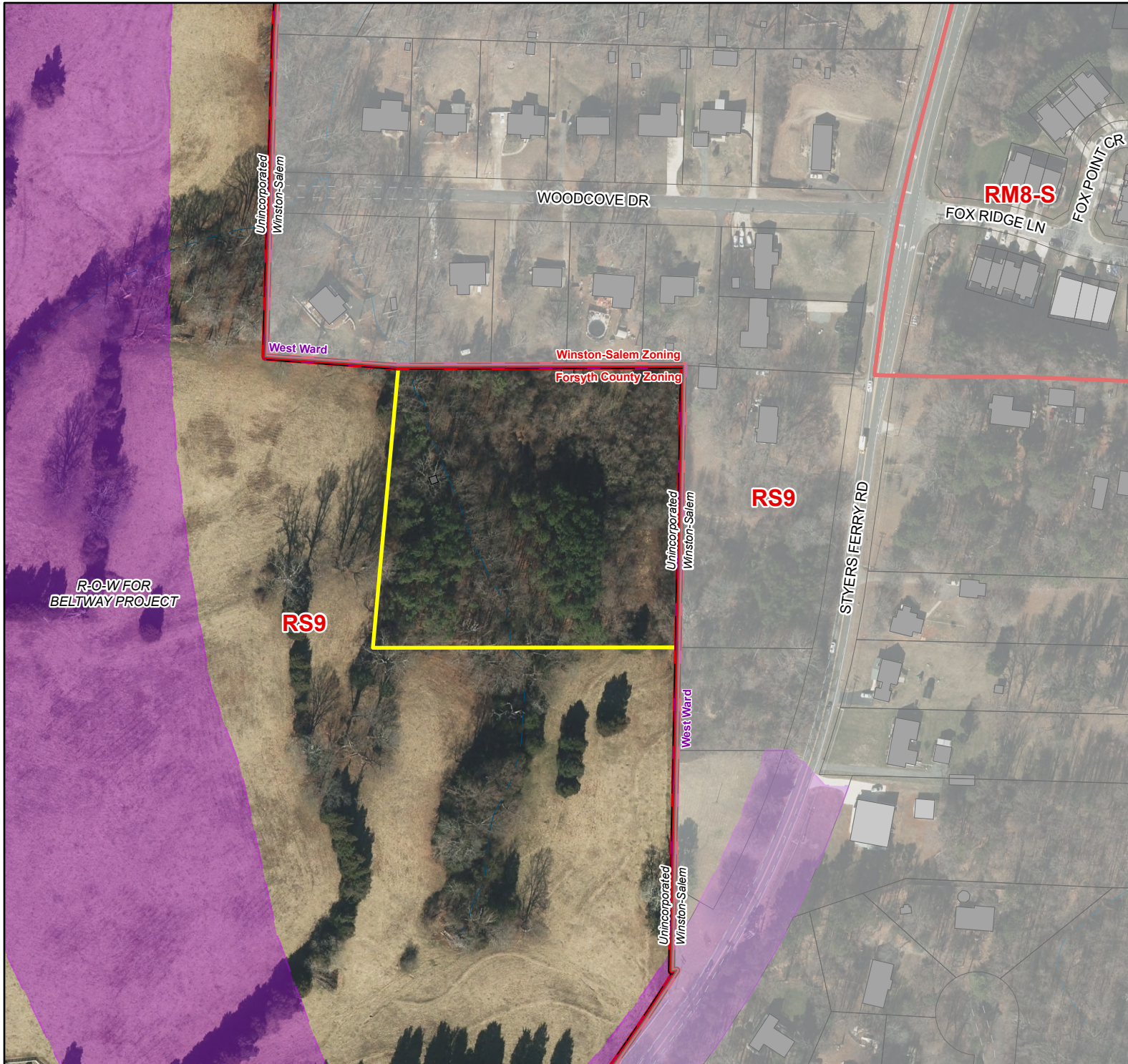


# PROPOSED VOLUNTARY ANNEXATION

Contiguous Property to the City of Winston-Salem

**NAME:** 4595 Styers Ferry Rd

**PIN(S):** A Portion of  
5895-23-2820.000



**SCALE:** 1" represents 200'

**GMA:** 3

**ACRES:** 4.015

**MAP(S):** 5895.03