



1 Overall Front Elevation
Scale: 1" = 20'-0"



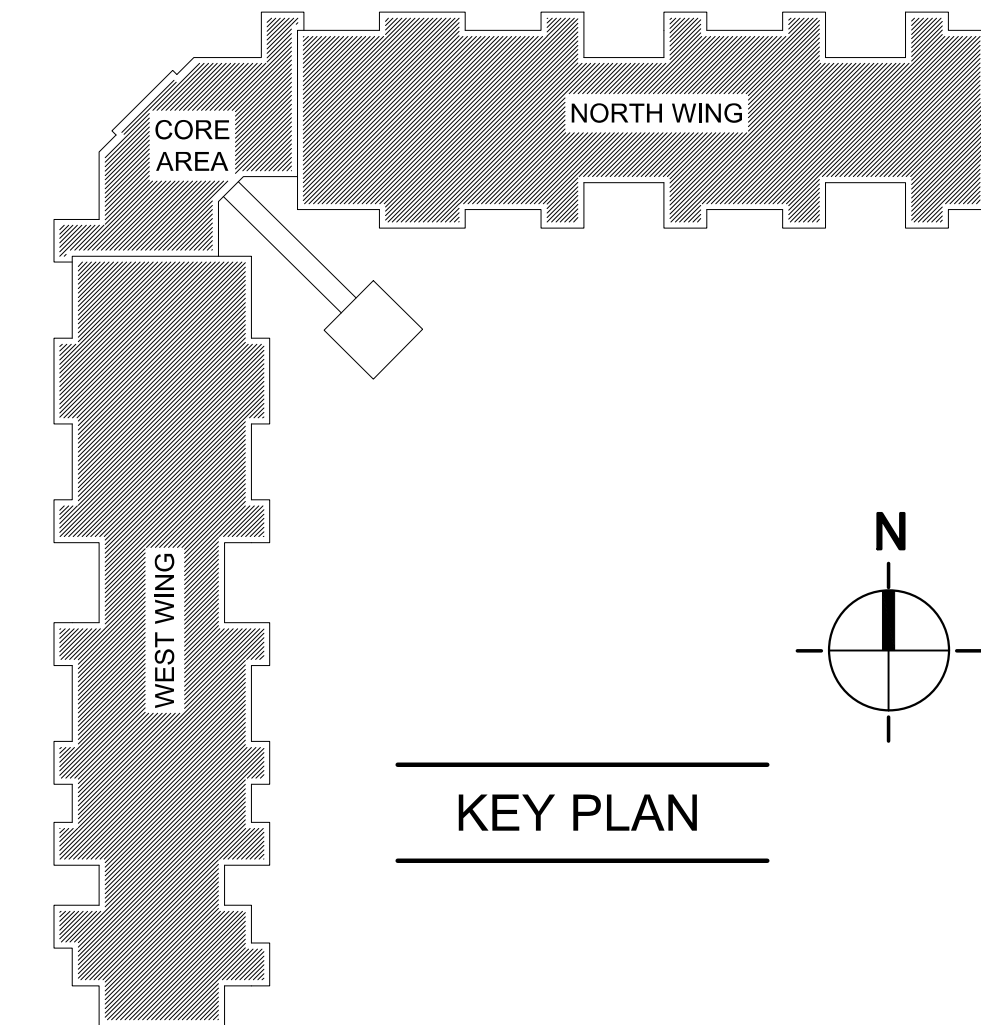
2 Partial Front Elevation - North Wing
Scale: 3/32" = 1'-0"



3 Partial Front Elevation - West Wing
Scale: 3/32" = 1'-0"



4 Partial Front Elevation - Core Area
Scale: 3/32" = 1'-0"



NOT FOR CONSTRUCTION

CONSULTANTS

PROJECT

The Villas at Wilshire
Winston-Salem, North Carolina
20-420.00

REVISIONS

DATE

DATE: January 24, 2020
ISSUE FOR: NCHFA Application

SET #

SHEET

Exterior Elevations
- Front Elevation
- Overall
- Partial

#

A 3.1
TOTAL SHEETS IN SET: _____ DRAWN BY: _____
CHECKED BY: _____



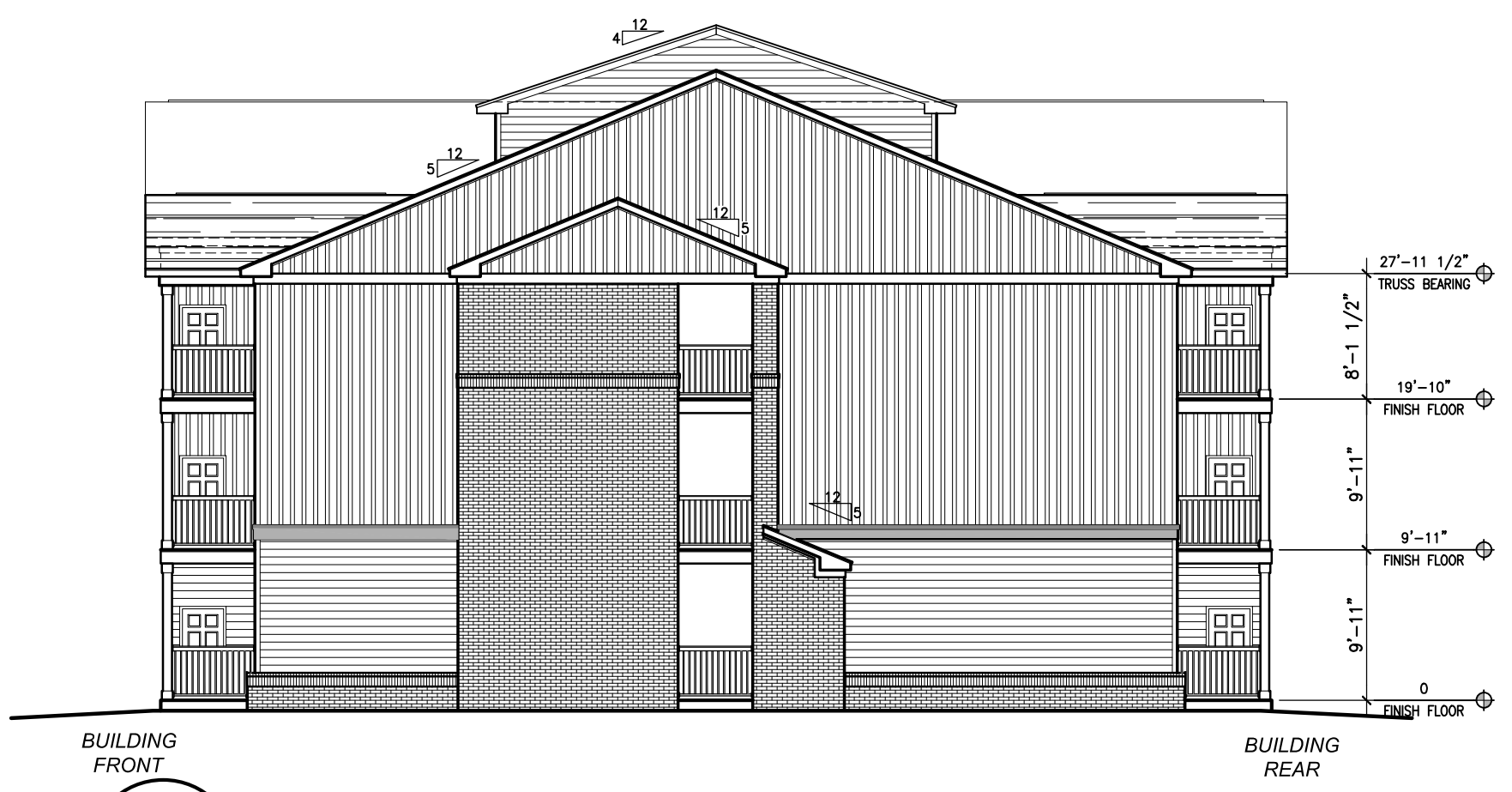
1 Overall Rear Elevation
Scale: 1" = 20'-0"



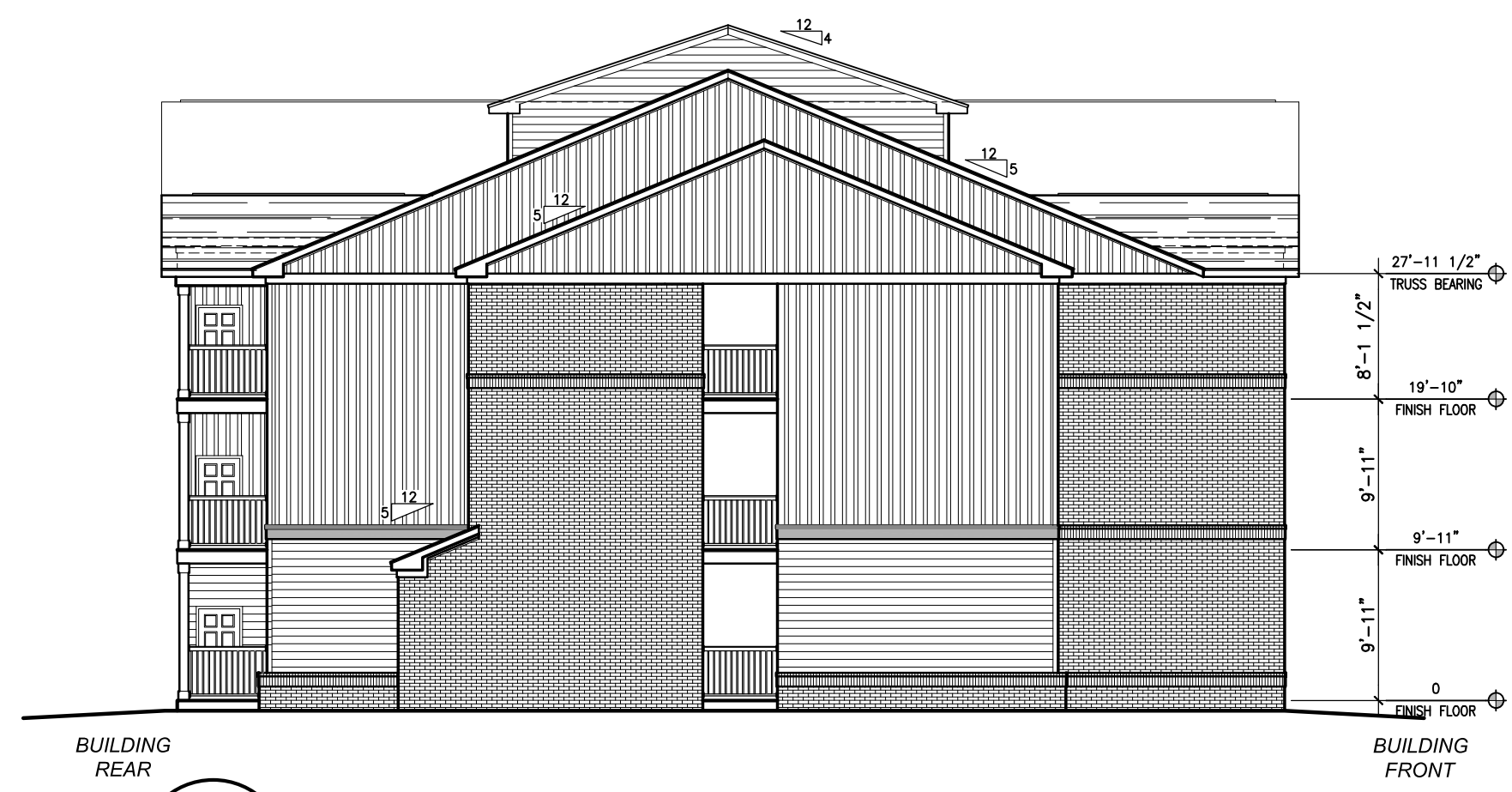
2 Partial Rear Elevation - West Wing
Scale: 3/32" = 1'-0"



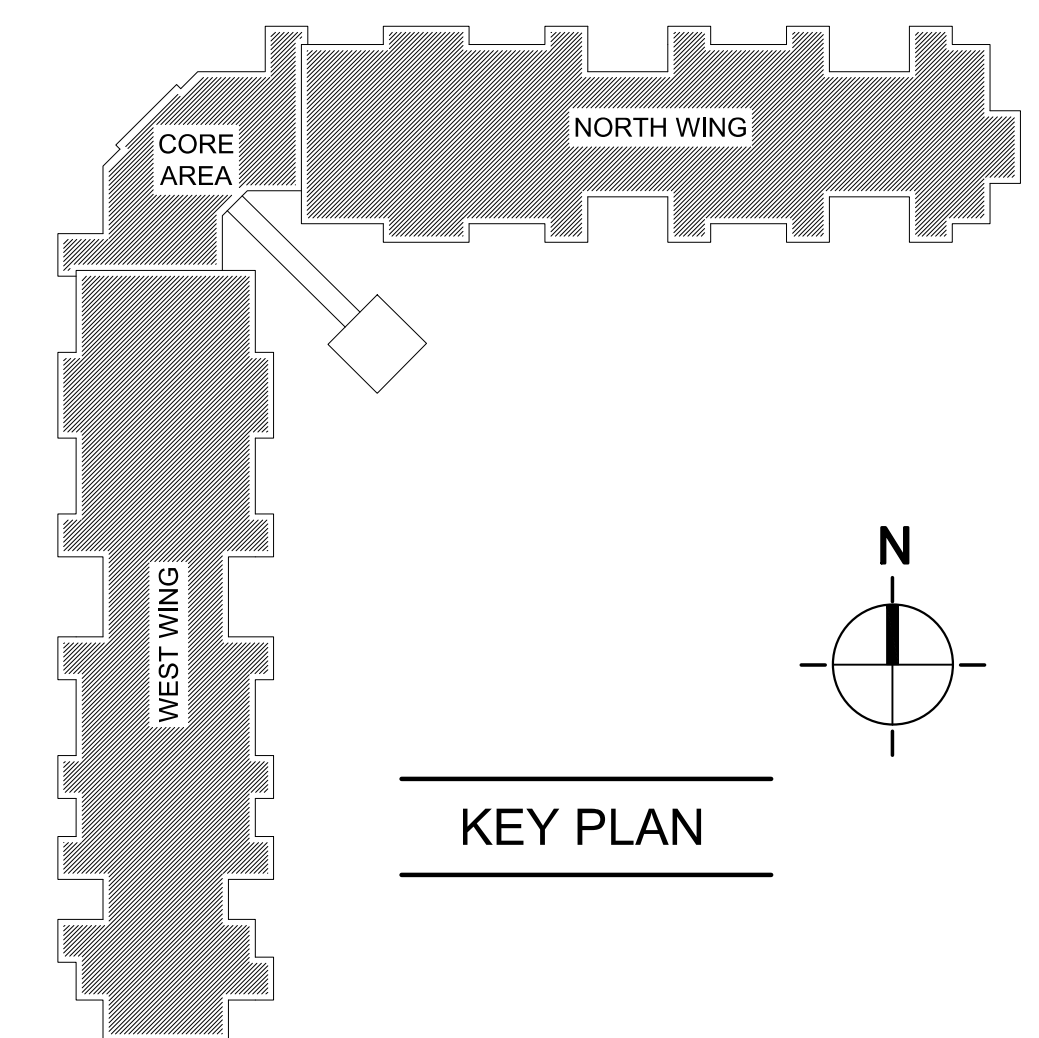
3 Partial Rear Elevation - North Wing
Scale: 3/32" = 1'-0"



4 North Wing End Elevation
Scale: 3/32" = 1'-0"



5 West Wing End Elevation
Scale: 3/32" = 1'-0"



NOT FOR CONSTRUCTION

SEALS

CONSULTANTS

PROJECT

The Villas at Wilshire

Winston-Salem, North Carolina

20-420.00

REVISIONS

DATE

DATE: January 24, 2020
ISSUE FOR: NCHFA Application

SET #

SHEET

Exterior Elevations
- Rear Elevation
- Overall
- Partial
- North & west End

A 3.2

TOTAL SHEETS IN SET: DRAWN BY: CHECKED BY: