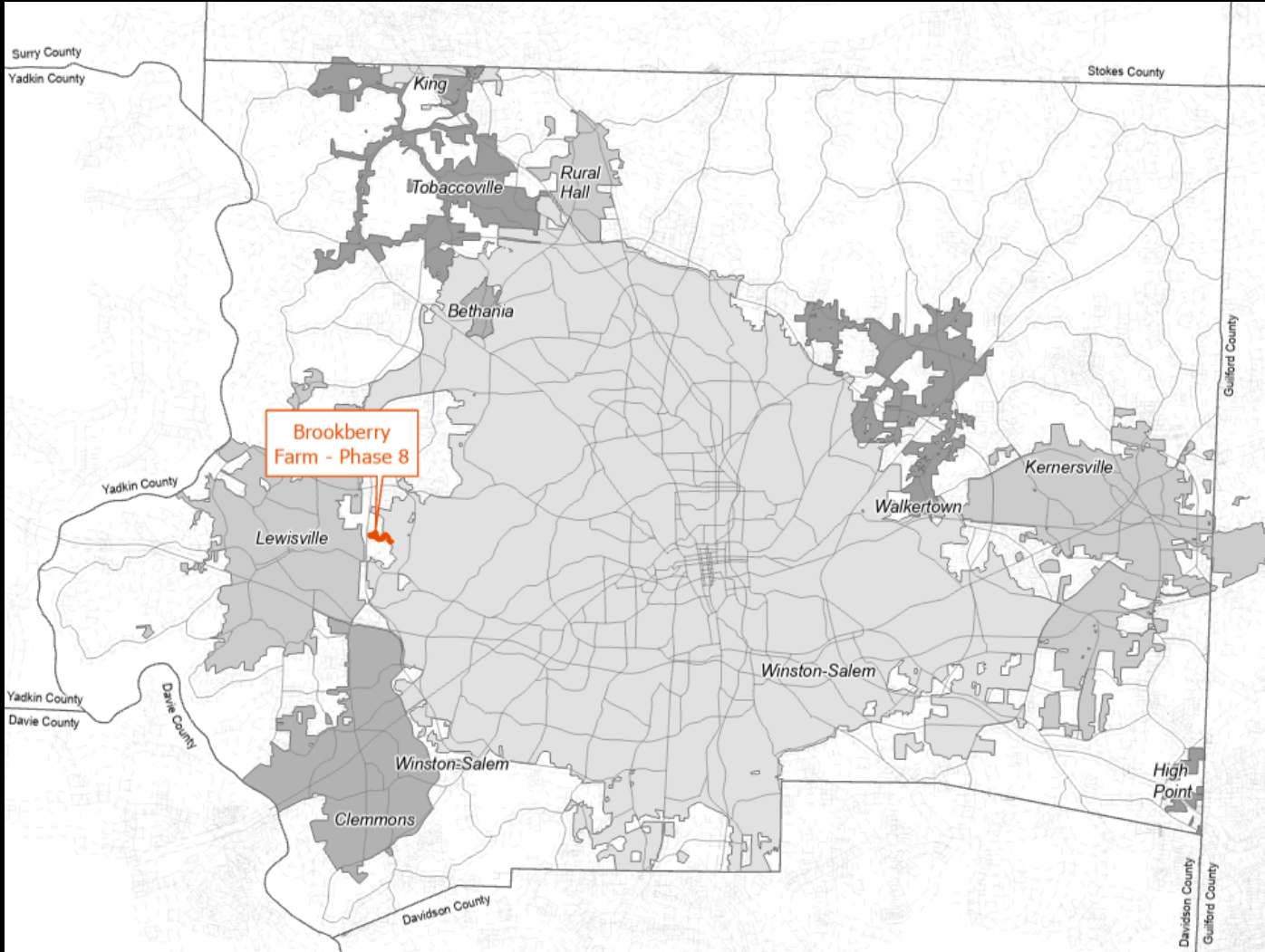


Brookberry Farm – Phase 8

Annexation Request

- Petitioner: Brookberry Farm, LLC
- Request: Consideration of a Petition for the Voluntary Annexation of approximately 26.118 Acres located west of the confluence of Brookberry Farm Circle and Rosewind Lane.

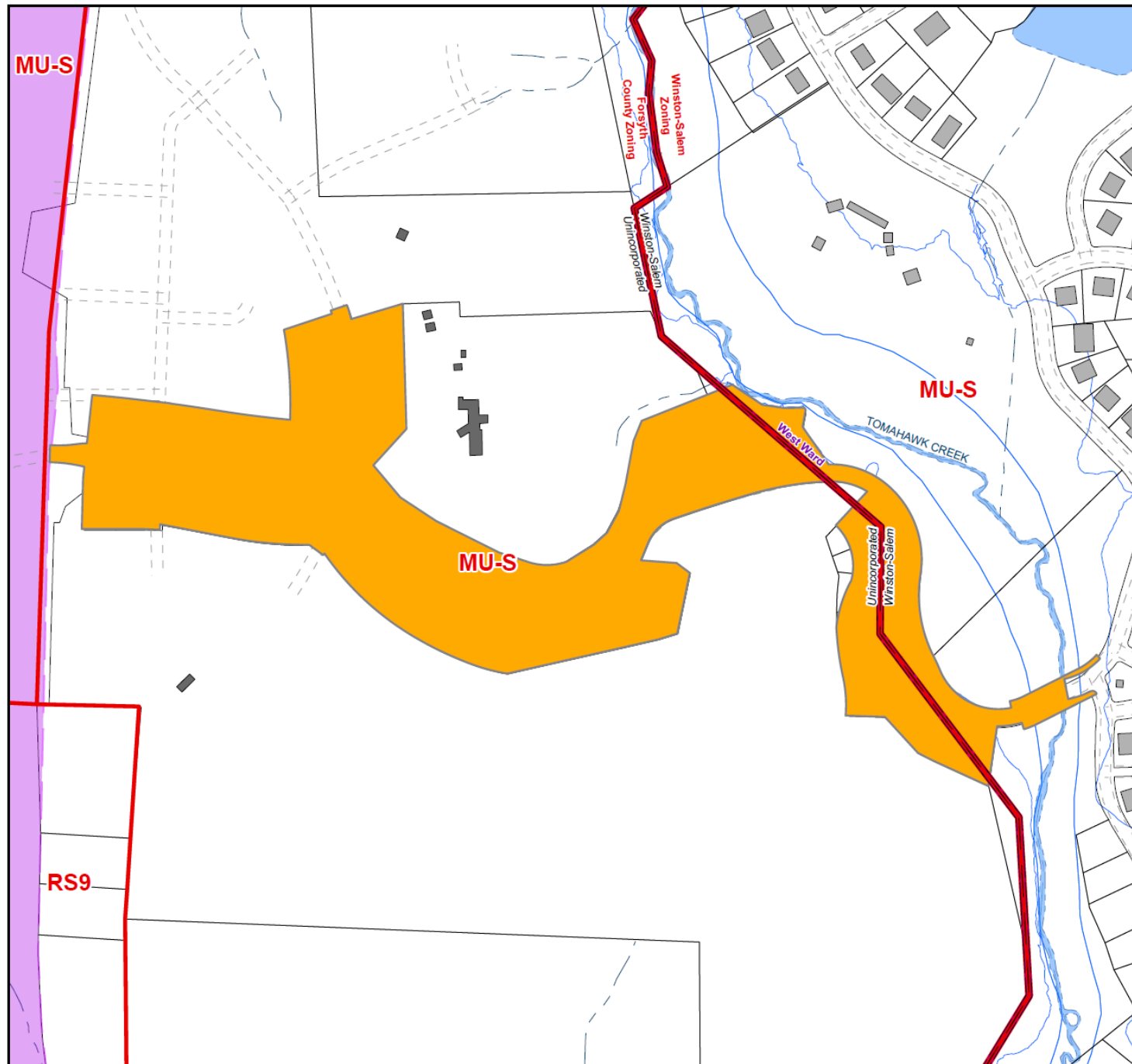
Brookberry Farm – Phase 8 Summary



Consists of 42 Parcel PINs

Parcel is partially located in the
West Ward

This property is contiguous
with the existing Winston-
Salem City Limits



PROPOSED VOLUNTARY ANNEXATION

Contiguous Property to the City of Winston-Salem

NAME: Brookberry Farm Phase 8

PIN(S): 5895-39-9669.000
 5895-29-7850.000
 5895-39-9889.000
 5895-29-8745.000
 5896-10-8104.000
 5896-30-4371.000
 5895-49-0509.000
 5895-29-9744.000
 5896-30-2290.000
 5895-49-0592.000
 5895-39-3940.000
 5896-20-3622.000
 5895-49-2452.000
 5895-39-2851.000
 5895-29-6854.000
 5896-20-4045.000
 5896-20-1141.000
 5896-20-0162.000
 5896-10-9135.000
 5896-10-9346.000
 5896-10-8317.000
 5895-39-9870.000
 5895-39-0755.000
 5896-20-3100.000
 5896-10-7111.000
 5896-20-1322.000
 5896-10-7431.000
 5896-20-0103.000
 5896-20-2311.000
 5896-20-0334.000
 5896-20-5428.000
 5896-30-6326.000
 5895-29-5869.000
 5896-30-9150.000
 5896-20-3228.000
 5896-30-3288.000
 5895-39-9999.000
 5895-39-1758.000
 5895-29-5907.000
 5896-20-2120.000
 5896-20-3349.000
 5896-20-3531.000

SCALE: 1" represents 400'

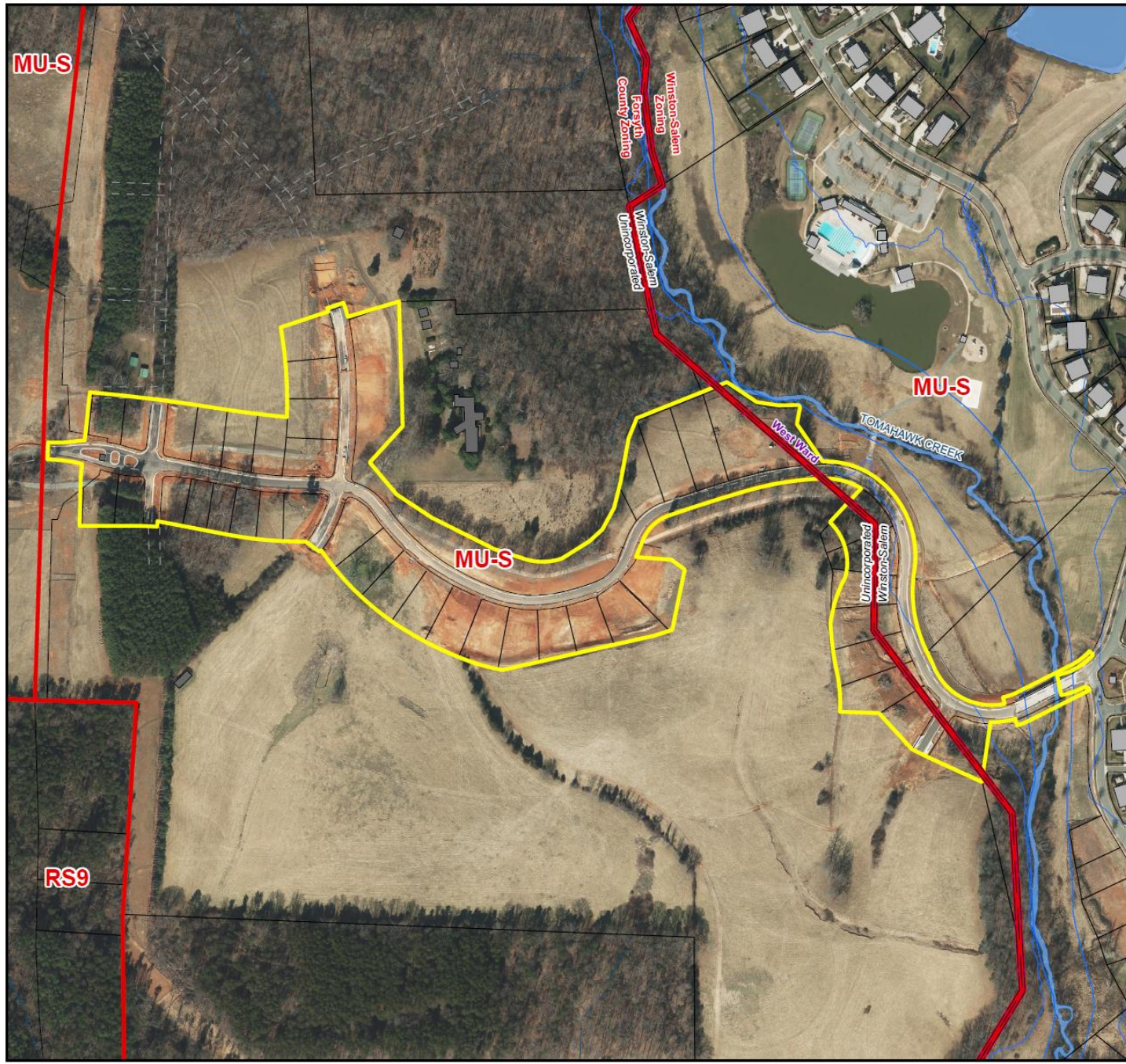
GMA: 3

ACRES: 26.118

MAP(S): 5895.01; 5896.03

Location Map Brookberry Farm Phase 8





PROPOSED VOLUNTARY ANNEXATION

Contiguous Property to the City of Winston-Salem

NAME: Brookberry Farm Phase 8

- PIN(S):**
- 5895-39-9669.000
 - 5895-29-7850.000
 - 5895-39-9889.000
 - 5895-29-8745.000
 - 5896-10-8104.000
 - 5896-30-4371.000
 - 5895-49-0509.000
 - 5895-29-9744.000
 - 5896-30-2290.000
 - 5895-49-0592.000
 - 5895-39-3940.000
 - 5896-20-3622.000
 - 5895-49-2452.000
 - 5895-39-2851.000
 - 5895-29-6854.000
 - 5896-20-4045.000
 - 5896-20-1141.000
 - 5896-20-0162.000
 - 5896-10-9135.000
 - 5896-10-9346.000
 - 5896-10-8317.000
 - 5895-39-9870.000
 - 5895-39-0755.000
 - 5896-20-3100.000
 - 5896-10-7111.000
 - 5896-20-1322.000
 - 5896-10-7431.000
 - 5896-20-0103.000
 - 5896-20-2311.000
 - 5896-20-0334.000
 - 5896-20-5428.000
 - 5896-30-6326.000
 - 5895-29-5869.000
 - 5896-30-9150.000
 - 5896-20-3228.000
 - 5896-30-3288.000
 - 5895-39-9999.000
 - 5895-39-1758.000
 - 5895-29-5907.000
 - 5896-20-2120.000
 - 5896-20-3349.000
 - 5896-20-3531.000

SCALE: 1" represents 400'

GMA: 3

ACRES: 26.118

MAP(S): 5895.01; 5896.03

Aerial Image Brookberry Farm Phase 8



Brookberry Farm – Phase 8

City of Winston-Salem Interdepartmental Comments

- The Police Department does not predict any special issues or concerns regarding accessibility; however, additional call volume could strain departmental resources given current staffing challenges
- The Sanitation Division has determined that City collection services can be provided with current resources
- Planning has no concerns regarding the annexation and impacts to property development plans

Brookberry Farm – Phase 8

City of Winston-Salem Interdepartmental Comments

- The Fire Department requests that hydrants be installed (current hydrant is 2,500 feet). There are also some concerns regarding response time with existing resources
- The Office of Budget and Performance Management have no issues concerning this request's effect on the City's operating budget

Brookberry Farm – Phase 8

Recommendation

- Staff has verified the ownership, property description, zoning, and acreage of the request
- Staff recommends approval of the voluntary annexation request and that a public hearing date be set for this petition