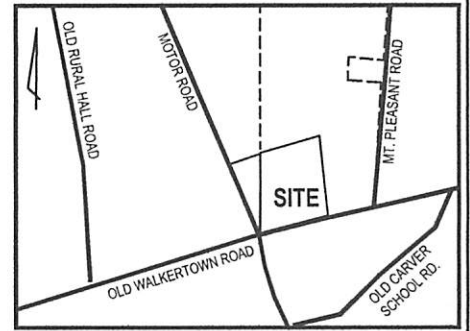
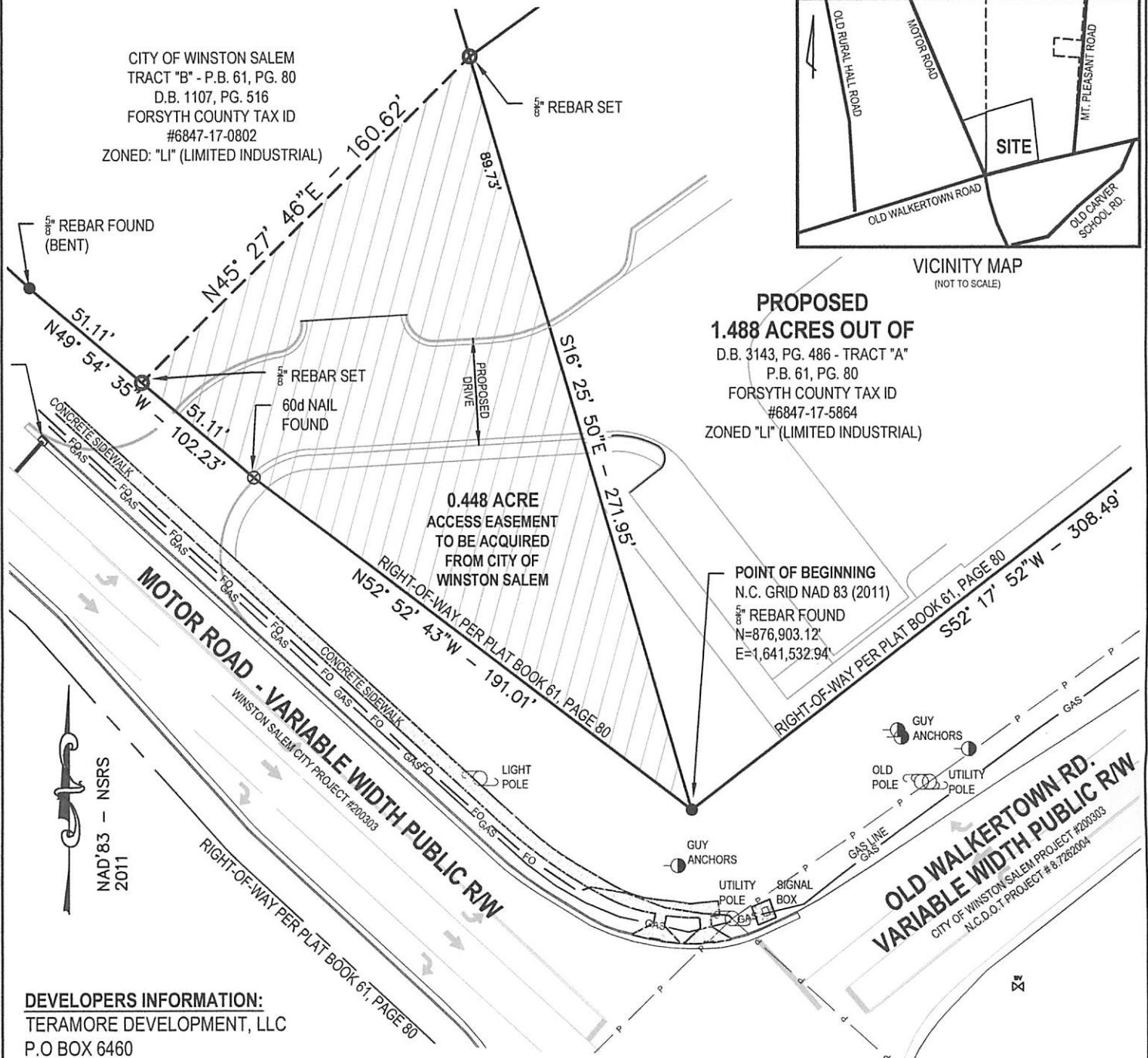


CITY OF WINSTON SALEM  
 TRACT "B" - P.B. 61, PG. 80  
 D.B. 1107, PG. 516  
 FORSYTH COUNTY TAX ID  
 #6847-17-0802  
 ZONED: "LI" (LIMITED INDUSTRIAL)



VICINITY MAP  
 (NOT TO SCALE)

**PROPOSED**  
**1.488 ACRES OUT OF**  
 D.B. 3143, PG. 486 - TRACT "A"  
 P.B. 61, PG. 80  
 FORSYTH COUNTY TAX ID  
 #6847-17-5864  
 ZONED "LI" (LIMITED INDUSTRIAL)



**DEVELOPERS INFORMATION:**  
 TERAMORE DEVELOPMENT, LLC  
 P.O BOX 6460  
 THOMASVILLE GEORGIA, 31758  
 PHONE: 229-516-4289

THIS MAP MAY NOT BE A CERTIFIED SURVEY  
 AND HAS NOT BEEN REVIEWED BY A LOCAL  
 GOVERNMENT AGENCY FOR COMPLIANCE  
 WITH ANY APPLICABLE LAND DEVELOPMENT  
 REGULATIONS AND HAS NOT BEEN REVIEWED  
 FOR COMPLIANCE WITH RECORDING  
 REQUIREMENTS FOR PLATS.

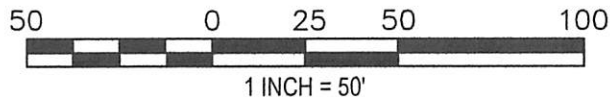


EXHIBIT MAP OF  
**0.448 ACRE - PROPOSED ACCESS EASEMENT TO BE  
 ACQUIRED FROM CITY OF WINSTON SALEM**  
 FOR  
**TERAMORE DEVELOPMENT, LLC**

DATE OF MAP: APRIL 16, 2019  
 DATE OF SURVEY: DEC 5-8, 2018  
 WINSTON TOWNSHIP  
 FORSYTH COUNTY, N.C.  
 PROJECT #3160342018  
 DRAWN BY: DAL  
 FIELD CREW: TO

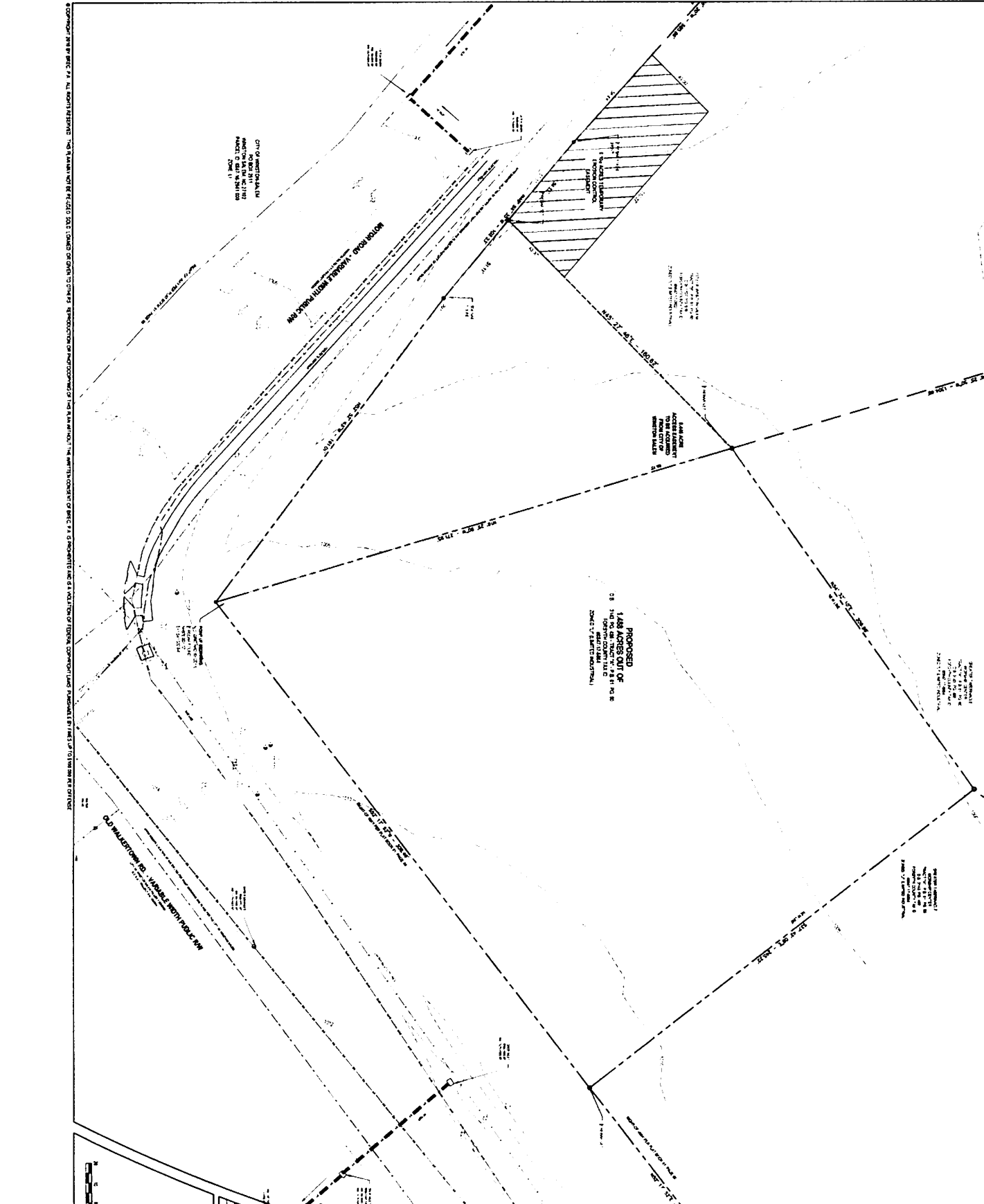


**BLUE RIDGE GEOMATICS, PA**

SURVEYING | GIS | MAPPING  
 NCBELS SURVEYING FIRM #C-3576

126 EXECUTIVE DRIVE - SUITE 220  
 WALKERSBORO, NC 28697  
 PHONE: 336-844-4688  
 http://brgeom.com

DANNY A. LONG, PLS  
 126 EXECUTIVE DRIVE - SUITE 220  
 WALKERSBORO, NC 28697  
 PHONE: 828-713-8814  
 danny@brgeom.com



© COPYRIGHT 2013 BY THE ARCHITECT. THIS DOCUMENT IS THE PROPERTY OF THE ARCHITECT AND IS NOT TO BE REPRODUCED OR TRANSMITTED IN ANY FORM OR BY ANY MEANS, ELECTRONIC OR MECHANICAL, INCLUDING PHOTOCOPYING, RECORDING, OR BY ANY INFORMATION STORAGE AND RETRIEVAL SYSTEM. ALL RIGHTS RESERVED.

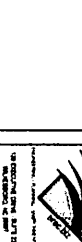
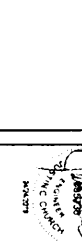
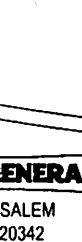
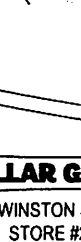
DATE	REVISIONS

PREPARED FOR:  
 TERAMORE DEVELOPMENT LLC  
 PO BOX 6440  
 THOMASVILLE, GA 31758

EXISTING CONDITIONS

**DOLLAR GENERAL**  
 WINSTON SALEM  
 STORE #20342

SCALE: 1" = 20'  
 SHEET: 0002



DO NOT SCALE - PLANS MUST BE RECEIVED AS A COMPLETE SET