

# WOOTEN FARMS

## NEIGHBORHOOD MEETING NOTICE

We will be hosting a neighborhood meeting in August to solicit feedback as well as answer questions from the community. Optional in-person and/or virtual meeting available.

**WHEN:** Monday, August 23<sup>rd</sup>, 2021  
6:00 PM – 7:30 PM EST

**LOCATION:** Sedge Garden Recreation Center  
401 Robbins Road  
Winston-Salem, NC 27107  
*Ballroom*

**VIRTUAL:** Link and login information will be emailed after RSVP is received  
*(in-person attendees are not required to RSVP)*

**RSVP TO:** [sshirley@american-ea.com](mailto:sshirley@american-ea.com)  
by August 20<sup>th</sup>

*\*Face masks are required in all city buildings including recreation centers regardless of vaccination status at this time and will be provided at the meeting.\**

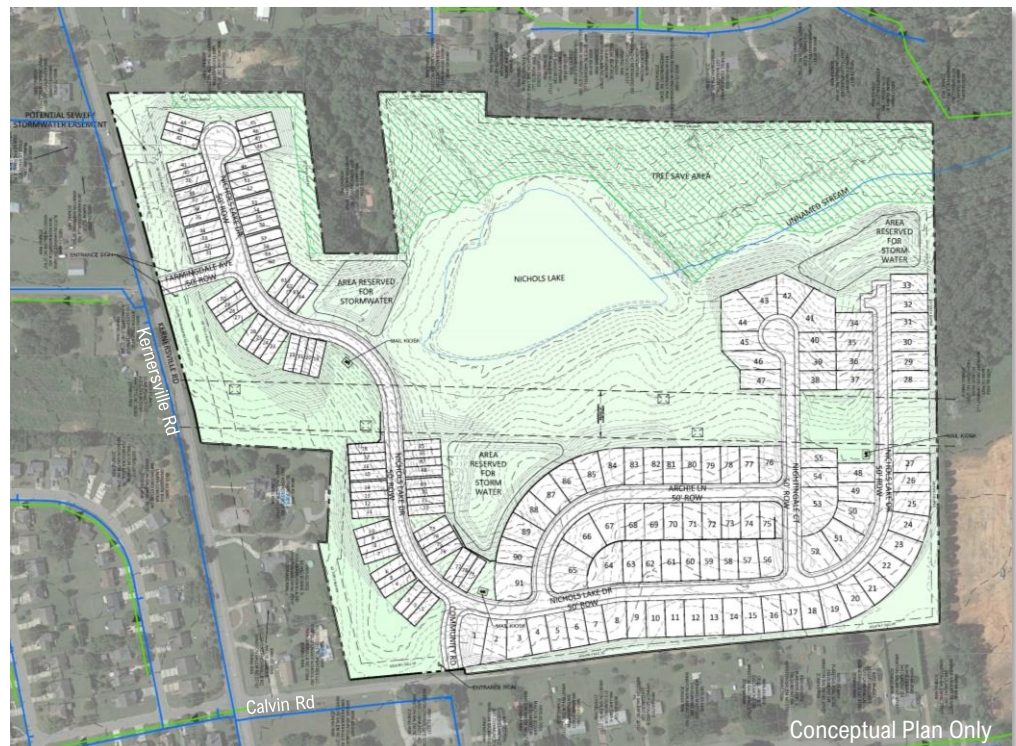
### SITE INFORMATION

**Location** 210 Calvin Rd  
**Pin #:** 6855727706  
**Acreage:** 63.95± Acres  
**Current Zoning:** RS-9  
(Single-Family Residential)  
**Proposed Zoning:** RM-5-SU  
(Multi-Family Residential)

### WOOTEN FARMS

This proposed community will provide 170 new homes. The project developer is currently in discussions with both regional and national home-builders to provide a mix of for-sale single-family homes and townhomes.

Perimeter buffers will surround the site, retaining the existing vegetation where possible. Nichols Lake and the stream will be buffered, allowing for ample open space throughout the site. The main entrance to the neighborhood will be located on Kernersville Road; a secondary entrance will be from Community Road off Calvin Road.



Questions and/or comments may be directed to:

Sara Shirley  
[sshirley@american-ea.com](mailto:sshirley@american-ea.com) | 704.749.1021

