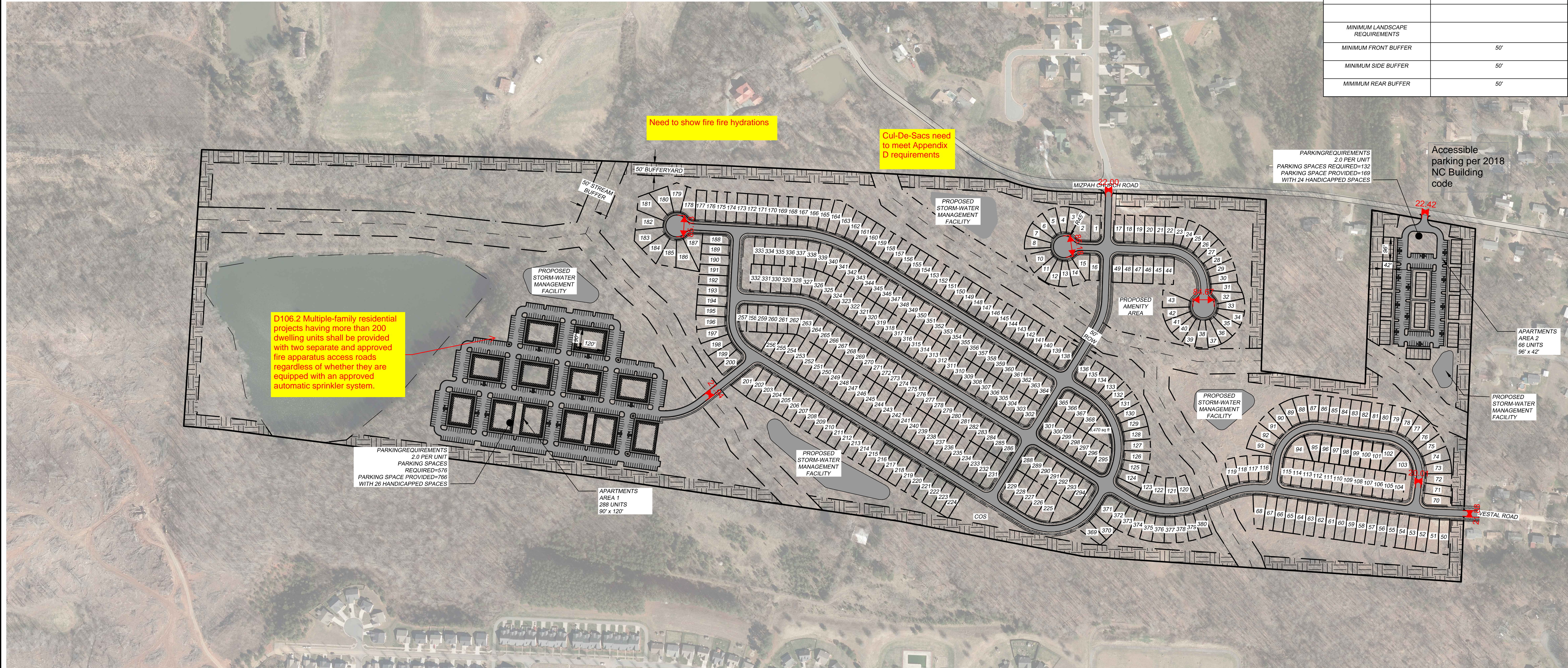


DENSITY	
APARTMENTS AREA 1	288 UNITS
APARTMENTS AREA 2	66 UNITS
SINGLE FAMILY HOMES	380 UNITS
TOTAL UNITS	734 UNITS

SIZE AND DEVELOPMENT DATA	
JURISDICTION	WINSTON-SALEM
TAX PARCEL(S)	68096493000
ZONING	MU-S
TOTAL AREA	165.225 ACRES
SETBACKS FOR MU-S DISTRICT	
MINIMUM FRONT SETBACK	20'
MINIMUM CORNER/SIDE SETBACK	5'
MINIMUM REAR SETBACK	20'
MINIMUM LOT SIZE	N/A
MINIMUM LOT WIDTH	N/A
MAXIMUM PERMITTED BUILDING HEIGHT	N/A
MINIMUM LANDSCAPE REQUIREMENTS	
MINIMUM FRONT BUFFER	50'
MINIMUM SIDE BUFFER	50'
MINIMUM REAR BUFFER	50'

Tract PIN: 6809-96-6493



D106.2 Multiple-family residential projects having more than 200 dwelling units shall be provided with two separate and approved fire apparatus access roads regardless of whether they are equipped with an approved automatic sprinkler system.

Need to show fire hydrations

Cul-De-Sacs need to meet Appendix D requirements

PARKING REQUIREMENTS
2.0 PER UNIT
PARKING SPACES REQUIRED=132
PARKING SPACE PROVIDED=169
WITH 24 HANDICAPPED SPACES

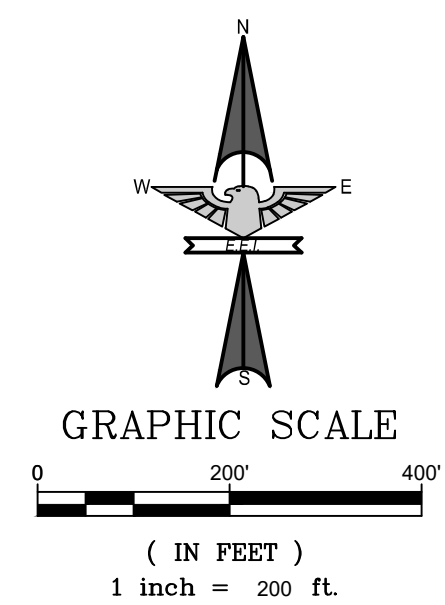
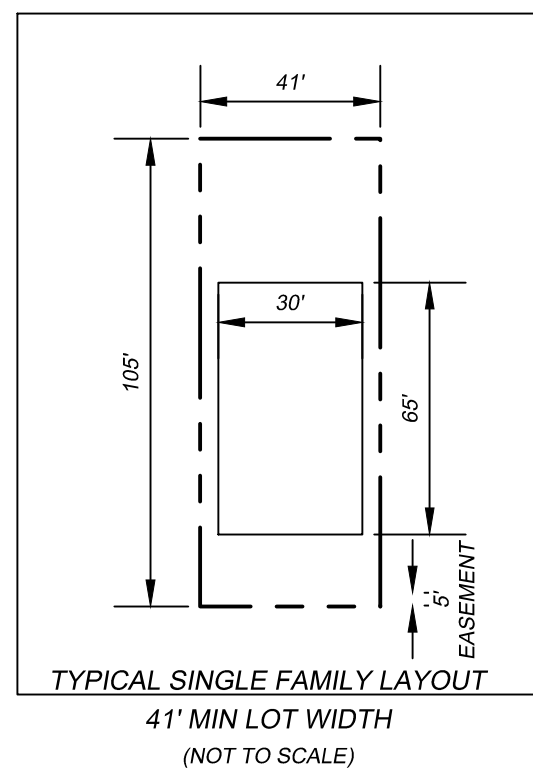
Accessible parking per 2018 NC Building code

PARKING REQUIREMENTS
2.0 PER UNIT
PARKING SPACES REQUIRED=576
PARKING SPACE PROVIDED=789
WITH 26 HANDICAPPED SPACES

APARTMENTS AREA 1
288 UNITS
90' x 120'

APARTMENTS AREA 2
66 UNITS
96' x 42'

PROPOSED STORM-WATER MANAGEMENT FACILITY



ENGINEERING

FIRM LICENSE # C-0873
P.O. BOX 351
Alpharetta, GA 30009
Indian Trail, NC 28079
(704) 982-4222
(678) 338-0640
www.egsengineer.com

NO.	DATE	BY	ISSUE

RURAL HALL
WINSTON-SALEM, FORSYTH COUNTY, NC 27045

CAROLINA DEVELOPMENT
2627 BRECKENRIDGE CENTRE DR.
MONROE, NC 28110

CONCEPTUAL SITE PLAN

DESIGNED BY	DAM	DRAWN BY	DAM	CHECKED BY	BLD
AS SHOWN					
DATE	8/13/2019				
JOB NUMBER	6863				

PRELIMINARY
NOT FOR
CONSTRUCTION

Sheet
CSP - 1