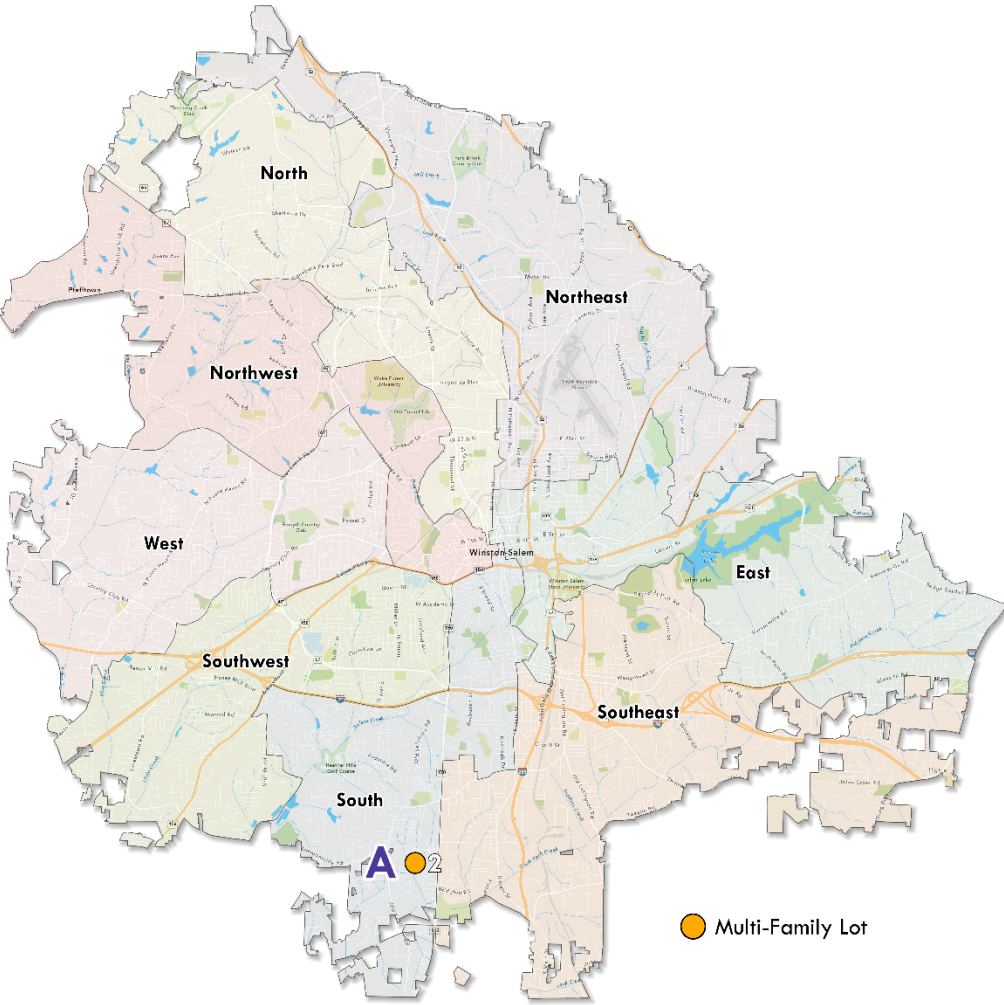
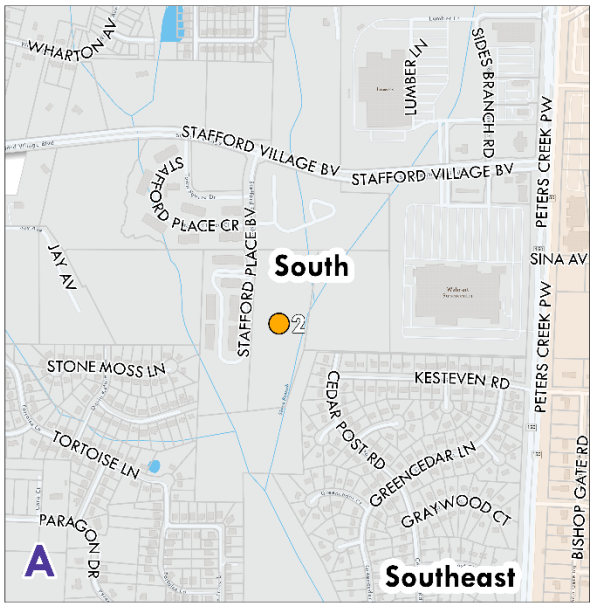


# Exhibit C



● Multi-Family Lot



## PROJECT INFORMATION

NUMBER	CONTRACTOR	ADDRESS	PIN	LOTTYPE
2	Workforce Solutions	3613 Stafford Place Blvd	6823-51-3070.000	Multi-Family Lot



Map Disclaimer:  
This product is for informational purposes and may not have been processed for, or be suitable for legal, engineering, or surveying purposes. All property boundaries are approximate and do not represent owner-issued surveys. This product has been produced by the City of Winston-Salem, also called Systems, for the purpose of geographic information. We warrant, as provided for in the disclaimer, the accuracy, completeness or suitability of this data.