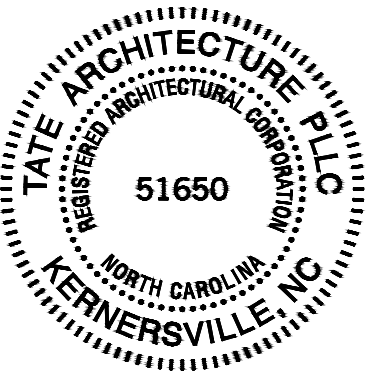




tate architecture pllc
 p.o. box 1784
 kernersville_nc 27285
 336_413_0601
 neil@tatearchitecture.com



JOHN NEIL TATE
 ONE
 Gateway Commons
 New Condominium Development
 Phase I
 04.02.2019

These documents, as instruments of service, and the design represented are the property of the tate architecture pllc. Use of these documents or the design without the written authorization of the architect, tate architecture pllc is prohibited.

commission:
 7M Ventures, Inc.
 ONE 77
 Gateway Commons
 New Condominium Development
 Phase I
 Salem Ave
 Winston-Salem, NC

commission number:
 2018-24

issue date:
 04.02.2019
 Site Plan Amendment Package

revisions:

sheet title:
 Exterior Elevation

sheet number:

AD100.0.0

EXTERIOR MATERIAL LEGEND

MARK	MATERIAL
EM1	Exterior Wall #1 <ul style="list-style-type: none"> Brick Veneer Pattern: Running Bond Paint: N/A Color: Red / As Shown
EM2	Exterior Wall #2 <ul style="list-style-type: none"> Architectural Metal Panel Pattern: As Shown Paint: N/A Color: Dark Gray / As Shown
EM3	Exterior Wall #3 <ul style="list-style-type: none"> Architectural Cementitious Panel EIFS Pattern: As Shown Paint: N/A Color: Light Gray / As Shown
EM4	Exterior Wall #4 <ul style="list-style-type: none"> Aluminum Storefront System Series: See Details Pattern: See Elevations Color: Clear Anodized Finish
EM5	Exterior Wall #5 <ul style="list-style-type: none"> Aluminum Architectural Grill System Series: See Details Pattern: See Elevations Color: Clear Anodized Finish
EM6	Exterior Wall #6 <ul style="list-style-type: none"> Metal Architectural Roll / Security Door Series: See Details Pattern: See Elevations Color: TBD



EM2

EM4

EM1

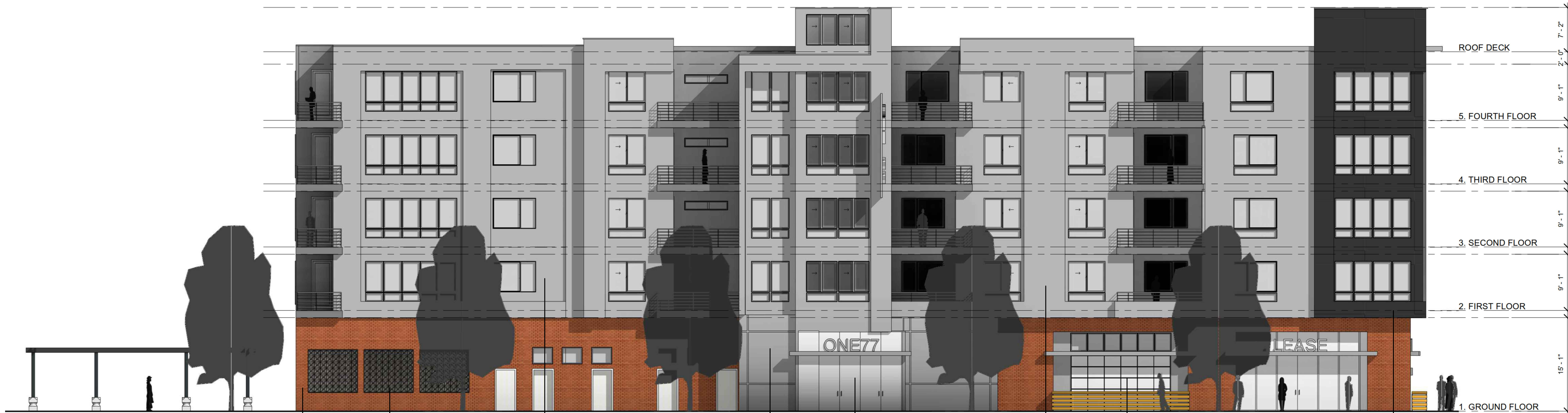
EM4

EM3

EM6

EM3

AD100.0.1
 Exterior Elevation
 Side -[Pedestrian | Vehicular Plaza]
 Scale: nts



EM1

EM5

EM3

EM3

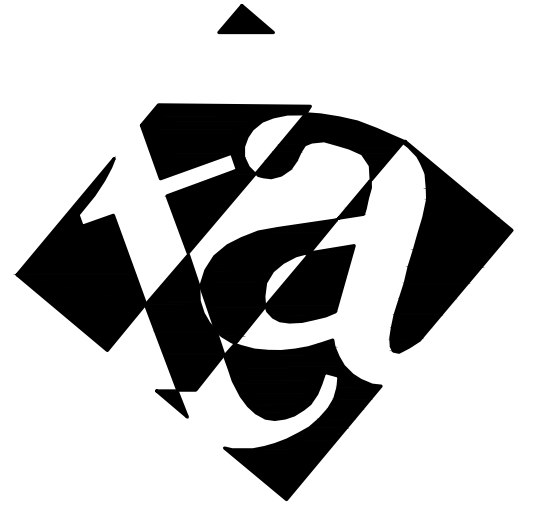
EM4

EM3

EM4

EM2

AD100.0.0
 Exterior Elevation
 Front -[Pedestrian Plaza to Salem Greenway]
 Scale: nts



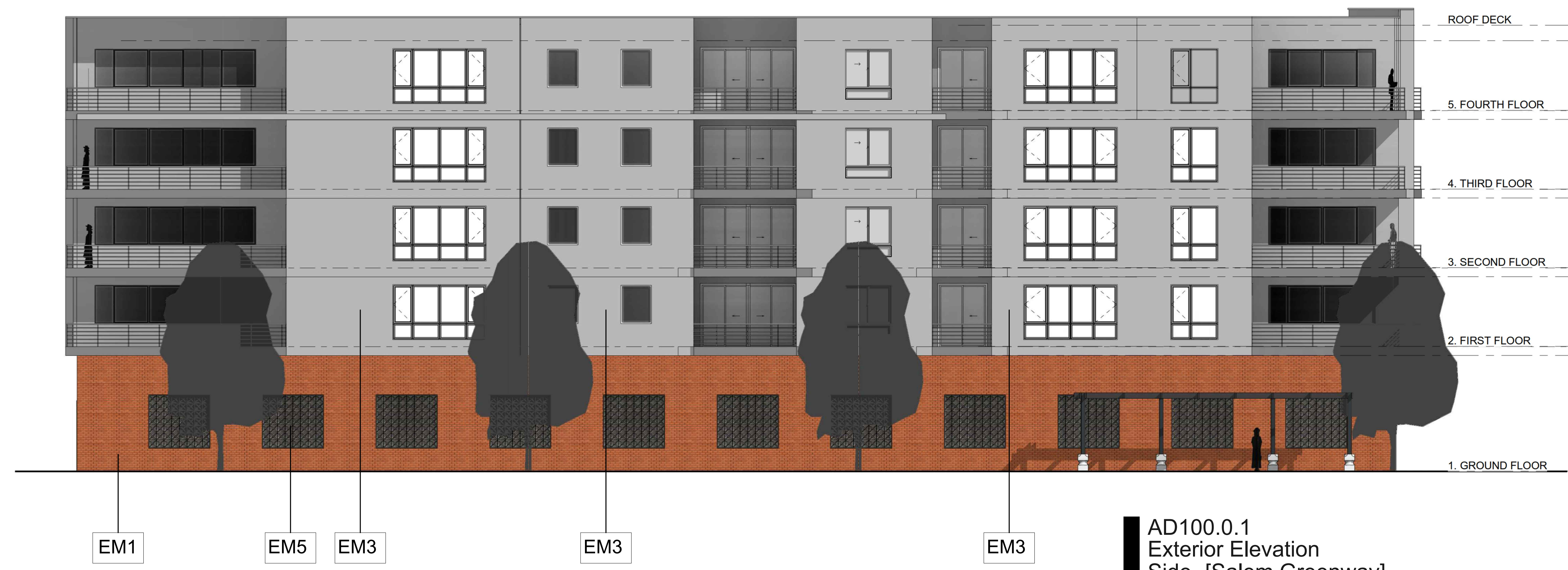
tate architecture pllc
 p.o. box 1784
 kernersville_nc 27285
 336_413_0601
 neil@tatearchitecture.com



NEIL TATE
 ARCHITECT
 7M VENTURES, INC.
 ONE 77
 GATEWAY COMMONS
 NEW CONDOMINIUM DEVELOPMENT
 PHASE I
 04.02.2019

EXTERIOR MATERIAL LEGEND

MARK	MATERIAL
EM1	Exterior Wall #1 <ul style="list-style-type: none"> Brick Veneer Pattern: Running Bond Paint: N/A Color: Red / As Shown
EM2	Exterior Wall #2 <ul style="list-style-type: none"> Architectural Metal Panel Pattern: As Shown Paint: N/A Color: Dark Gray / As Shown
EM3	Exterior Wall #3 <ul style="list-style-type: none"> Architectural Cementitious Panel EIFS Pattern: As Shown Paint: N/A Color: Light Gray / As Shown
EM4	Exterior Wall #4 <ul style="list-style-type: none"> Aluminum Storefront System Series: See Details Pattern: See Elevations Color: Clear Anodized Finish
EM5	Exterior Wall #5 <ul style="list-style-type: none"> Aluminum Architectural Grill System Series: See Details Pattern: See Elevations Color: Clear Anodized Finish
EM6	Exterior Wall #6 <ul style="list-style-type: none"> Metal Architectural Roll / Security Door Series: See Details Pattern: See Elevations Color: TBD



AD100.0.1
 Exterior Elevation
 Side -[Salem Greenway]
 Scale: nts



AD100.1.0
 Exterior Elevation
 Rear -[Parking Field]
 Scale: nts

These documents, as instruments of service, and the design represented are the property of the site architecture pllc. Use of these documents or the design without the written authorization of the architect, tate architecture pllc is prohibited.

commission:
 7M Ventures, Inc.
 ONE 77
 Gateway Commons
 New Condominium Development
 Phase I
 Salem Ave
 Winston-Salem, NC

commission number:
 2018-24

issue date:
 04.02.2019
 Site Plan Amendment Package

revisions:

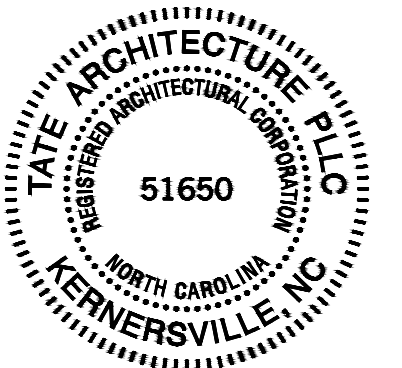
sheet title:
 Exterior Elevation

sheet number:
 AD100.0.0



tate architecture pllc

p.o. box 1784
kernersville_nc 27285
336_413_0601
neil@tatearchitecture.com



NEIL TATE
ARCHITECT
7M VENTURES, INC.
ONE 77
Gateway Commons
New Condominium Development
Phase I
04.02.2019



These documents, as instruments of service, and the design represented are the property of the tate architecture pllc. Use of these documents or the design without the written authorization of the architect, tate architecture pllc is prohibited.

commission:
7M Ventures, Inc.
ONE 77
Gateway Commons
New Condominium Development
Phase I
Salem Ave
Winston-Salem, NC

commission number:
2018-24

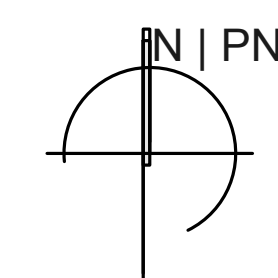
issue date:
04.02.2019
Site Plan Amendment Package

revisions:

sheet title:
Exterior Perspective

sheet number:

AD200.0.0

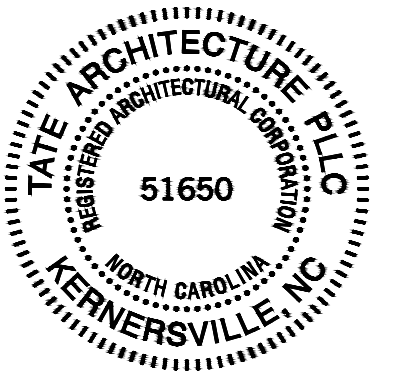


AD200.0.0
Exterior Perspective
View #1 - [Pedestrian | Vehicular Plaza]
Scale: nts



tate architecture pllc

p.o. box 1784
kernersville_nc 27285
336_413_0601
neil@tatearchitecture.com



NEIL TATE
7M VENTURES, INC.
ONE 77
Gateway Commons
New Condominium Development
Phase I
04.02.2019



These documents, as instruments of service, and the design represented are the property of the tate architecture pllc. Use of these documents or the design without the written authorization of the architect, tate architecture pllc is prohibited.

commission:
7M Ventures, Inc.
ONE 77
Gateway Commons
New Condominium Development
Phase I
Salem Ave
Winston-Salem, NC

commission number:
2018-24

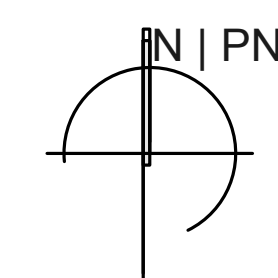
issue date:
04.02.2019
Site Plan Amendment Package

revisions:

sheet title:
Exterior Perspective

sheet number:

AD200.1.0



AD200.1.0
Exterior Perspective
View #2 - [Salem Greenway]
Scale: nts