

Natural Landscape Area Ordinance Update

February 2024

Sustainability Department

Current Ordinance

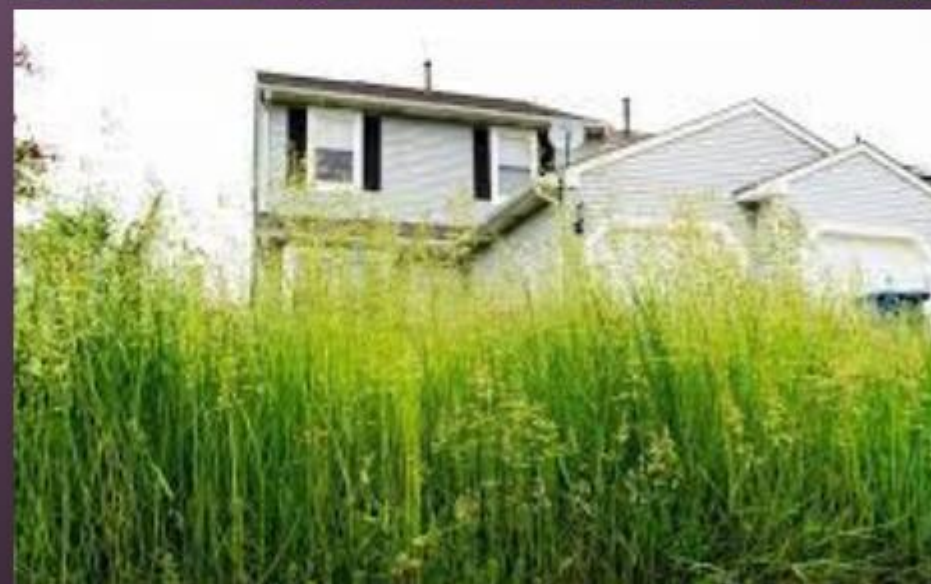
Any turf grass in your yard still needs to be mowed to stay under 8 inches

Make sure your natural landscape area is setback at least 20 feet from your property line

Natural landscape area can take up 50% or less of your yard

Make sure to use borders such as stones, low growing plants, or wood timber to create a perimeter to your cultivated space

Do you have a naturally scaped yard that exceeds these limitations? You may be exempt if your scape existed before 1975



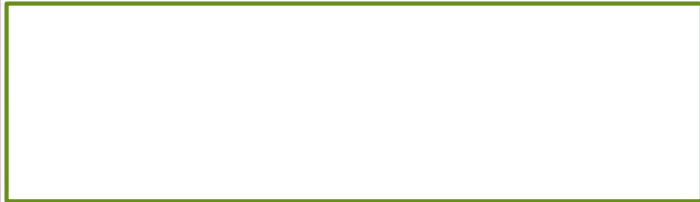
Benchmarked Cities

- ▶ Asheville:
 - ▶ Tiered requirements based on lot size
 - ▶ Registration: Application fee \$10; Sign charge \$35
- ▶ Hillsborough:
 - ▶ 10 ft setback
 - ▶ Not allowed between curb and sidewalk
 - ▶ No registration
- ▶ Greenbay, WI:
 - ▶ 3 ft setback
 - ▶ No Mow May
 - ▶ Registration

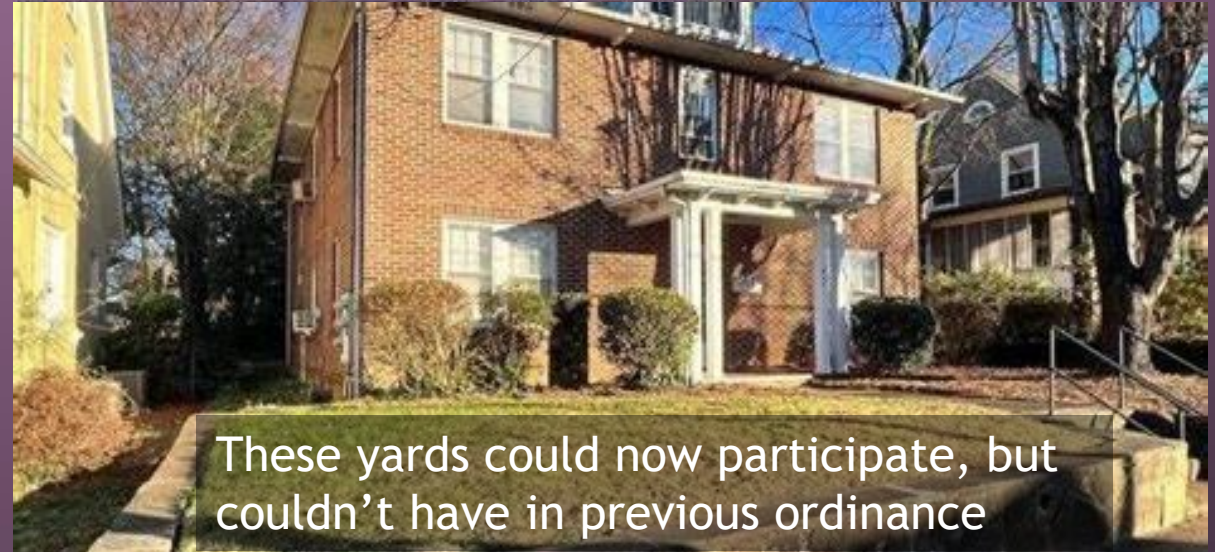
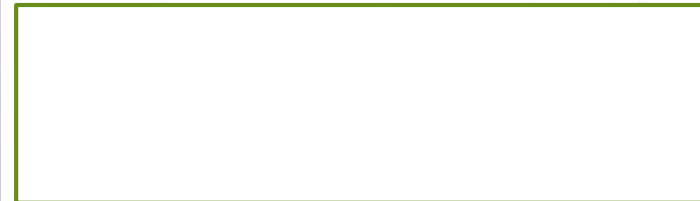
Revised Ordinance

Any turf grass in your yard still needs to be mowed to stay under 8 inches

Make sure your natural landscape area is setback at least **5 Ft** from your property line **Or sidewalk**



Make sure to use borders such as stones, low growing plants, or wood timber to create a perimeter to your cultivated space



These yards could now participate, but couldn't have in previous ordinance



Registration



Free online registration

Provide address

Plan & Plant List



Decide on signage

Acceptable signage list posted on registration website



Sustainability Dept approves → Shows up in GIS layer for code enforcement



Remove grass & Plant



In case of problems, 30 days to remedy or registration revoked (mowing required or enforced)

May reapply after 6 months



Approved Sign