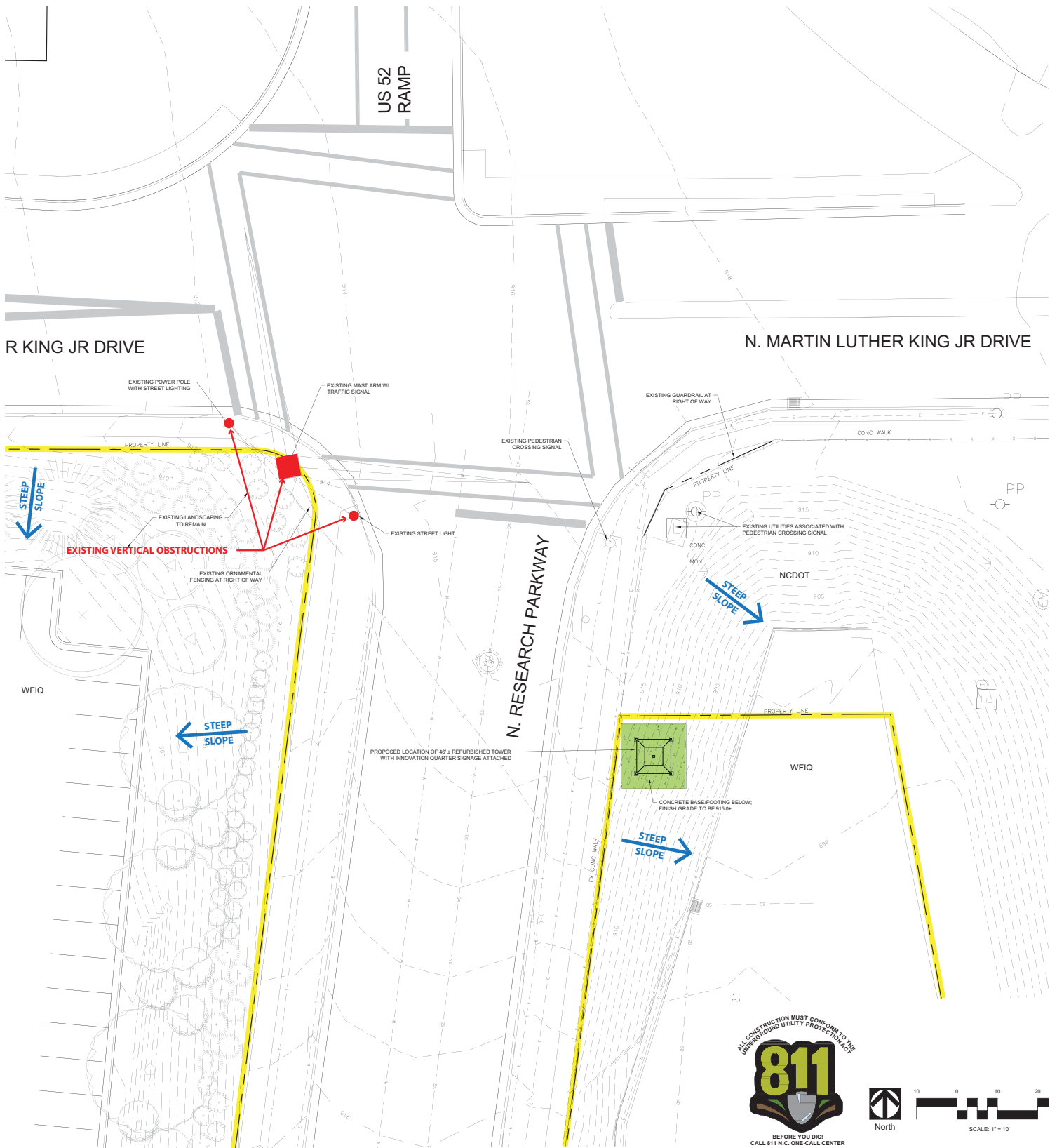


INNOVATION QUARTER SIGNAGE
LOCATION MAP



Proposed Tower Sign
at MLK Jr Drive &
Research Parkway

**INNOVATION QUARTER SIGNAGE
SITE CONSTRAINTS**







The tower, originally part of the RJ Reynolds Bailey Power Plant infrastructure, was located on the current site of Bailey Park. Three towers were salvaged and stored, to be repurposed in a prominent manner that celebrates the history and future of Innovation Quarter.

The proposed scope includes a substantial concrete foundation, minimal structural modifications, cleaning, painting, sign attachment and lighting. The tower structure, and it's concrete base will be on private property and not within the public right-of-way. The re-erected tower will be located at Martin Luther King Jr. Drive and Research Parkway, a prominent entrance into Innovation Quarter and Downtown Winston-Salem.