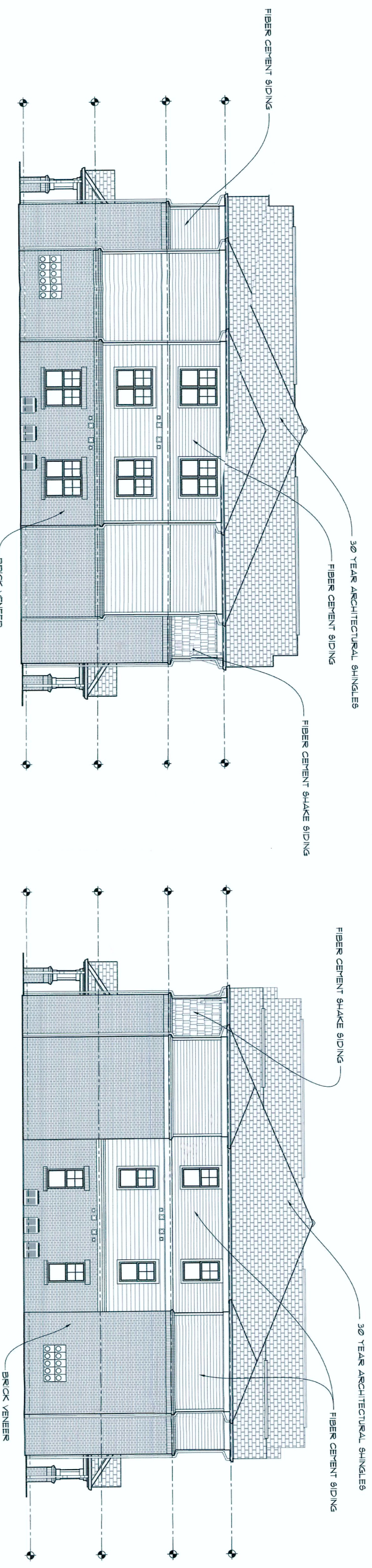


4 BUILDING 100 & 200 - REAR ELEVATIONS
1/8" = 1'-0"

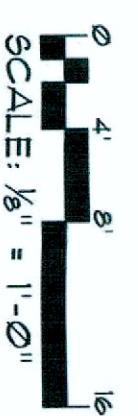


3 BUILDING 100 & 200 - SIDE ELEVATIONS
1/8" = 1'-0"

2 BUILDING 100 & 200 - SIDE ELEVATIONS
1/8" = 1'-0"

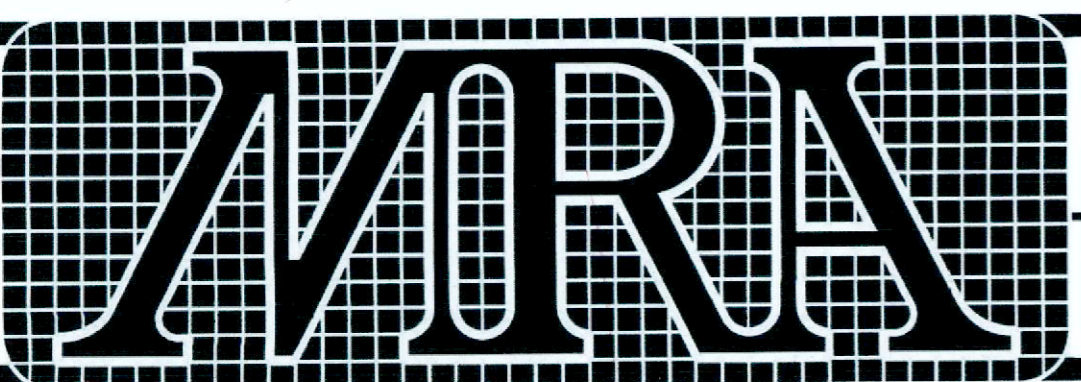


1 BUILDING 100 & 200 - FRONT ELEVATIONS
1/8" = 1'-0"



W-3366 Elevations

A8



MARTIN RILEY ASSOCIATES - ARCHITECTS, P.C.
215 CHURCH STREET SUITE 200 DECATUR GEORGIA 30030-3329 404-373-2800
ASPEN POINTE
WINSTON SALEM, NC

BUILDING 100 & 200 - ELEVATIONS

PROJECT	REVISIONS
2017-107	
DATE	
1-18-2018	
DRAWN BY / CHECKED BY	
MRL	