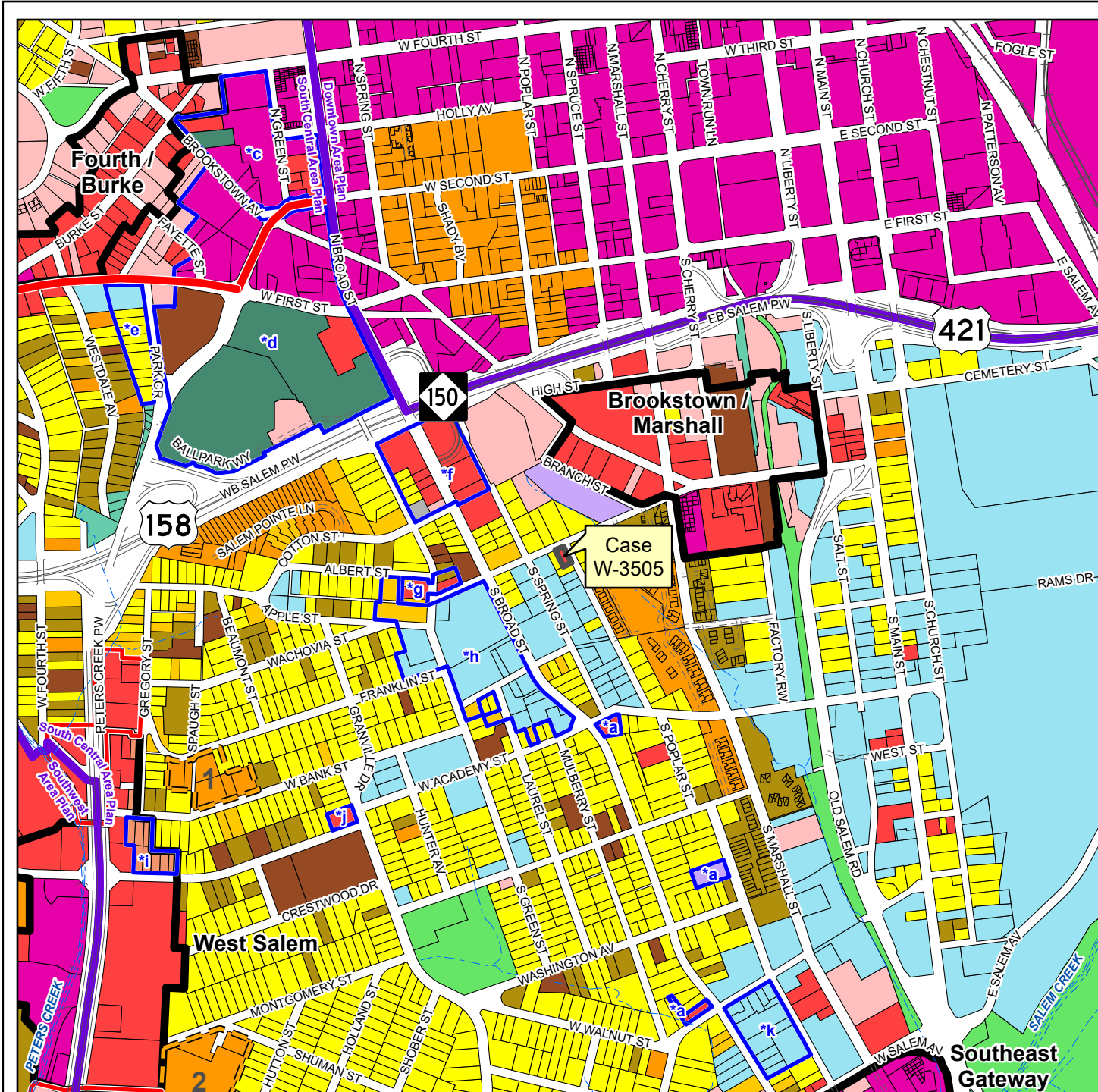


# W-3505 Area Plan Recommendations

South Central Winston-Salem Area Plan Update, 2013

(Proposed land uses shown are generalized. See area plan for specific recommendations.)



- Rezoning
- Activity Center
- Special Land Use Condition Areas

- Proposed Land Use**
- Single-Family Residential (0-8 Du/Ac)
  - Urban Residential Infill
  - Low-Density Attached Residential (0-8 DU/Ac)
  - Intermediate-Density Residential (8.1-18 DU/Ac)
  - High-Density Residential (over 18 DU/Ac)
  - Office
  - Office/Low-Intensity Commercial
  - Commercial
  - Mixed-Use Development
  - Industrial
  - Institutional
  - Park
  - Open space
  - Commercial Recreation
  - Utilities

- Proposed Growth Corridor**
- Urban Form - Commercial/Office/Multifamily

- Residential Opportunity Areas**
- Low-Density Attached Residential (0-8 DU/Ac)

