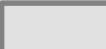
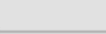
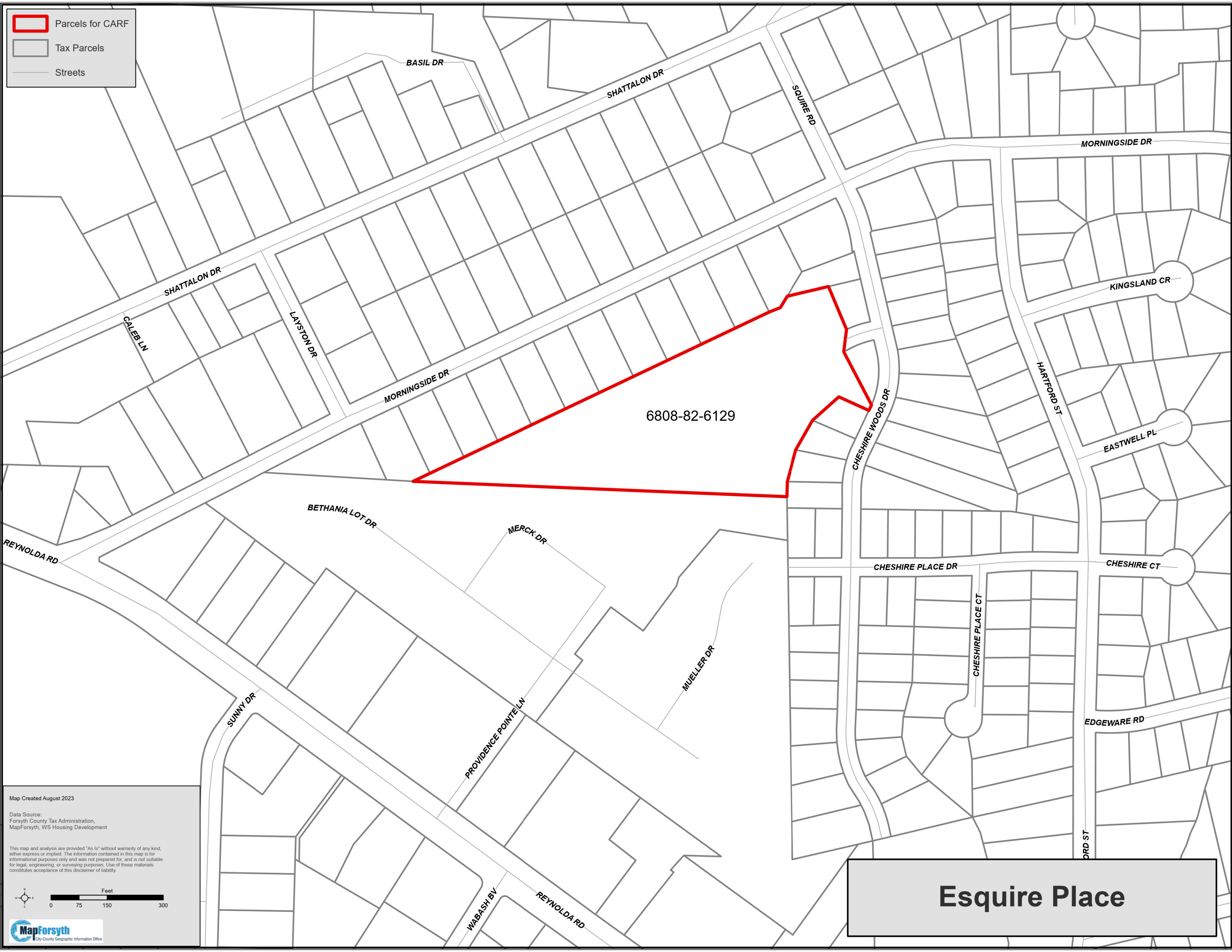
 Parcels for CARF
 Tax Parcels
 Streets




Esquire Place


Map Created August 2023

Data Source:
Forsyth County Tax Administration,
MapForsyth, WS Housing Development

This map and analysis are provided "As Is" without warranty of any kind, either express or implied. The information contained in this map is for informational purposes only and was not prepared for, and is not suitable for legal, engineering, or surveying purposes. Use of these materials constitutes acceptance of this disclaimer of liability.



0 75 150 300 Feet



MapForsyth
City-County Geographic Information Office