



Camel City Coach Company – Atlantic/Southern Greyhound Lines Garage

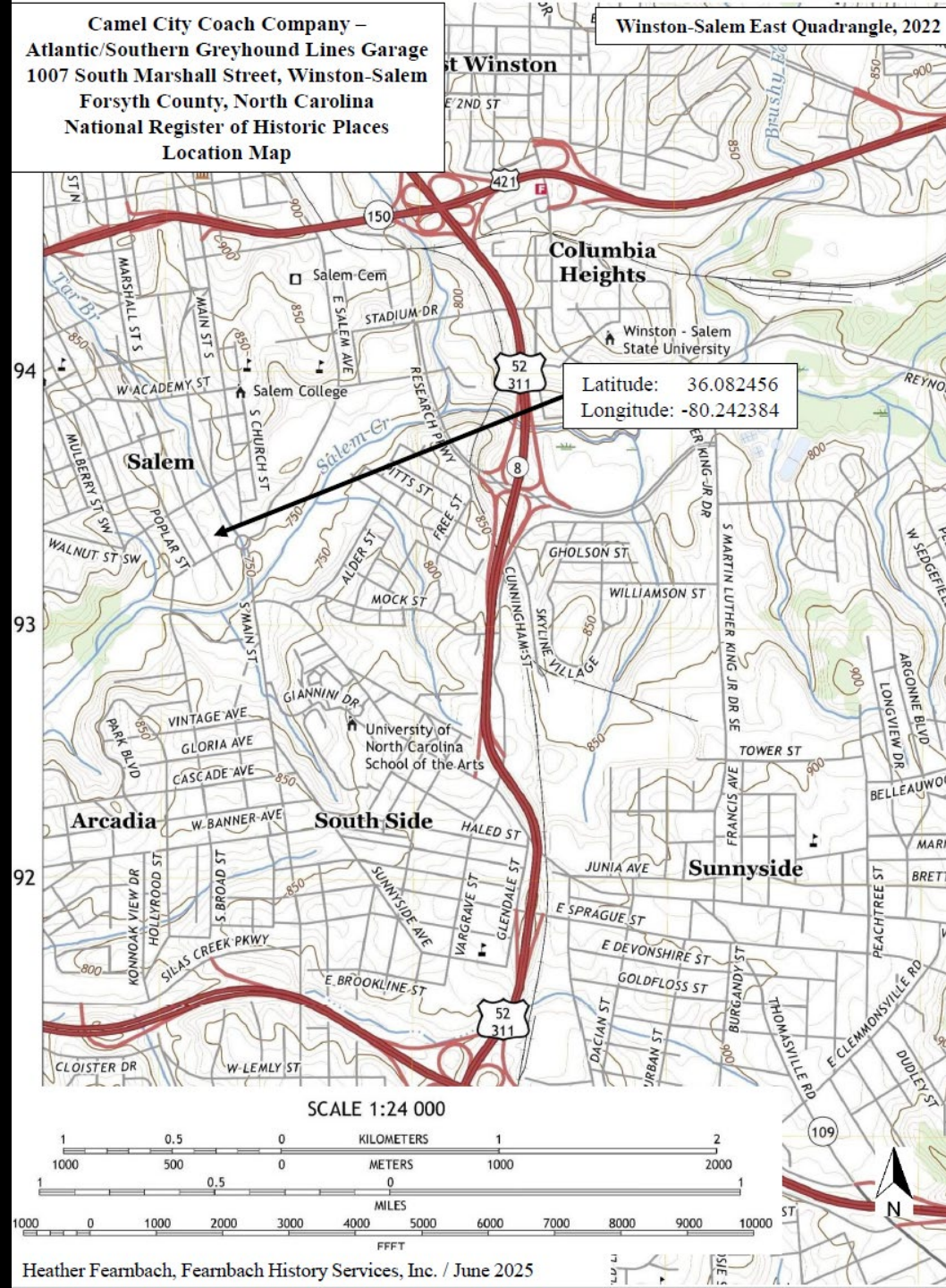
1007 South Marshall Street
Winston-Salem

National Register Nomination Review



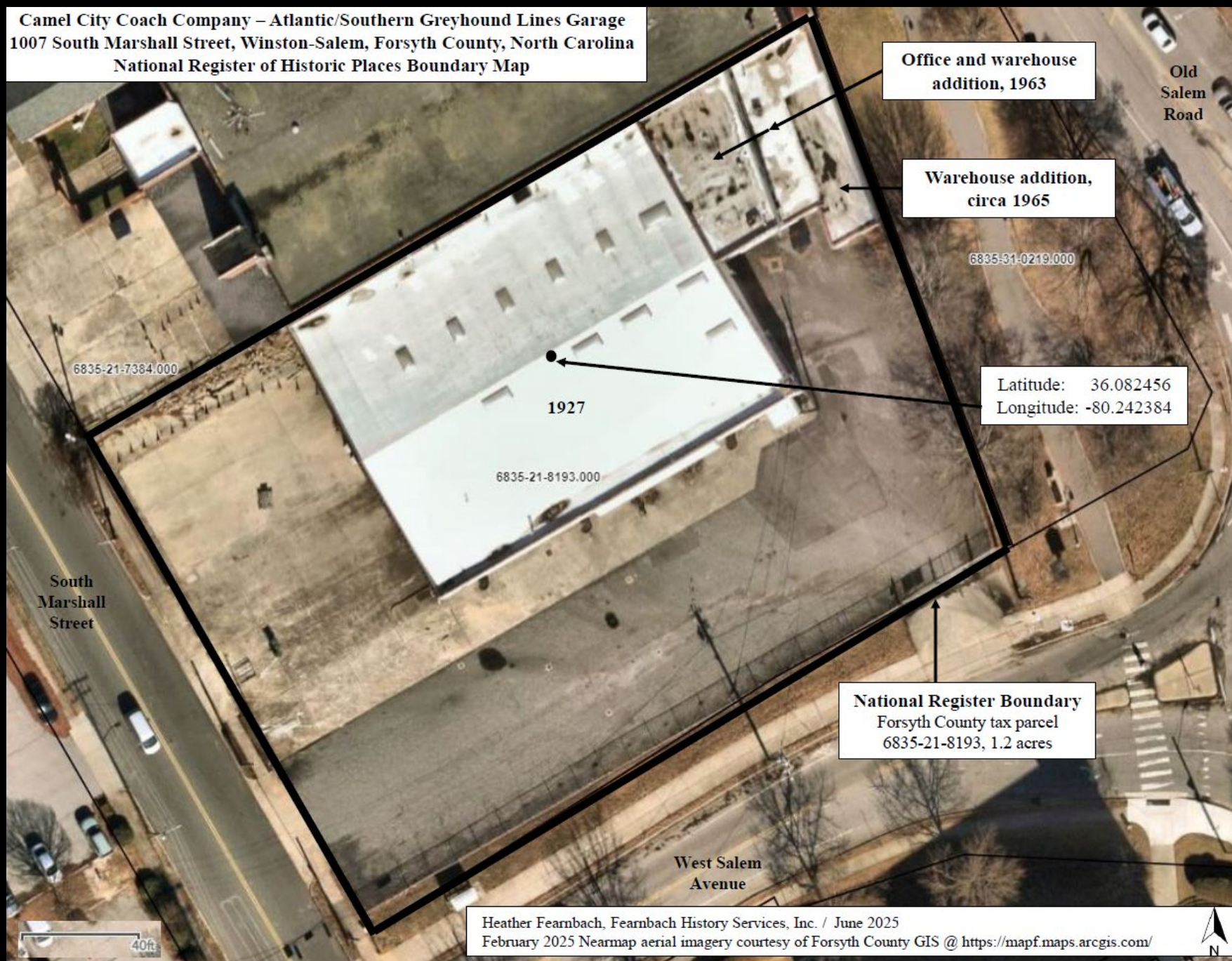
Camel City Coach Company –
Atlantic/Southern Greyhound Lines Garage
1007 South Marshall Street, Winston-Salem
Forsyth County, North Carolina
National Register of Historic Places
Location Map

Winston-Salem East Quadrangle, 2022





Camel City Coach Company – Atlantic/Southern Greyhound Lines Garage
1007 South Marshall Street, Winston-Salem, Forsyth County, North Carolina
National Register of Historic Places Boundary Map





West Elevation



Service Garge looking East



National Register Designation Requirements

National Register designation requirement – Significance

The Camel City Coach Company – Atlantic/Southern Greyhound Lines Garage is eligible for the National Register of Historic Places listing because of its association with events that have made a significant contribution to the broad patterns of American history—specifically our local transportation history—due to its integral role in the operation of Winston-Salem’s largest intercity bus companies. Camel City Coach Company, established in December 1925 by entrepreneur John Lash Gilmer and a consortium of local investors, commenced service on January 19, 1926, with 20 employees, six 17-passenger vehicles, and two routes. The business maintained buses at its garage on South Liberty Street until rapid growth necessitated a larger building with ample parking. Camel City Coach Company thus engaged the Winston-Salem architecture firm Northup and O’Brien to design the one-story, brick garage erected on South Marshall Street by Frank L. Blum Construction Company in 1927. Camel City Coach Company and Charleston, West-Virginia-based Blue and Gray Transit Company merged in December 1929 to create National Highway Transport Company, which was reorganized as Atlantic Greyhound Lines in early 1930. Camel City Coach Company retained its name until March 1932, when it incorporated as Atlantic Greyhound Lines of North Carolina. Greyhound Corporation became the company’s majority stockholder in 1936. Its Atlantic and Southeastern divisions merged as Southern Greyhound Lines in December 1960. Although the company undertook a comprehensive renovation and expansion of the South Marshall Street garage in 1963, the facility was closed on May 15, 1968, and mechanics reassigned to Charleston, West Virginia, and Columbia, South Carolina.

The building’s period of significance begins in 1927 and continues until 1968, when it ceased to function in its original capacity. The Camel City Coach Company – Atlantic/Southern Greyhound Garage is Winston-Salem’s only surviving early-twentieth-century bus maintenance and repair garage associated with the operation of intercity bus companies.



National Register Designation Requirements

National Register designation requirement – Integrity

Camel City Coach Company – Atlantic-Southern Greyhound Lines Garage possess the seven qualities of historic integrity - location, setting, feeling, association, design, materials, and workmanship, a requirement for listing in the National Register.



HRC Recommendation

Following presentation of the nomination and a public hearing on January 7, 2026, the Historic Resources Commission unanimously found that the property meets the criteria for listing in the National Register of Historic Places and recommended that it be submitted for listing in the Register.