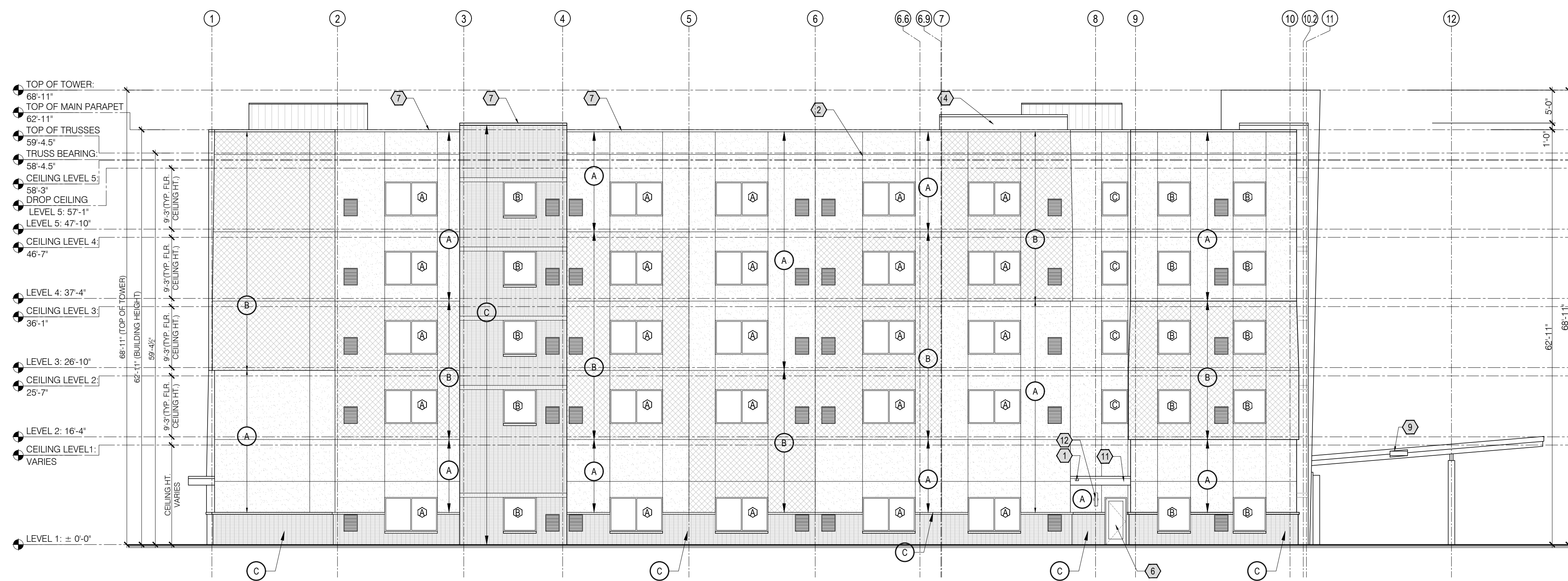


01 FRONT ELEVATION - SOUTHWEST
A-201 SCALE: 3/32" = 1'-0"



02 LEFT ELEVATION - NORTHWEST
A-201 SCALE: 3/32" = 1'-0"

KEY NOTES

- 1 EMERGENCY OVERFLOW ROOF SCUPPER
- 2 CONTROL JOINT - LOCATE PER MFR'S RECOMMENDATIONS
- 3 COORDINATE ELECTRICAL REQUIREMENTS FOR SIGNAGE
- 4 ELEVATOR OVERRUN
- 5 PRE-FINISHED ALUMINUM WINDOWS
- 6 ALUMINUM STOREFRONT
- 7 PARAPET
- 8 AUTOMATIC SLIDING DOORS
- 9 PORTE COCHERE CLEARANCE SIGN
- 10 INSULATED HOLLOW METAL DOOR AND FRAME
- 11 COVERED SECONDARY ENTRY
- 12 EXTERIOR WALL SCONCE
- 13 ALUMINUM WINDOW

BUILDING SIGNAGE

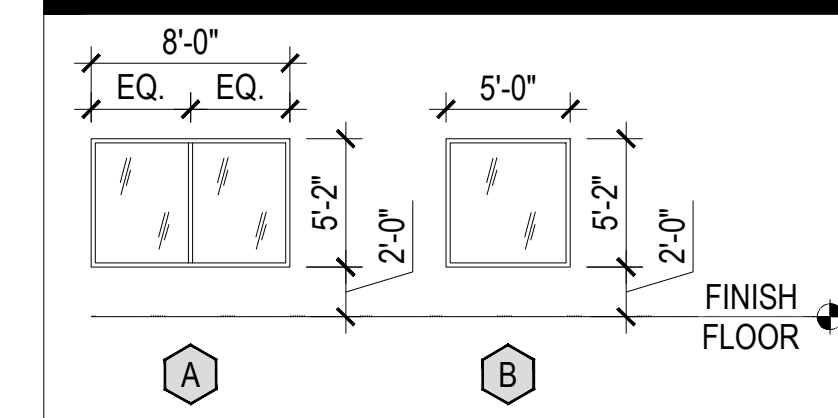
1. ALL SIGNAGE INDICATED FOR ILLUSTRATIVE PURPOSES ONLY. LOCATION, SIZE, ETC. TO BE DETERMINED ON AN INDIVIDUAL PROJECT BASIS.
2. MINIMUM 3/4" PLYWOOD BACKERBOARD REQUIRED AT SIGN LOCATIONS. AREA SHOULD COVER ENTIRE LENGTH AND HEIGHT OF FASCIA OR SPACE AVAILABLE FOR SIGN.
3. ELECTRICAL AND FINAL CONNECTION BY CONTRACTOR. ELECTRICAL REQUIREMENTS MAY BE OBTAINED FROM SIGN COMPANY. TYPICAL 120V REQUIREMENT.
4. RACEWAYS / WIREWAYS ARE NOT ALLOWED
5. PERMANENT ACCESS DOORS TO INTERIOR OF ALL PARAPETS WHERE SIGNS ARE LOCATED TO BE PROVIDED BY CONTRACTOR. CONTRACTOR TO FURNISH AND CONNECT PRIMARY ELECTRICAL SERVICE INSIDE PARAPET WALL.
6. GUESTROOMS OR PUBLIC SPACES WITH SIGNAGE ON EXTERIOR WALLS MUST HAVE ELECTRICAL PENETRATIONS AND/OR REMOTE TRANSFORMERS COORDINATED AND/OR INSTALLED PRIOR TO CLOSING UP THE WALL. PENETRATION LAYOUT MAY BE OBTAINED FROM SIGN COMPANY.

EXTERIOR MATERIAL LEGEND

- MATERIAL 'A': EIFS FINISH OVER EPS FOAM - PAREX, STO OR DRYVIT COLOR: SHERWIN WILLIAMS: SW 7564 POLAR BEAR
- MATERIAL 'B': EIFS FINISH OVER EPS FOAM - PAREX, STO OR DRYVIT COLOR: SHERWIN WILLIAMS: SW 7016 - MINDFUL GRAY
- MATERIAL 'C': RUNNING BOND BRICK VENEER, US BRICK, COMMERCIAL COLLECTION - ARCHITECTURAL SERIES - COLONIAL GRAY VELOUR
- MATERIAL 'D': EIFS FINISH OVER EPS FOAM - PAREX, STO OR DRYVIT COLOR: SHERWIN WILLIAMS: SW 7649 - SILVER PLATE
- MATERIAL 'E': EIFS FINISH OVER EPS FOAM - PAREX, STO OR DRYVIT COURSE SAND TEXTURE COLOR: SHERWIN WILLIAMS: SW 6076 - TURKISH COFFEE
- MATERIAL 'F': PAINT ON METAL SURFACES, TRIMS, WINDOW FRAMES, METAL COPING COLOR: SHERWIN WILLIAMS: SW 7088 - GRIZZLE GRAY

REFERENCE HOMEWOOD STANDARDS & EXTERIOR DESIGN GUIDELINES FOR APPROVED MATERIAL OPTIONS

WINDOW SCHEDULE



GENERAL NOTES

1. REVIEW ALL SIGHTLINES AROUND PROPERTY BEFORE LOCATING ROOFTOP EQUIPMENT. VERIFY ALL EQUIPMENT IS ADEQUATELY SCREENED.
2. ALL EXTERIOR VENTS, GRILLES, MECHANICAL LOUVERS AND EXTERIOR HOLLOW METAL DOORS TO BE FINISHED TO MATCH ADJACENT EXTERIOR MATERIAL.

HOMEWOOD SUITES by Hilton™

DESIGN CONSULTANTS

DESIGN SOLUTIONS
info@omdesignsolutions.com
Phone: 404-740-7589
2885 LAWRENCEVILLE SUWANEE ROAD
SUITE C, SUWANEE, GEORGIA
TEL.: 678-780-7589
info@omdesignsolutions.com

STRUCTURAL

S^e STABILITY ENGINEERING
1376 Church St., Ste 200, Decatur, GA 30030 P: 404-377-6310

MEP

GRIFFITH ENGINEERING
— ATLANTA - CHARLOTTE —
4168 Chamblee Dunwoody Road, Suite 210
Atlanta, GA, 30341
P (770) 451-6757, F (770) 451-6761

OWNER

BPR PROPERTIES
2485 PENNY ROAD,
SUITE 140,
HIGH POINT NC 27265

THIS DOCUMENT, ARRANGEMENTS, ANNOTATIONS AND GRAPHICAL PRESENTATIONS OF THE DOCUMENT ARE THE PROPERTY OF THE DESIGN CONSULTANT. DESIGN CONSULTANT WHO RETAINS OWNERSHIP AND AUTHORITY OF THIS DOCUMENT IN ITS ENTIRETY.
THIS DOCUMENT IS AN INSTRUMENT OF SERVICE AND IS THE INTELLECTUAL AND PHYSICAL PROPERTY OF THE DESIGN CONSULTANT.
AUTHORIZED USE OF THIS DOCUMENT IS GRANTED SOLELY FOR THE PURPOSE OF THIS SPECIFIC PROJECT AND LOCATION.

REVISION #	DATE	REMARKS

DATE	ISSUED TO	ISSUED FOR
06-14-2021	OWNER	PRELIMINARY PLANS
06-27-2021	HILTON	FOR REVIEW
11-19-2021	OWNER	UPDATED SET

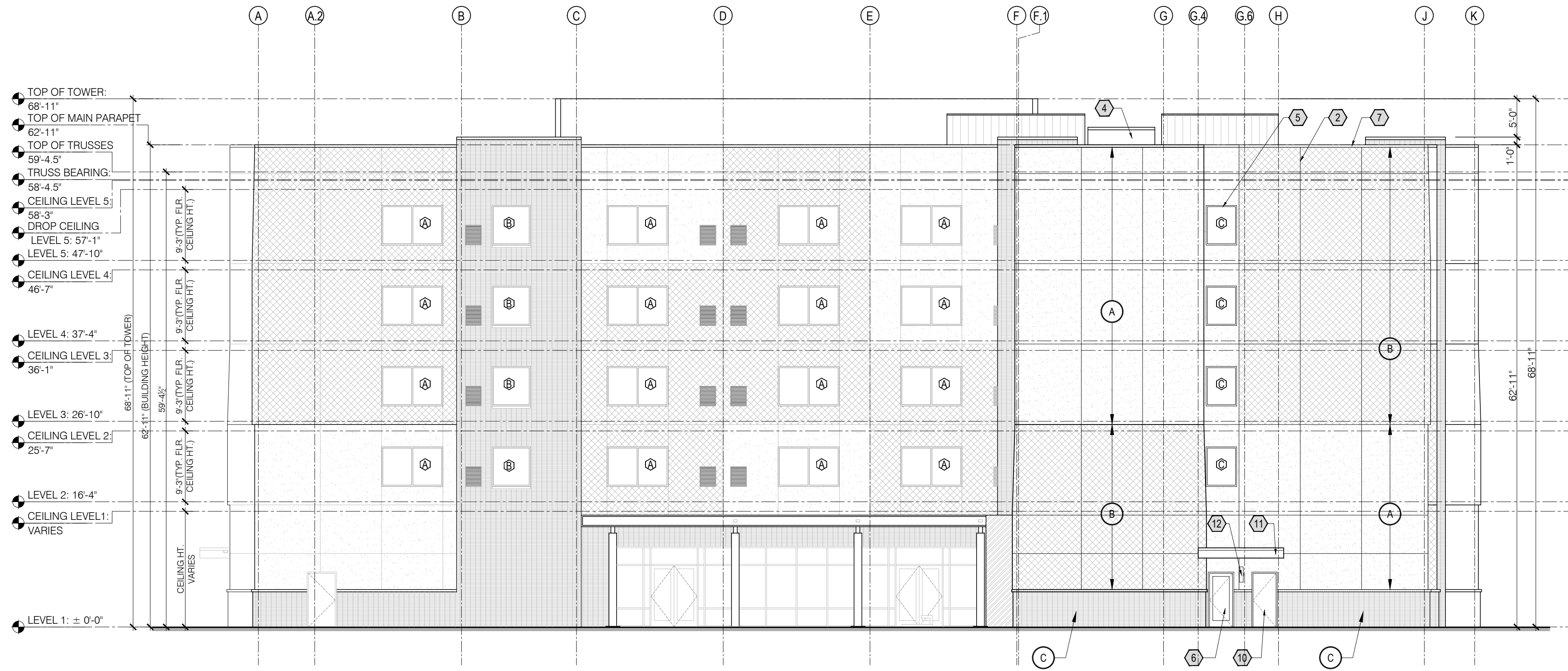
PROJECT ADDRESS:
HOMEWOOD SUITES BY HILTON
3934 OXFORD STATION
WINSTON SALEM, NC.

LAYOUT:
BUILDING ELEVATIONS

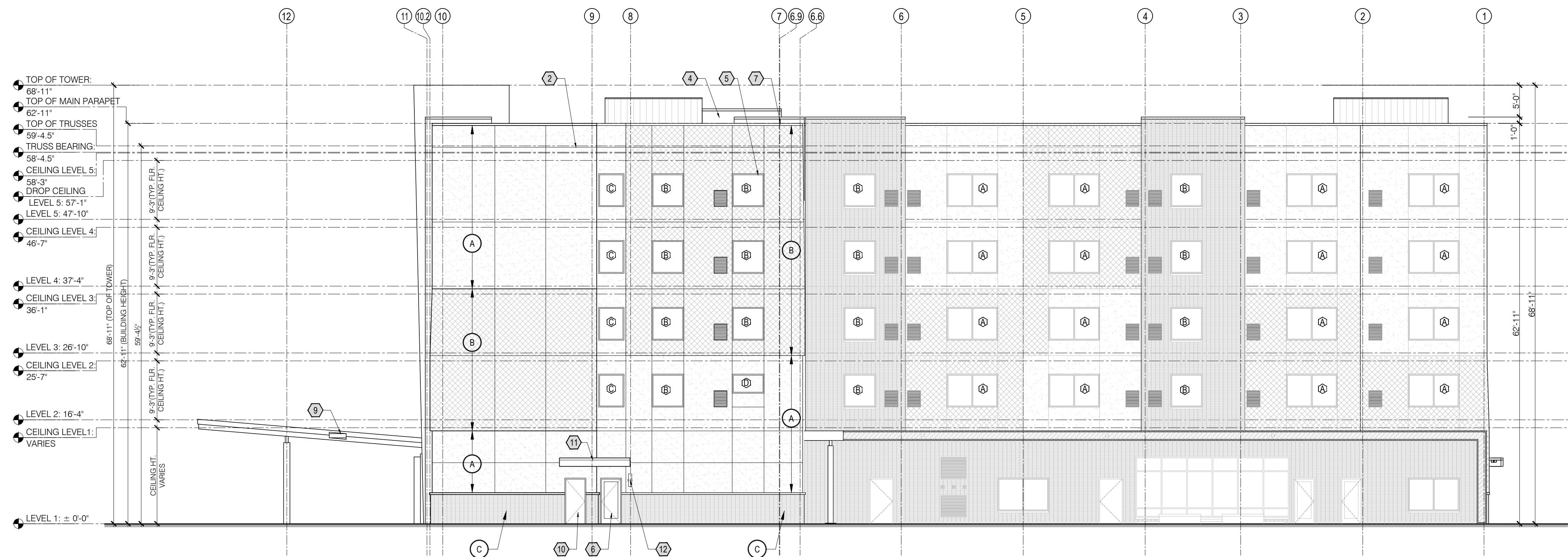
PAPER SIZE: 24X36 (ARCH D)
SCALE: AS NOTED

SHEET NUMBER:

A-201



01 REAR ELEVATION - NORTHEAST
 A-202 SCALE: 3/32" = 1'-0"



02 RIGHT ELEVATION - SOUTHWEST
 A-202 SCALE: 3/32" = 1'-0"

KEY NOTES

- 1 EMERGENCY OVERFLOW ROOF SCUPPER
- 2 CONTROL JOINT - LOCATE PER MFR'S RECOMMENDATIONS
- 3 COORDINATE ELECTRICAL REQUIREMENTS FOR SIGNAGE
- 4 ELEVATOR OVERRUN
- 5 PRE-FINISHED ALUMINUM WINDOWS
- 6 ALUMINUM STOREFRONT
- 7 PARAPET
- 8 AUTOMATIC SLIDING DOORS
- 9 PORTE COCHERE CLEARANCE SIGN
- 10 INSULATED HOLLOW METAL DOOR AND FRAME
- 11 COVERED SECONDARY ENTRY
- 12 EXTERIOR WALL SCOSCE
- 13 ALUMINUM WINDOW

BUILDING SIGNAGE

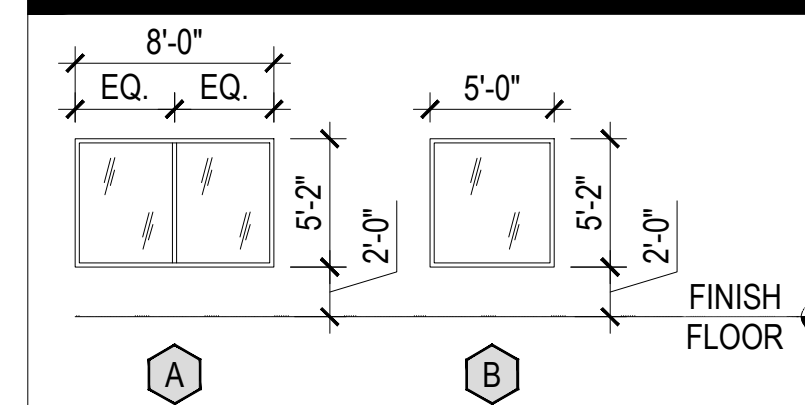
1. ALL SIGNAGE INDICATED FOR ILLUSTRATIVE PURPOSES ONLY. LOCATION, SIZE, ETC. TO BE DETERMINED ON AN INDIVIDUAL PROJECT BASIS.
2. MINIMUM 3/4" PLYWOOD BACKERBOARD REQUIRED AT SIGN LOCATIONS. AREA SHOULD COVER ENTIRE LENGTH AND HEIGHT OF FASCIA OR SPACE AVAILABLE FOR SIGN.
3. ELECTRICAL AND FINAL CONNECTION BY CONTRACTOR. ELECTRICAL REQUIREMENTS MAY BE OBTAINED FROM SIGN COMPANY. TYPICAL 120V REQUIREMENT.
4. RACEWAYS / WIREWAYS ARE NOT ALLOWED
5. PERMANENT ACCESS DOORS TO INTERIOR OF ALL PARAPETS WHERE SIGNS ARE LOCATED TO BE PROVIDED BY CONTRACTOR. CONTRACTOR TO FURNISH AND CONNECT PRIMARY ELECTRICAL SERVICE INSIDE PARAPET WALL.
6. GUESTROOMS OR PUBLIC SPACES WITH SIGNAGE ON EXTERIOR WALLS MUST HAVE ELECTRICAL PENETRATIONS AND/OR REMOTE TRANSFORMERS COORDINATED AND/OR INSTALLED PRIOR TO CLOSING UP THE WALL. PENETRATION LAYOUT MAY BE OBTAINED FROM SIGN COMPANY.

EXTERIOR MATERIAL LEGEND

- MATERIAL 'A': EIFS FINISH OVER EPS FOAM - PAREX, STO OR DRYVIT COLOR: SHERWIN WILLIAMS: SW 7564 POLAR BEAR
- MATERIAL 'B': EIFS FINISH OVER EPS FOAM - PAREX, STO OR DRYVIT COLOR: SHERWIN WILLIAMS: SW 7016 - MINDFUL GRAY
- MATERIAL 'C': RUNNING BOND BRICK VENEER, US BRICK, COMMERCIAL COLLECTION - ARCHITECTURAL SERIES - COLONIAL GRAY VELOUR
- MATERIAL 'D': EIFS FINISH OVER EPS FOAM - PAREX, STO OR DRYVIT COLOR: SHERWIN WILLIAMS: SW 7649 - SILVER PLATE
- MATERIAL 'E': EIFS FINISH OVER EPS FOAM - PAREX, STO OR DRYVIT COURSE SAND TEXTURE COLOR: SHERWIN WILLIAMS: SW 6076 - TURKISH COFFEE
- MATERIAL 'F': PAINT ON METAL SURFACES, TRIMS, WINDOW FRAMES, METAL COPING COLOR: SHERWIN WILLIAMS: SW 7088 - GRIZZLE GRAY

REFERENCE HOMEWOOD STANDARDS & EXTERIOR DESIGN GUIDELINES FOR APPROVED MATERIAL OPTIONS

WINDOW SCHEDULE



GENERAL NOTES

1. REVIEW ALL SIGHTLINES AROUND PROPERTY BEFORE LOCATING ROOFTOP EQUIPMENT. VERIFY ALL EQUIPMENT IS ADEQUATELY SCREENED.
2. ALL EXTERIOR VENTS, GRILLES, MECHANICAL LOUVERS AND EXTERIOR HOLLOW METAL DOORS TO BE FINISHED TO MATCH ADJACENT EXTERIOR MATERIAL.

HOMEWOOD SUITES by Hilton

DESIGN CONSULTANTS

STRUCTURAL

MEP

OWNER

BPR PROPERTIES
 2485 PENNY ROAD,
 SUITE 140,
 HIGH POINT NC 27265

THIS DOCUMENT, ARRANGEMENTS, ANNOTATIONS AND GRAPHICAL PRESENTATIONS OR THE DOCUMENTS ARE THE PROPERTY OF THE DESIGN SOLUTIONS. DESIGN CONSULTANTS WHO RETAIN OWNERSHIP AND AUTHORSHIP OF THIS DOCUMENT IN ITS ENTIRETY.
 THIS DOCUMENT IS AN INSTRUMENT OF SERVICE AND IS THE INTELLECTUAL AND PHYSICAL PROPERTY OF THE DESIGN SOLUTIONS.
 UNAUTHORIZED USE OF THIS DOCUMENT IS STRICTLY PROHIBITED FOR THE PURPOSE OF THIS SPECIFIC PROJECT AND LOCATION.

REVISION #	DATE	REMARKS

DATE	ISSUED TO	ISSUED FOR
06-14-2021	OWNER	PRELIMINARY PLANS
06-23-2021	HILTON	FOR REVIEW
11-19-2021	OWNER	UPDATED SET

PROJECT ADDRESS:
HOMEWOOD SUITES BY HILTON
 3934 OXFORD STATION
 WINSTON SALEM, NC.

LAYOUT:
BUILDING ELEVATIONS

PAPER SIZE: 24X36 (ARCH D)

SCALE: AS NOTED

SHEET NUMBER:

A-202