

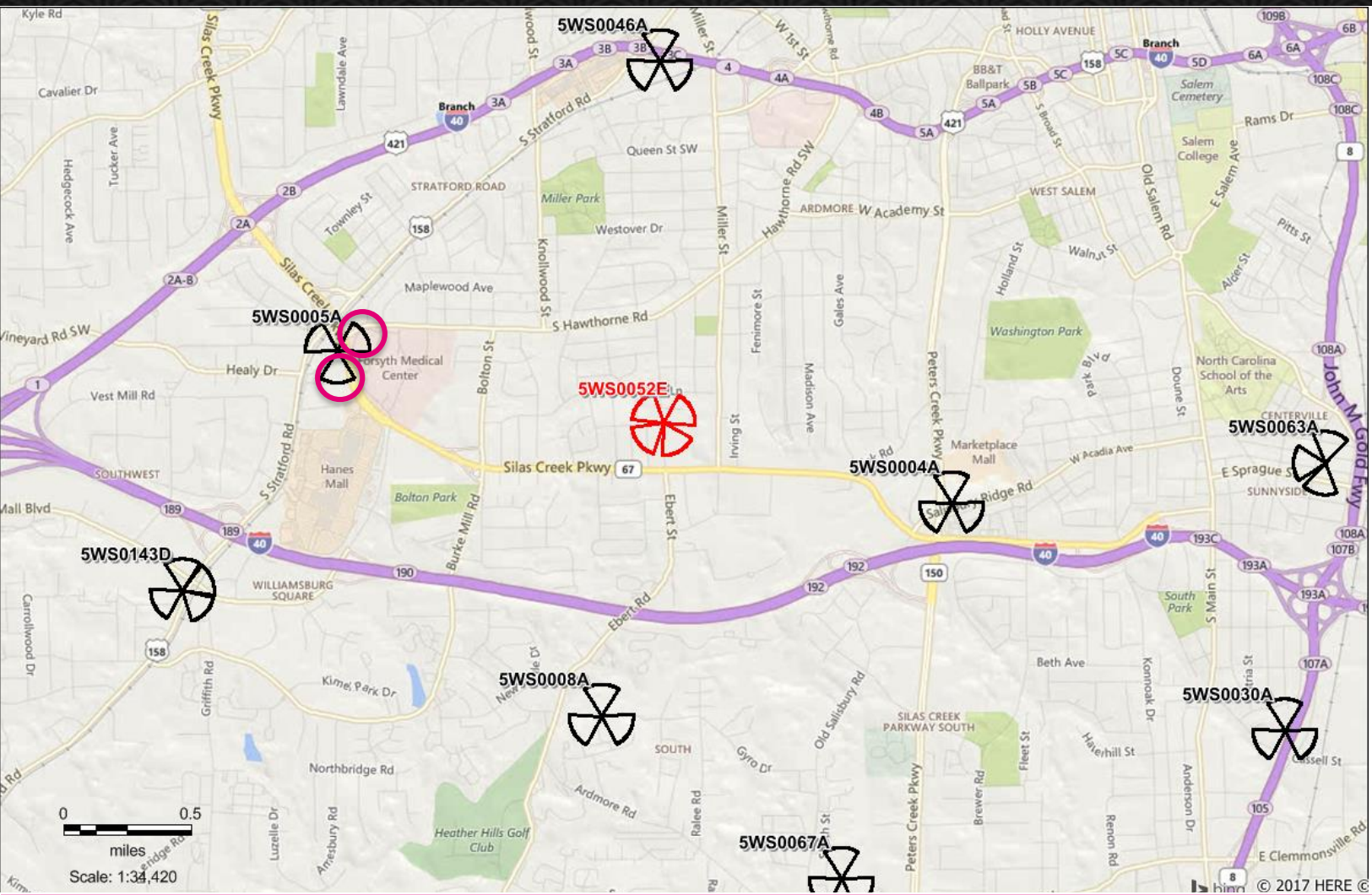


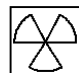
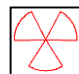

Coverage Analysis– 5WS0052E Cell Split

Oct-13- 2017



5WS0052E– Overview



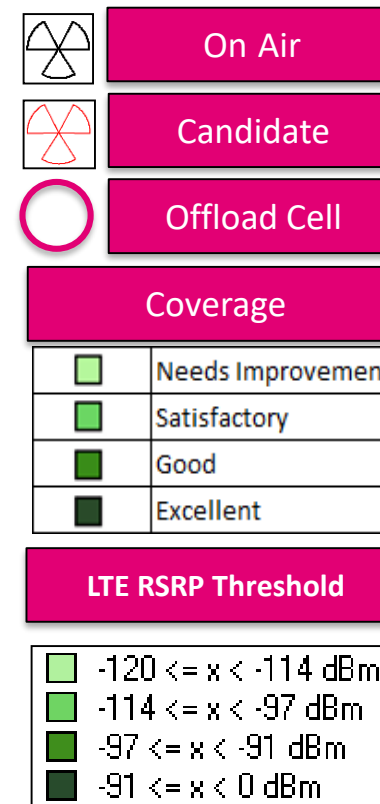
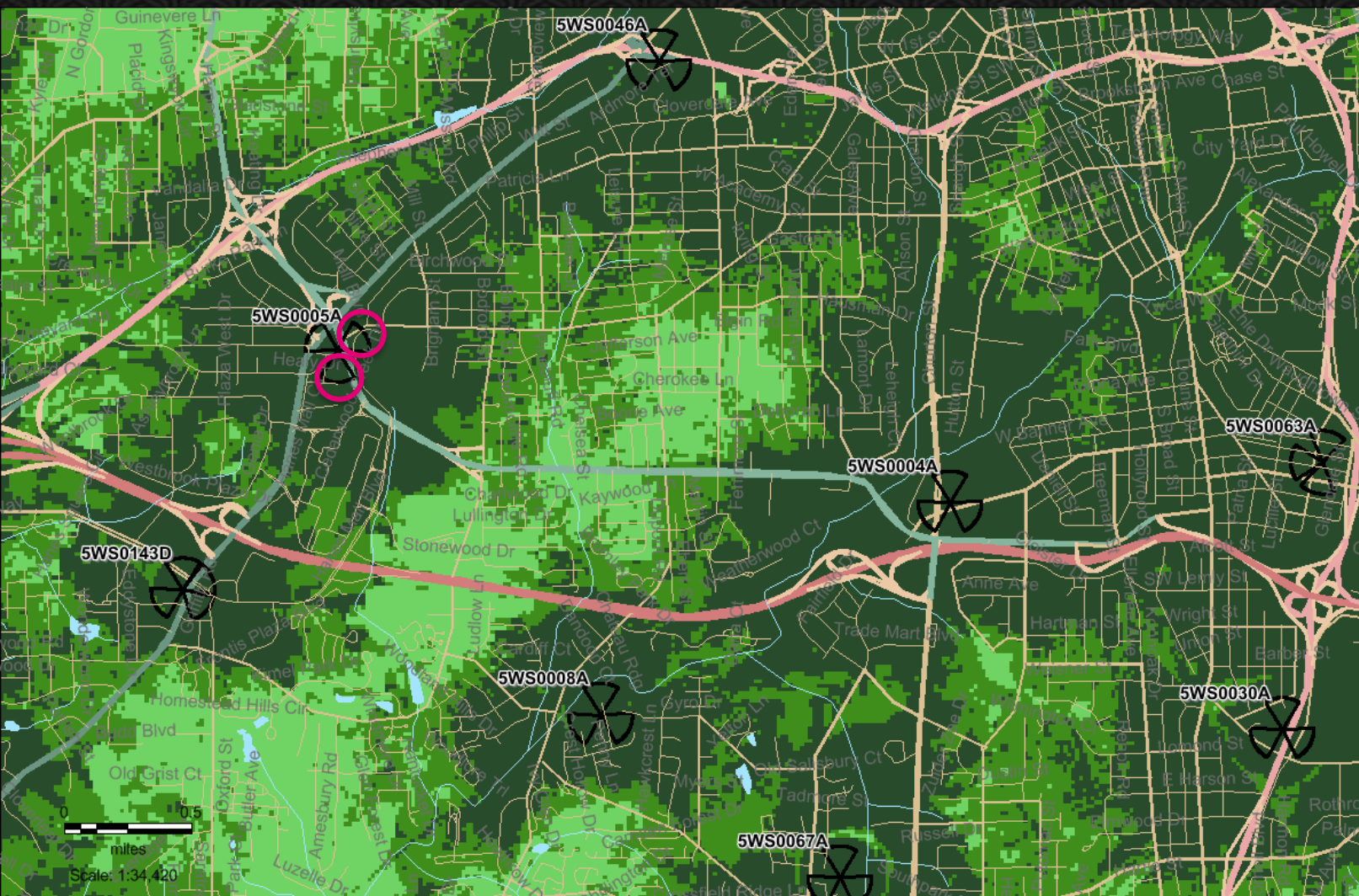
-  On Air
-  Candidate
-  Offload Cell

Candidate	Lat	Long
5WS0052E	36.0726450	-80.2775340

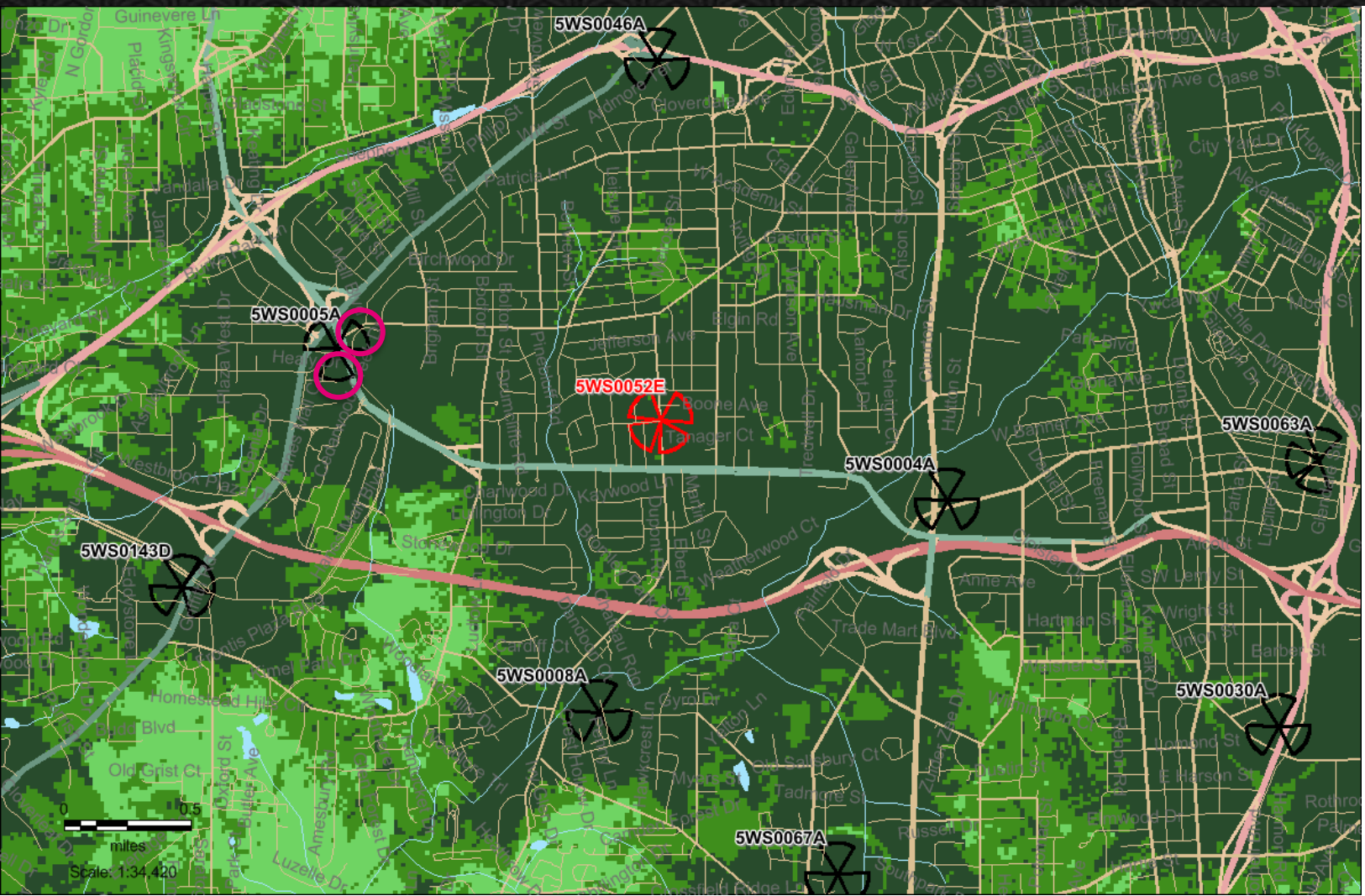
Coverage Objective

The primary objective of this site is to offload the congested sectors 5WS0005A1 and 5WS0005A2 as well as improve the coverage in the surrounding area.

5WS0052E– Coverage-Before Candidate



5WS0052E – Coverage-After Candidate



	On Air
	Candidate
Coverage	
	Needs Improvement
	Satisfactory
	Good
	Excellent
LTE RSRP Threshold	
	-120 <= x < -114 dBm
	-114 <= x < -97 dBm
	-97 <= x < -91 dBm
	-91 <= x < 0 dBm
Height	
Antenna Centerline 108 Feet	
Azimuth	
60-150-230-310	

5WS0052E will be an Excellent addition to the T-Mobile Network. It will help to improve coverage on US 40, Silas Creek Pkwy, Herlong Ave and S Hawthorne Rd. All cell sites have a maximum number of phone/data calls it can take at any given time and the new site 5WS0052E will help offload these calls from nearby sites and especially reduce the congestion at 5WS0005A1 and 5WS0005A2.