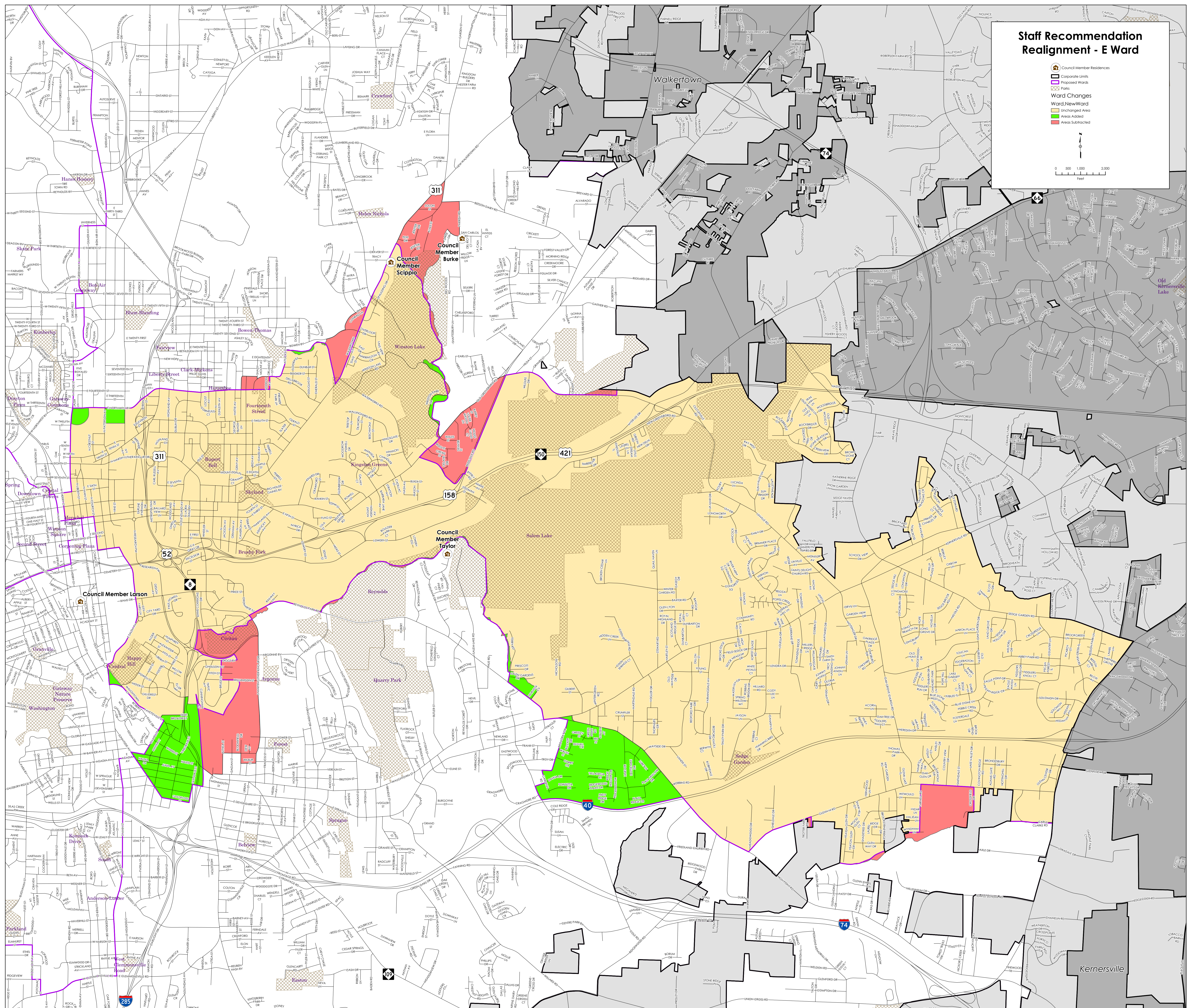
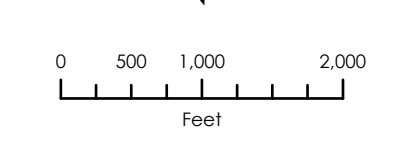


### Staff Recommendation Realignment - E Ward

- Council Member Residences
- Corporate Limits
- Proposed Wards
- City Limits
- Ward New/Ward
- Unchanging Area
- Areas Added
- Areas Subtracted



### Population Summary Report

	TOTAL Population	Target Population	Target Deviation	Target Deviation (%)	Non-Hispanic White	Hispanic	Non-Hispanic Black	Non-Hispanic Asian	Non-Hispanic Hawaiian or Other Pacific Islander	Non-Hispanic Some Other Race	Non-Hispanic Two or More Races
East Ward	31,361	31,193	168	0.54	10,846	4,752	14,449	540	17	206	224
North Ward	31,002	31,193	-191	-0.61	8,305	6,799	14,416	500	129	288	320
Northeast Ward	31,370	31,193	177	0.57	6,296	6,602	17,437	243	32	178	320
Northwest Ward	31,177	31,193	-16	-0.05	21,506	2,268	5,153	1,453	29	297	153
South Ward	31,155	31,193	-38	-0.12	14,023	5,476	9,806	938	15	275	244
Southeast Ward	30,942	31,193	-251	-0.8	7,762	11,014	11,026	376	19	199	242
Southwest Ward	31,213	31,193	20	0.06	16,614	4,185	7,901	1,527	11	325	266
West Ward	31,325	31,193	132	0.42	24,362	1,745	2,647	1,822	13	300	121