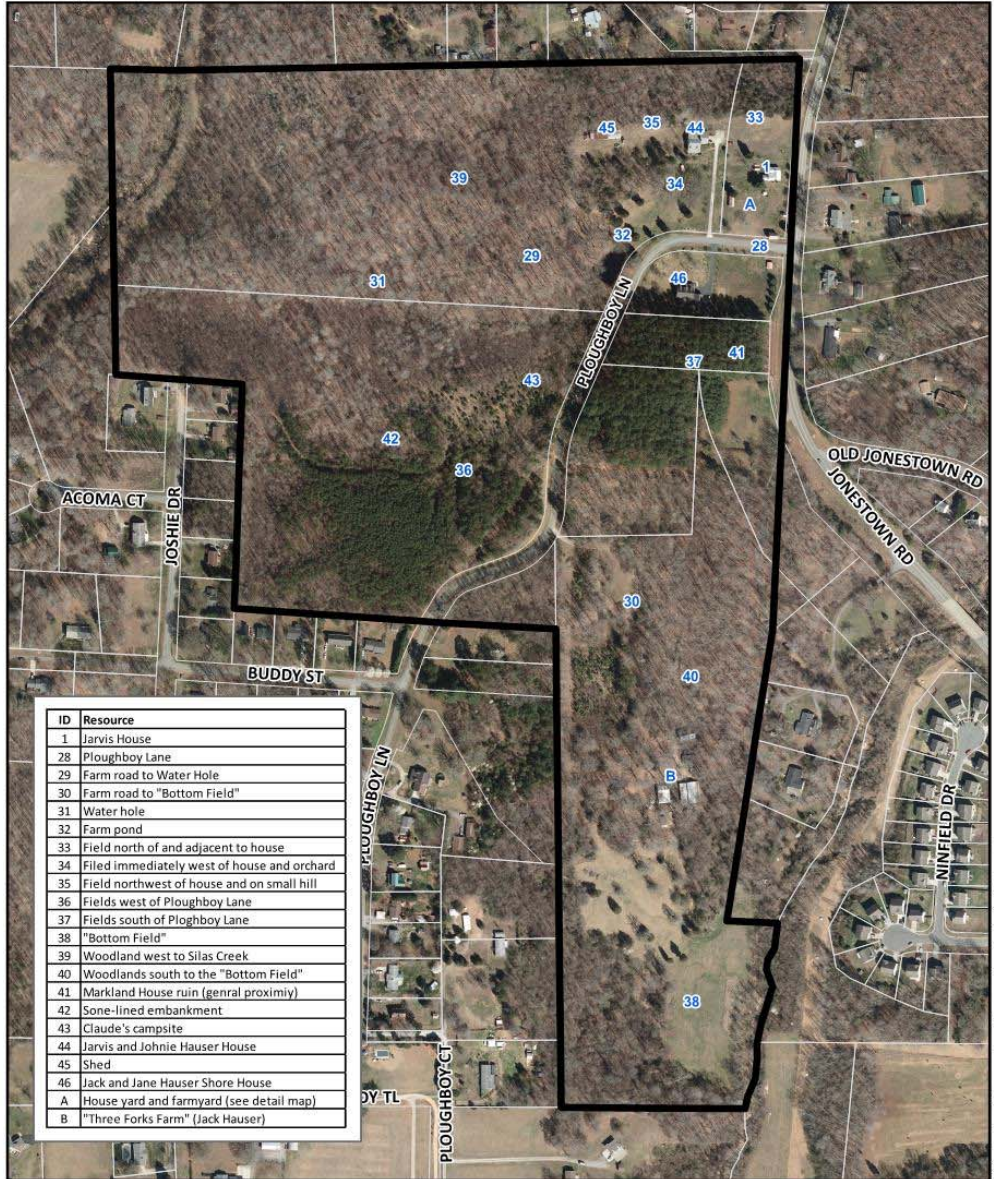


Evergreen Farm

National Register of Historic Places Nomination Review

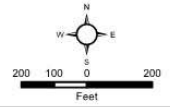


ID	Resource
1	Jarvis House
28	Ploughboy Lane
29	Farm road to Water Hole
30	Farm road to "Bottom Field"
31	Water hole
32	Farm pond
33	Field north of and adjacent to house
34	Filed immediately west of house and orchard
35	Field northwest of house and on small hill
36	Fields west of Ploughboy Lane
37	Fields south of Ploughboy Lane
38	"Bottom Field"
39	Woodland west to Silas Creek
40	Woodlands south to the "Bottom Field"
41	Markland House ruin (general proximity)
42	Stone-lined embankment
43	Claude's campsite
44	Jarvis and Johnie Hauser House
45	Shed
46	Jack and Jane Hauser Shore House
A	House yard and farmyard (see detail map)
B	"Three Forks Farm" (Jack Hauser)

**Evergreen Farm
National Register Nomination
Resource Map**

 Evergreen Farm Nomination

 Farm Resource
(Identified by Hartley & Hartley Consultants,
Evergreen Farm National Register
of Historic Places Registration Form, 2019)



Evergreen Farm, Farmhouse ca. 1896



Evergreen Farm, House Yard & Farm Yard



Evergreen Farm, Fields and Woodlands





1907

Coming down the Road

Historic Resources Commission Findings

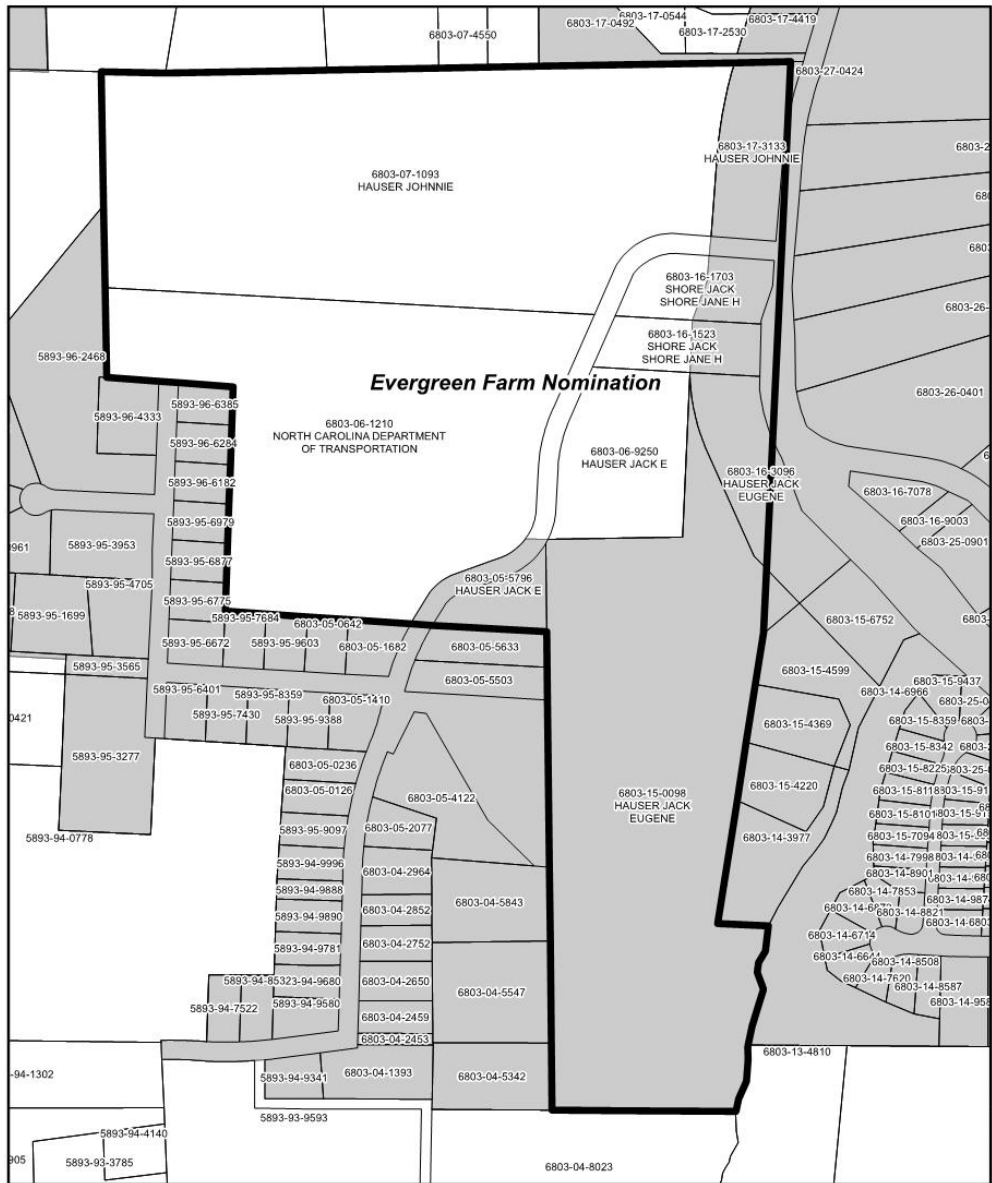
National Register designation requirement – Significance.

- On September 4, 2019, the Forsyth County Historic Resources Commission unanimously found that Evergreen Farm meets National Register Criteria A, B, and D. From the nomination, Evergreen Farm is an important example of the movement toward progressive and modernized agriculture in the late-nineteenth and twentieth centuries. Evergreen Farm was the location of a private experimental farm that was operated between 1894 and 1944 by James Monroe Jarvis. Jarvis was a leader in North Carolina’s development and use of new agricultural practices. This leadership included genetic experimentation and the development of a seed corn variety, Jarvis Golden Prolific, that received widespread acceptance and use. Evergreen Farm also has the potential, through archaeology, to yield information regarding his explicit management of the farm and development of Jarvis Golden Prolific.
- The period of significance is 1894-1947, the years of ownership by James Monroe “Ploughboy” Jarvis.

National Register designation requirement – Integrity

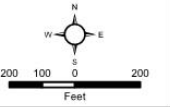
- Evergreen Farm maintains the integrity of location, design, setting, materials, workmanship, feeling, and association necessary for National Register listing.





**Evergreen Farm
National Register Nomination**

- Evergreen Farm Nomination
- Jurisdiction**
- Winston-Salem
- Unincorporated





Planning\Historical\NatReg\Disc\nominations\EvergreenFarm\EvergreenFarmNomination.mxd





Evergreen Farm (James Monroe “Ploughboy” Jarvis Farm)

1992-3 Proposed National Register Boundary – NCHPO concurrence 

2019 Proposed National Register Boundary – Nomination Pending 

Winston-Salem North Beltway Alignment (R-2247A) 