

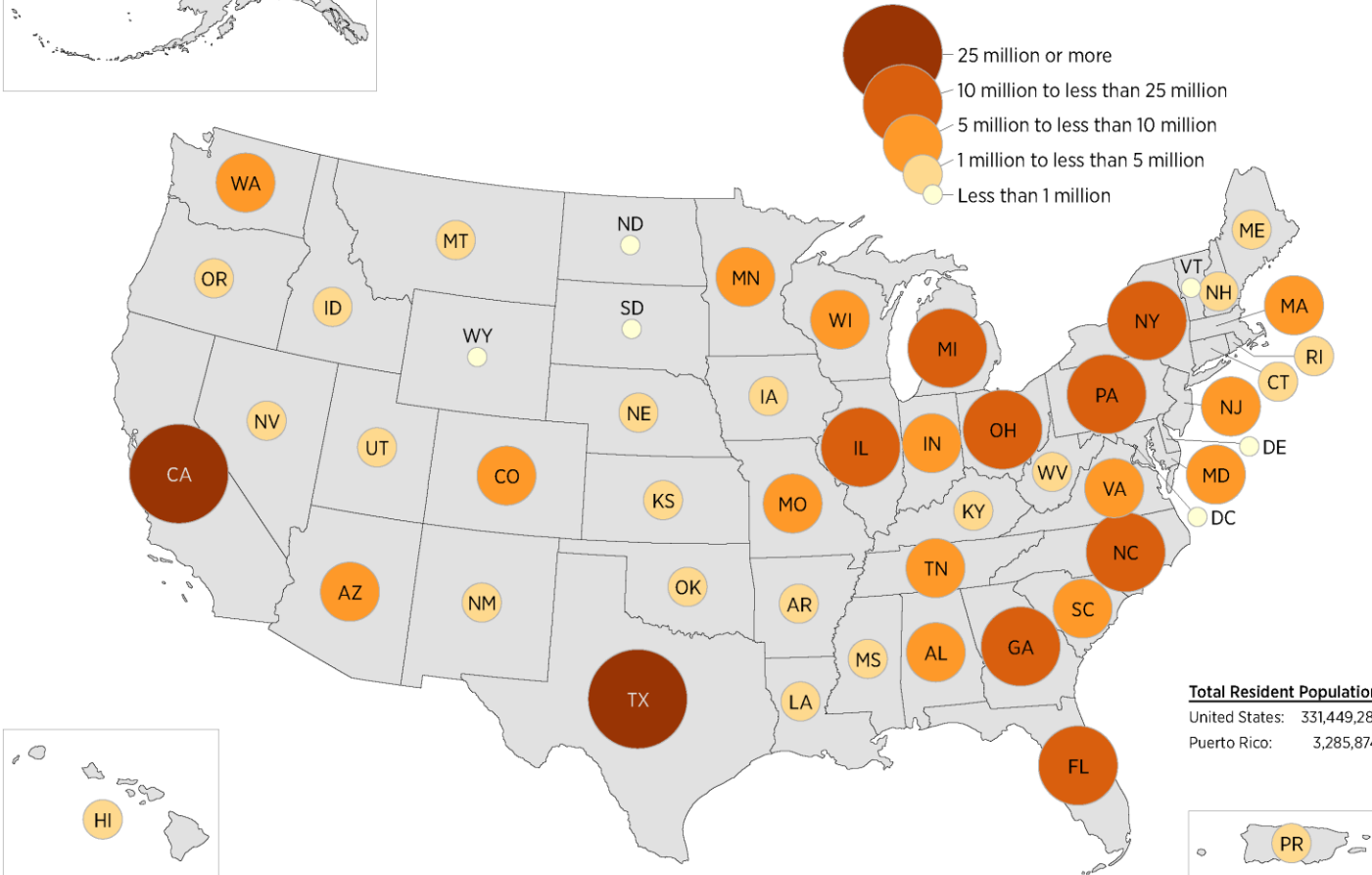
CENSUS 2020: INITIAL DATA REPORT

Community Development, Housing, and
General Government Committee

November 9, 2021



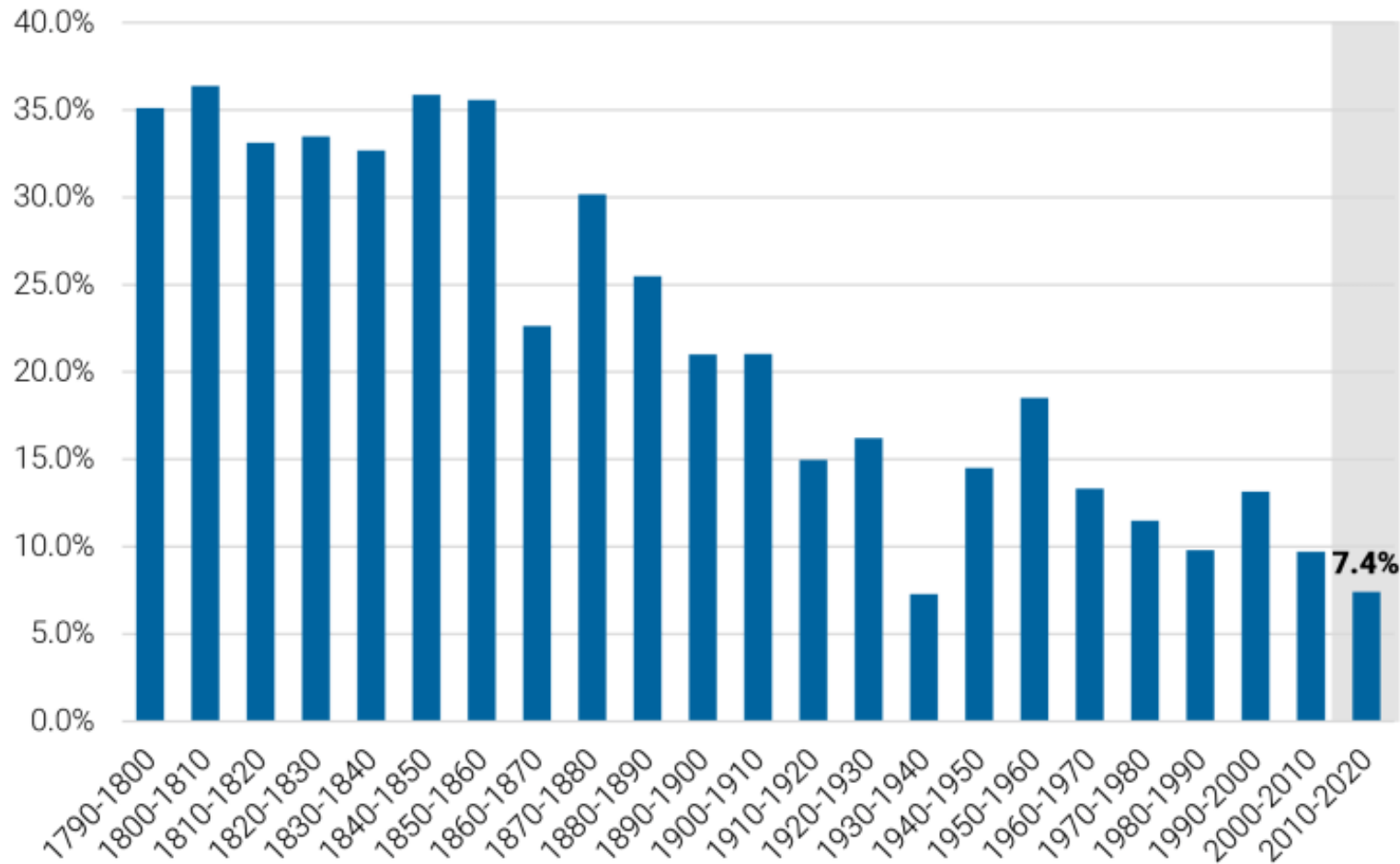
2020 Resident Population for the 50 States, the District of Columbia, and Puerto Rico



National Trends

- The total U.S. population is **331,449,281**.
- The total population increase was **22,703,743**.
- The states with the largest population are California, Texas, Florida, New York and Pennsylvania.
- The states with the smallest population are Wyoming, Vermont, Alaska, North Dakota and South Dakota.

Figure 1. US population growth for decades: censuses 1790 to 2020



Source: William H. Frey analysis of US decennial censuses 1790-2020.

National Trends

- The United States population grew **7.4%** between 2010-2020.
- This is the second lowest growth rate of any decade since the Census began in 1790.
- At 7.4%, the growth rate is only slightly higher than the lowest overall growth recorded at 7.3% between 1930 and 1940 which reflected the outcome of The Great Depression.
- Unlike the Great Depression, this is an ongoing trend likely due to the aging of the White population, decreased fertility rates and slowing immigration.

States with the Fastest and Slowest Growth in Resident Population: 2010 to 2020

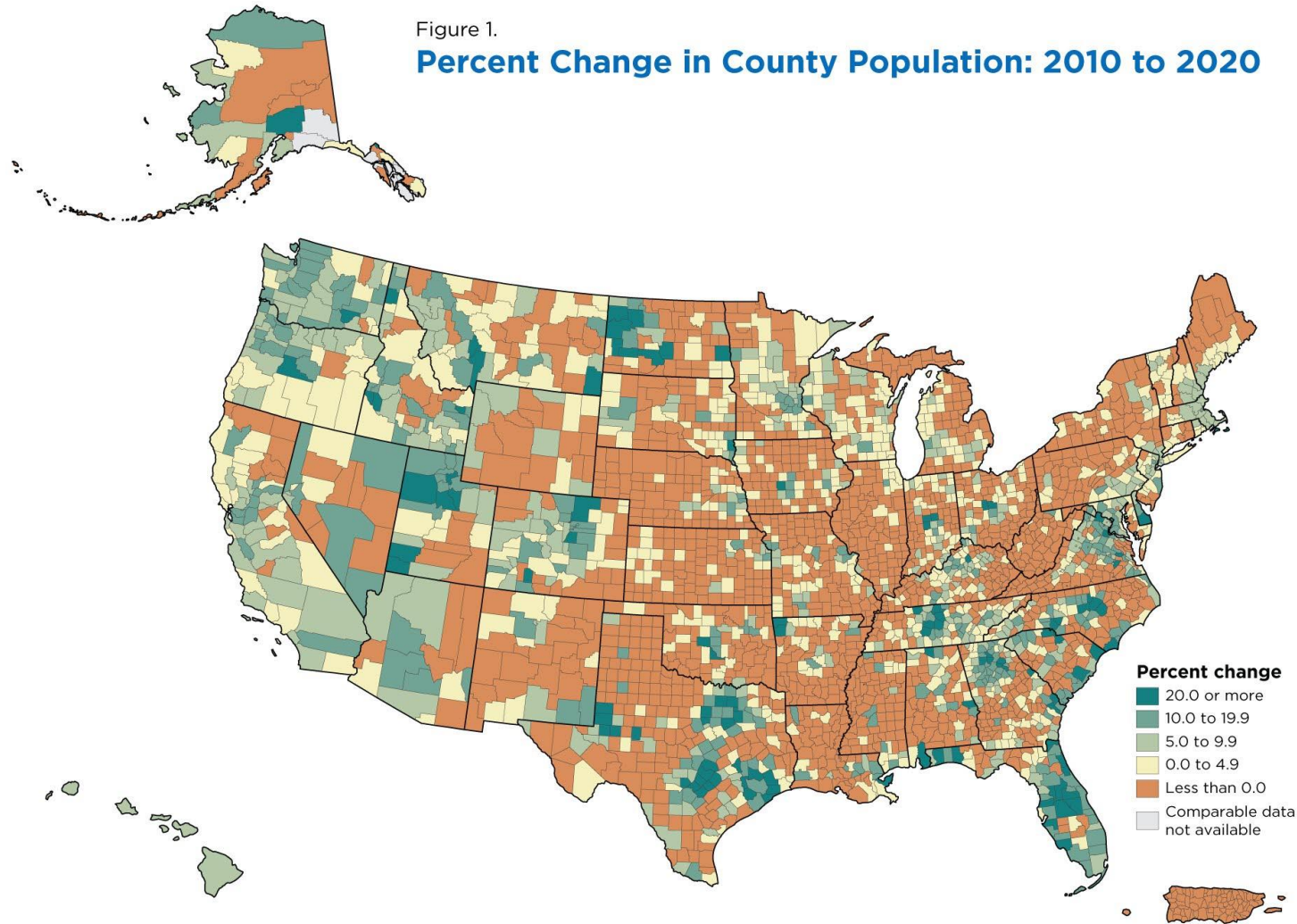
State	Population		Change	
	2010	2020	Number	Percent
Fastest Growing				
Utah	2,763,885	3,271,616	507,731	18.4
Idaho	1,567,582	1,839,106	271,524	17.3
Texas	25,145,561	29,145,505	3,999,944	15.9
North Dakota	672,591	779,094	106,503	15.8
Nevada	2,700,551	3,104,614	404,063	15.0
Slowest Growing				
Connecticut	3,574,097	3,605,944	31,847	0.9
Michigan	9,883,640	10,077,331	193,691	2.0
Ohio	11,536,504	11,799,448	262,944	2.3
Wyoming	563,626	576,851	13,225	2.3
Pennsylvania	12,702,379	13,002,700	300,321	2.4

Source: U.S. Census Bureau, 2020 Census and 2010 Census

National Trends

- The fastest growing states were Utah, Idaho, Texas, North Dakota and Nevada.
- The slowest growing states were Connecticut, Michigan, Ohio, Wyoming and Pennsylvania.
- Illinois, Mississippi and West Virginia lost population.

Figure 1.
Percent Change in County Population: 2010 to 2020



Note: Bedford city, VA, was changed to town status and added to Bedford County, VA, effective July 1, 2013. For purposes of presenting data, Bedford County is treated as if Bedford city were included in it at the time of the 2010 census.

Information on confidentiality protection, nonsampling error, and definitions is available at <https://www2.census.gov/programs-surveys/decennial/2020/technical-documentation/complete-tech-docs/summary-file/>.

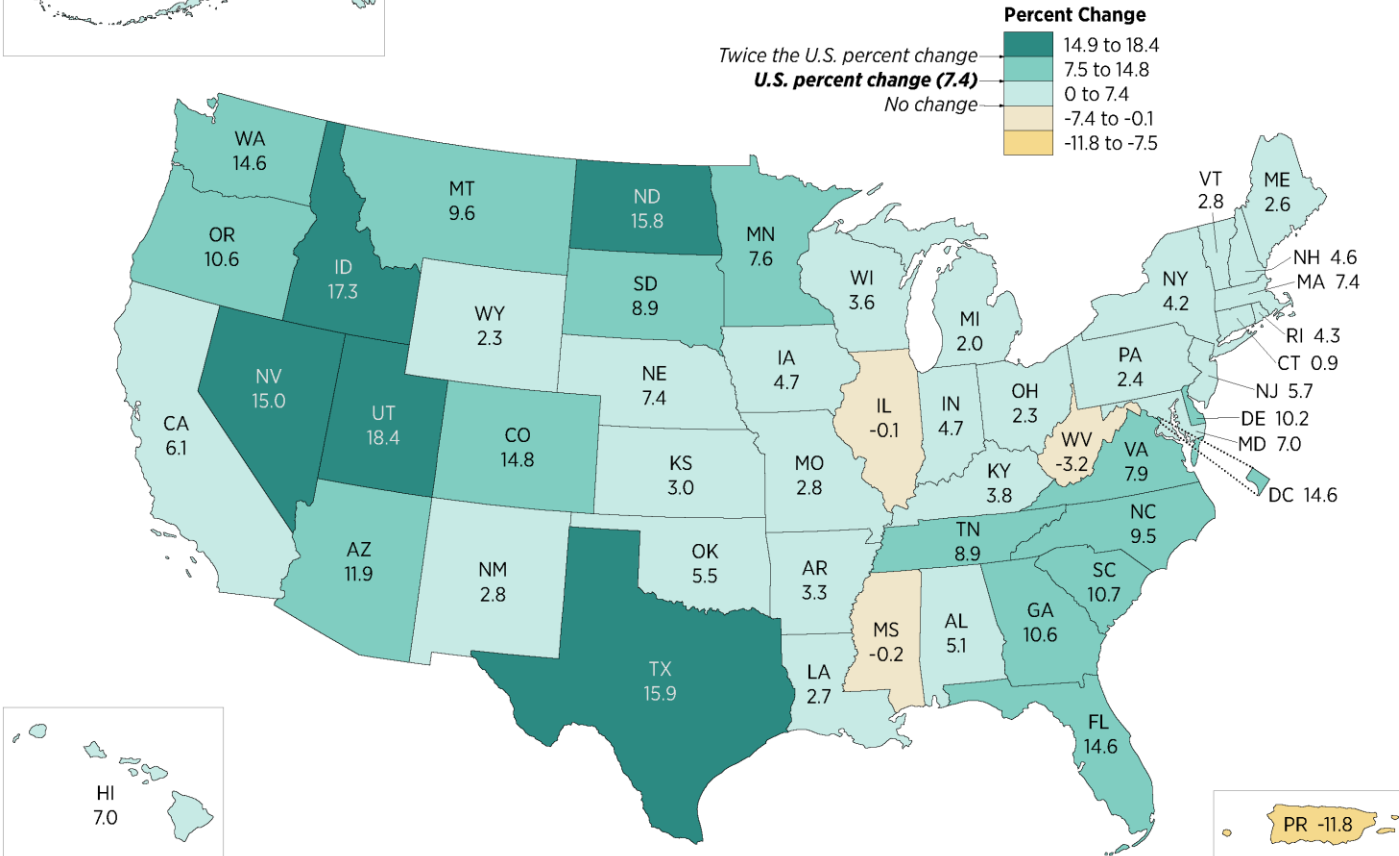
Source: U.S. Census Bureau, 2010 Census Redistricting Data (Public Law 94-171) Summary File; 2020 Census Redistricting Data (Public Law 94-171) Summary File.

National Trends

- 53% of U.S. counties lost population between 2010 and 2020.
- Urban areas tended to gain population, while rural areas continue to lose population.
- The five counties with the highest growth: Harris County, Texas (Houston-The Woodlands-Sugar Land); Maricopa County, Arizona (Phoenix-Mesa-Chandler); King County, Washington (Seattle-Tacoma-Bellevue); Clark County, Nevada (Las Vegas-Henderson-Paradise); and Tarrant County, Texas (Dallas-Fort Worth-Arlington).
- Los Angeles County is still the largest in the country with over 10 million residents.



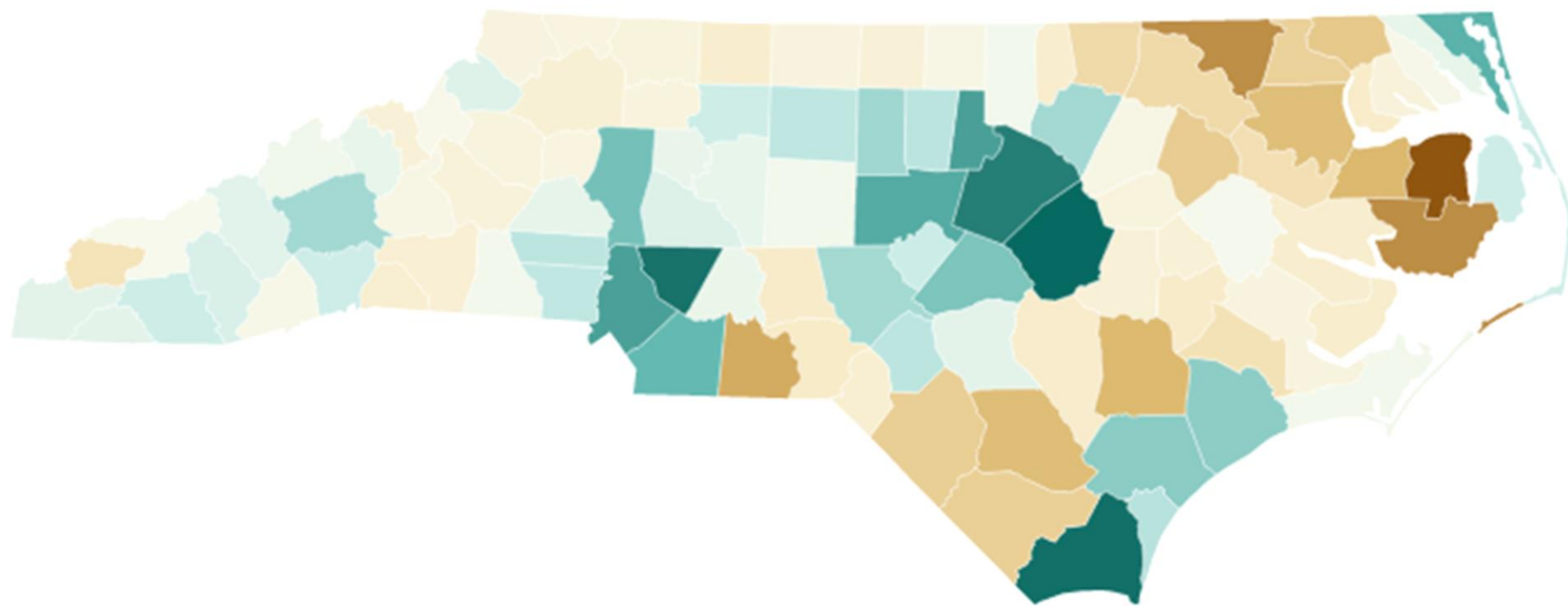
Percent Change in Resident Population for the 50 States, the District of Columbia, and Puerto Rico: 2010 to 2020



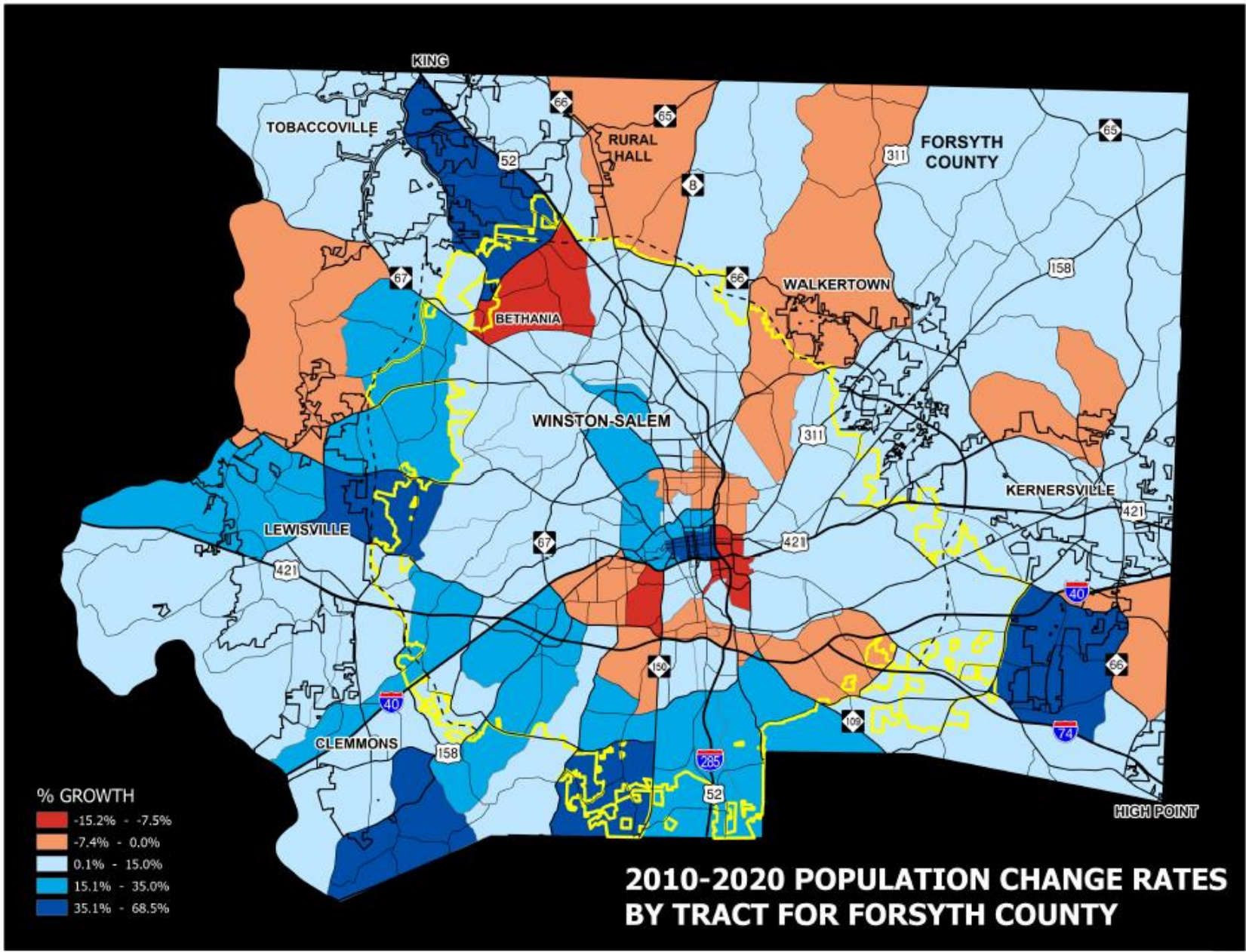
North Carolina

- North Carolina's 2010-2020 growth rate was **9.5%**.
- This is the lowest of any decade since 1910.
- North Carolina's overall population is **10,439,388**.
- North Carolina's growth rate is the 15th highest of any state.
- North Carolina is the 9th most populous state.
- North Carolina gained one congressional district as a result of the population increase.
- Highest growth rates occurred in the Triangle, Charlotte and Wilmington.

Population growth rate (%) for NC counties, 2010-2020

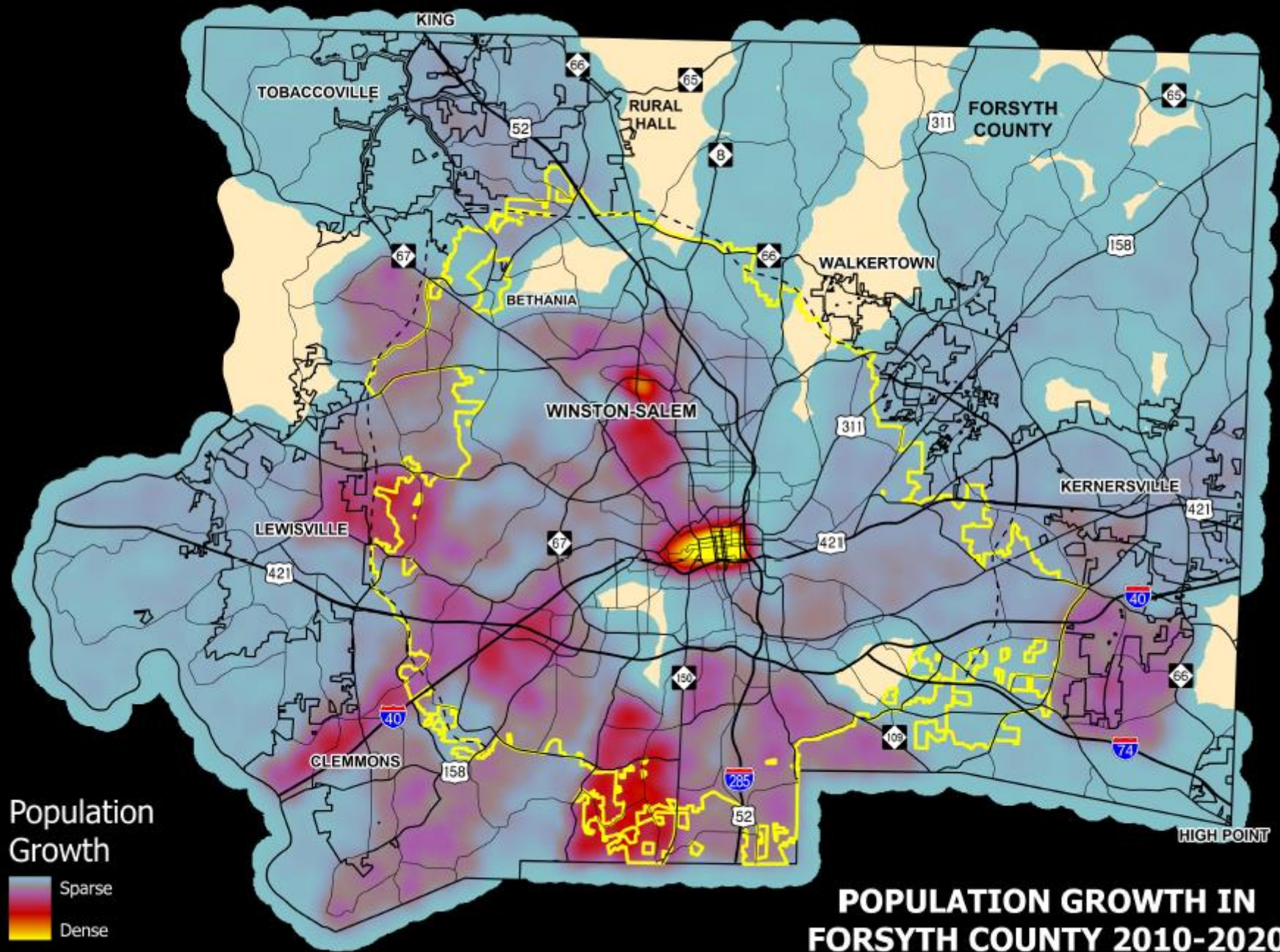


Map: Carolina Demography • Source: U.S. Census Bureau • [Get the data](#) • [Download image](#) • Created with [Datawrapper](#)



Forsyth County

- Forsyth County's 2010-2020 growth rate was **9.1%**.
- The County's overall population is **382,590**.
- It is the 4th largest county in the state behind Wake (1), Mecklenburg (2), and Guilford (3).

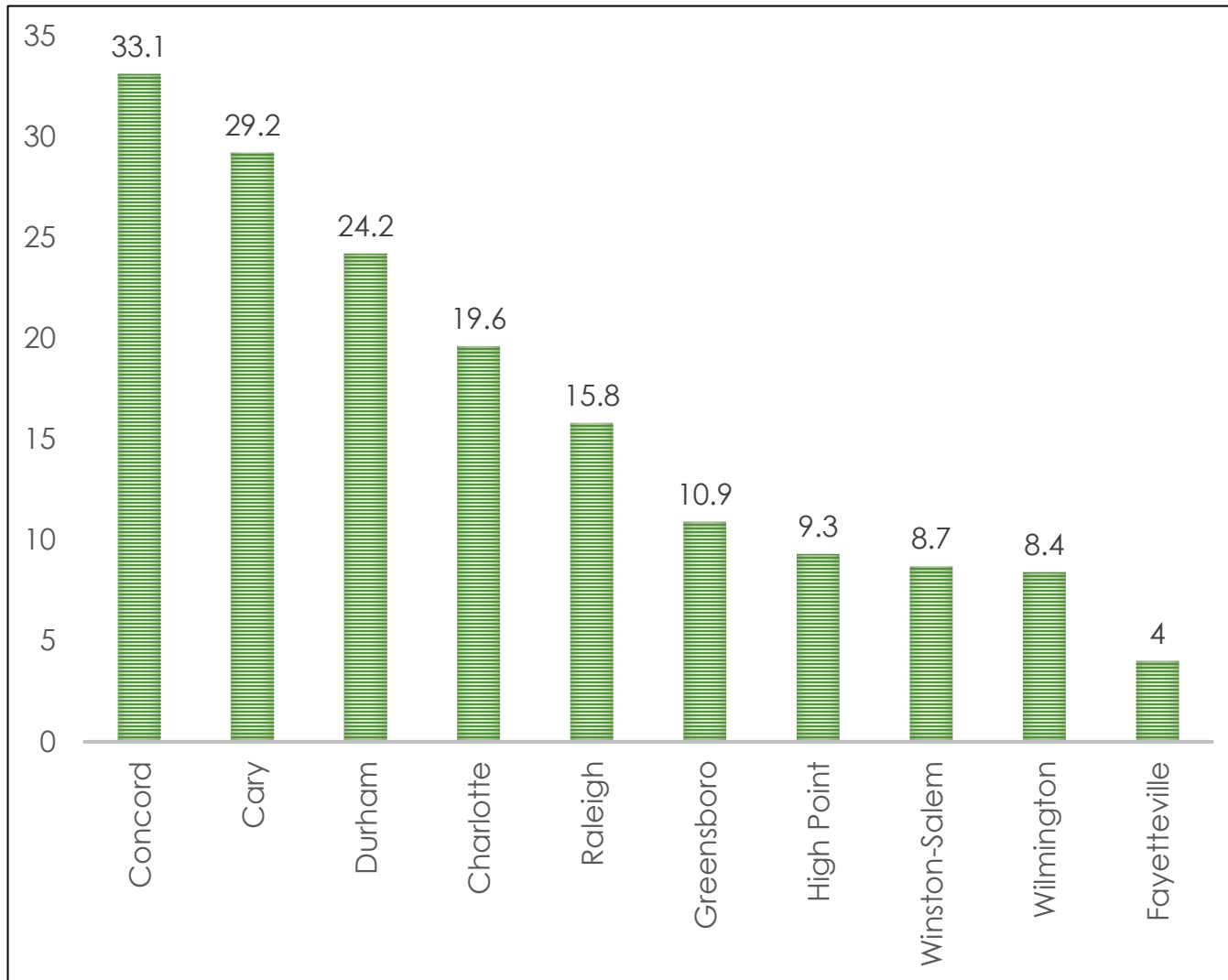


Population Growth

Sparse

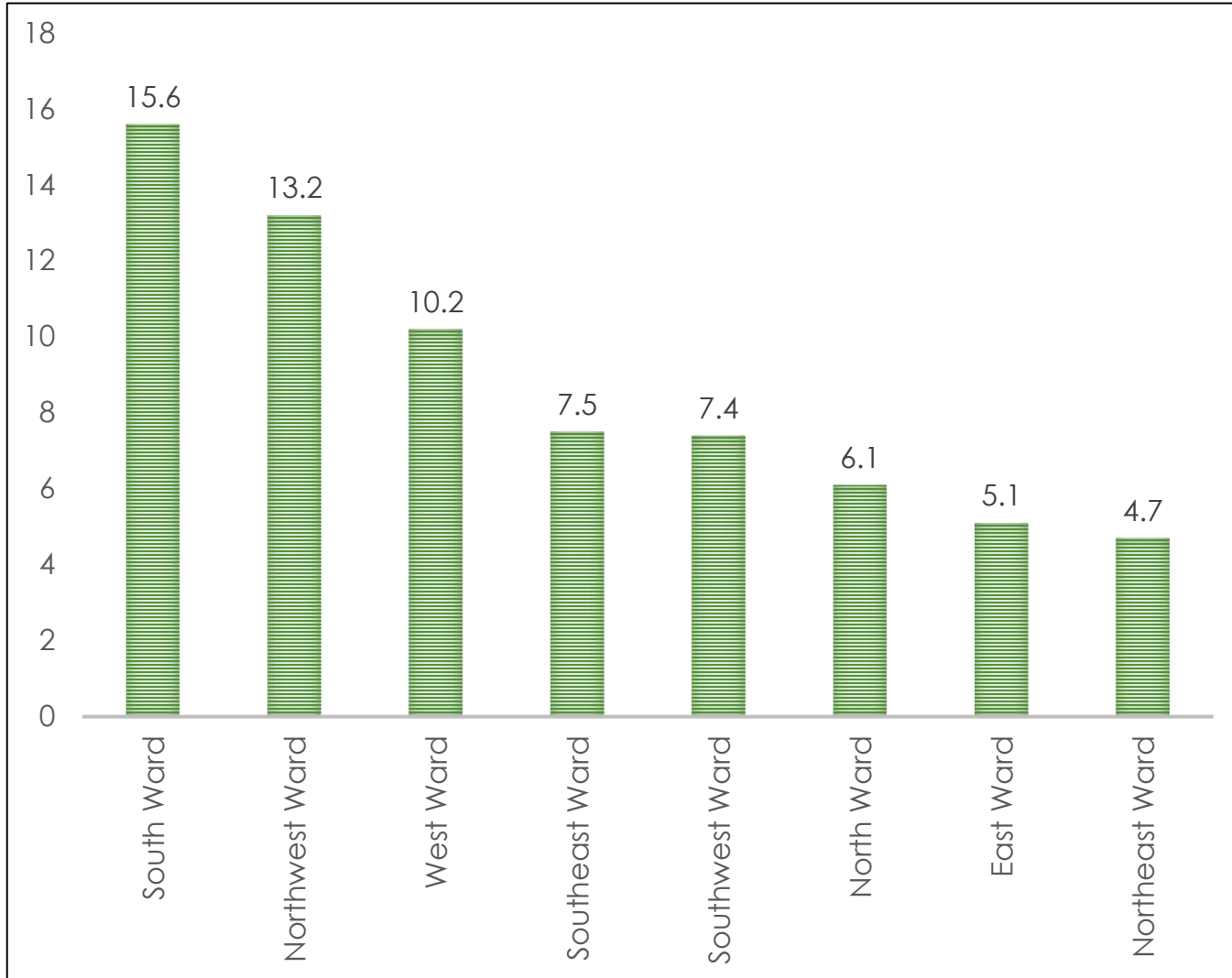
Dense

POPULATION GROWTH IN FORSYTH COUNTY 2010-2020



Winston-Salem

- Winston-Salem's 2010-2020 growth rate was **8.7%**.
- Winston-Salem's growth rate is the 3rd lowest of any city above 100,000 in North Carolina
- Winston-Salem's population of **249,545** is the **5th highest** of any place in North Carolina.
- The largest places are Charlotte (874,579), Raleigh (467,665), Greensboro (299,035), Durham (283,506) and Winston-Salem.



Population Change in Winston-Salem Wards, 2011-2020

- The South Ward (15.6%) and Northwest Ward (13.2%) were the quickest growing wards in the City.
- The East Ward (5.1%) and Northeast Ward (4.7%) were the slowest growing wards.

Ward	2010			2020		
	Population 2011	Population Deviation	Percent Deviation	Population 2020	Population Deviation	Percent Deviation
North	28,541	-161	-0.56	30,348	-845	-2.71
Northeast	28,469	-233	-0.81	29,872	-1321	-4.23
East	28,909	207	0.72	30,259	-934	-2.99
Southeast	28,628	-74	-0.26	30,637	-556	-1.78
South	28,727	25	0.09	33,220	2027	6.5
Southwest	28,763	61	0.21	30,863	-330	-1.06
West	28,724	22	0.08	31,675	482	1.55
Northwest	28,856	154	0.54	32,671	1478	4.74

Winston-Salem Ward Redistricting

- In 2010, Winston-Salem's wards were brought within less than 1% of exact equality.
- It is required that if any ward is larger or smaller than 5% of exact equality after a decennial census, that redistricting must occur.
- According to the Census' recently released population counts, redistricting will be necessary.

Ward	2010			2020		
	Population 2011	Population Deviation	Percent Deviation	Population 2020	Population Deviation	Percent Deviation
North	28,541	-161	-0.56	30,348	-845	-2.71
Northeast	28,469	-233	-0.81	29,872	-1321	-4.23
East	28,909	207	0.72	30,259	-934	-2.99
Southeast	28,628	-74	-0.26	30,637	-556	-1.78
South	28,727	25	0.09	33,220	2027	6.5
Southwest	28,763	61	0.21	30,863	-330	-1.06
West	28,724	22	0.08	31,675	482	1.55
Northwest	28,856	154	0.54	32,671	1478	4.74

Winston-Salem Ward Redistricting

- In 2010, Winston-Salem's wards were brought within less than 1% of exact equality.
- It is required that if any ward is larger or smaller than 5% of exact equality after a decennial census, that redistricting must occur.
- According to the Census' recently released population counts, redistricting will be necessary.

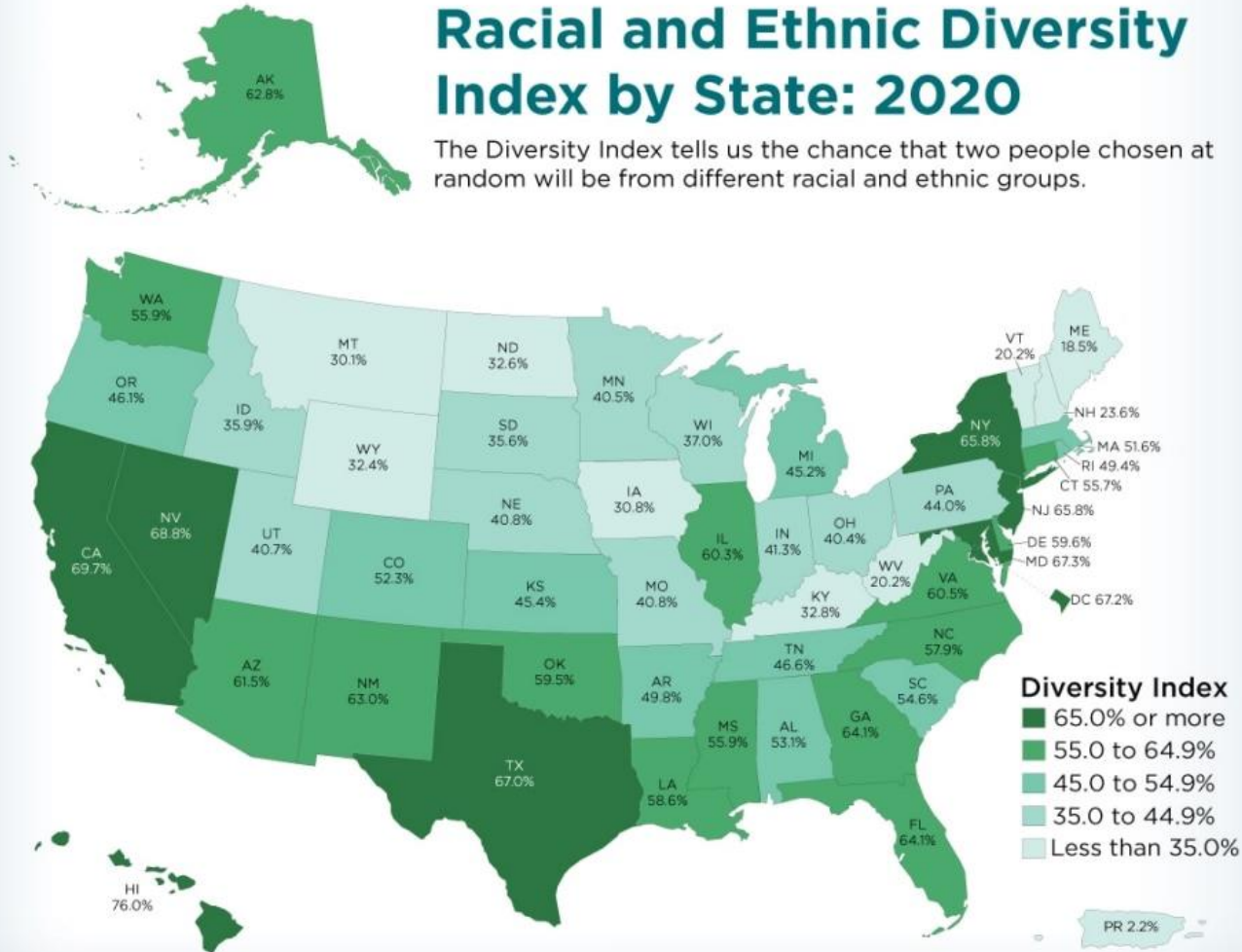
Ward	2010			2020		
	Population 2011	Population Deviation	Percent Deviation	Population 2020	Population Deviation	Percent Deviation
North	28,541	-161	-0.56	30,348	-845	-2.71
Northeast	28,469	-233	-0.81	29,872	-1321	-4.23
East	28,909	207	0.72	30,259	-934	-2.99
Southeast	28,628	-74	-0.26	30,637	-556	-1.78
South	28,727	25	0.09	33,220	2027	6.5
Southwest	28,763	61	0.21	30,863	-330	-1.06
West	28,724	22	0.08	31,675	482	1.55
Northwest	28,856	154	0.54	32,671	1478	4.74

Winston-Salem Ward Redistricting

- In 2010, Winston-Salem's wards were brought within less than 1% of exact equality.
- It is required that if any ward is larger or smaller than 5% of exact equality after a decennial census, that redistricting must occur.
- According to the Census' recently released population counts, redistricting will be necessary.

Racial and Ethnic Diversity Index by State: 2020

The Diversity Index tells us the chance that two people chosen at random will be from different racial and ethnic groups.



Racial and Ethnic Diversity

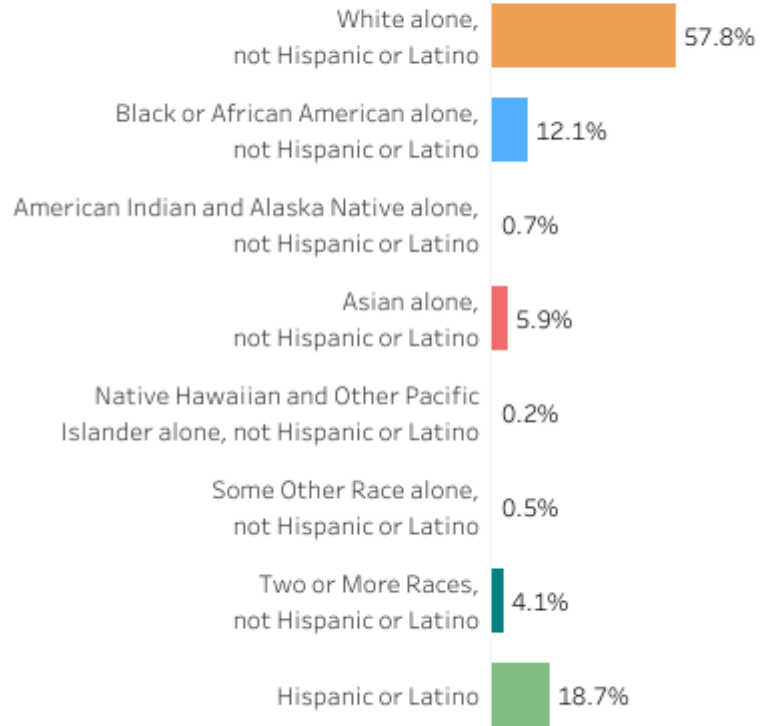
- The overall U.S. diversity index score is 61.1%
- North Carolina's diversity index score is 57.9%.
- Forsyth County's diversity index score is 62.2%.

United States

2020

Diversity Index: **61.1%**

Percentage of Total Population



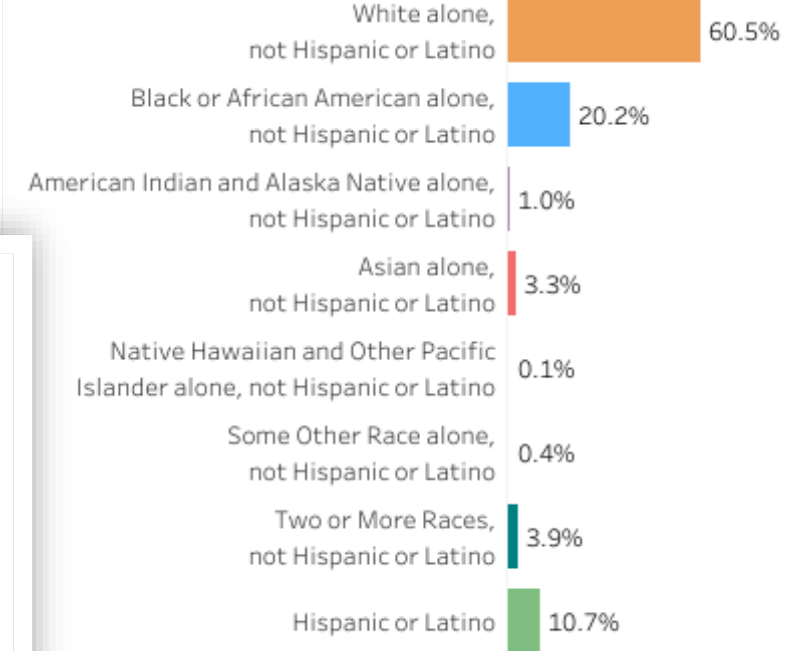
U.S. diversity index and bar chart do not include Puerto Rico.

North Carolina

2020

Diversity Index: **57.9%**

Percentage of Total Population

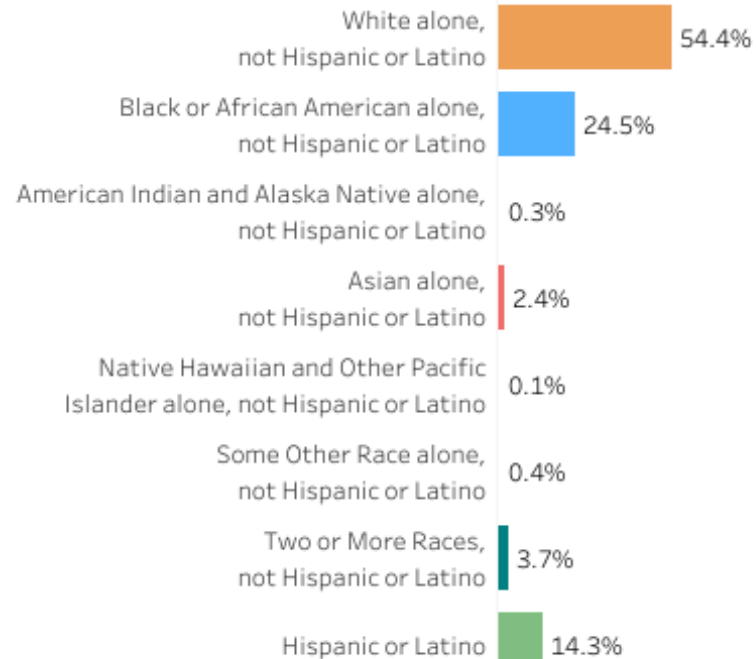


Forsyth County, North Carolina

2020

Diversity Index: **62.2%**

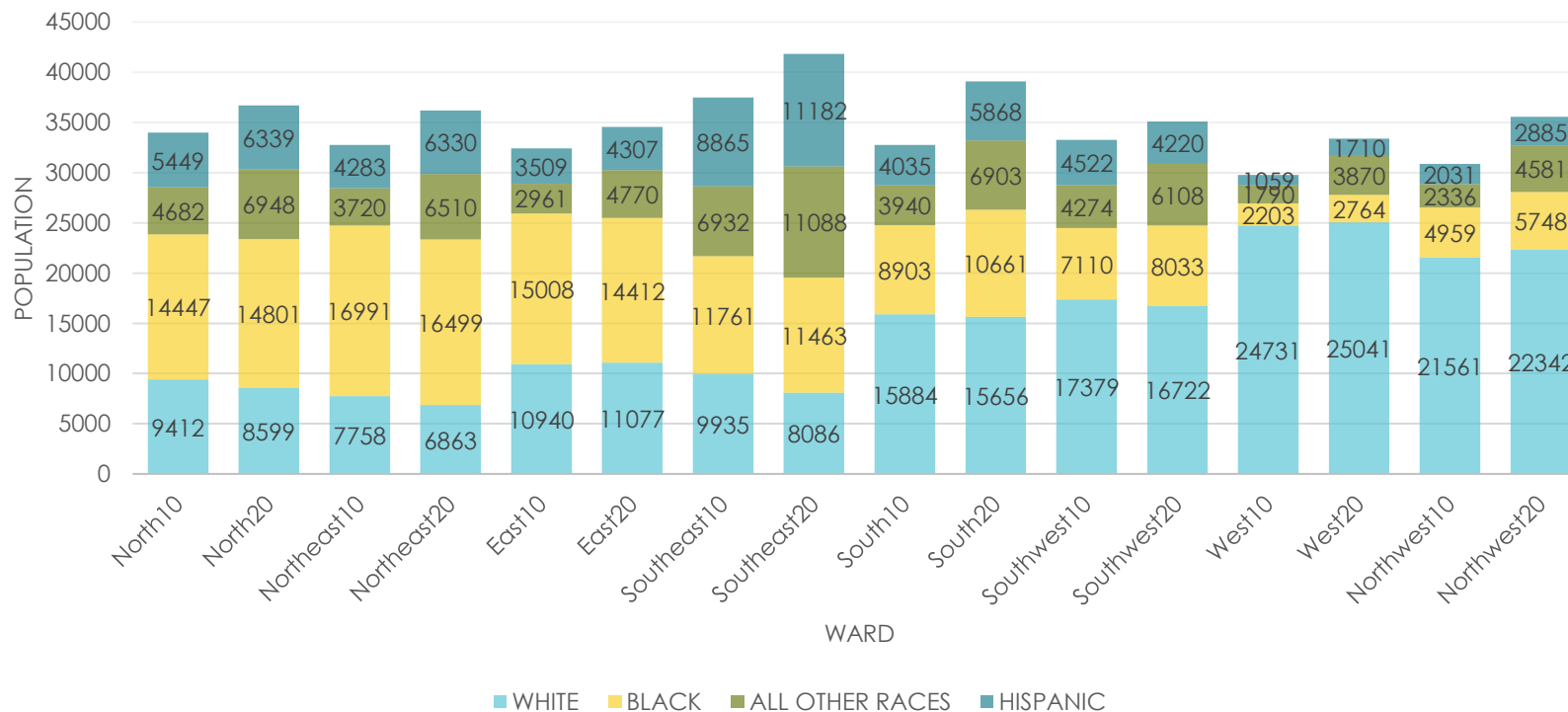
Percentage of Total Population



Race and Ethnicity	2010		2020		Change		Change in Percent of Total Population
	Population	Percent	Population	Percent	Population	Percent	
Total	229,617	100.00	249,545	100.00	19,928	8.68	0.00
White	117,600	51.22	114,386	45.84	-3,214	-5.38	-3.16
Black	79,598	34.67	84,381	33.81	4,783	6.01	-0.86
Other	32,419	14.12	50,778	20.35	18,359	56.63	6.23
Hispanic*	33,753	14.70	42,841	17.17	9,088	26.93	2.47

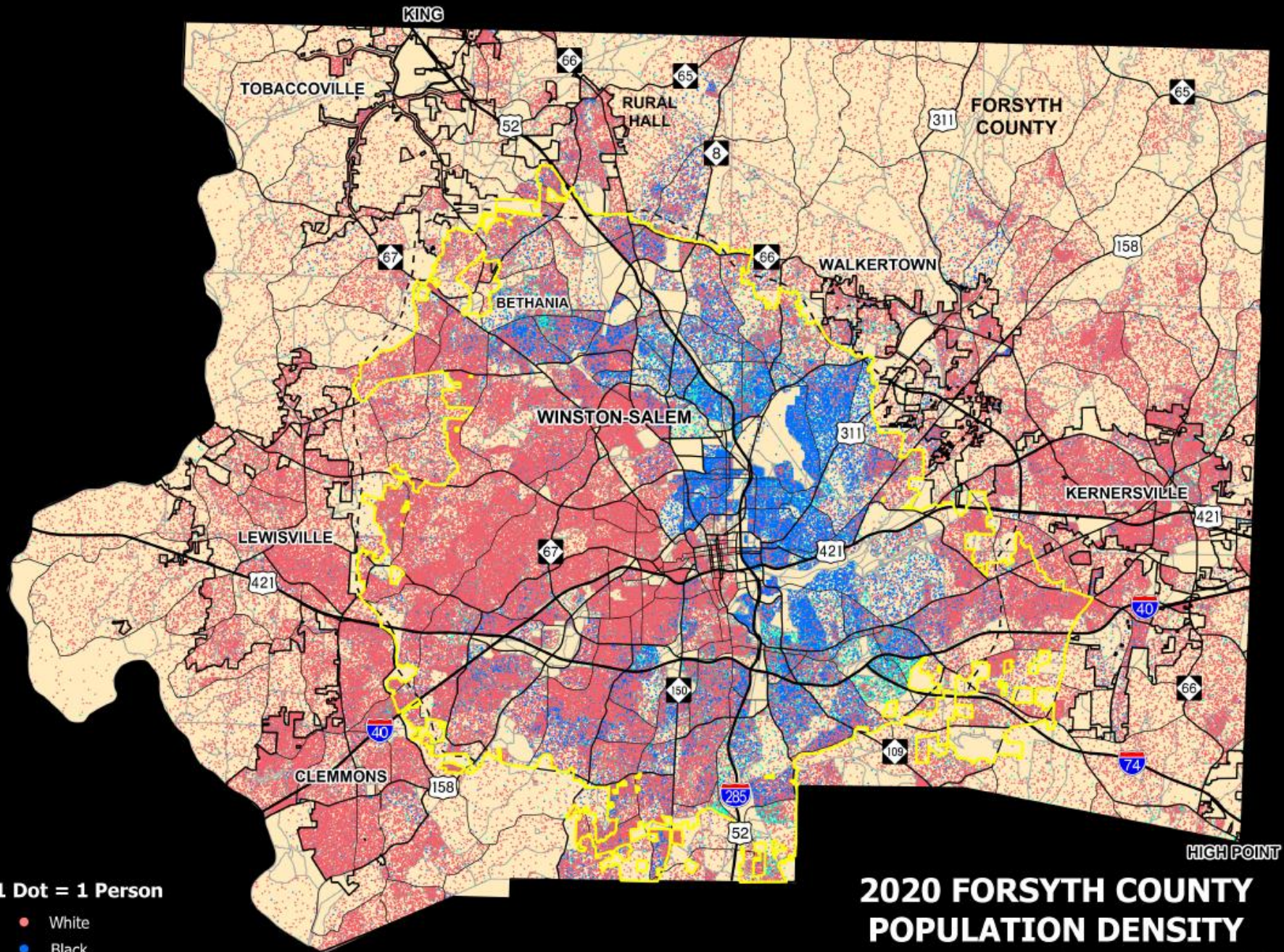
*Hispanic counts are a separate measure of ethnicity included here for informational purposes.

POPULATION BY RACE/ETHNICITY AND WARD 2010-2020

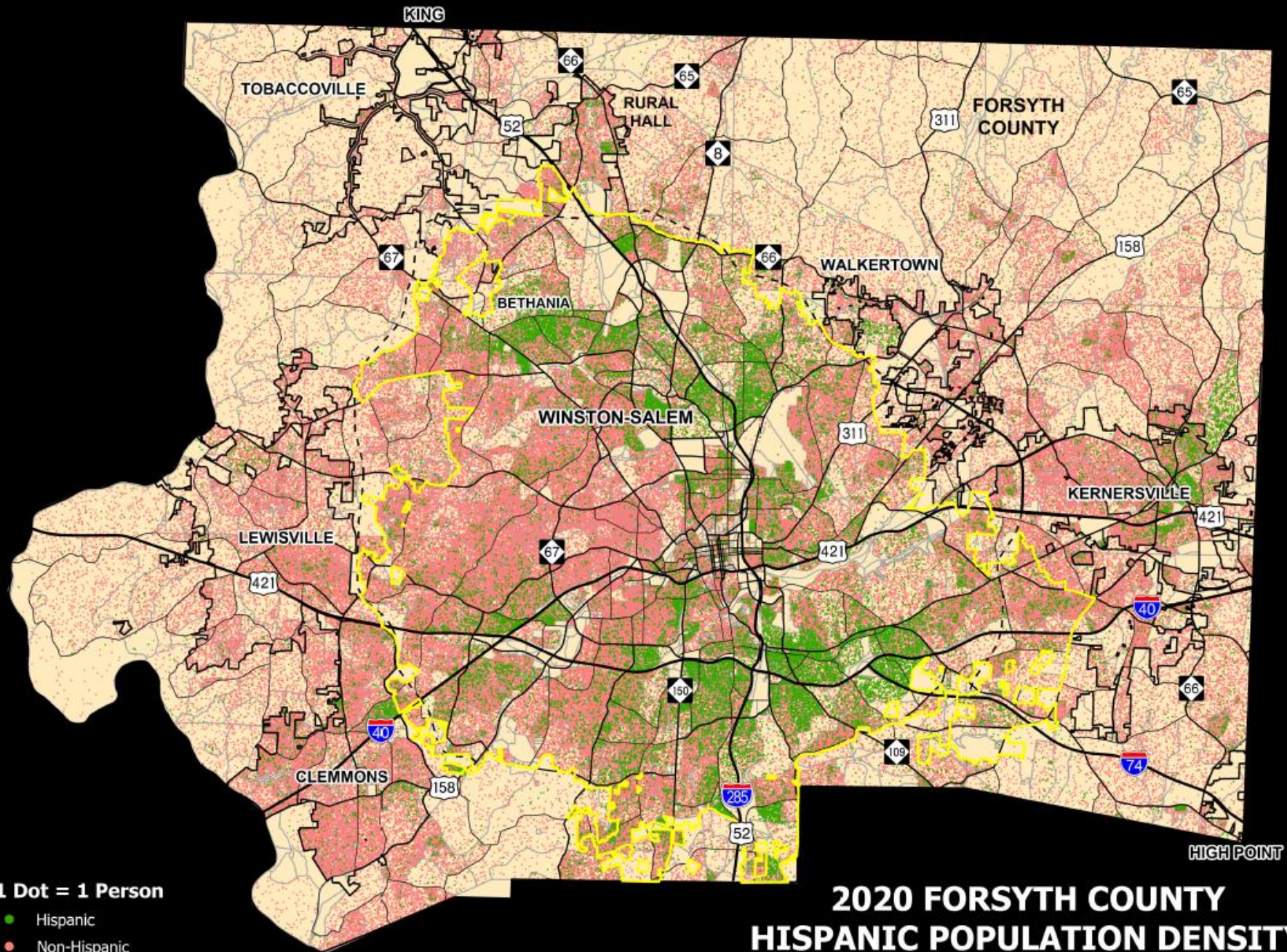


Race/Ethnicity in Winston-Salem

- Winston-Salem's White population decreased in the last decade by **3,214** but still accounts for **45.84%** of the total population.
- The black population accounts for **33.81%** of the total population.
- Other races and those identifying as being multi-racial have grown significantly in the past decade, now comprising **20.35%** of the total population.
- The Hispanic population has also grown and is now **17.17%** of the total population.



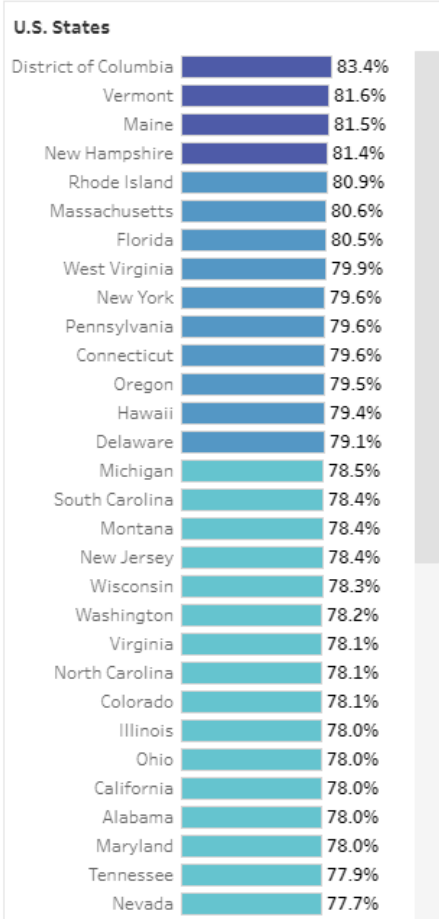
**2020 FORSYTH COUNTY
POPULATION DENSITY
BY RACE AND CENSUS BLOCK**



1 Dot = 1 Person

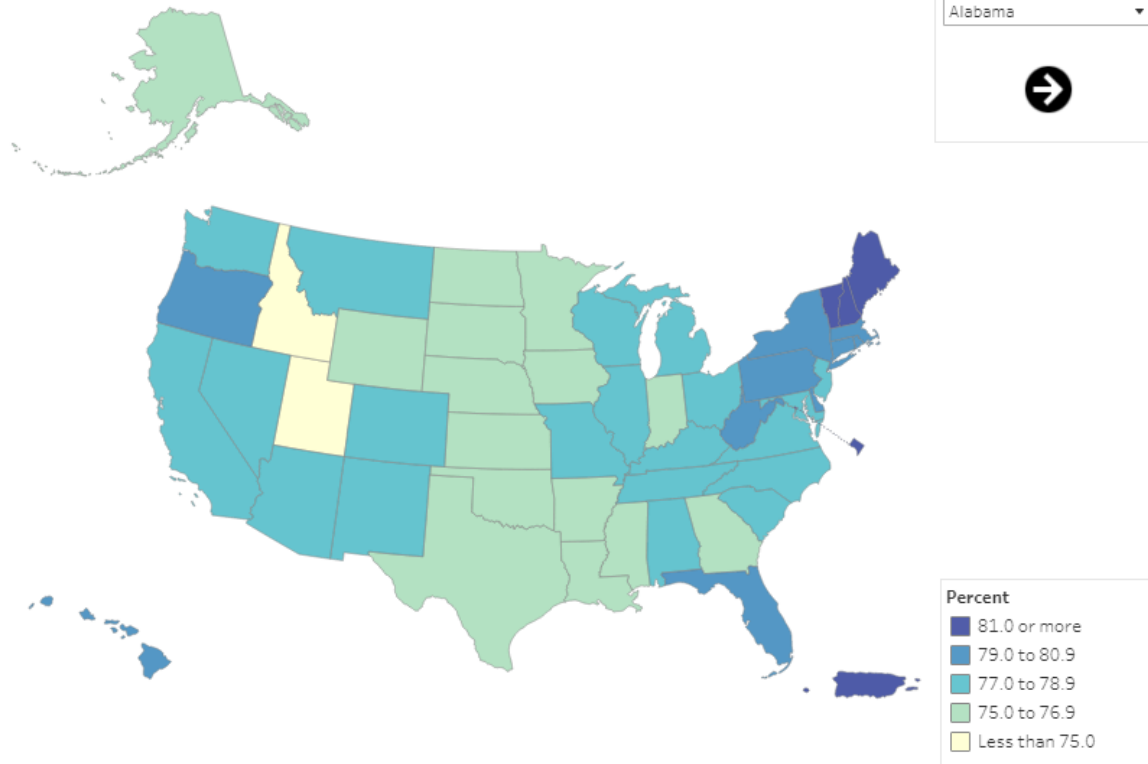
- Hispanic
- Non-Hispanic

**2020 FORSYTH COUNTY
HISPANIC POPULATION DENSITY
BY CENSUS BLOCK**



**Percentage of Population Aged 18 and Over
by State: 2020**

United States: 77.9%



Age

- 77.9% of the U.S. population is aged 18 and over.
- 78.1% of North Carolina's population is aged 18 and over.
- 77.7% of Forsyth County's population is aged 18 and over.

Next Steps

- Staff will continue compiling data in the GIS system for use in the upcoming redistricting process
- Redistricting efforts will focus on these objectives:
 1. Keep existing Council Members within their existing Wards
 2. Preserve the core of existing Wards
 3. Have 8 Wards within 2% or less population difference of each other
 4. Maintain the balance of majority-minority Wards in the City
 5. Don't split Census blocks by Ward boundaries
 6. Ward boundaries should follow logical boundaries
- Goal to have a draft map for review & comment – Winter 2021/2022
- Opportunities for public comment/input/review
- Goal to have a redistricting map ready for public hearing and adoption in Spring/Summer 2022

Questions?