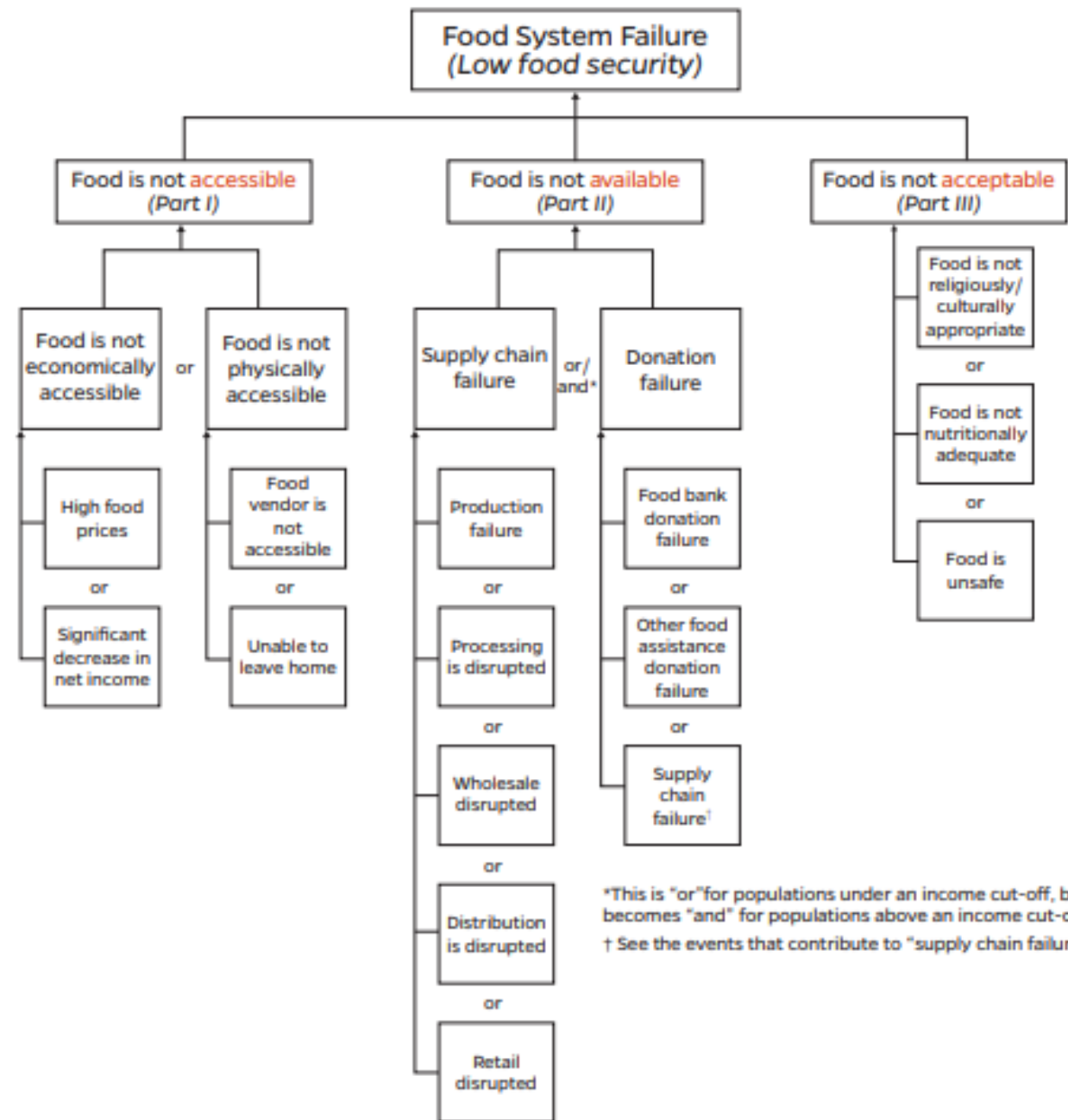




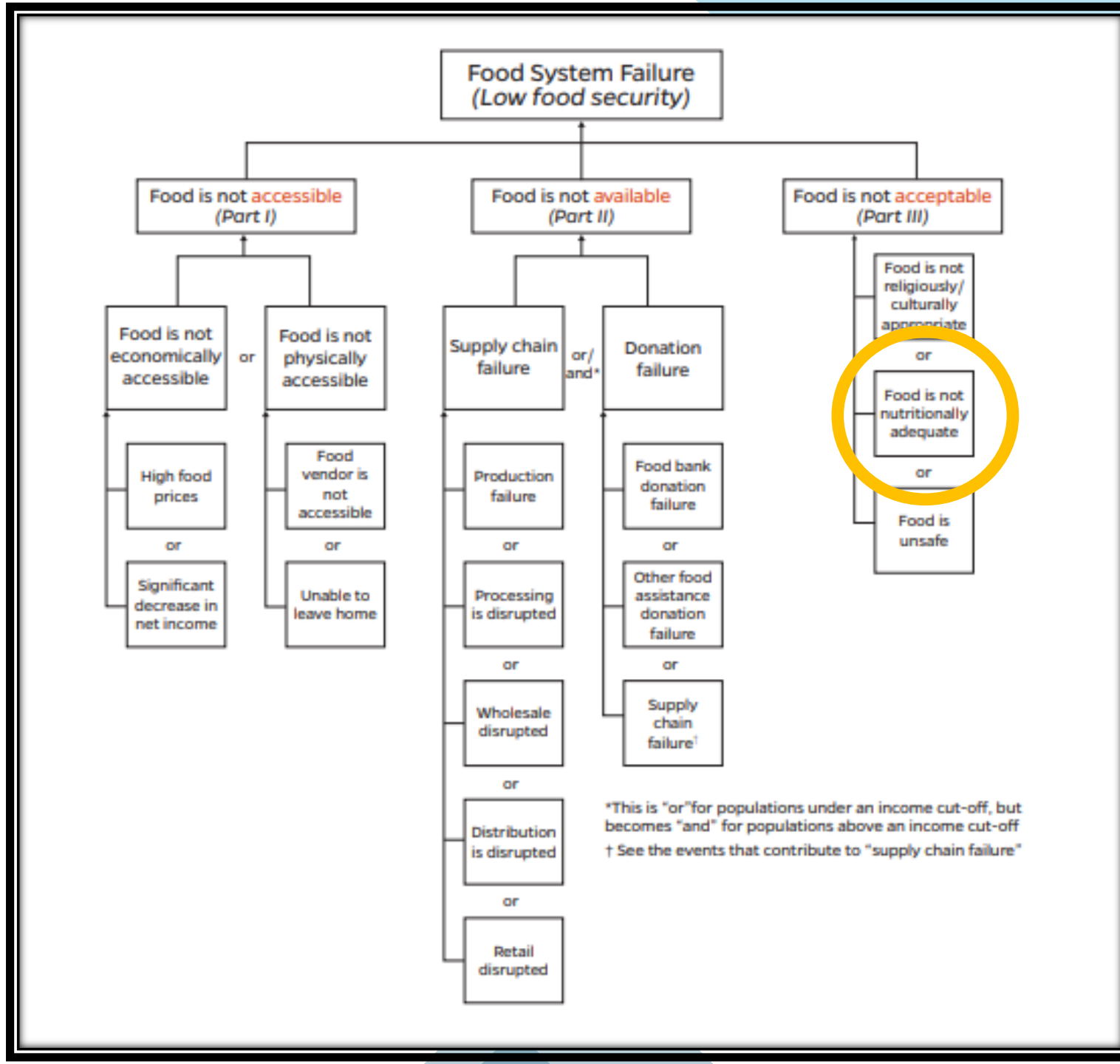
# Food Resilience Report

City of Winston-Salem  
Department of Sustainability  
2025

Food resilience is defined as the capacity over time of a food system to provide sufficient, appropriate, and accessible food in the face of various and unforeseen disturbances.



Food resilience is defined as the capacity over time of a food system to provide sufficient, appropriate, and accessible food in the face of various and unforeseen disturbances.



2022 Food  
Insecurity  
Rate for  
Forsyth County

14.5% of total  
population

22% for  
children

## Data provided by Second Harvest

11%  
white

34% Black/Afr.  
Am

43% Hispanic/Latino

37% less than 18

12% over 60

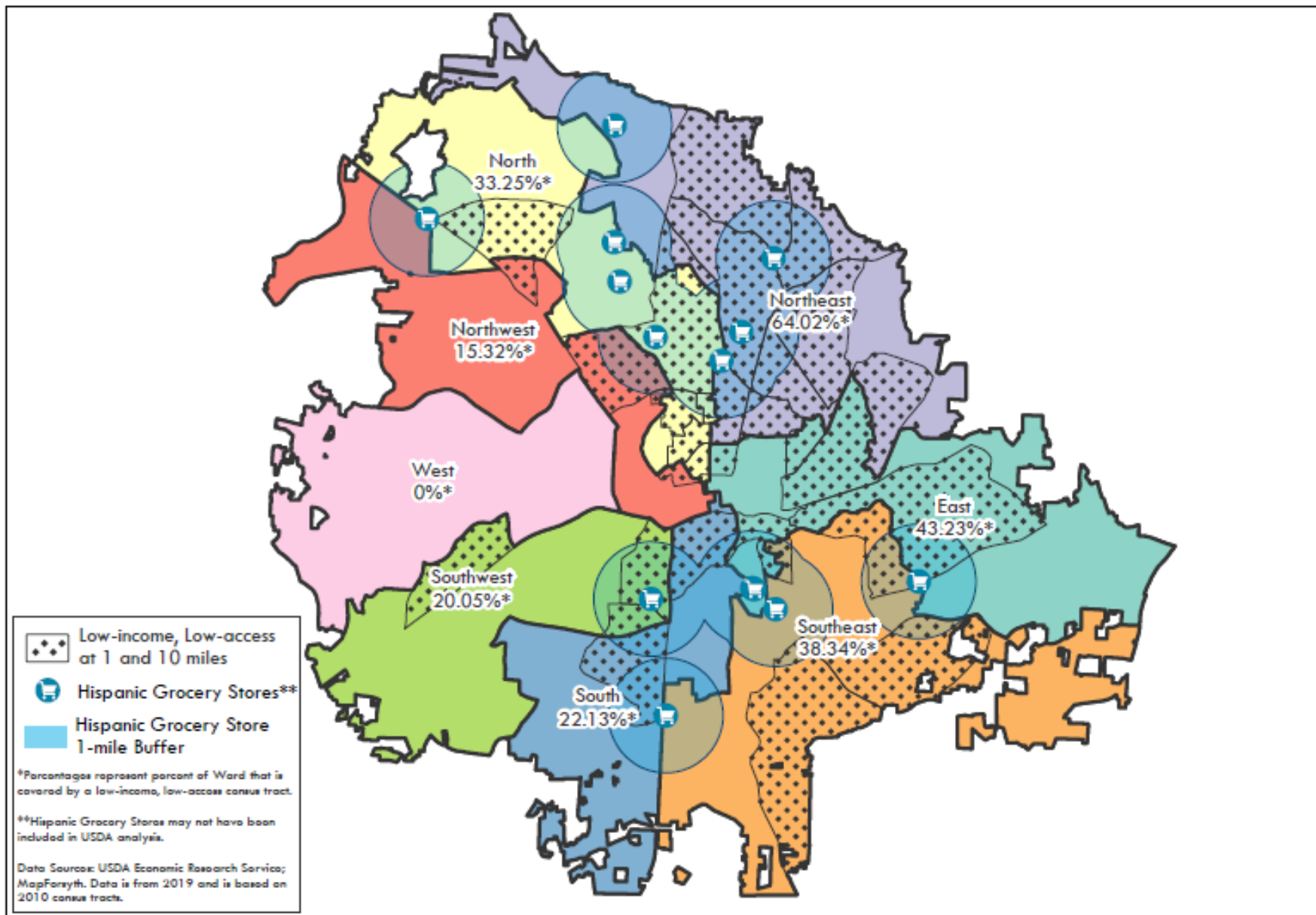
41,710 served in W-S



# RESEARCH INDICATES

THAT THERE ARE A NUMBER OF CHALLENGES BUILT INTO THE FOOD LANDSCAPE THAT MAKE IT DIFFICULT TO ADDRESS FOOD DESERTS:





# FOOD DESERTS

**Map Disclaimer**  
 This product is for informational purposes and may not have been prepared for, or be suitable for legal, engineering, or surveying purposes. All property boundaries are approximate and do not represent an on-the-ground survey. This product has been produced by the City of Winston-Salem Information Systems Department for the sole purpose of geographic reference. No warranties, expressed or implied, are made concerning the accuracy, completeness or suitability of this data.

# Winston-Salem Previous Food Efforts

Think Orange

2018-2021



Kimberly Park Hydroponics

Current Contract until June 2025, renewal due March



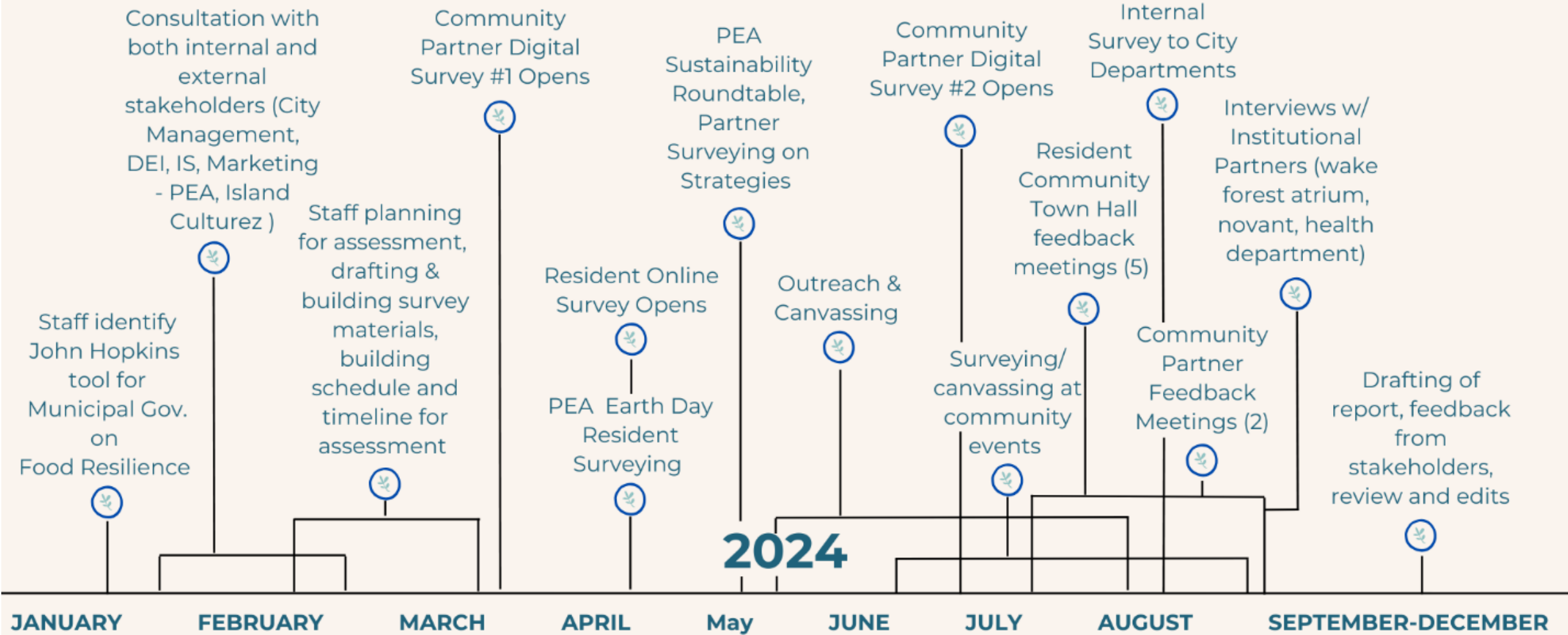
Regional Symposium with Piedmont Triad Regional Council

Sept. 2023



**CULTIVATE RESILIENCE**  
A TRIAD FOOD SYSTEM SYMPOSIUM

# Food Resilience Strategic Assessment 2024 Timeline

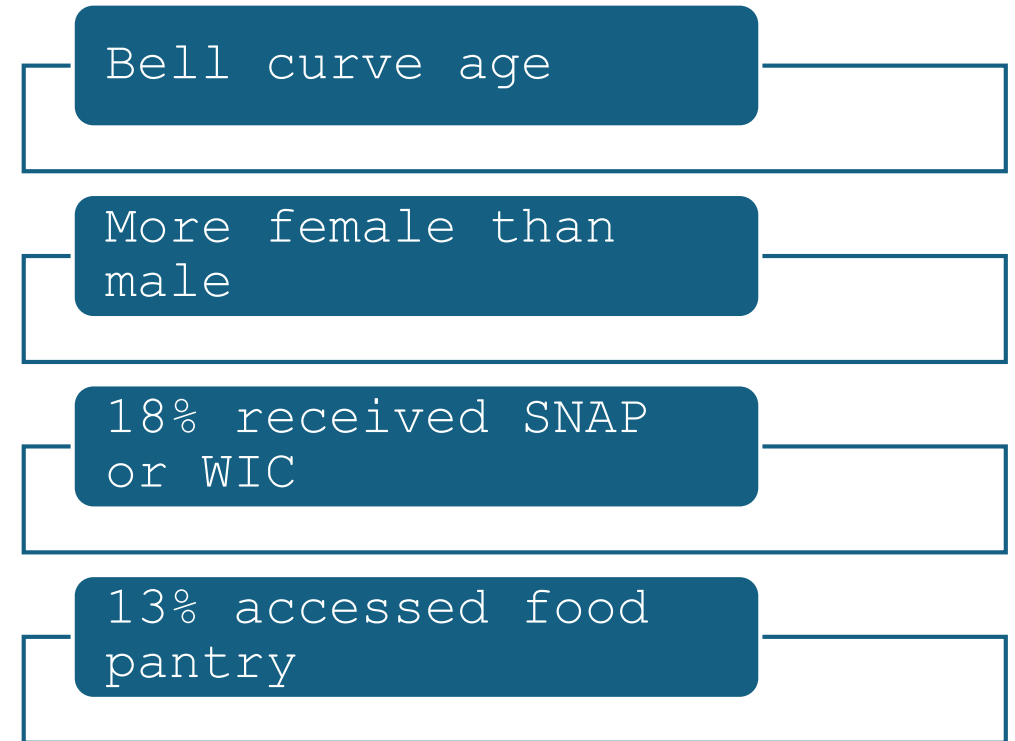




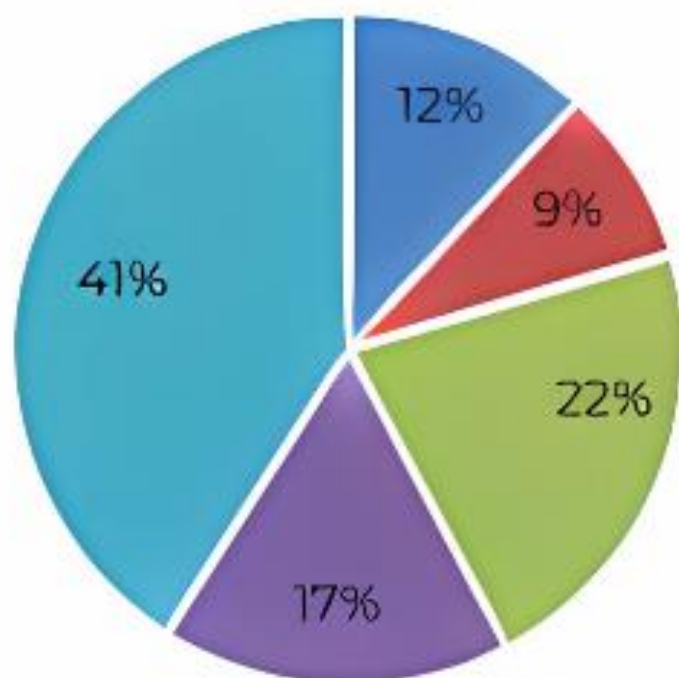
# Outreach

- 303 resident surveys
- 5 resident feedback meetings
- 2 partner surveys
- 2 partner meetings
- 4 Interviews with larger partners
- 1 city department survey

## Resident Survey Respondents

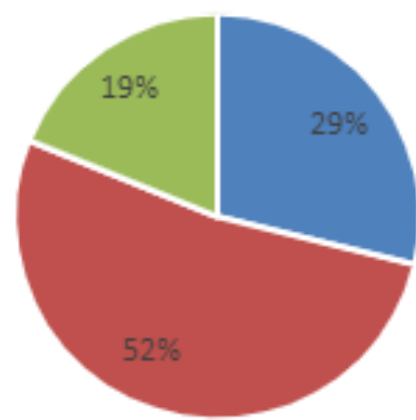


Within the past 12 months, were you worried that food would run out before you got money to buy more?



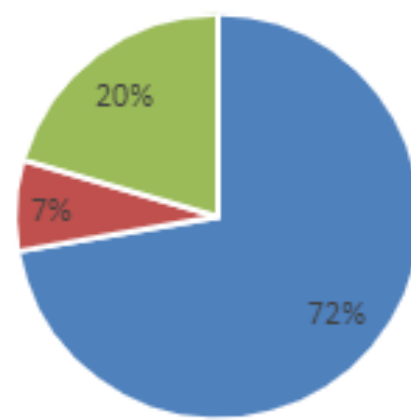
■ Always ■ Usually ■ Sometimes ■ Rarely ■ Never

All Respondents: The Distance to travel to get food is challenging



■ Agree ■ Disagree ■ Neither agree nor disagree

Respondents without Vehicle: The Distance to travel to get food is challenging



■ Agree ■ Disagree ■ Neither agree nor disagree

# Overall Feedback- Residents & Partners

## Grocery Store Access & Choice

- Disparity
- Perception of quality
- Affordability

## Public Transportation Barriers

- Route
- Cost of bus
- Bus stop amenities
- Bag rules

## Education on Healthy & Affordable Food

- Healthy eating and nutrition
- Existing resources
- How to prepare distributed foods

## Community Continuity & Funding

- Stability and funding
- Inside/outside community

## Insufficient Food Assistance

- Inconvenience of cooking
- Food sovereignty
- Hours

## Urban Agriculture

- Access to land
- Broader loss of agriculture

## Communication Gaps

- Language
- Between partners

# Community Proposed Solutions

## Support Grocery Stores & Alternative Access Points

- Encourage stores
- Supplement online grocery delivery
- Mobile grocery store

## Urban Agriculture

- Local farmers markets
- Community gardens

## Improve Transportation to Grocery

- Review bus policy
- Review bus routes & explore microtransit options

## Education & Residential Engagement

- Find pantry sources
- How to spend SNAP
- How to use pantry resources

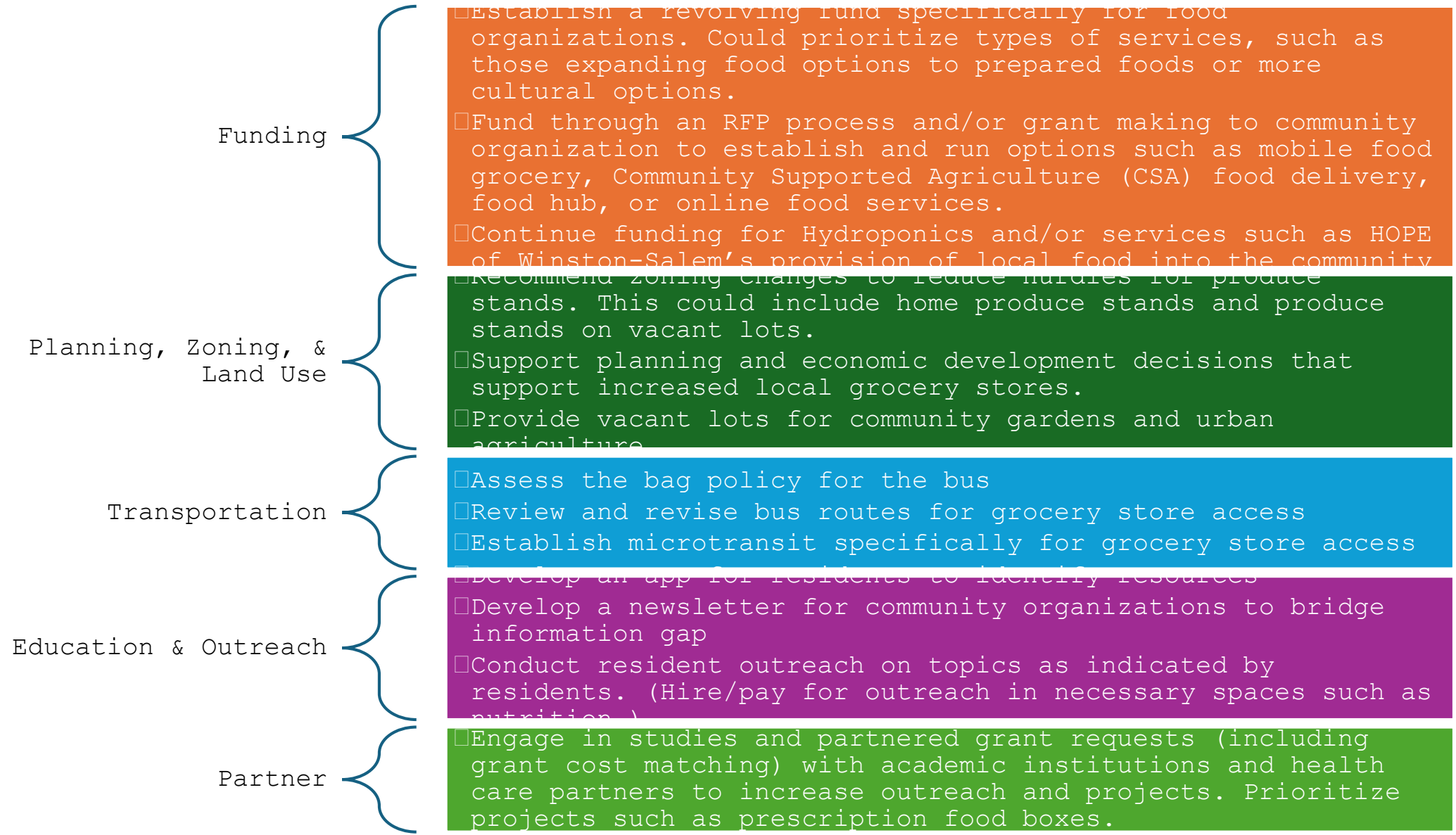
## Expand Food Options & Improve Sovereignty

- Provide more prepared, hot foods
- Ensure communities have say about options provided

## Community Partner Funding & Engagement

- Not new, stretch existing
- Regular meetings/newsletter
- More funding for small organizations

# City-Level Strategies for Strengthening Food Systems



E  
F  
F  
O  
R  
T



Low

C O S T

High