

CD-Plus Report - Code Case Images

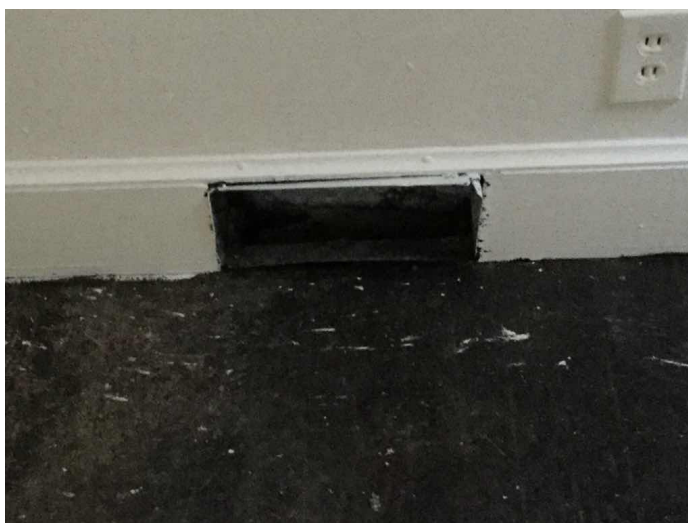
CODE CASE NBR IMAGE DATE
2017030292 3/8/2017

IMAGE DESCRIPTION
1200 Verdun Street



CODE CASE NBR IMAGE DATE
2017030292 3/8/2017

IMAGE DESCRIPTION
1200 Verdun Street



CODE CASE NBR IMAGE DATE
2017030292 3/8/2017

IMAGE DESCRIPTION
1200 Verdun Street



CODE CASE NBR IMAGE DATE
2017030292 3/8/2017

IMAGE DESCRIPTION
1200 Verdun Street



CODE CASE NBR IMAGE DATE
2017030292 3/8/2017

IMAGE DESCRIPTION
1200 Verdun Street



CODE CASE NBR IMAGE DATE
2017030292 3/8/2017

IMAGE DESCRIPTION
1200 Verdun Street



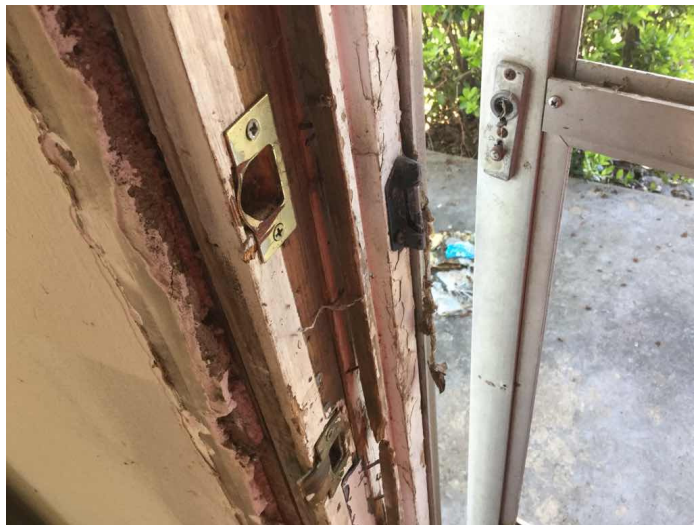
CODE CASE NBR IMAGE DATE
2017030292 3/8/2017

IMAGE DESCRIPTION
1200 Verdun Street



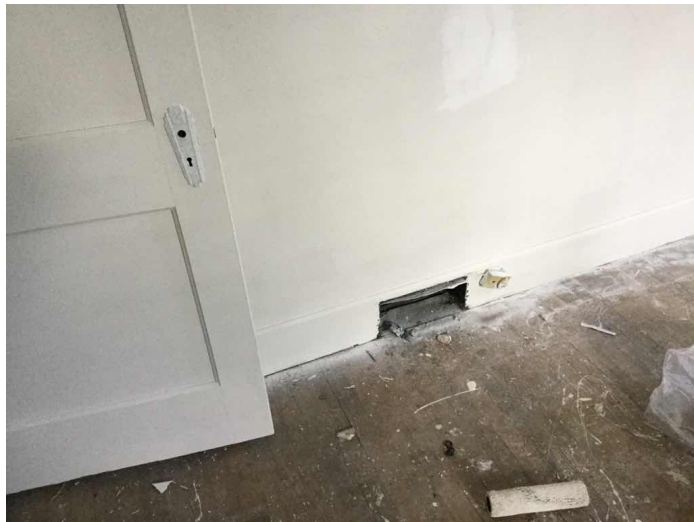
CODE CASE NBR IMAGE DATE
2017030292 3/8/2017

IMAGE DESCRIPTION
1200 Verdun Street



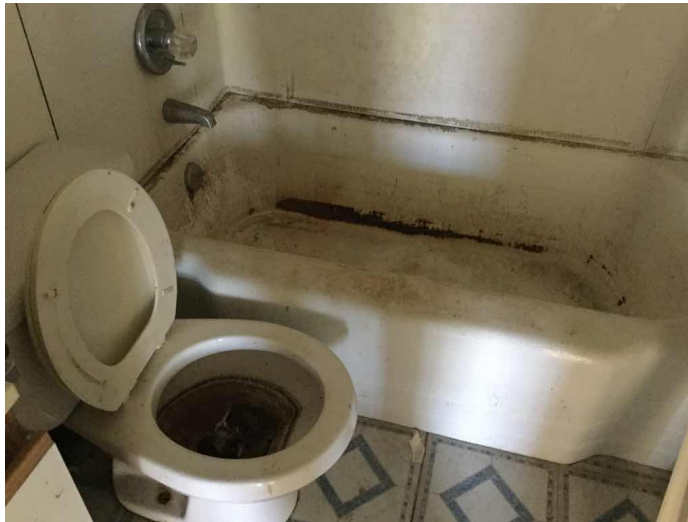
CODE CASE NBR IMAGE DATE
2017030292 3/8/2017

IMAGE DESCRIPTION
1200 Verdun Street



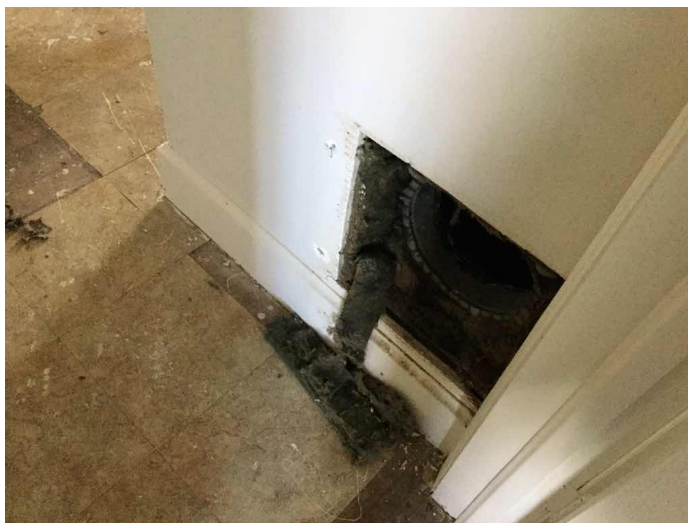
CODE CASE NBR IMAGE DATE
2017030292 3/8/2017

IMAGE DESCRIPTION
1200 Verdun Street



CODE CASE NBR IMAGE DATE
2017030292 3/8/2017

IMAGE DESCRIPTION
1200 Verdun Street



CODE CASE NBR IMAGE DATE
2017030292 3/8/2017

IMAGE DESCRIPTION
1200 Verdun Street



CODE CASE NBR IMAGE DATE
2017030292 3/8/2017

IMAGE DESCRIPTION
1200 Verdun Street



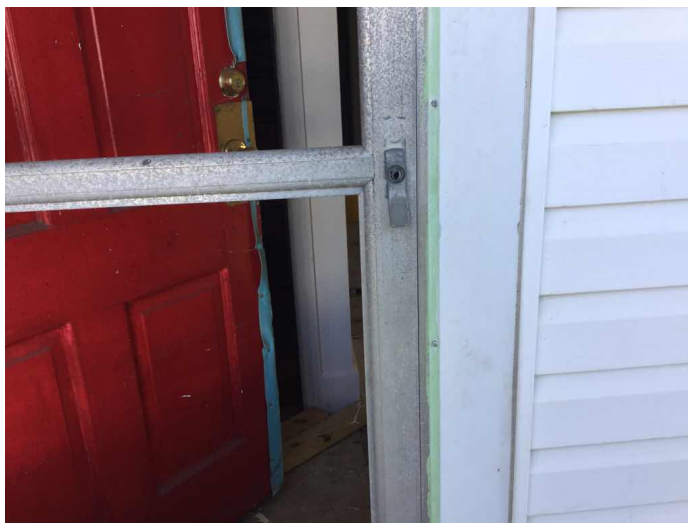
CODE CASE NBR IMAGE DATE
2017030292 3/8/2017

IMAGE DESCRIPTION
1200 Verdun Street



CODE CASE NBR IMAGE DATE
2017030292 3/8/2017

IMAGE DESCRIPTION
1200 Verdun Street



CODE CASE NBR IMAGE DATE
2017030292 3/8/2017

IMAGE DESCRIPTION
1200 Verdun Street



CODE CASE NBR IMAGE DATE
2017030292 1/30/2018

IMAGE DESCRIPTION
1200 Verdun Street



CODE CASE NBR IMAGE DATE
2017030292 1/30/2018

IMAGE DESCRIPTION
1200 Verdun Street



CODE CASE NBR IMAGE DATE
2017030292 3/7/2018

IMAGE DESCRIPTION
1200 Verdun Street



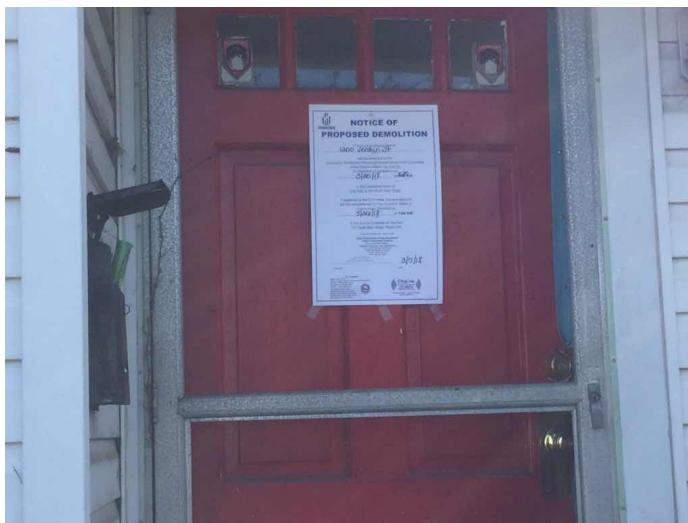
CODE CASE NBR IMAGE DATE
2017030292 3/7/2018

IMAGE DESCRIPTION
1200 Verdun Street



CODE CASE NBR IMAGE DATE
2017030292 3/7/2018

IMAGE DESCRIPTION
1200 Verdun Street



CODE CASE NBR

2017030292

IMAGE DATE

3/7/2018

IMAGE DESCRIPTION

1200 Verdun Street

