

- FIBER CEMENT VERTICAL SIDING
- 8" FIBER FRIEZE
- 8" FIBER CEMENT TRIM
- VINYL WINDOWS
- 4" FIBER CEMENT CORNER TRIM (TYP)
- 7" FLASH OVER TOP OF ALL TRIM BOARDS (TYP)
- 12" FIBER CEMENT TRIM ALIGN TOP WITH TOP OF BALCONY
- HORIZONTAL FIBER CEMENT SIDING
- DOWNSPOUT SEE ROOF PLAN
- FIBER CEMENT PANEL
- 4" FIBER CEMENT TRIM
- BRICK VENEER

1 FRONT ELEVATION - BUILDING TYPE 5
Scale: 1/8" = 1'-0"



- ELEVATION GENERAL NOTES**
- ROOFS**
★USE ICE AND WATER SHIELD AT ALL ROOF PLANES SLOPED BELOW 4:12
- ROOF VENTILATION**
SEE ROOF PLANS FOR ATTIC VENTILATION CALCULATION REQUIREMENTS.
- PENETRATIONS**
ALL EXTERIOR WALL PENETRATIONS (EXHAUST & PLUMBING VENTS) TO MATCH ADJACENT WALL MATERIAL.

- ARCHITECTURAL PLANS EXTERIOR MATERIALS**
- [Pattern] = ASPHALT SHINGLE ROOF
 - [Pattern] = STANDING SEAM METAL ROOF
 - [Pattern] = FIBER CEMENT HORIZONTAL SIDING
 - [Pattern] = FIBER CEMENT BOARD & BATTEN
 - [Pattern] = BRICK VENEER
 - [Pattern] = BRICK ROWLOCK/SOLDIER

2 TYPICAL SIDE ELEVATION (LEFT SIDE SHOWN) - BUILDING TYPE 5
Scale: 1/8" = 1'-0"



3 REAR ELEVATION - BUILDING TYPE 5
Scale: 1/8" = 1'-0"



5711 six forks road, suite 100, raleigh, nc 27609
office (919) 846-8100
website www.planworx.com



ParkStone at Indian Land Apartments

The Widewaters Group

Indian Land, SC

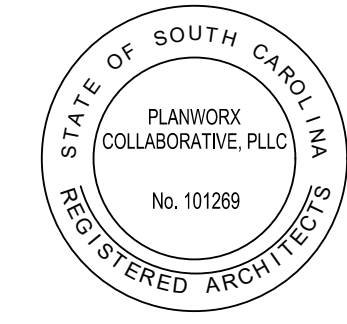


PROGRESS DATE:	11/01/19	DESCRIPTION
ISSUE DATE:		
REVISIONS NUMBER	DATE	INITIALS

PROJECT NO: 006718
DRAWN BY: TH/BB
CHECKED BY: MM/JK/RW
SHEET TITLE: Building Type 5 Exterior Elevations

SHEET NUMBER: **A1.45**

1. All drawings are to be coordinated with all site information by owner and contractor, and applicable codes. 2. Contractor is to notify architect immediately of conditions or items varying from depicted information. 3. Planworx Collaborative, PLLC is not responsible for constructed variations from the information depicted. 4. Planworx Collaborative, PLLC will not assume any liability for expenses associated with excess and omissions on these drawings unless offset by verified construction savings as a result of Planworx Collaborative, PLLC design. 5. Planworx Collaborative, PLLC retains ownership of all of designs depicted and implied herein. 6. Planworx Collaborative, PLLC is not responsible for estimating, maintaining, or regulating construction costs associated with these plans. © Copyright 2019. All rights reserved. Reproduction of this sheet, in whole or in part, is strictly prohibited. Plans may be used once by client. Unauthorized use strictly prohibited. PLANS NOT VALID FOR CONSTRUCTION W/O APPROPRIATE PROFESSIONAL SEALS.



ParkStone at Indian Land Apartments
The Widewaters Group
Indian Land, SC

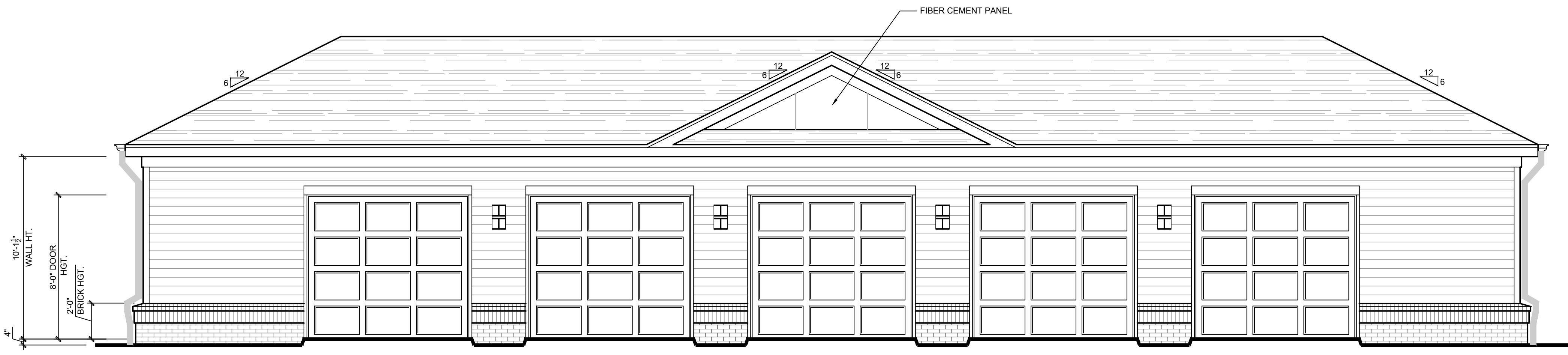
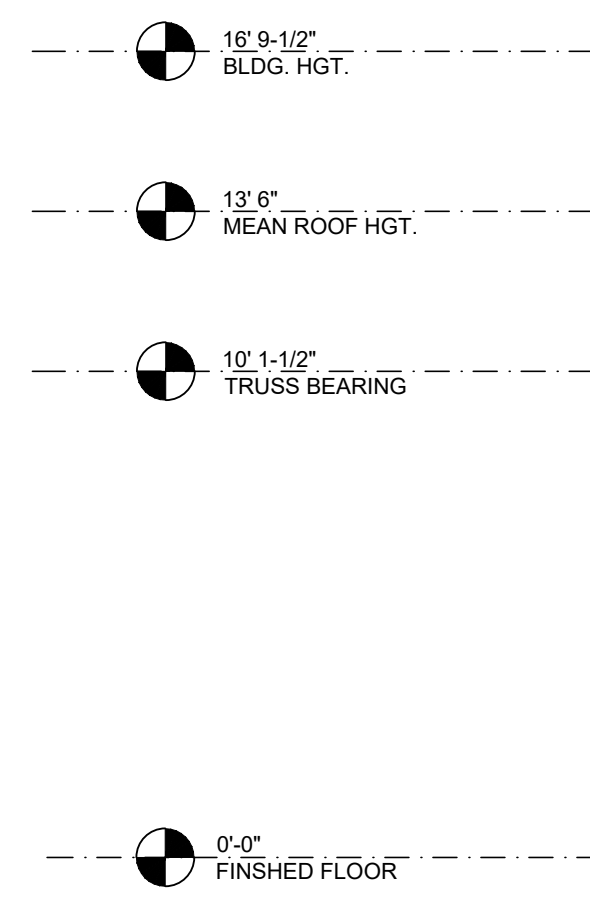


PROGRESS DATE:	11/01/19	DESCRIPTION
ISSUE DATE:		
REVISIONS NUMBER	DATE	INITIALS
1		
2		
3		
4		
5		
6		
7		
8		
9		
10		

PROJECT NO: 006718
DRAWN BY: TH/BB
CHECKED BY: MM/JK/RW

SHEET TITLE:
Garage Type 1 Elevations

SHEET NUMBER:
A3.11



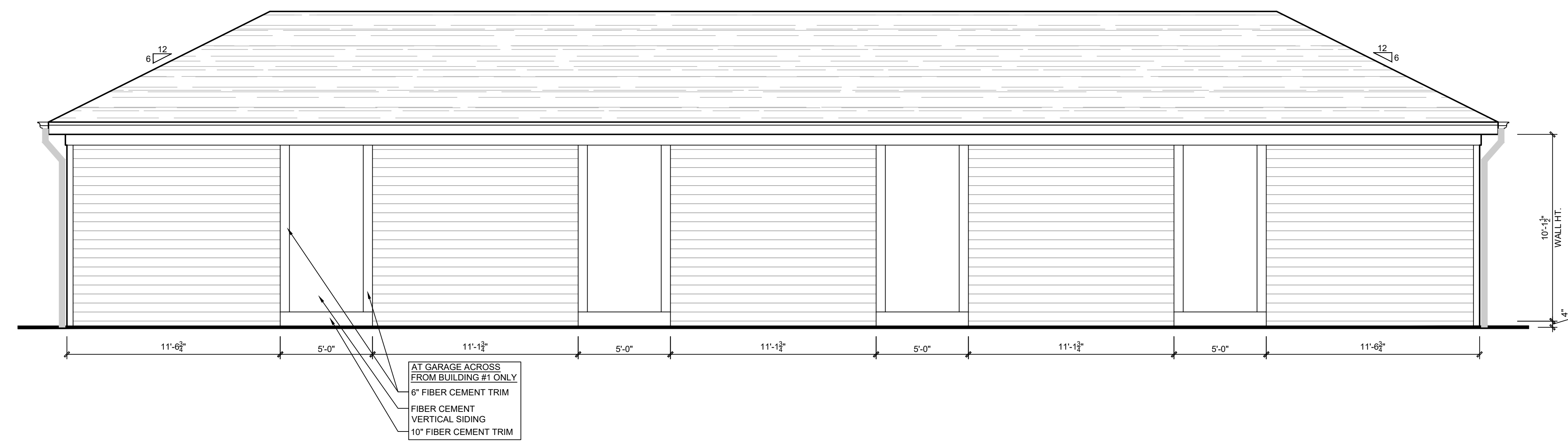
1 FRONT ELEVATION - GARAGE TYPE 1
Scale: 1/4" = 1'-0"



ARCHITECTURAL PLANS
EXTERIOR MATERIALS

- = ASPHALT SHINGLE ROOF
- = FIBER CEMENT PLANK SIDING
- = BRICK VENEER
- = ROWLOCK/SOLDIER

2 TYPICAL SIDE ELEVATION (LEFT SIDE SHOWN) - GARAGE TYPE 1
Scale: 1/4" = 1'-0"



3 REAR ELEVATION - GARAGE TYPE 1
Scale: 1/4" = 1'-0"

1. All drawings are to be coordinated with all site information by owner and contractor, and applicable codes. 2. Contractor is to notify architect immediately of conditions or items varying from depicted information. 3. Planworx Collaborative, PLLC is not responsible for constructed variations from the information depicted. 4. Planworx Collaborative, PLLC will not assume any liability for expenses associated with errors and omissions on these drawings unless offset by verified construction savings as a result of Planworx Collaborative, PLLC design. 5. Planworx Collaborative, PLLC retains ownership of all of designs depicted and implied herein. 6. Planworx Collaborative, PLLC is not responsible for estimating, maintaining, or regulating construction costs associated with these plans. © Copyright 2019. All rights reserved. Reproduction of this sheet, in whole or in part, is strictly prohibited. Plans may be used once by client. Unauthorized use strictly prohibited. PLANS NOT VALID FOR CONSTRUCTION W/O APPROPRIATE PROFESSIONAL SEALS.