

Winston-Salem

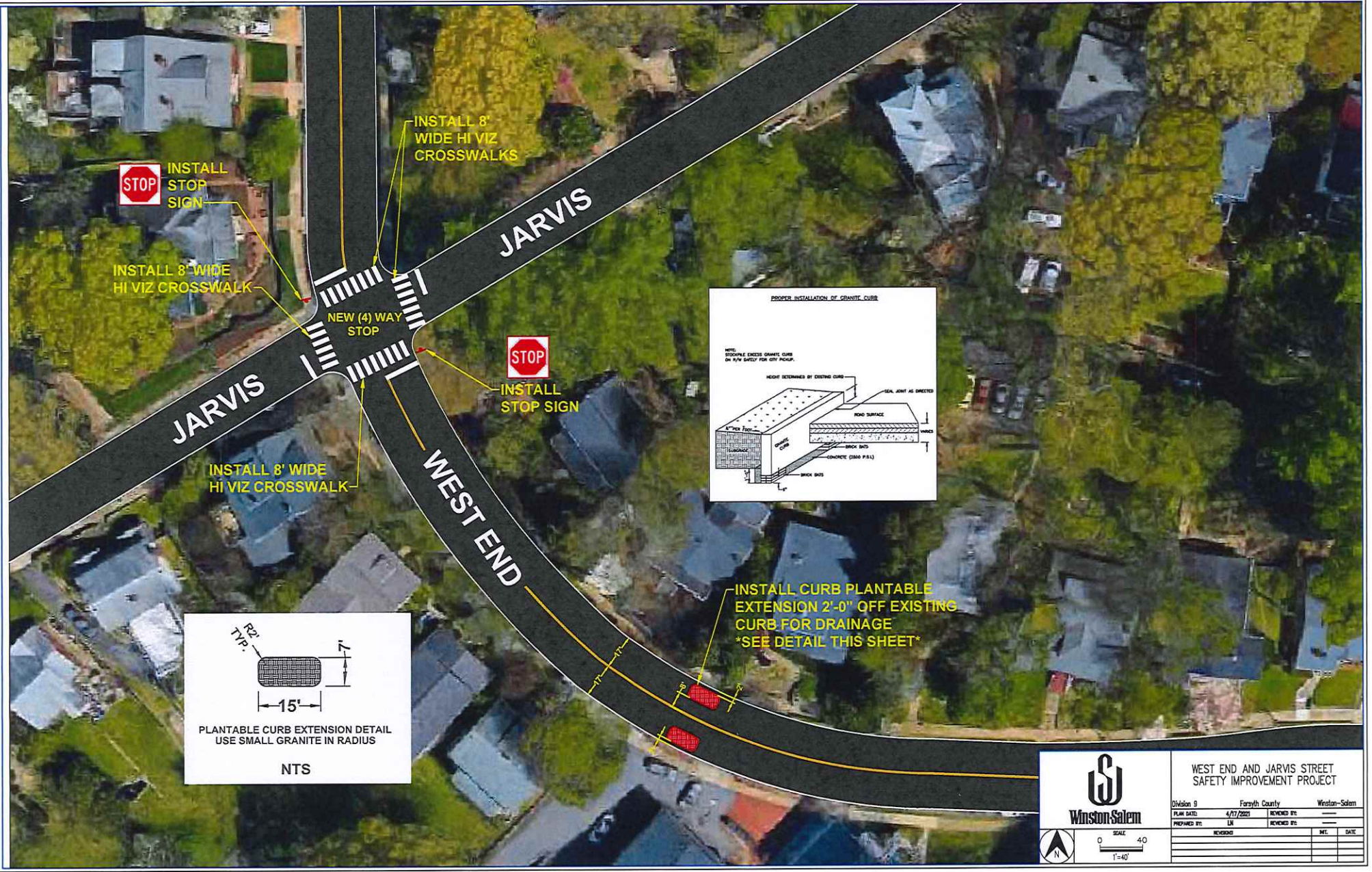
**WEST END, FIRST STREET & PIEDMONT AVE.
SAFETY IMPROVEMENT PROJECT**

Division 9	Forsyth County	Winston-Salem
PLAN DATE: 9/23/2023	REVISION BY: _____	DATE: _____
PREPARED BY: LN	REVISION BY: _____	DATE: _____
REVISION: _____	DATE: _____	DATE: _____

SCALE

0 30

1"=30'



 **INSTALL STOP SIGN**

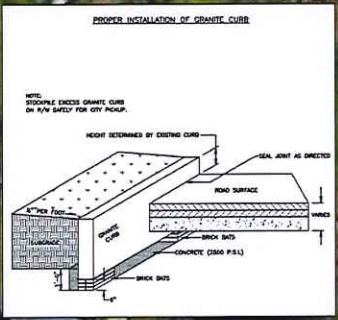
INSTALL 8' WIDE HI VIZ CROSSWALK

INSTALL 8' WIDE HI VIZ CROSSWALKS

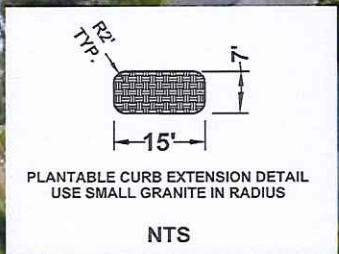
NEW (4) WAY STOP


 **INSTALL STOP SIGN**

INSTALL 8' WIDE HI VIZ CROSSWALK



INSTALL CURB PLANTABLE EXTENSION 2'-0" OFF EXISTING CURB FOR DRAINAGE *SEE DETAIL THIS SHEET*




Winston-Salem


**WEST END AND JARVIS STREET
SAFETY IMPROVEMENT PROJECT**

Division 9 Forsyth County Winston-Salem

PLAN DATE: 4/17/2020 REVISION BY: _____

PREPARED BY: LR REVIEWED BY: _____

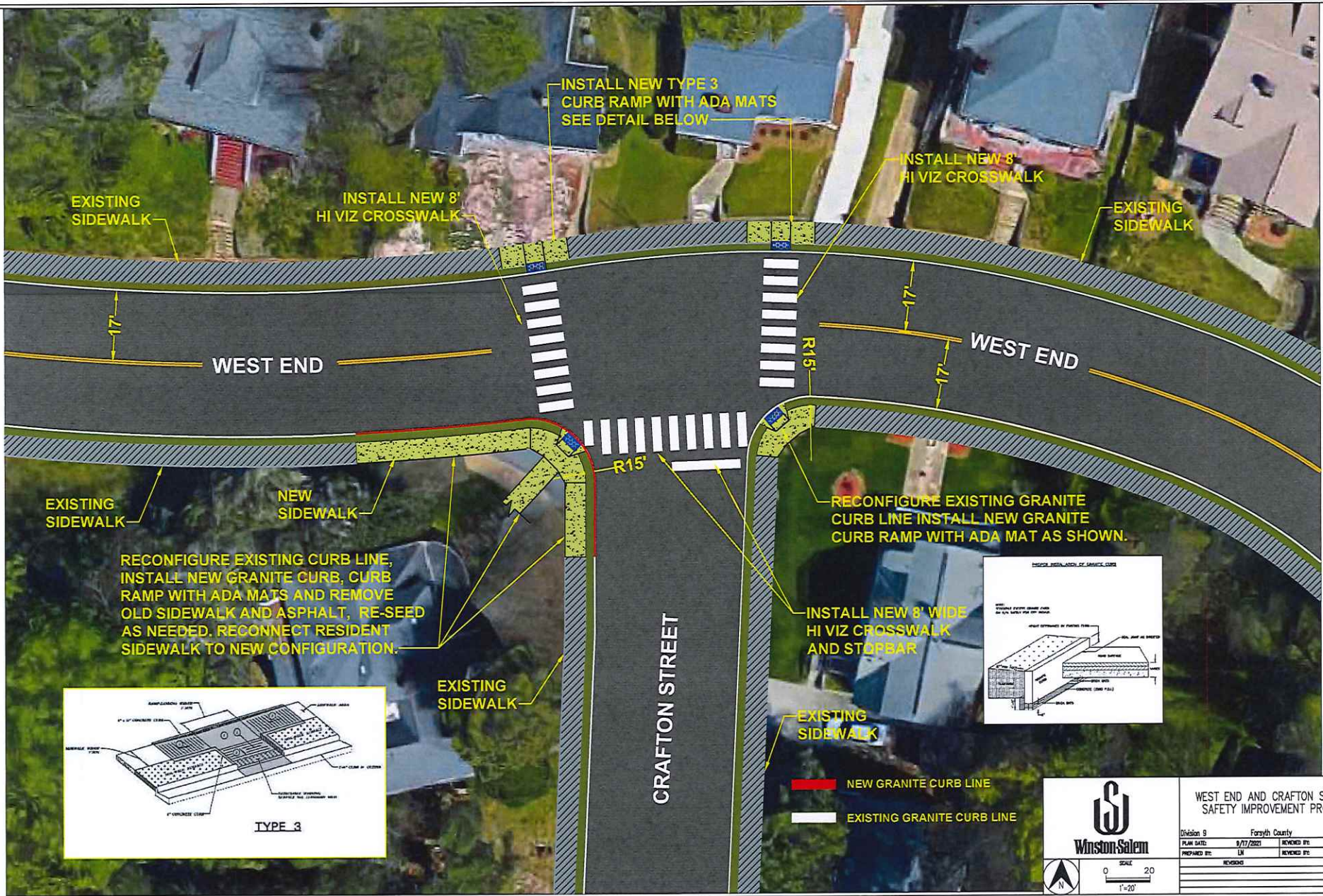
REVISION	DATE	DATE



SCALE

0 40

1"=40'



INSTALL NEW TYPE 3 CURB RAMP WITH ADA MATS SEE DETAIL BELOW

INSTALL NEW 8' HI VIZ CROSSWALK

EXISTING SIDEWALK

INSTALL NEW 8' HI VIZ CROSSWALK

EXISTING SIDEWALK

WEST END

WEST END

EXISTING SIDEWALK

NEW SIDEWALK

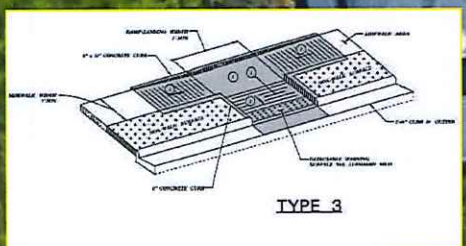
RECONFIGURE EXISTING CURB LINE, INSTALL NEW GRANITE CURB, CURB RAMP WITH ADA MATS AND REMOVE OLD SIDEWALK AND ASPHALT, RE-SEED AS NEEDED. RECONNECT RESIDENT SIDEWALK TO NEW CONFIGURATION.

RECONFIGURE EXISTING GRANITE CURB LINE INSTALL NEW GRANITE CURB RAMP WITH ADA MAT AS SHOWN.

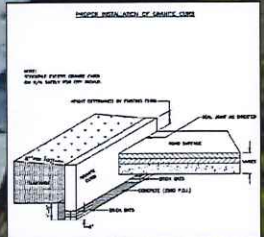
INSTALL NEW 8' WIDE HI VIZ CROSSWALK AND STOPBAR

CRAFTON STREET

EXISTING SIDEWALK



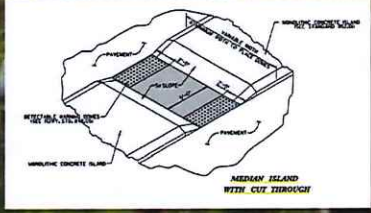
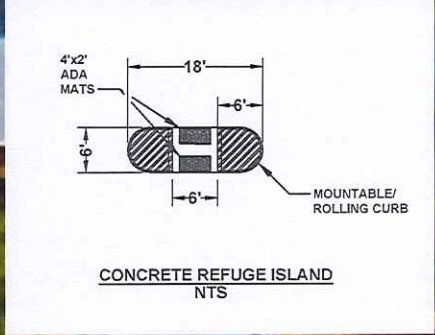
TYPE 3



- NEW GRANITE CURB LINE
- EXISTING GRANITE CURB LINE

WEST END AND CRAFTON STREET SAFETY IMPROVEMENT PROJECT

Division 9	Forsyth County	Winston-Salem
PLAN DATE: 9/17/2021	REVISIONS BY: —	DATE: —
PREPARED BY: LA	REVISIONS BY: —	DATE: —
REVISIONS	DATE	DATE



- █ NEW GRANITE CURB LINE
- █ EXISTING GRANITE CURB LINE



**WEST END, TAYLOR & FOURTH STREET
SAFETY IMPROVEMENT PROJECT**

Division 9	Forsyth County	Winston-Salem
PLAN DATE: 8/17/2021	REVISION 01:	
PREPARED BY: LA	REVISION 02:	
	INT.	DATE

